

GRANT COUNTY CERTIFIED LAND CORNER

CERTIFICATE:

I, Larry L. Austin, do hereby certify that on the 22nd day of December, 1999, I found no evidence of the East 1/4 corner of Section 01, Town 5 North, Range 2 West, of the Fourth Principal Meridian, and I re-established said corner according to the Wisconsin Statutes as shown and described heron.

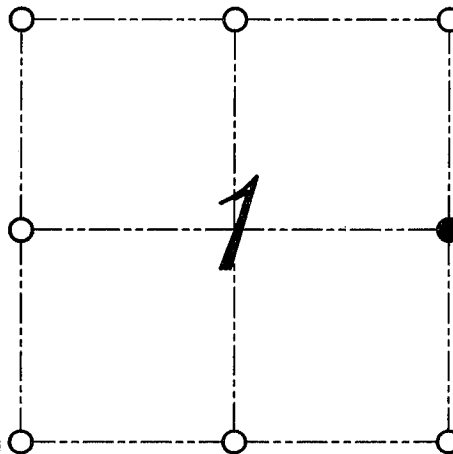
DATED THIS 17th DAY OF JANUARY, 2000

Larry L. Austin
Larry L. Austin S-1903



SEAL

CORNER NUMBER 20



● = CORNER LOCATION
EAST 1/4 CORNER OF
SECTION 01, T 5 N R 2 W
TOWN OF LIBERTY

HISTORY OF ORIGINAL CORNER ESTABLISHMENT:

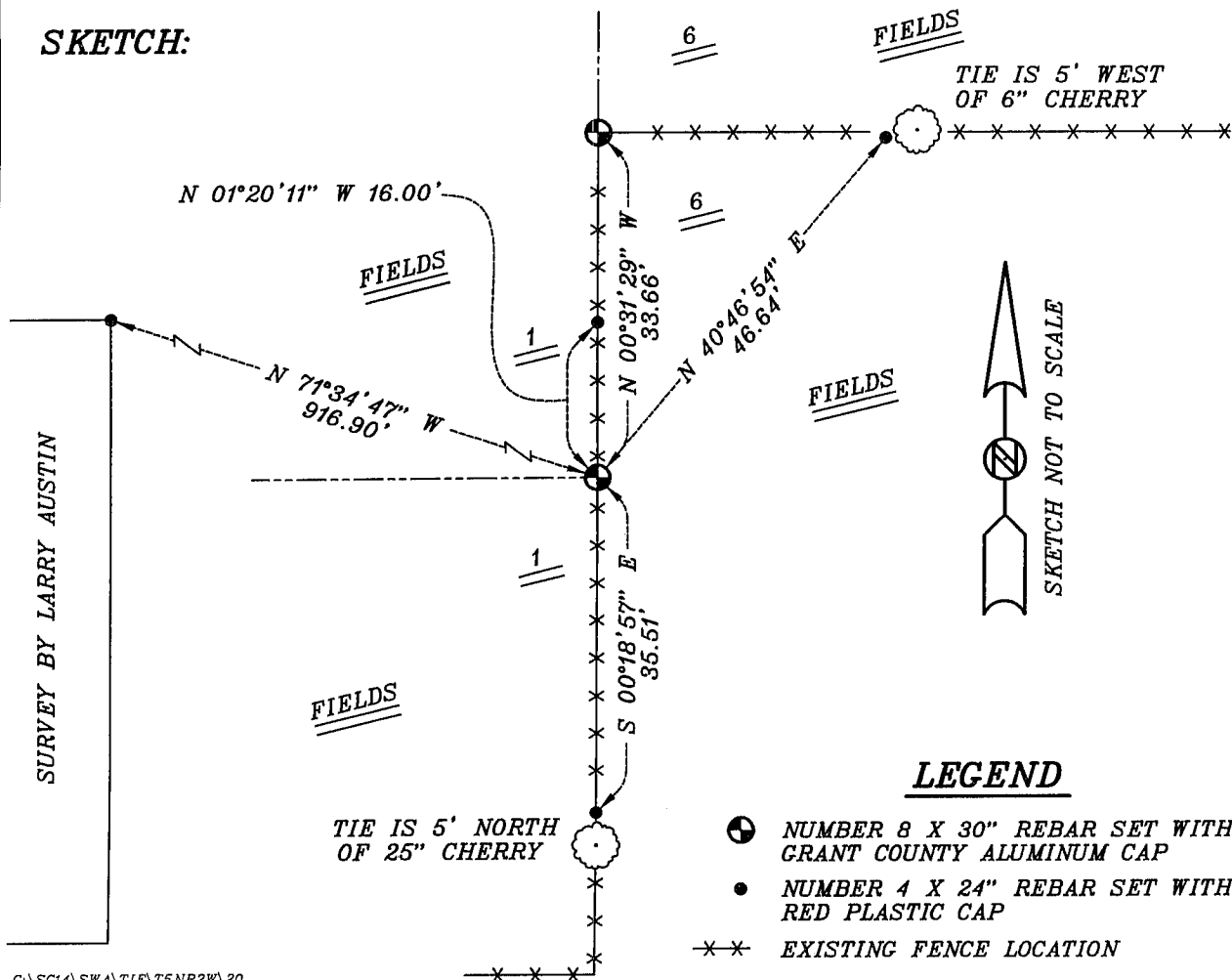
Corner was set in 1832 by Sibley.
Corner was tied to in 1890 by Herbert Goold.
No mention of monument on survey.

DESCRIPTION OF CORNER EVIDENCE FOUND:

I found no evidence of the location of the corner.
I reset the corner at the proportioned offset from the West 1/4 corner of Section 06.
I accepted this location after an E.D.M. and G.P.S. traverse of the area.

DESCRIPTION OF CORNER AND WITNESS MONUMENTS, REFERENCES AND ACCESSORIES USED TO PERPETUATE THE ORIGINAL OR RE-ESTABLISHED LOCATION OF THIS CORNER:
WITNESS TO THE CORNER LOCATION: BOBBY SEDGWICK ; SHELBY BLINDERT

SKETCH:



LEGEND

- NUMBER 8 X 30" REBAR SET WITH GRANT COUNTY ALUMINUM CAP
- NUMBER 4 X 24" REBAR SET WITH RED PLASTIC CAP
- xx EXISTING FENCE LOCATION