

# U.S. PUBLIC LAND SURVEY MONUMENT RECORD - GRANT COUNTY, WI

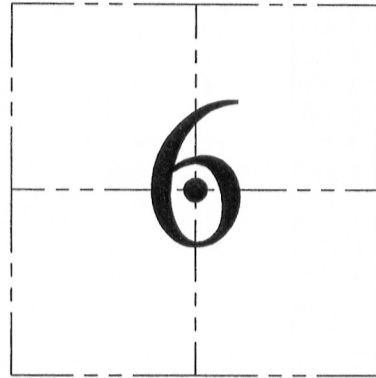
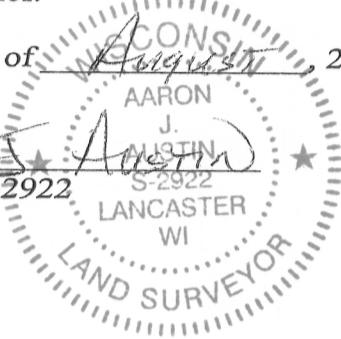
Section 6, Town 5 North Range 2 West, Town of Liberty

**CERTIFICATE:**

I, Aaron J. Austin, do hereby certify that the corner location on this record was determined by me and/or under my direct supervision and that this U.S. Public Land Survey Monument Record is correct and complete to the best of my knowledge and belief.

Dated this 15 day of August, 2013.

*Aaron J. Austin*  
 Aaron J. Austin, S-2922



● = CORNER LOCATION

HISTORY OF CORNER ESTABLISHMENT:

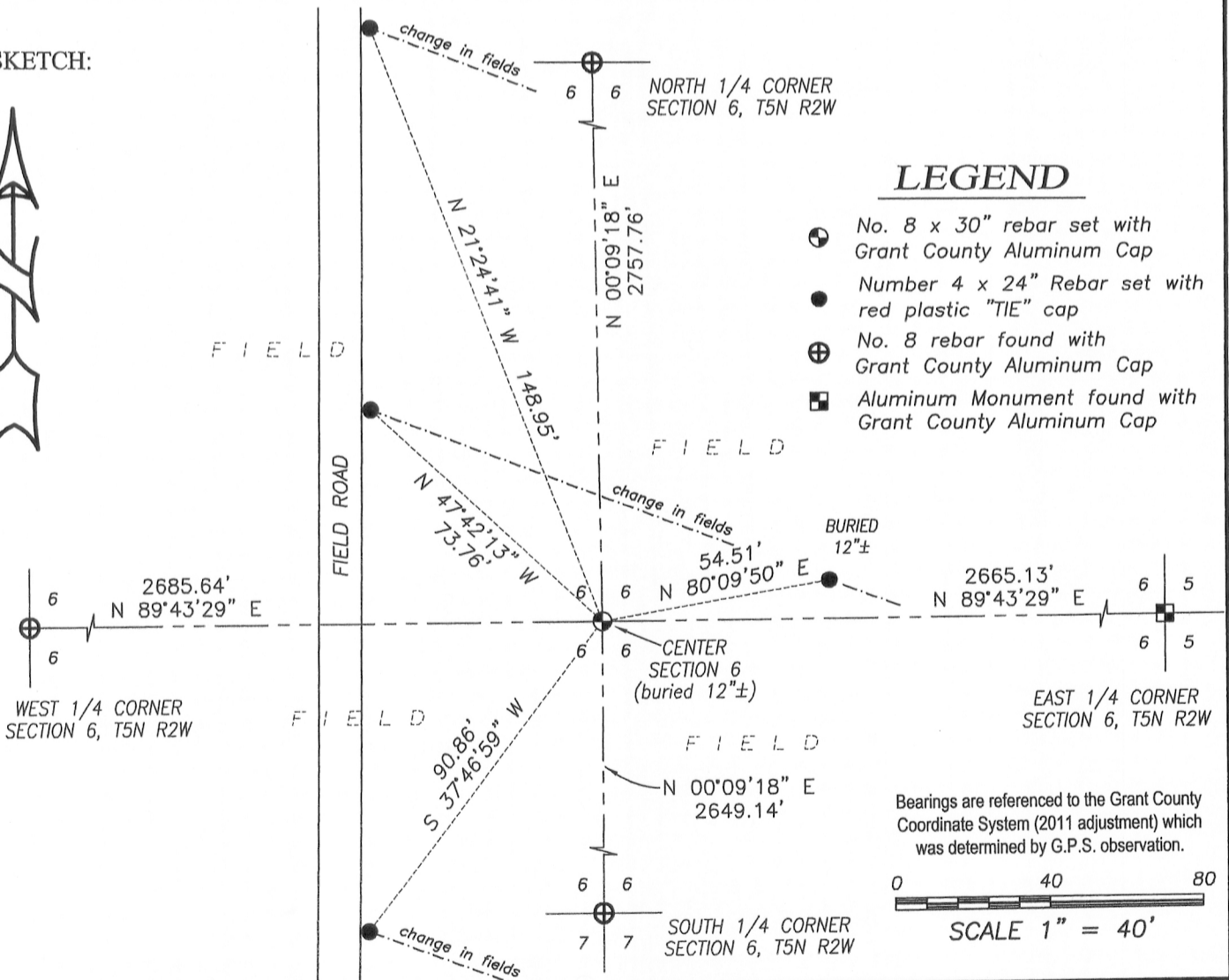
Corner was not set with original survey. A stone was set for this corner on a survey filed in Book "C", Page 157 by Hayden in 1857. No other record of this corner was found.

DESCRIPTION OF CORNER EVIDENCE FOUND:

No evidence for this corner was found. Corner was set at the intersection of the East-West 1/4 line and the North-South 1/4 line of Section 6. Corner location was verified by E.D.M. and G.P.S methods.

DESCRIPTION OF CORNER AND WITNESS MONUMENTS, references and accessories used to perpetuate the original or re-established location of this corner. Witnesses to corner location Shane Austin.

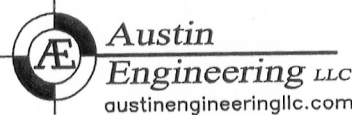
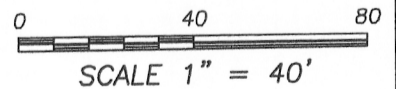
SKETCH:



**LEGEND**

- ⊕ No. 8 x 30" rebar set with Grant County Aluminum Cap
- Number 4 x 24" Rebar set with red plastic "TIE" cap
- ⊕ No. 8 rebar found with Grant County Aluminum Cap
- Aluminum Monument found with Grant County Aluminum Cap

Bearings are referenced to the Grant County Coordinate System (2011 adjustment) which was determined by G.P.S. observation.



4211 HWY 81 E, LANCASTER, WI 53813  
 PHONE: 608-723-6363 FAX: 608-723-6702

JOB NO: 11S192-A  
 G:\GRANTDOT\HWY61B  
 H:\TIE\T5NR2W\14.5

FIELDBOOK: TDSR  
 DRAWN BY: AJ AUSTIN  
 CREW: SW AUSTIN

14.5

AUG 15 2013