

U.S. PUBLIC LAND SURVEY MONUMENT RECORD - GRANT COUNTY, WI

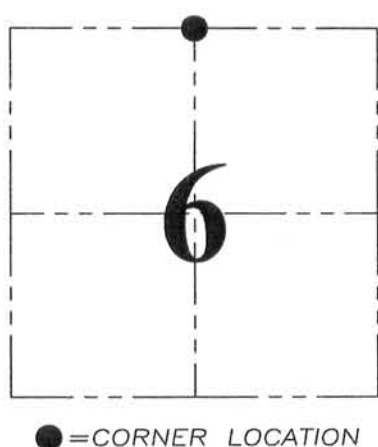
Section 6, Town 5 North Range 2 West, Town of Liberty

CERTIFICATE:

I, Aaron J. Austin, do hereby certify that the corner location on this record was determined by me and/or under my direct supervision and that this U.S. Public Land Survey Monument Record is correct and complete to the best of my knowledge and belief.

Dated this 15 day of August, 2013.

Aaron J. Austin
Aaron J. Austin, S-2922



● = CORNER LOCATION

GRANT COUNTY COORDINATES: N=558967.45 E=833715.91

HISTORY OF CORNER ESTABLISHMENT:

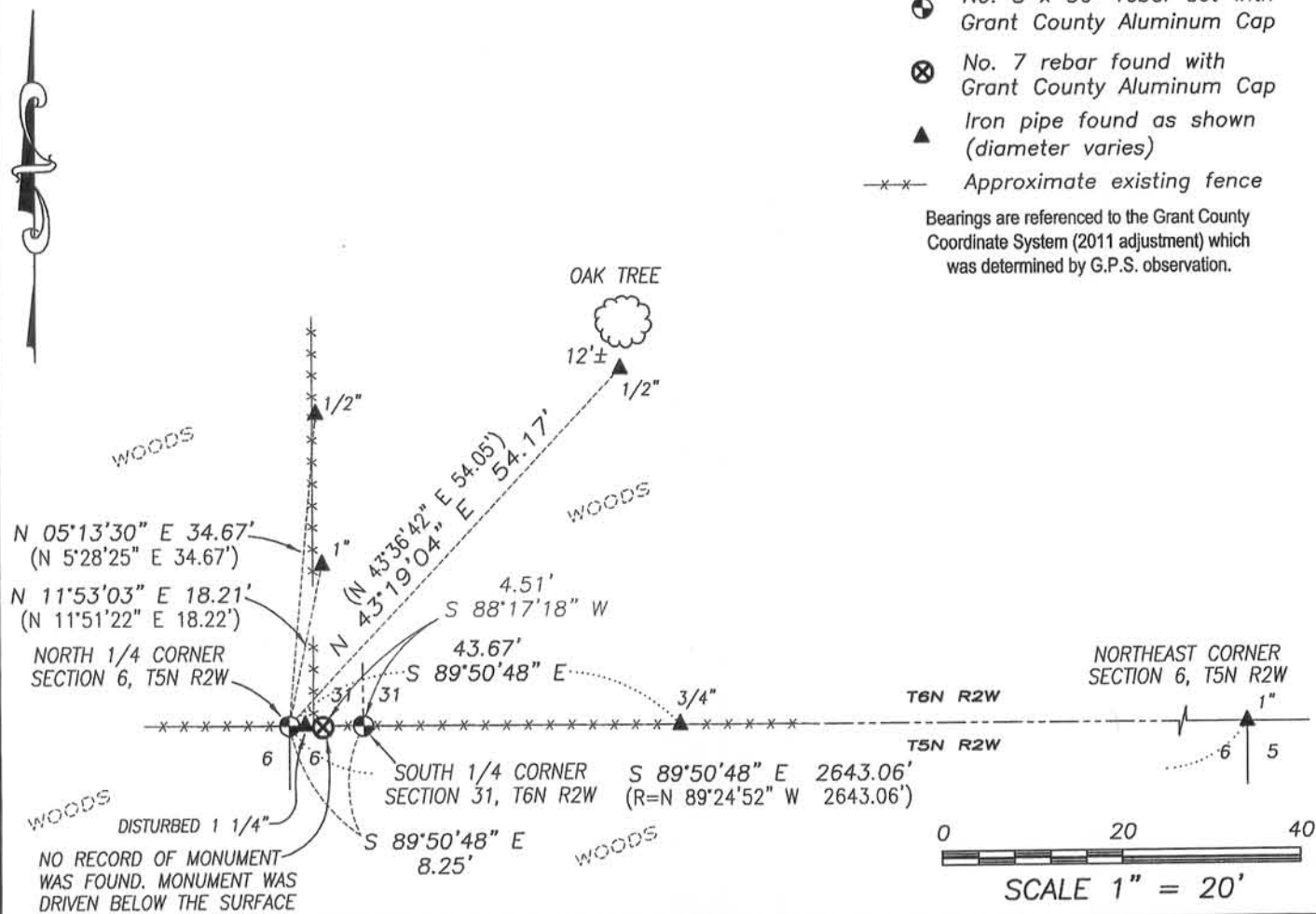
Corner was not set with original survey. In 1995, Michael Larosa tied this corner out in conjunction with a survey filed in Book "W", Page 1. No other record found for this corner.

DESCRIPTION OF CORNER EVIDENCE FOUND:

Michael LaRosa tied this corner out, but did not set a monument. Two ties were found. I reset the corner utilizing existing ties and the dimension to the Northeast corner of Section 6 as shown on the LaRosa survey. It should be noted that I did find a No. 7 rebar with a Grant County Aluminum Cap. I did not accept this corner. No U.S. Public Land Survey Monument record was found and no record of a survey was found showing this monument, therefore, I could not determine which corner this monument intended to mark. I left the monument in place and drove it below the surface. Corner location was verified by E.D.M. and G.P.S methods.

DESCRIPTION OF CORNER AND WITNESS MONUMENTS, references and accessories used to perpetuate the original or re-established location of this corner. Witnesses to corner location Shane Austin

SKETCH:



Austin Engineering LLC
austinengineeringllc.com
4211 HWY 81 E, LANCASTER, WI 53813
PHONE: 608-723-6363 FAX: 608-723-6702

JOB NO: 11S192
G:\GRANTDOT\HWY61B
H:\TIE\T5NR2W\12

FIELDBOOK: TDSR
DRAWN BY: SW AUSTIN
CREW: SW AUSTIN

Survey Monument Record

TYPE OF MONUMENT NO MONUMENT PLACED

STATE PLANE COORDINATES: N _____
E _____

ELEVATION — M.S.L. DATUM: _____

THETA ANGLE: _____

FIELD BOOK: 95-5, 7 (955-782)

PAGE _____

CORNER NO. _____

SECTION 6

TOWN 5N

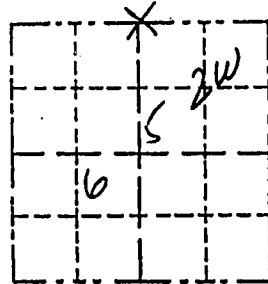
RANGE 2W

OCT 16 1995

BASIS FOR MONUMENT LOCATION

(Use reverse side if necessary)

Show info such as: History of corner, with reference to Vol. and pg., dates, surveyor; exact description of monument replaced; if location computed, by taped or EDM traverse; landowner, remarks, etc.



LOCATION
(Indicated by "X")

- FOUND PERPETUATED LOCATION
- OBLITERATED EVIDENCE LOCATION
- LOST CORNER (RESTORED BY PROPORTIONATE METHODS)



The most recent survey record related to this corner is a survey by Laurence Schmit dated 1/4/79 which was tied to an occupied corner north of this corner. Physical evidence is a 4 way fence intersection with a 3 way fence intersection approximately 1 rod north. Physical evidence exists of a possible ancient roadbed along the town line and a ridge line about 1 rod south of the occupied town line was searched for evidence because it fell closer to the record (Orig. Cont.). distance from the 40 corner to the south. The occupied town line fits nearly perfectly (proportionately) between the 40 corner to the north and the 40 corner to the south and was accepted for northings. The eastings were determined by the projection of existing

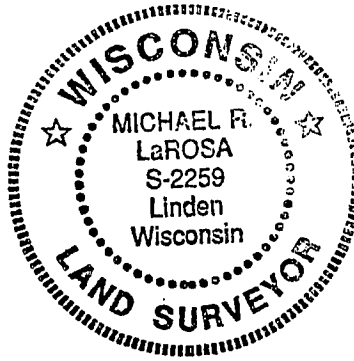
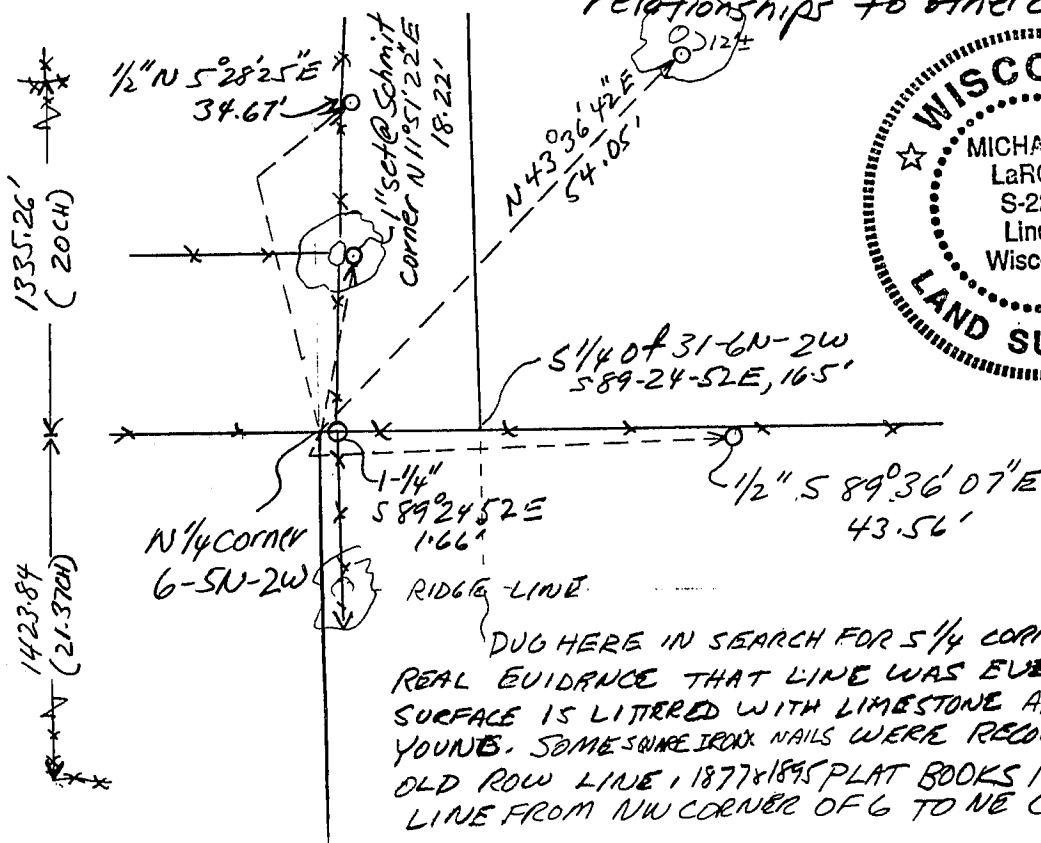
CERTIFIED CORRECT TO THE BEST OF MY KNOWLEDGE AND BELIEF

Michael R. LaRosa
Registered Land Surveyor

DATE: 8/29/95

TIE SKETCH

Show at least three (4) ties and monument Tie Sheet for NE corner (This Date) for relationships to other corners.



1" = 20' ±

Legend

- fence
- Iron Pipe Set
Size as noted
- ⊙ Large Diameter
OAK TREE
- () recorded as