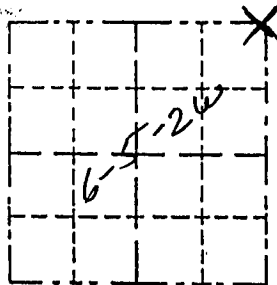


# Survey Monument Record

CORNER NO. 6  
 SECTION 6 TOWNSHIP 5N RANGE 2W  
 TOWN 5N  
 RANGE 2W

TYPE OF MONUMENT 1" Iron Pipe  
 STATE PLANE COORDINATES: N \_\_\_\_\_ E \_\_\_\_\_  
 ELEVATION — M.S.L. DATUM: \_\_\_\_\_  
 THETA ANGLE: \_\_\_\_\_  
 FIELD BOOK: 95-5, 7 (955-181)  
 PAGE \_\_\_\_\_



LOCATION  
(Indicated by "X")

- FOUND PERPETUATED LOCATION
- OBLITERATED EVIDENCE LOCATION
- LOST CORNER (RESTORED BY PROPORTIONATE METHODS)

## BASIS FOR MONUMENT LOCATION

(Use reverse side if necessary)

Show info such as: History of corner, with reference to Vol. and pg., dates, surveyor; exact description of monument replaced; if location computed, by taped or EDM traverse; landowner, remarks, etc.

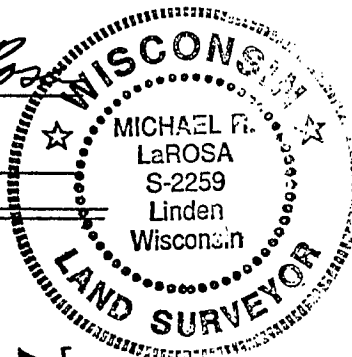
Evidence used FOR CORNER COMPUTATIONS

There are no recent survey records of this corner. Physical evidence is a town road to the east, a driveway to the west and fence to south at the corner location. After a rather extensive traverse of the surrounding area for evidence the corner location was determined by a combination of prorates (see diagram at left). The main coordinates used for calculations are noted with a \*. The corner fell in the centerline of the driveway west.

CERTIFIED CORRECT TO THE BEST OF MY KNOWLEDGE AND BELIEF

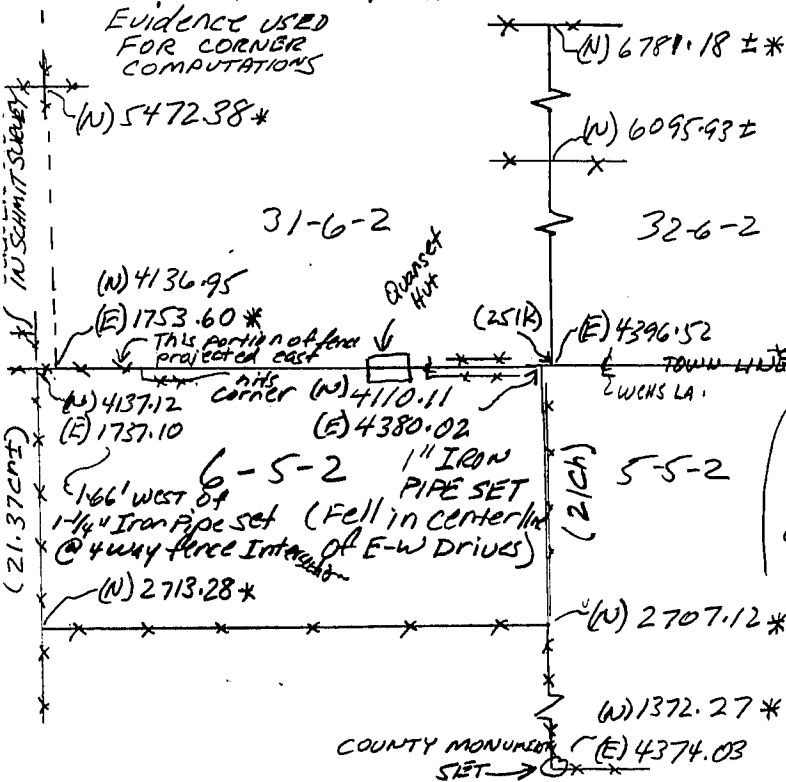
*Michael R. LaRosa*  
 Registered Land Surveyor

DATE: 8/29/95



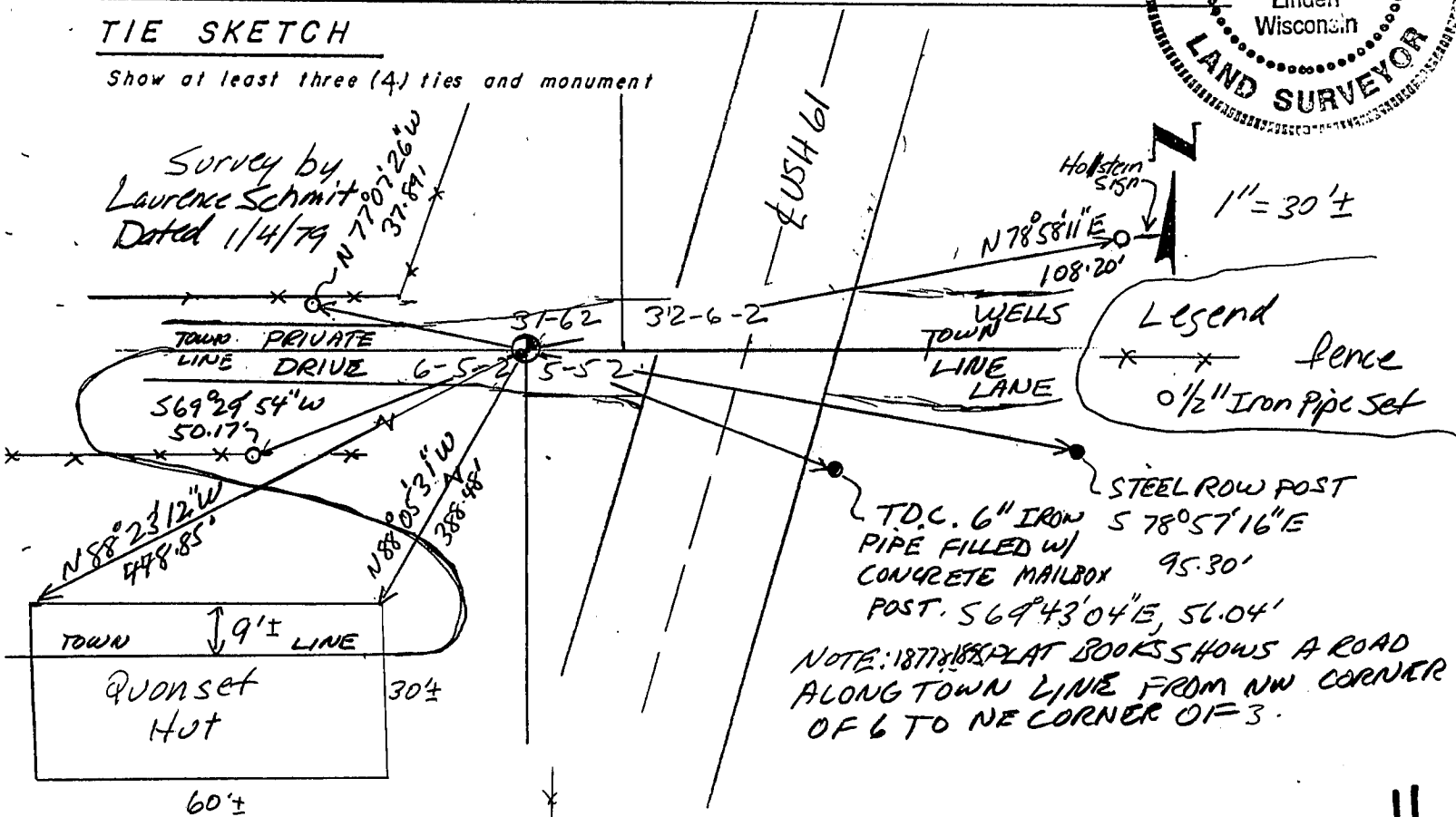
\* (N) 6751.85  
 This corner appears to be 100' or South

\* (N) Schmitt Survey  
 (21.37cmt)



## TIE SKETCH

Show at least three (4) ties and monument



Legend  
 \* \* \* Fence  
 o 1/2" Iron Pipe Set

NOTE: 1877 & 1882 PLAT BOOKS SHOW A ROAD ALONG TOWN LINE FROM NW CORNER OF 6 TO NE CORNER OF 3.