

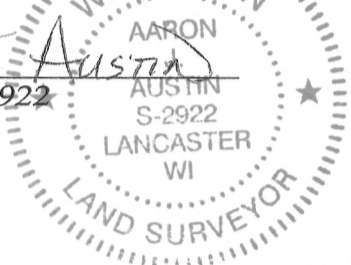
U.S. PUBLIC LAND SURVEY MONUMENT RECORD - GRANT COUNTY, WI

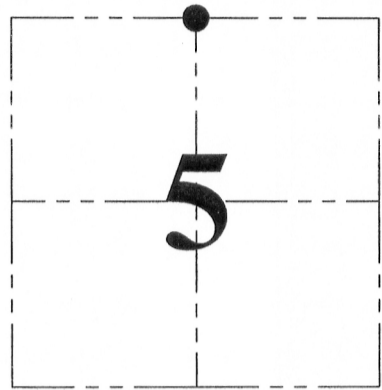
Section 5, Town 5 North Range 2 West, Town of Liberty

CERTIFICATE:

I, Aaron J. Austin, do hereby certify that the corner location on this record was determined by me and/or under my direct supervision and that this U.S. Public Land Survey Monument Record is correct and complete to the best of my knowledge and belief.

Dated this 15 day of August, 2013.

Aaron J. Austin
 Aaron J. Austin, S-2922




● = CORNER LOCATION

GRANT COUNTY COORDINATES: N=558967.18 E=839018.81

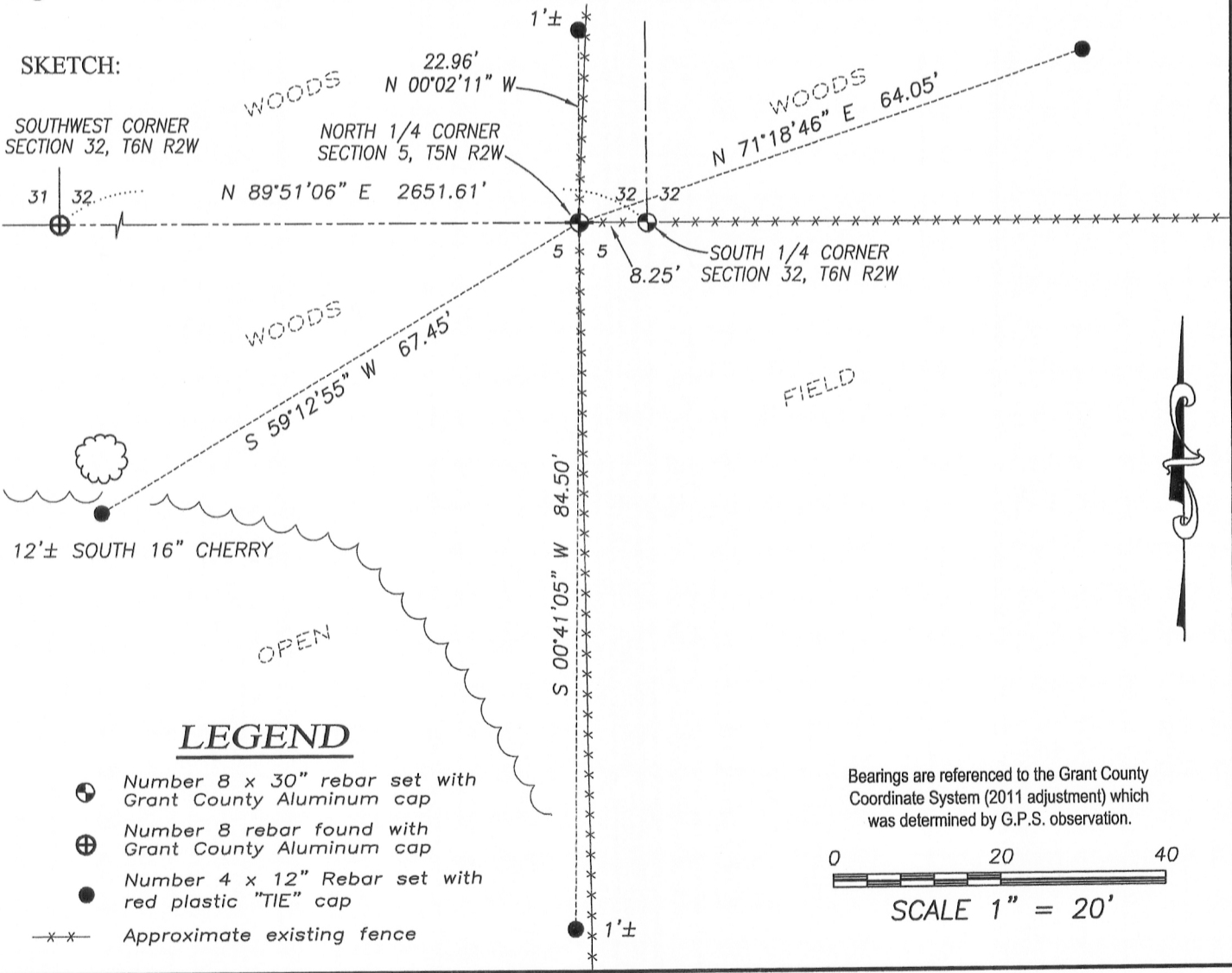
HISTORY OF CORNER ESTABLISHMENT:

Corner was not originally set.

DESCRIPTION OF CORNER EVIDENCE FOUND:

Corner set at existing fence corner on the South line of Section 32, T6N R2W. Location was verified by G.P.S. and E.D.M. methods.

DESCRIPTION OF CORNER AND WITNESS MONUMENTS, references and accessories used to perpetuate the original or re-established location of this corner. Witnesses to corner location Shane Austin



 **Austin Engineering LLC**
 austinengineeringllc.com
 4211 HWY 81 E, LANCASTER, WI 53813
 PHONE: 608-723-6363 FAX: 608-723-6702

JOB NO: 11S192
 G:\GRANTDOT\HWY61B
 H:\TIE\T5NR2W\10

FIELDBOOK: TDSR
 DRAWN BY: SW AUSTIN
 CREW: SW AUSTIN

AUG 15 2013