

U.S. PUBLIC LAND SURVEY MONUMENT RECORD - GRANT COUNTY, WI

Section 2, Town 5 North Range 2 West, Town of Liberty (a)

NOTE: This form is intended and designed to fulfill all requirements of the Wisconsin Administrative Code Chapter A-E 7.08, U.S. Public Land Survey Monument Record (3) (a) (b) (c) (d) (e) (f) (g) (h) (i).

CERTIFICATE: (i)

I, Aaron J. Austin, Wisconsin Professional Land Surveyor, do hereby certify that the corner location on this record was determined by me and/or under my direct supervision and that this U.S. Public Land Survey Monument Record is correct and complete to the best of my knowledge and belief.

Dated this 11th day of December, 2024.

Aaron J. Austin

Aaron J. Austin, S-2922

Grant County Coordinates:
 NAD 83 (2011)
 Northing: 558,948.42
 Easting: 854,973.15



⊙ = CORNER LOCATION

HISTORY OF CORNER ESTABLISHMENT:

Corner was not set with the Original Government Survey. No other record of this corner being established was found.

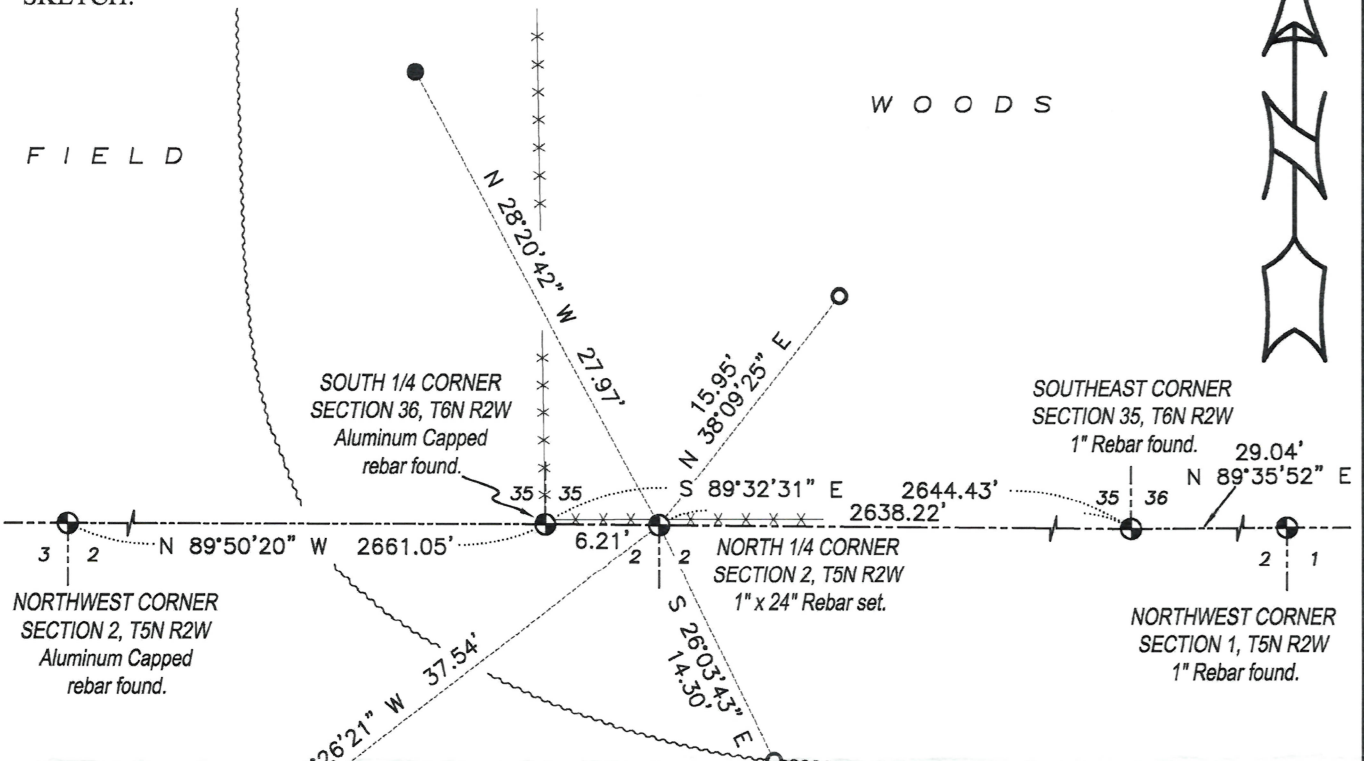
DESCRIPTION OF CORNER EVIDENCE FOUND: (b) (f) (g) (h)

I set a 1" x 24" Rebar on the South line of Section 35 equidistant between the Northwest of Section 2 and Northeast of Section 2. I established four witness corners after I verified the Monument's location with G.P.S. and E.D.M. methods.

DESCRIPTION OF CORNER AND WITNESS MONUMENTS, references and accessories used to perpetuate the original or re-established location of this corner. (c) (d) (e)

Witnesses to corner location Owen Austin, Tanner Austin.
 Drawn by: Owen Austin.

SKETCH:



LEGEND

- ⊙ Section Corner—as designated
- 1/2" rebar found
- 3/4" x 18" rebar set
- x-x-x- Existing fence
- ~~~~~ Edge of field

