

52003

# U.S. PUBLIC LAND SURVEY MONUMENT RECORD - GRANT COUNTY, WI

Section 1, Town 5 North Range 2 West, Town of Liberty (a)

NOTE: This form is intended and designed to fulfill all requirements of the Wisconsin Administrative Code Chapter A-E 7.08, U.S. Public Land Survey Monument Record (3) (a) (b) (c) (d) (e) (f) (g) (h) (i).

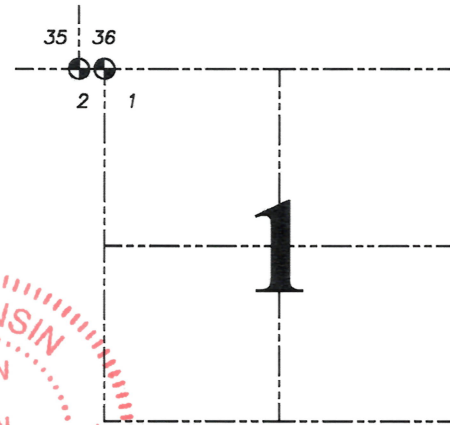
### CERTIFICATE: (i)

I, Aaron J. Austin, Wisconsin Professional Land Surveyor, do hereby certify that the corner location on this record was determined by me and/or under my direct supervision and that this U.S. Public Land Survey Monument Record is correct and complete to the best of my knowledge and belief.

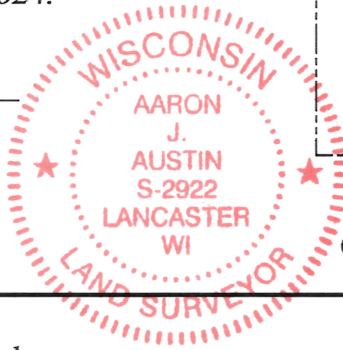
Dated this 11th day of December, 2024.

*Aaron J. Austin*

Aaron J. Austin, S-2922



● = CORNER LOCATION



Grant County Coordinates:  
NAD 83 (2011)  
Northing: 558,927.54  
Easting: 857,640.33

### HISTORY OF CORNER ESTABLISHMENT:

Original corner was set in 1832 by Parke.  
No other record of this corner being set was found.

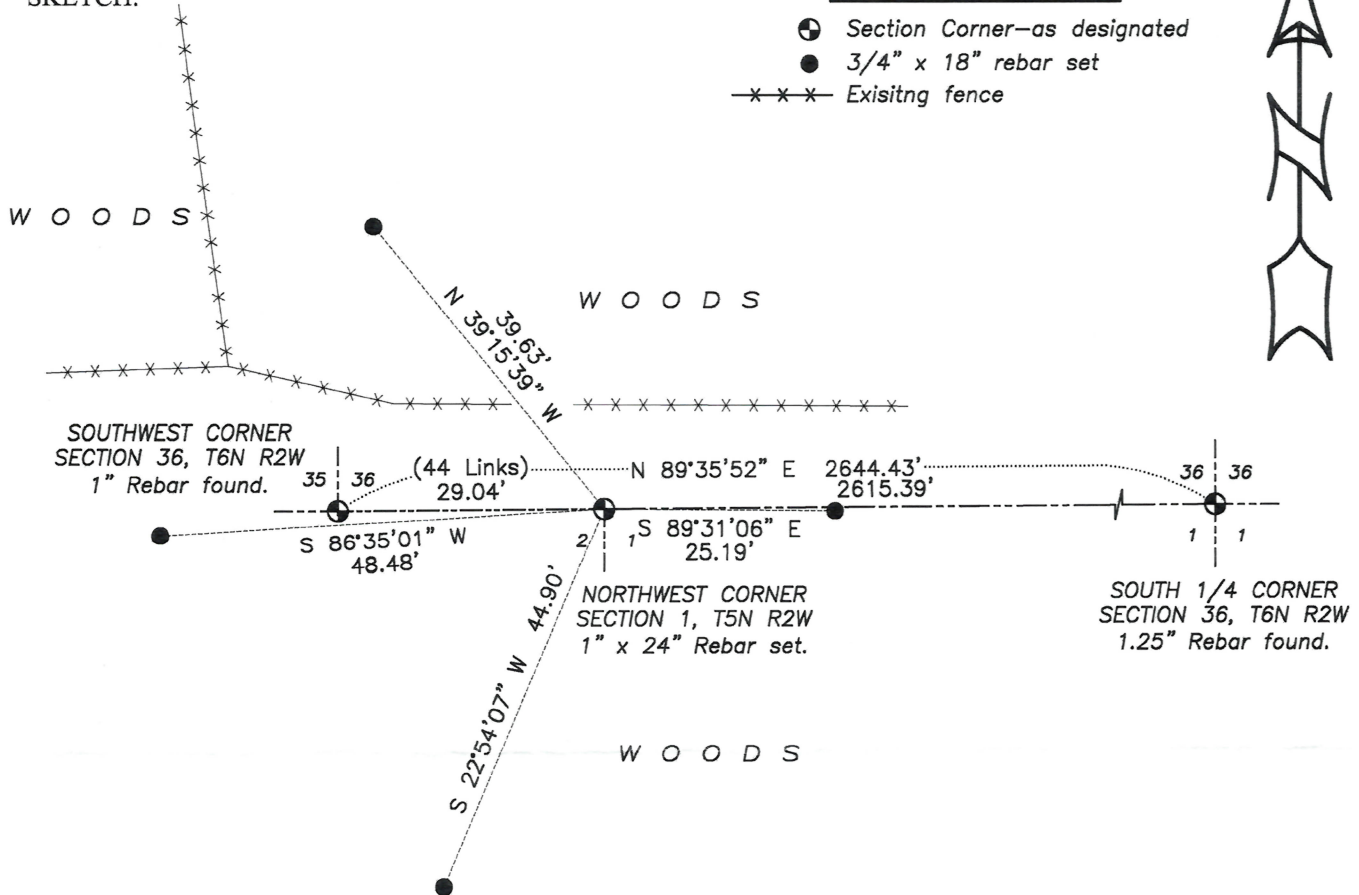
### DESCRIPTION OF CORNER EVIDENCE FOUND: (b) (f) (g) (h)

I set a 1" x 24" Rebar online between the Southwest corner of Section 36 and the South 1/4 of Section 36 at the recorded offset of 0.44 chains. I set four witness corners after I verified the Monument's location G.P.S. and E.D.M. methods.

### DESCRIPTION OF CORNER AND WITNESS MONUMENTS, references and accessories used to perpetuate the original or re-established location of this corner. (c) (d) (e)

Witnesses to corner location Shane Austin, Owen Austin, Tanner Austin.  
Drawn by: Owen Austin.

### SKETCH:



### LEGEND

- Section Corner—as designated
- 3/4" x 18" rebar set
- x-x-x- Existing fence



0 20 40  
SCALE 1" = 20'

Job#24S201  
H:\CRD\24S201  
H:\TIE\T5NR2W\3