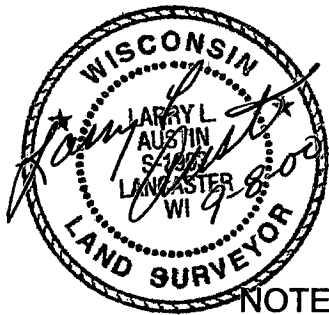
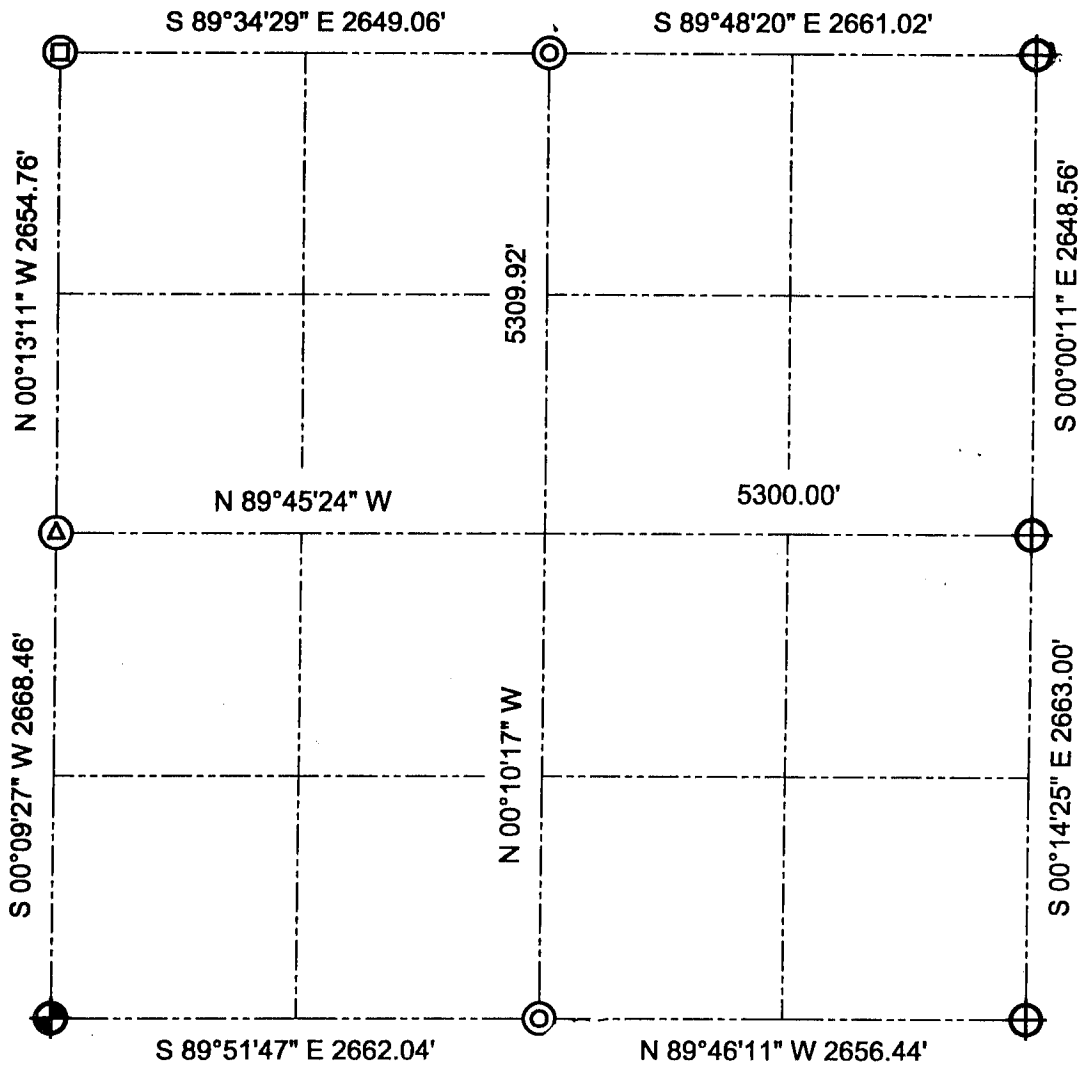


GRANT COUNTY SECTION SUMMARY

36
SECTION
-
5N
TOWN
-
1W
RANGE



LEGEND

- Railroad spike set
- Number 10 rebar found
- Aluminum Monument found
- P.K. Nail found
- Number 6 rebar found

NOTE:

Relationships of all section corners to other section corners shall be shown hereon by bearing and distance or grid coordinates.
--Bearing reference below--



Bearings referenced to the East-West 1/4 line of the Section 36,
which is assumed to bear N 89°45'24" W.