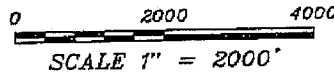
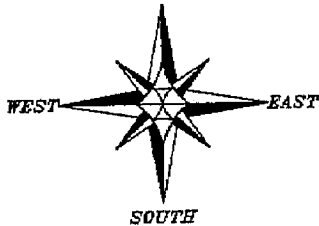
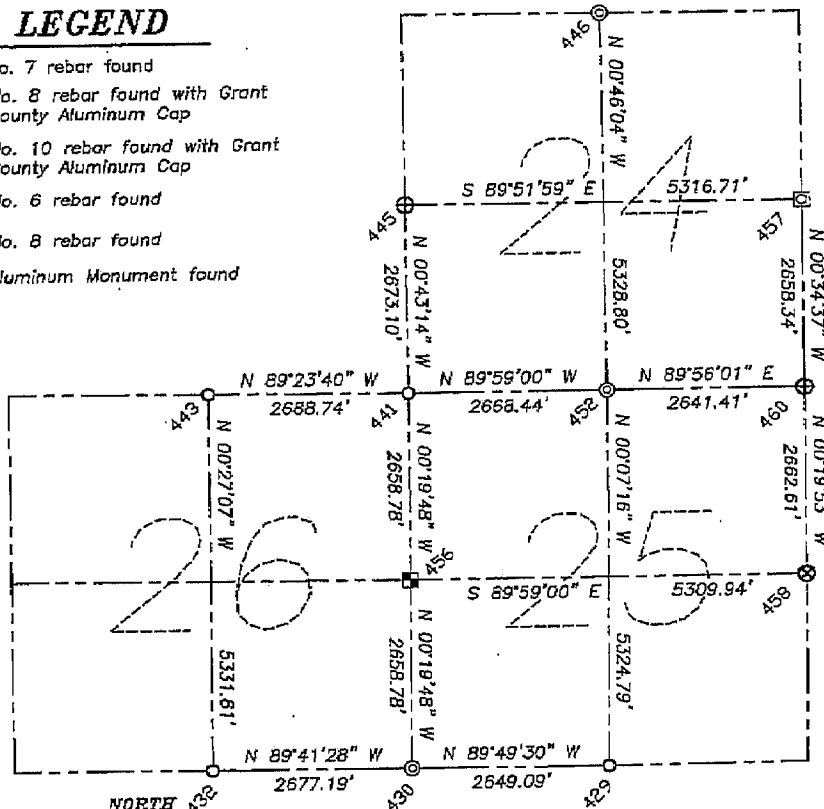


SECTION CORNER SUMMARY

SECTIONS 24-26, T5N R1W, CLIFTON TOWNSHIP, GRANT COUNTY, WISCONSIN
 U.S.H. 80, PLATTEVILLE TO MONTFORT, GRANT COUNTY, WISCONSIN
 PROJECT ID: 5035-00-01

LEGEND

- ⊗ No. 7 rebar found
- ⊕ No. 8 rebar found with Grant County Aluminum Cap
- ⊞ No. 10 rebar found with Grant County Aluminum Cap
- No. 6 rebar found
- ⊠ No. 8 rebar found
- ⊙ Aluminum Monument found



COORDINATES SHOWN HEREON ARE GRANT COUNTY COORDINATES AS PROVIDED BY THE WISCONSIN DEPARTMENT OF TRANSPORTATION.

SURVEYOR'S CERTIFICATE:

I, Larry L. Austin, Registered Wisconsin Land Surveyor, hereby certify:
 That the corners shown on this survey were surveyed, mapped and monumented as shown on this plat by me or under my direct supervision.
 That this survey was prepared under the instructions of Steve Ivarty, of the Wisconsin Department of Transportation.
 That to the best of my knowledge and belief, this plat is an accurate representation thereof.
 That all plans that do not show a seal imprint in red ink may contain unauthorized alterations.
 The certification contained on this document shall not apply to any copies.

Dated this 6th day of May, 2005

Larry L. Austin
 Larry L. Austin, S-1303

POINT	NORTHING	EASTING
429	532187.92	892231.26
430	532196.01	889582.18
432	532210.44	886905.03
441	537513.47	889551.56
443	537541.88	886862.97
445	540186.36	889517.94
446	542841.01	892148.59
452	537512.69	892220.00
456	534854.74	889566.87
457	540173.96	894834.64
458	534853.19	894876.81
460	537515.75	894861.41



Austin
 Engineering *inc*

4211 HWY B1 E, LANCASTER, WI 53813
 PHONE 608-723-6363 FAX 608-723-6702

Prepared For: WISCONSIN DEPT. OF TRANSPORTATION

JOB NO: 05S050
 FIELDBOOK: TDSR, 2514
 G:\GRANTDOT\T5NR1W
 H:\PLAT\GRANTDOT\05S050-T5NR1W

DRAWN BY: SW AUSTIN
 APPROVED: LL AUSTIN
 CREW: BS-SA-BD-SB

SHEET 4 OF 5