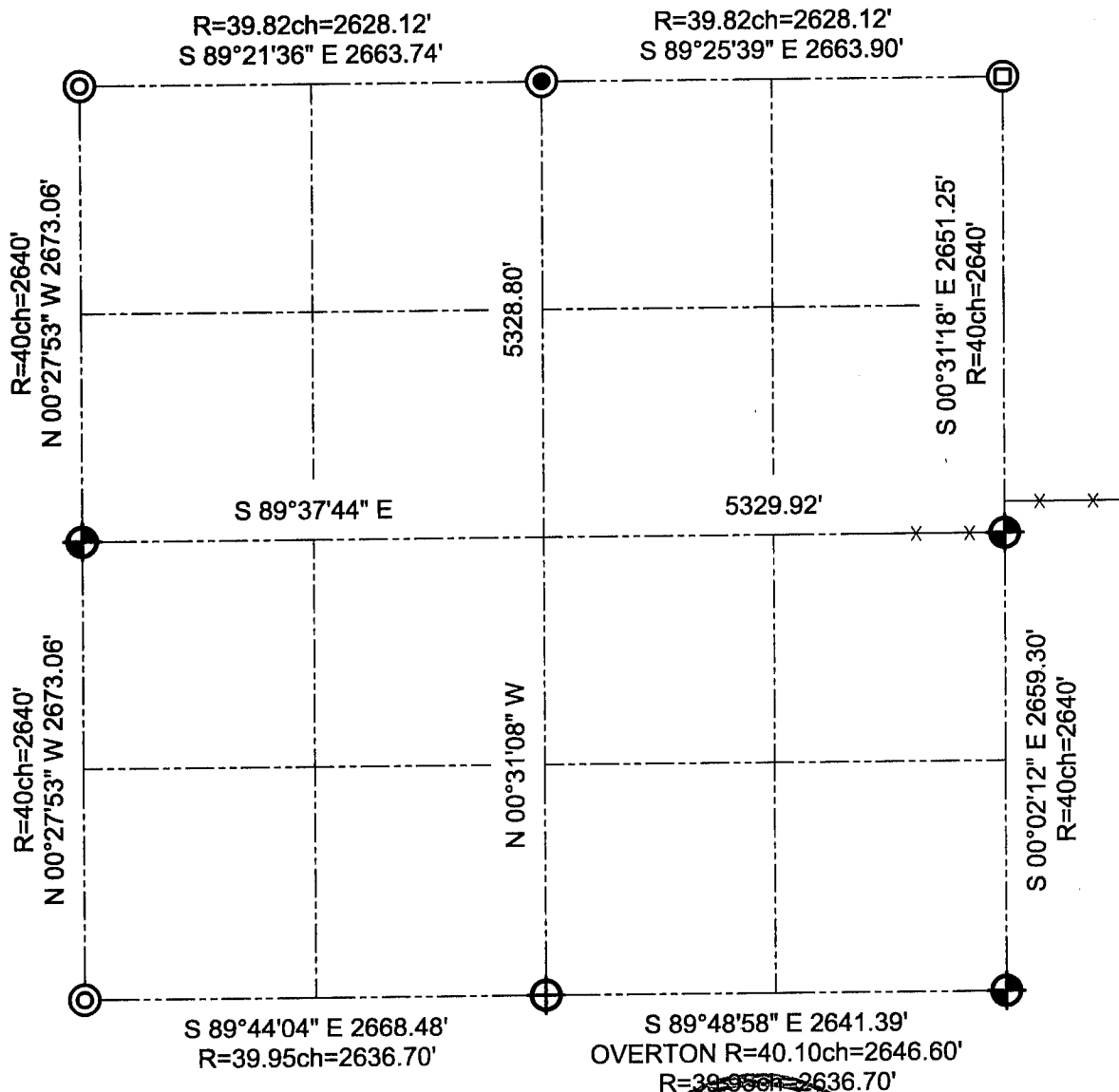







GRANT COUNTY SECTION SUMMARY

$\frac{24}{SECTION} - \frac{5N}{TOWN} - \frac{1W}{RANGE}$



LEGEND

-  Number 8 x 30" rebar set with Grant County Aluminum Cap
-  Aluminum monument found
-  Number 6 rebar found with Grant County Aluminum Cap
-  Number 6 rebar found
-  1 1/4" iron rod found



Relationships of all section corners to other section corners shall be shown hereon by bearing and distance or grid coordinates.
~Bearing reference below~



Bearings referenced to the East line of the Southeast Quarter of Section 24, which is assumed to bear S 00°02'12" E.

AUSTIN ENGINEERING, LLC
4211 HWY 81 E, LANCASTER, WI 53813
PHONE 608-723-6363 FAX 608-723-6702

FIELDBOOK: SDR33, 2033
G:\T5NR1W\36B
C:\SC14\SWA\T5NR1W\24SUM

DRAWN BY: SW AUSTIN
APPROVED: LL AUSTIN
CREW: BS - SB - SA - TF