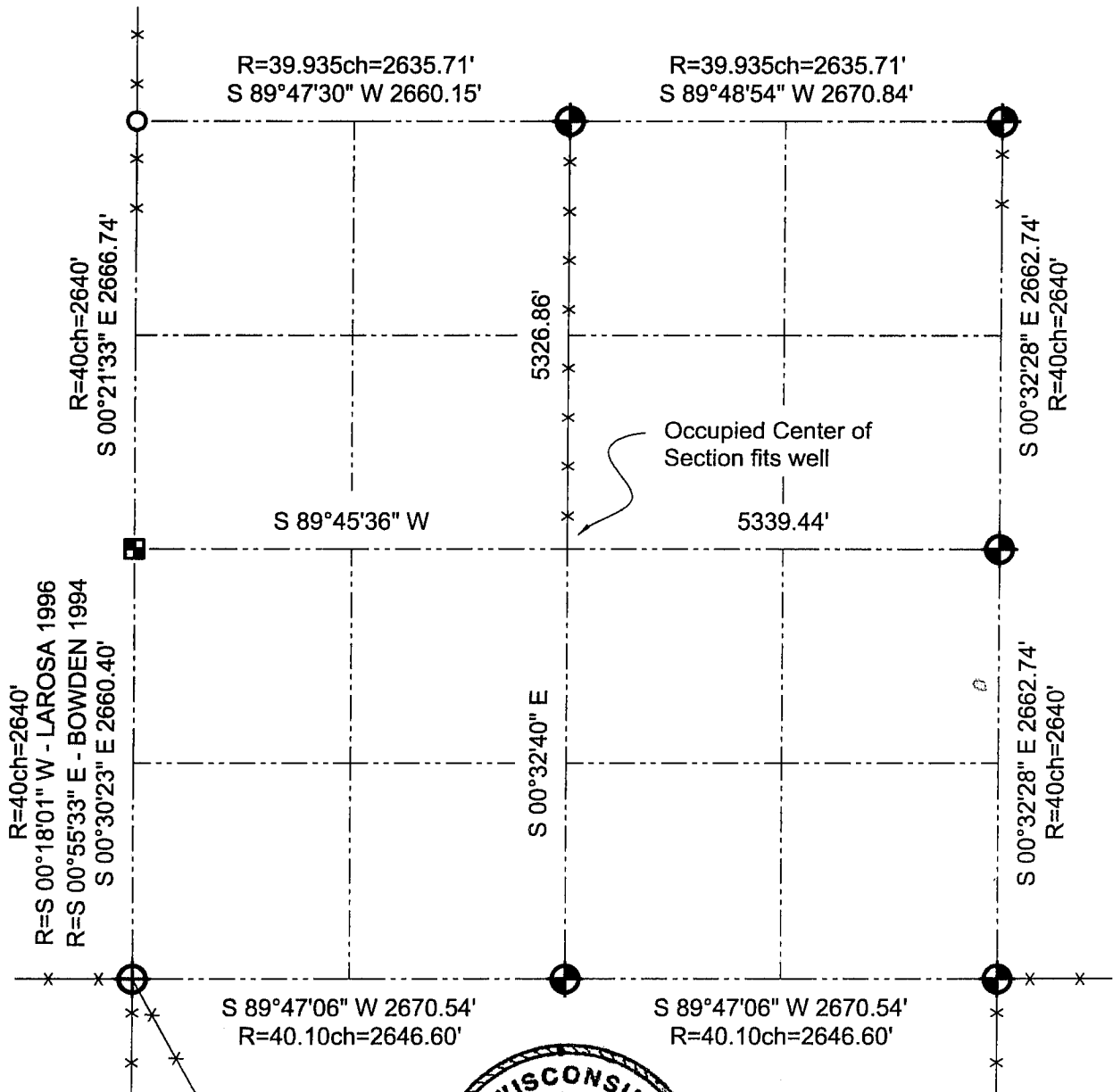
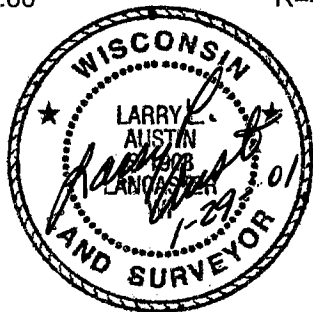


# GRANT COUNTY SECTION SUMMARY





10   -   5N   -   1W  
SECTION   TOWN   RANGE



Occupied Center of  
Section fits well



### LEGEND

-  Number 8 x 30" rebar set with Grant County Aluminum Cap
-  Existing Number 6 rebar
-  Existing 6" well casing (fence corner)
-  Existing Number 10 rebar

### NOTE:

Relationships of all section corners to other section corners shall be shown hereon by bearing and distance or grid coordinates.  
~Bearing reference below~



Bearings referenced to the East-West quarter line of  
Section 10, which is assumed to bear S 89°45'36" W.

**AUSTIN ENGINEERING, LLC**  
4211 HWY 81 E, LANCASTER, WI 53813  
PHONE 608-723-6363 FAX 608-723-6702

FIELDBOOK: SDR33, 2038  
G:\T5NR1W\36B  
C:\SC14\SWA\TIE\T5NR1W\10SUM

DRAWN BY: SW AUSTIN  
APPROVED: LL AUSTIN  
CREW: BS - SB - SA - TF