

GRANT COUNTY
U.S. PUBLIC LAND SURVEY MONUMENT RECORD

INSTRUCTIONS: THIS RECORD SHALL SHOW THE LOCATION OF THE CORNER AND SHALL INCLUDE ALL OF THE FOLLOWING ELEMENTS (A THROUGH I).

(A) IDENTIFY THE CORNER AS REFERENCED TO THE U.S. PUBLIC LAND SURVEY SYSTEM

■ = CORNER MONUMENT RESTORED

WITNESSES TO CORNER LOCATION:

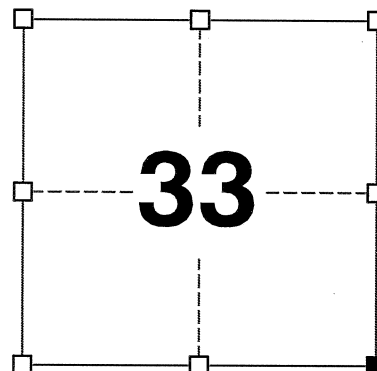
TODD C. PATTON
PAIGE O. JELINEK

GEOGRAPHIC COORDINATES,
NAD 83 (2011) ADJUSTMENT:

LATITUDE: 42° 51' 23.54337"
LONGITUDE: 90° 29' 13.46695"

WISCONSIN COORDINATE REFERENCE SYSTEM (WISCRS),
GRANT COUNTY, NAD 83 (2011) ADJUSTMENT:

NORTHING: 526,919.570
EASTING: 878,912.110



SECTION 33
TOWNSHIP 5 NORTH, RANGE 1 WEST
TOWN OF CLIFTON

(B) DESCRIBE ANY RECORD EVIDENCE, MONUMENT EVIDENCE, OCCUPATIONAL EVIDENCE, TESTIMONIAL EVIDENCE OR ANY OTHER MATERIAL EVIDENCE YOU CONSIDERED, AND WHETHER THE MONUMENT WAS FOUND OR PLACED.

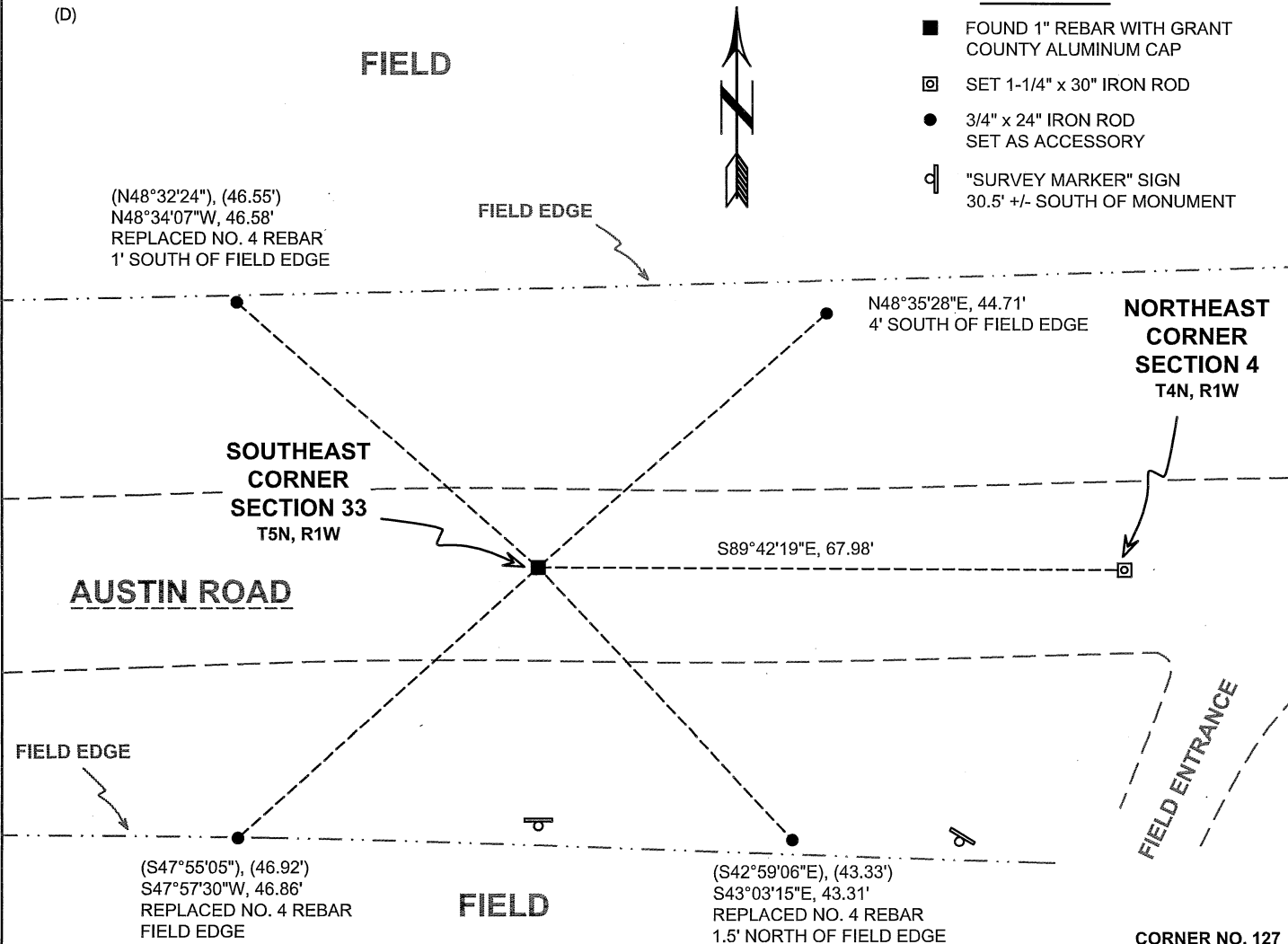
I COULD FIND NO MONUMENTS OR BEARING TREES FROM THE ORIGINAL GOVERNMENT SURVEY. I RECOVERED A 1" REBAR WITH A GRANT COUNTY ALUMINUM CAP REPORTED BY LARRY AUSTIN. I ACCEPTED THIS LOCATION AS THE BEST AVAILABLE EVIDENCE OF THE ORIGINAL GOVERNMENT CORNER AND LEFT THIS MONUMENT IN PLACE.

(C) IN THE PLAN VIEW DRAWING BELOW, PROVIDE REFERENCE TIES TO AT LEAST 4 WITNESS MONUMENTS. WITNESS MONUMENTS SHALL BE MADE OF CONCRETE, NATURAL STONE, IRON, BEARING TREES OR ANY OTHER EQUALLY DURABLE MATERIAL. DEPICT THE RELEVANT MONUMENTS AND REFERENCE TIES WITH SUFFICIENT DETAIL TO ENABLE ACCURATE RELOCATION OF THE CORNER IF THE CORNER MONUMENT IS DISTURBED.

(D)

LEGEND:

- FOUND 1" REBAR WITH GRANT COUNTY ALUMINUM CAP
- SET 1-1/4" x 30" IRON ROD
- 3/4" x 24" IRON ROD SET AS ACCESSORY
- ⊔ "SURVEY MARKER" SIGN 30.5' +/- SOUTH OF MONUMENT



51127

(E) DESCRIBE ANY MATERIAL DISCREPANCY BETWEEN THE LOCATION OF THE CORNER AS RESTORED OR REESTABLISHED AND THE LOCATION OF THAT CORNER AS PREVIOUSLY RESTORED OR REESTABLISHED BY DISTANCE AND DIRECTION. SHOW THE DISCREPANCY ON THE PLAN VIEW DRAWING UNDER (D), ABOVE. SHOW THE DISTANCES BETWEEN THE CORNER AS PREVIOUSLY RESTORED OR REESTABLISHED AND (1) THE CORNER AS RESTORED OR REESTABLISHED, AND (2) TO AT LEAST 2 OF THE WITNESS MONUMENTS SHOWN ON THE DRAWING IN (D) ABOVE.

N/A

(F) WAS THE CORNER RESTORED THROUGH ACCEPTANCE OF (1) AN OBLITERATED EVIDENCE LOCATION, OR (2) A FOUND PERPETUATED LOCATION?

(2) A FOUND PERPETUATED LOCATION.

(G&H) WAS THE CORNER REESTABLISHED THROUGH LOST CORNER PROPORTIONATE METHODS? IF SO, SHOW THE METHOD, INCLUDING THE DIRECTIONS AND DISTANCES TO OTHER PUBLIC LAND SURVEY CORNERS USED AS EVIDENCE OR USED FOR PROPORTIONING IN DETERMINING THE CORNER LOCATION.

N/A

CORNER HISTORY

THE ORIGINAL GOVERNMENT CORNER WAS ESTABLISHED BY LUCIUS LYON IN THE SECOND QUARTER OF 1832.

IN A TIE SHEET DATED 3 NOVEMBER 2003, LARRY AUSTIN REPORTED SETTING A NO. 8 X 30" REBAR WITH A GRANT COUNTY ALUMINUM CAP AT THE CORNER.

IN A LAND TITLE SURVEY LAST REVISED 12 NOVEMBER 2012, AARON AUSTIN REPORTED FINDING A NO. 8 REBAR WITH A GRANT COUNTY ALUMINUM CAP AT THE CORNER.

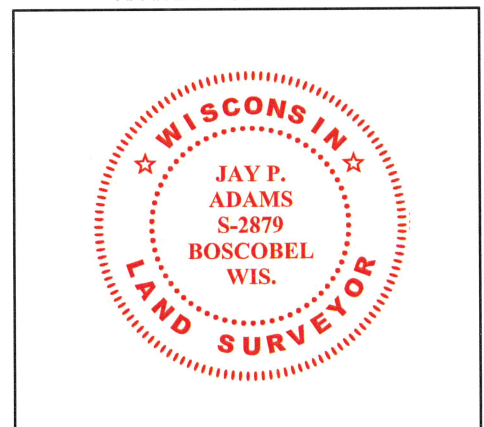
(I) I, JAY P. ADAMS, P.L.S. - 2879, CERTIFY THAT THE CORNER LOCATION SHOWN ON THIS RECORD WAS DETERMINED BY ME OR UNDER MY DIRECTION AND CONTROL AND THAT THIS U.S. PUBLIC LAND SURVEY MONUMENT RECORD IS CORRECT AND COMPLETE TO THE BEST OF MY KNOWLEDGE AND BELIEF.

SIGNATURE

28 OCTOBER 2022

DATE

AFFIX LAND SURVEYOR SEAL



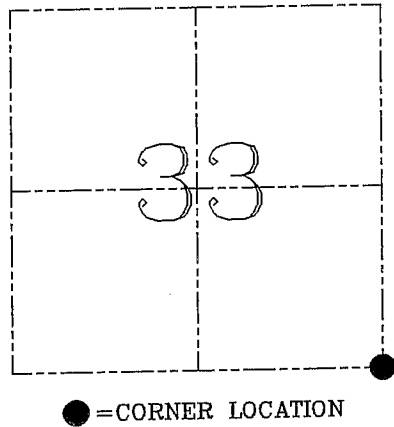
U.S. PUBLIC LAND SURVEY MONUMENT RECORD / - GRANT COUNTY, WI
Section 33, Town 5 North Range 1 West, Town of Clifton

CERTIFICATE

I, Larry L. Austin, do hereby certify that the corner location on this record was determined by me and/or under my direct supervision and that this U.S. public land survey monument record is correct and complete to the best of my knowledge and belief.

Dated this 3rd day of November, 2005

Larry L. Austin
 Larry L. Austin S-1903



HISTORY OF CORNER ESTABLISHMENT

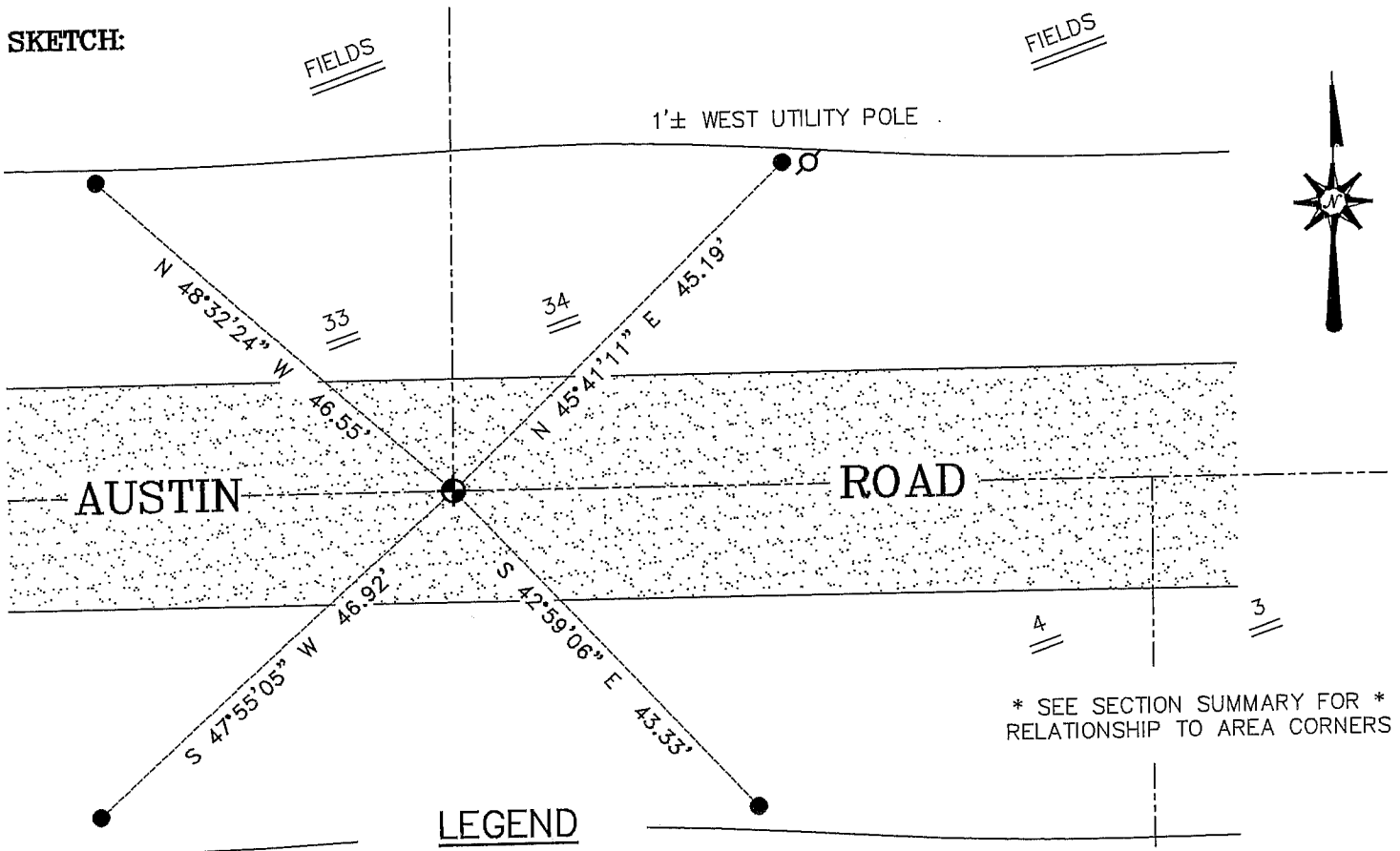
Corner was originally set in 1832 by Sibley.
 In 1892 Sampson was at the corner.
 No other record of the corner was found.

DESCRIPTION OF CORNER EVIDENCE FOUND

I reset the corner proportionately between the adjacent corners.
 Verified this location using EDM & GPS methods.

DESCRIPTION OF CORNER AND WITNESS MONUMENTS, references and accessories used to perpetuate the original or re-established location of this corner. Witnesses to corner location Bobby Sedgwick & Shelby Blindert & Brad Digman

SKETCH:



LEGEND

- Number 8 x 30" rebar set with Grant County Aluminum Cap
- Number 4 x 24" Rebar set with red plastic "TIE" cap
- Approximate existing fence

SKETCH NOT TO SCALE

AUSTIN ENGINEERING, LLC

4211 HWY 81 EAST, LANCASTER, WI 53813
 PHONE 608-723-6363 FAX 608-723-6702

FIELDBOOK: TDS RNGR, 2314
 G: \T5NR1W\32
 H: \TIE\T5NR1W\127
 JOB NUMBER 03S295

DRAWN BY: SW AUSTIN
 APPROVED: LL AUSTIN

CORNER NUMBER 127