

**GRANT COUNTY
U.S. PUBLIC LAND SURVEY MONUMENT RECORD**

INSTRUCTIONS: THIS RECORD SHALL SHOW THE LOCATION OF THE CORNER AND SHALL INCLUDE ALL OF THE FOLLOWING ELEMENTS (A THROUGH I).

(A) IDENTIFY THE CORNER AS REFERENCED TO THE U.S. PUBLIC LAND SURVEY SYSTEM

■ = CORNER MONUMENT RESTORED

WITNESSES TO CORNER LOCATION:

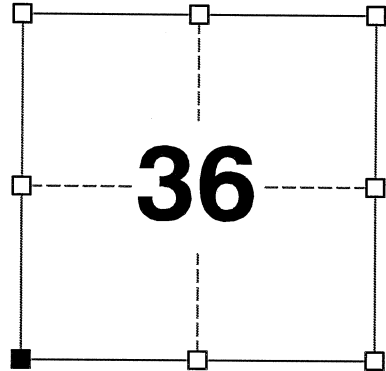
TODD C. PATTON
PAIGE O. JELINEK
TYLER D. ATKINSON

GEOGRAPHIC COORDINATES,
NAD 83 (2011) ADJUSTMENT:

LATITUDE: 42° 51' 22.66613"
LONGITUDE: 90° 26' 49.87558"

WISCONSIN COORDINATE REFERENCE SYSTEM (WISCRS),
GRANT COUNTY, NAD 83 (2011) ADJUSTMENT:

NORTHING: 526,873.019
EASTING: 889,608.188



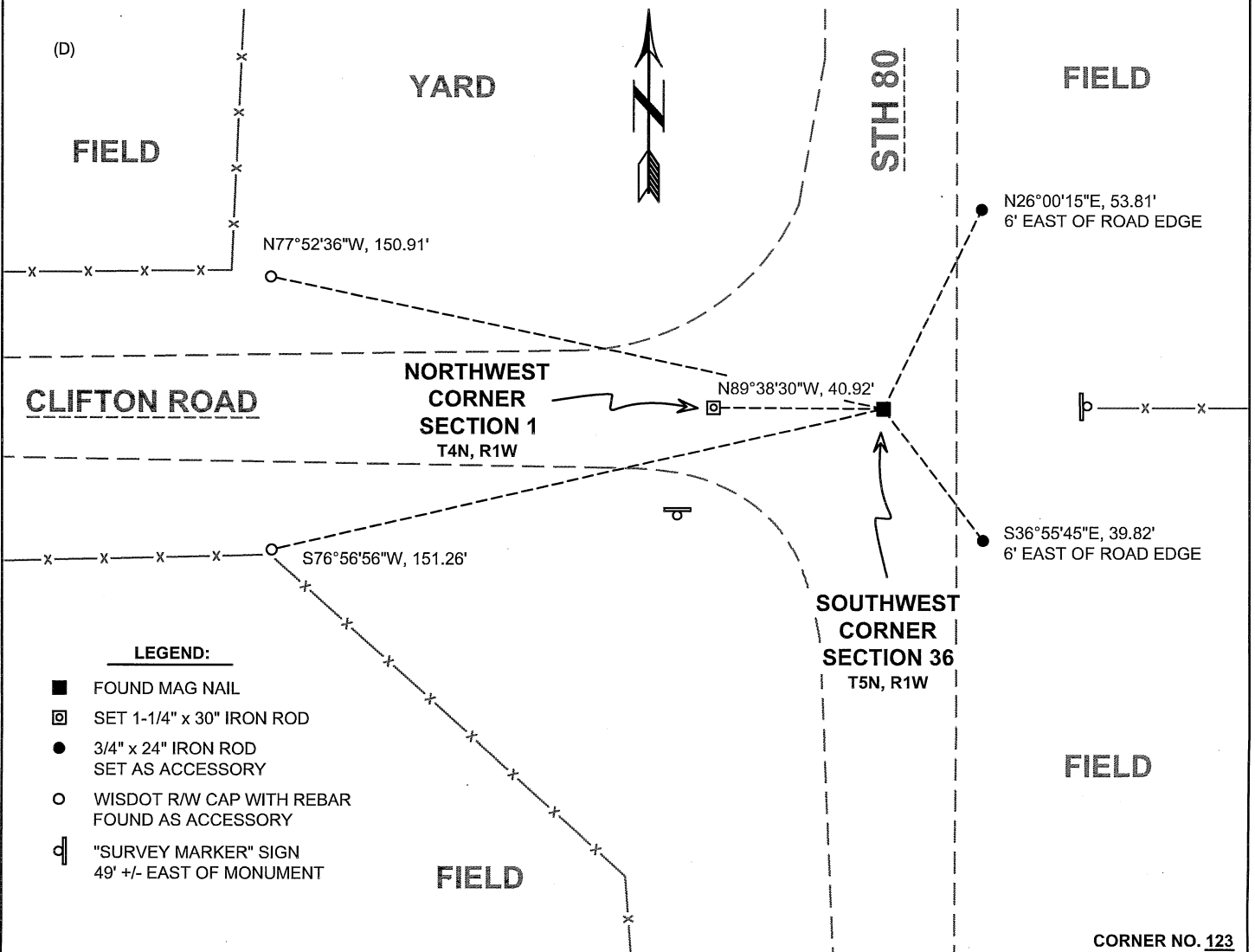
SECTION 36
TOWNSHIP 5 NORTH, RANGE 1 WEST
TOWN OF CLIFTON

(B) DESCRIBE ANY RECORD EVIDENCE, MONUMENT EVIDENCE, OCCUPATIONAL EVIDENCE, TESTIMONIAL EVIDENCE OR ANY OTHER MATERIAL EVIDENCE YOU CONSIDERED, AND WHETHER THE MONUMENT WAS FOUND OR PLACED.

I COULD FIND NO MONUMENTS OR BEARING TREES FROM THE ORIGINAL GOVERNMENT SURVEY. I RECOVERED THE MAG NAIL REPORTED BY ALT. I ACCEPTED THIS LOCATION AS THE BEST AVAILABLE EVIDENCE OF THE ORIGINAL GOVERNMENT CORNER AND LEFT THIS MONUMENT IN PLACE.

(C) IN THE PLAN VIEW DRAWING BELOW, PROVIDE REFERENCE TIES TO AT LEAST 4 WITNESS MONUMENTS. WITNESS MONUMENTS SHALL BE MADE OF CONCRETE, NATURAL STONE, IRON, BEARING TREES OR ANY OTHER EQUALLY DURABLE MATERIAL. DEPICT THE RELEVANT MONUMENTS AND REFERENCE TIES WITH SUFFICIENT DETAIL TO ENABLE ACCURATE RELOCATION OF THE CORNER IF THE CORNER MONUMENT IS DISTURBED.

(D)



LEGEND:

- FOUND MAG NAIL
- ▣ SET 1-1/4" x 30" IRON ROD
- 3/4" x 24" IRON ROD SET AS ACCESSORY
- WISDOT R/W CAP WITH REBAR FOUND AS ACCESSORY
- ⊓ "SURVEY MARKER" SIGN 49' +/- EAST OF MONUMENT

51123

(E) DESCRIBE ANY MATERIAL DISCREPANCY BETWEEN THE LOCATION OF THE CORNER AS RESTORED OR REESTABLISHED AND THE LOCATION OF THAT CORNER AS PREVIOUSLY RESTORED OR REESTABLISHED BY DISTANCE AND DIRECTION. SHOW THE DISCREPANCY ON THE PLAN VIEW DRAWING UNDER (D), ABOVE. SHOW THE DISTANCES BETWEEN THE CORNER AS PREVIOUSLY RESTORED OR REESTABLISHED AND (1) THE CORNER AS RESTORED OR REESTABLISHED, AND (2) TO AT LEAST 2 OF THE WITNESS MONUMENTS SHOWN ON THE DRAWING IN (D) ABOVE.

N/A

(F) WAS THE CORNER RESTORED THROUGH ACCEPTANCE OF (1) AN OBLITERATED EVIDENCE LOCATION, OR (2) A FOUND PERPETUATED LOCATION?

(2) A FOUND PERPETUATED LOCATION.

(G&H) WAS THE CORNER REESTABLISHED THROUGH LOST CORNER PROPORTIONATE METHODS? IF SO, SHOW THE METHOD, INCLUDING THE DIRECTIONS AND DISTANCES TO OTHER PUBLIC LAND SURVEY CORNERS USED AS EVIDENCE OR USED FOR PROPORTIONING IN DETERMINING THE CORNER LOCATION.

N/A

CORNER HISTORY

THE ORIGINAL GOVERNMENT CORNER WAS ESTABLISHED BY LUCIUS LYON IN THE SECOND QUARTER OF 1832.

IN A PLAT OF SURVEY DATED 28 AUGUST 2000, LARRY AUSTIN REPORTED SETTING A RAIL ROAD SPIKE AT THE CORNER.

IN A TIE SHEET DATED 21 SEPTEMBER 2004, LAURENCE SCHMIT REPORTED FINDING A RAILROAD SPIKE AT THE CORNER.

IN A TIE SHEET DATED 7 NOVEMBER 2012, ANTHONY ALT REPORTED SETTING A MAG NAIL AT THE CORNER.

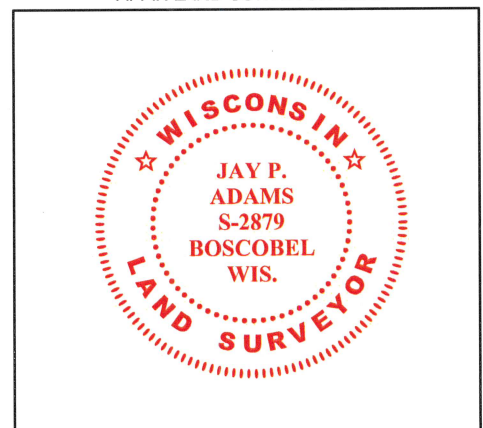
(I) I, JAY P. ADAMS, P.L.S. - 2879, CERTIFY THAT THE CORNER LOCATION SHOWN ON THIS RECORD WAS DETERMINED BY ME OR UNDER MY DIRECTION AND CONTROL AND THAT THIS U.S. PUBLIC LAND SURVEY MONUMENT RECORD IS CORRECT AND COMPLETE TO THE BEST OF MY KNOWLEDGE AND BELIEF.

SIGNATURE

28 OCTOBER 2022

DATE

AFFIX LAND SURVEYOR SEAL



U.S. PUBLIC LAND SURVEY MONUMENT RECORD

(a) Identify the corner to the U.S. Public Land Survey System.

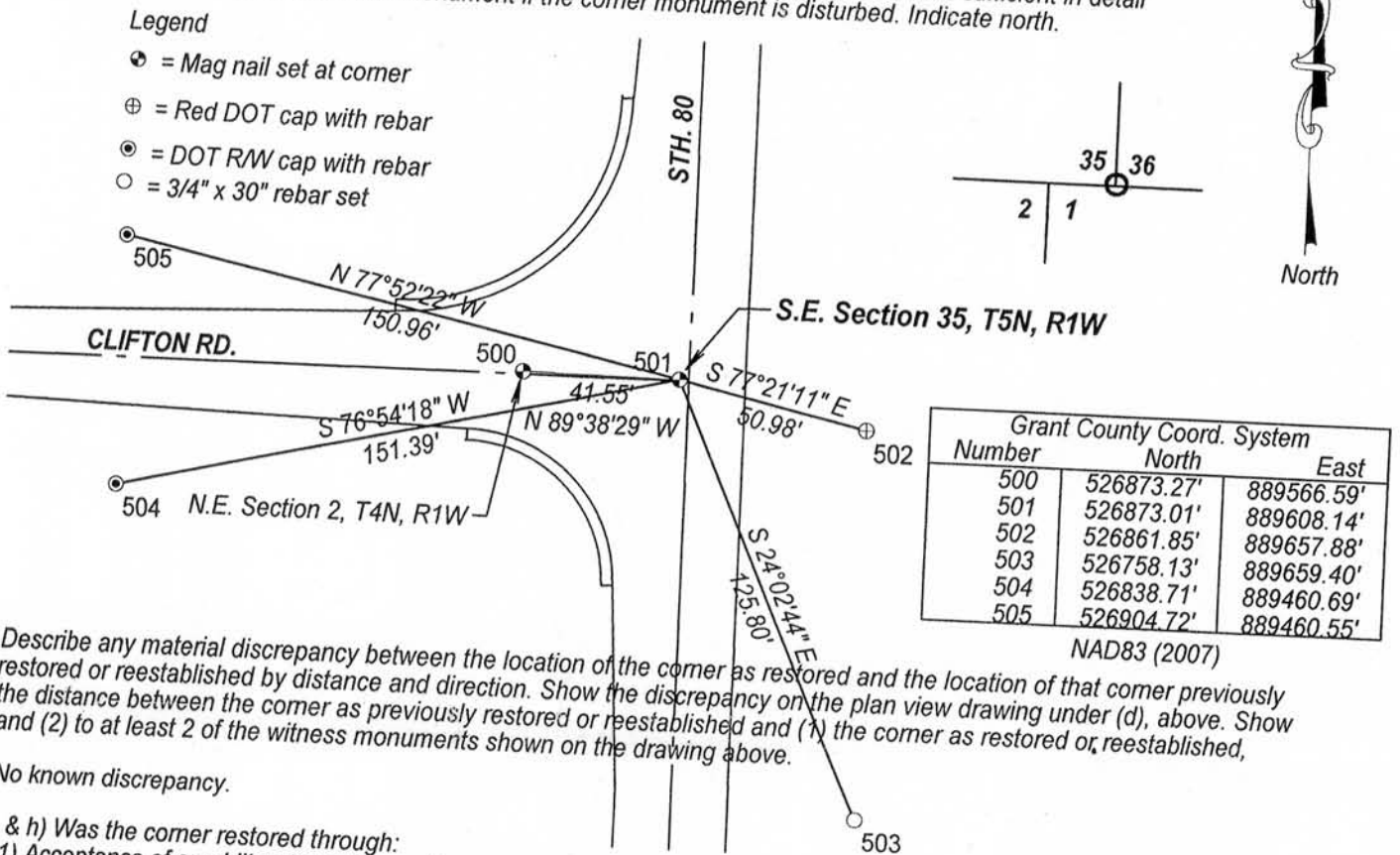
Southeast corner of Section 35, Town 5 North, Range 1 West, Clifton Township, Grant County, Wisconsin.

(b) Describe any record evidence, occupational evidence, testimonial evidence or any material evidence you considered, and if the monument was found or placed.

I found and accepted a railroad spike. The railroad spike was consistent with the location described in WIDOT Project Plat # 5035-00-21 and record ties. After road construction, I reestablished the corner as shown below.

(c) In the plan view below, provide reference ties to at least 4 witness monuments. (Witness monuments shall be made of concrete, material stone, iron or other durable material) Describe the witness monuments.

(d) Show a plan view drawing depicting the relevant monuments and reference ties which is sufficient in detail to enable accurate relocation of the monument if the corner monument is disturbed. Indicate north.



(e) Describe any material discrepancy between the location of the corner as restored and the location of that corner previously restored or reestablished by distance and direction. Show the discrepancy on the plan view drawing under (d), above. Show the distance between the corner as previously restored or reestablished and (1) the corner as restored or reestablished, and (2) to at least 2 of the witness monuments shown on the drawing above.

No known discrepancy.

(f, g & h) Was the corner restored through:

- (1) Acceptance of an obliterated evidence location, or
- (2) Acceptance of a found perpetuated location, or
- (3) Lost corner proportionate methods? If lost corner methods were used, show the method, including the direction and distance to other Public Land survey corners used as evidence or used for proportioning in determining the corner location.

(2) Acceptance of a found perpetuated location.

(i) I Anthony J. Alt, certify that the corner location shown on this record was determined by me or under my direction and control and that this U.S. Public Land Survey Monument is accurate and complete to the best of my knowledge and belief.



Signature Anthony J. Alt

Date 11-7-12

Affix Seal

NOV 21 2012

123

GRANT COUNTY CERTIFIED LAND CORNER

CORNER NUMBER 123

CERTIFICATE:

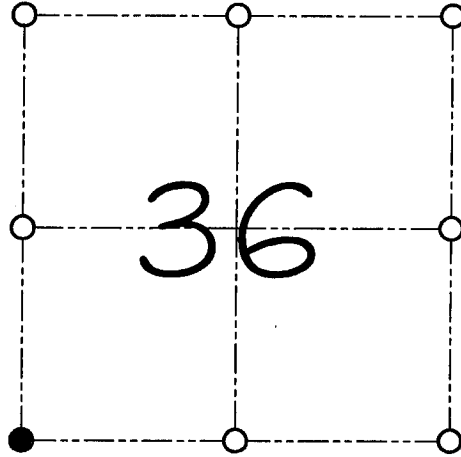
I, Larry L. Austin, do hereby certify that on the 24th day of August, 2000, I found evidence of the Southwest corner of Section 36, Town 5 North, Range 1 West, of the 4th Principal Meridian, and I re-established said corner according to the Wisconsin statutes as shown and described hereon.

Dated this 8th day of September, 2000.

Larry L. Austin
Larry L. Austin S-1903



SEAL



● = CORNER LOCATION

SOUTHWEST CORNER OF
SECTION 36, T 5 N R. 1 W
TOWN OF CLIFTON

HISTORY OF ORIGINAL CORNER ESTABLISHMENT:

Corner was originally set in 1832 by Sibley.
No other record of the corner was found.

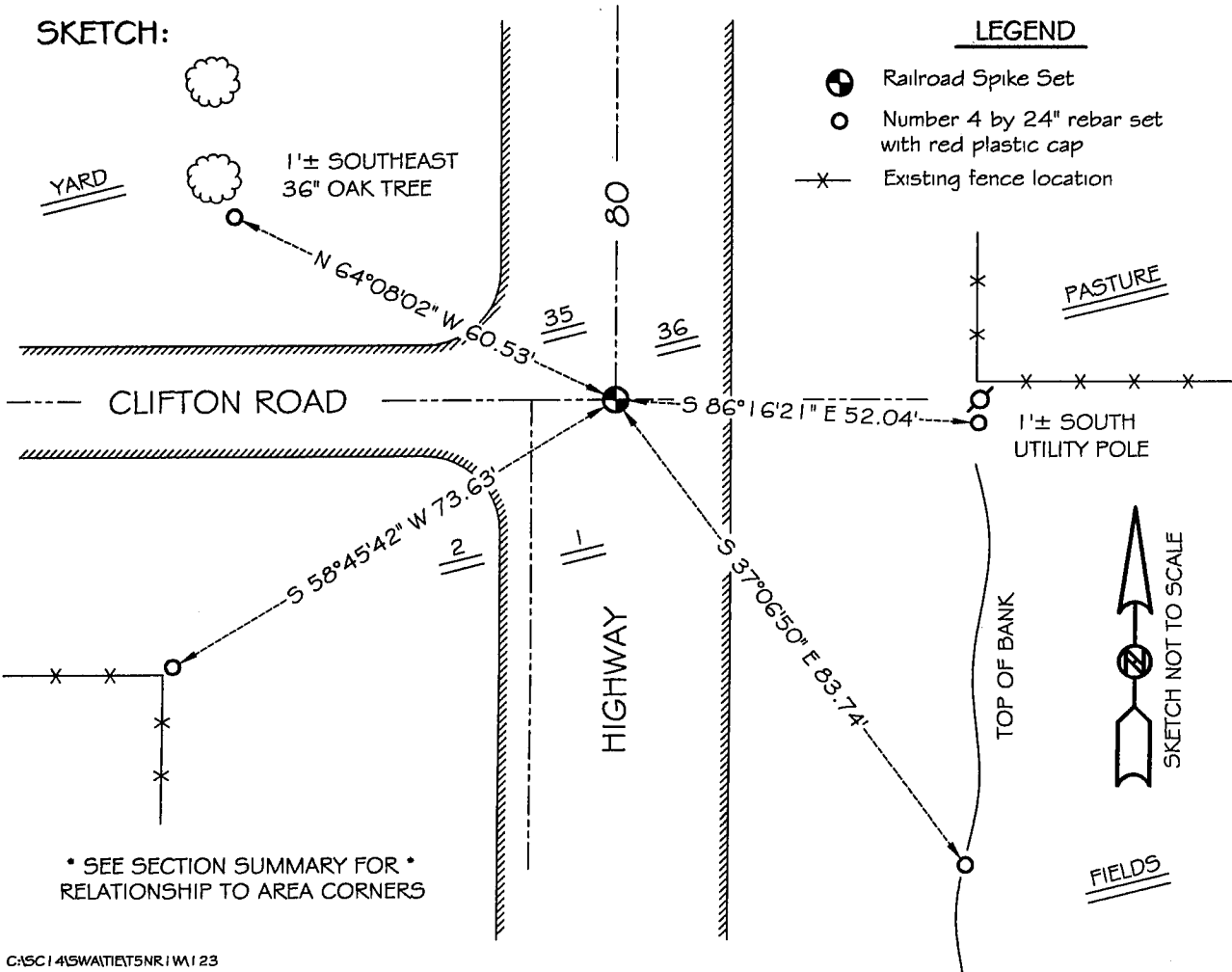
DESCRIPTION OF CORNER EVIDENCE FOUND:

I reset the corner at an occupied location.
I accepted it's location after an E.D.M. & G.P.S. traverse of the area.

DESCRIPTION OF CORNER AND WITNESS MONUMENTS, references and accessories used to perpetuate the original or re-established location of this corner

WITNESS TO THE CORNER LOCATION: SHANE AUSTIN & JERRY SPEILMAN

SKETCH:



LEGEND

- Railroad Spike Set
- Number 4 by 24" rebar set with red plastic cap
- x- Existing fence location

