

CORNER DESCRIPTION: N 1/4 CORNER, SECTION 31, T 5 N, R 1W

STATE PLANE COORDINATES: N _____, E _____

THETA ANGLE: _____

HORIZONTAL DATUM: WISCONSIN STATE PLANE COORDINATE SYSTEM, SOUTH ZONE

EVIDENCE: EXISTING OCCUPIED MONUMENT MEASURED WITH EDM TRAVELER

MONUMENT: FOUND , PLACED

METHOD OF RESTORATION (RE-ESTABLISHMENT):

ACCEPTED EXISTING MONUMENT

N , E ACCEPTED OCCUPATION

N , E LOST CORNER PROPORTIONATE METHODS

DATE CORNER SET: 3-17-89

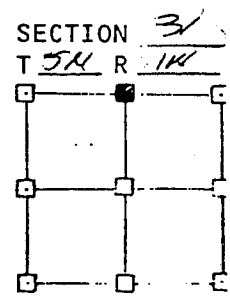
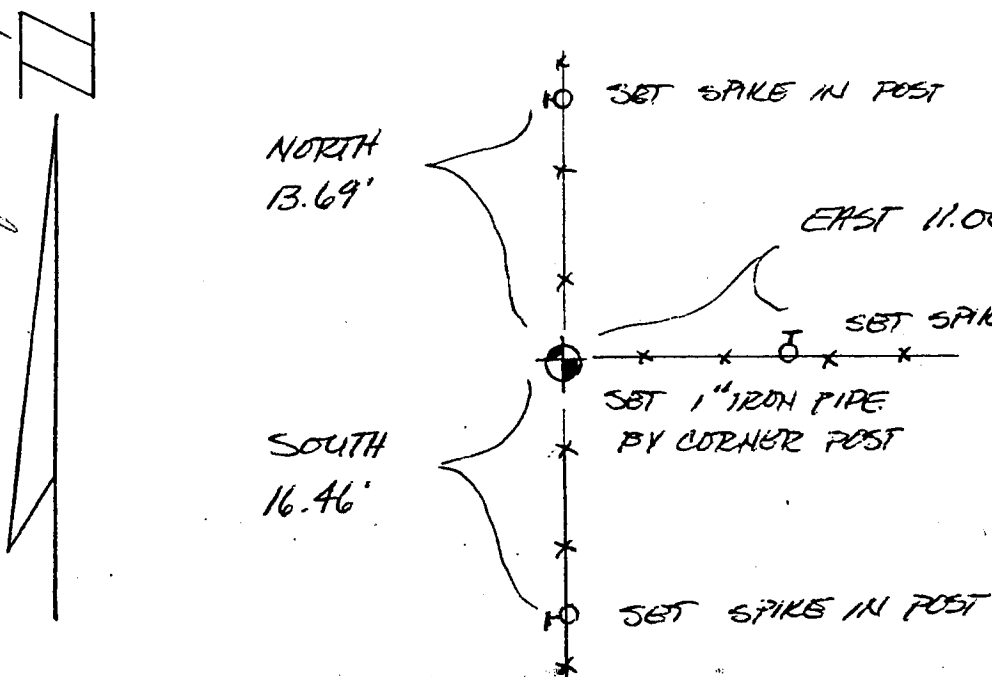
LEGEND

- ▲ SET #6, REBAR, 113 LBS PER LINEAL FT MIN WT
- SET 1" X 24" IRON PIPE, 113 LBS PER LINEAL FT MIN WT
- SET 2" X 30" IRON PIPE, 365 LBS PER LINEAL FT MIN WT
- FOUND 1" IRON PIPE
- FOUND 2" IRON PIPE
- FOUND R/R SPIKE
- FOUND R/R SPIKE
- SET R/R SPIKE
- GOVERNMENT CORNER
- EXISTING MONUMENT

GRANT COUNTY CLERK RECEIVED

JUL 26 1989

Clyden J. Simpson



NOT TO SCALE THIS CONFORMS TO WISCONSIN ADMINISTRATIVE CODE A-E 5.02

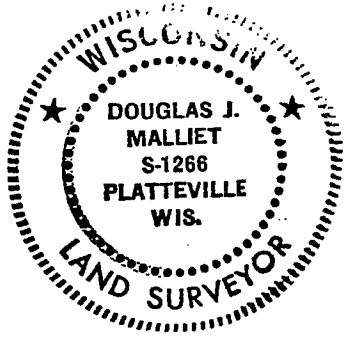
SURVEYOR'S AFFIDAVIT:

STATE OF WISCONSIN)
GRANT COUNTY) SS

I hereby certify that I, DOUGLAS J. MALLIET, have complied with the Wisconsin State Statutes, Statutes of the United States, and the rules and regulations made by the Secretary of the Interior in the location of the corner shown above.

DATE OF SURVEY: 3-17-89

Douglas J. Malliet
REGISTERED LAND SURVEYOR
1266



D. F. BURBACH MUNICIPAL & CIVIL ENGINEERS

410 NORTH SECOND STREET • PLATTEVILLE, WISCONSIN 53818 • (608) 348-3262

