

U.S. PUBLIC LAND SURVEY MONUMENT RECORD

(AS REQUIRED BY § A-E 7.08, WI. ADM. CODE)

HISTORY OF ORIGINAL CORNER ESTABLISHMENT AND SUBSEQUENT RESTORATIONS AND DESCRIPTION OF ANY RECORD, MONUMENT, OCCUPATION, TESTIMONIAL OR OTHER EVIDENCE CONSIDERED

Doug Malliet set this corner in 1988 but was destroyed by road construction. Larry Austin reset the corner on 1/5/1994 with a 3/4" rebar. The corner has been damaged again by road construction. I replaced the bent rebar with a 3/4"x18" rebar

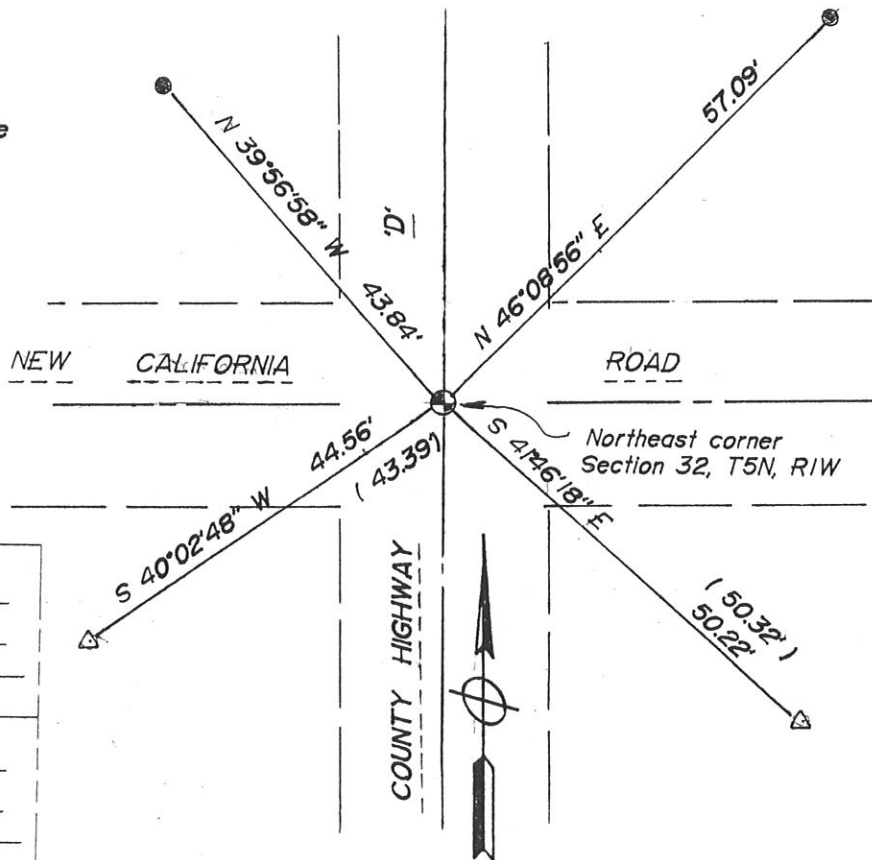
CORNER WAS: (CHECK ALL THAT APPLY)

- RESTORED THROUGH ACCEPTANCE OF AN OBLITERATED EVIDENCE LOCATION
- RESTORED THROUGH ACCEPTANCE OF A FOUND PERPETUATED LOCATION
- CONSIDERED A LOST CORNER AND REESTABLISHED THROUGH LOST CORNER PROPORTIONATE METHODS (INCLUDE A PLAN VIEW DRAWING SHOWING BEARING & DISTANCE TO OTHER PUBLIC LAND SURVEY CORNERS USED FOR PROPORTIONING AND DETERMINING THE CORNER LOCATION)
- RESTORED OR REESTABLISHED IN A LOCATION THAT DIFFERS FROM A PREVIOUS RESTORATION OR REESTABLISHMENT (INCLUDE A PLAN VIEW DRAWING AND INDICATE WHAT WAS SET AND/OR FOUND)

Describe the monument and accessories used to perpetuate the location of the corner. (include a plan view drawing and indicated what was set and/or found)

LEGEND

- Set 5/8"x18" rebar
- △ Reset 1-1/4" iron pipe
- () Recorded as
- ⊙ Set 3/4"x18" rebar



SECT <u>29</u>	SECT <u>28</u>
TOWN <u>5</u>	TOWN <u>5</u>
RANGE <u>1</u>	RANGE <u>1</u>
SECT <u>32</u>	SECT <u>33</u>
TOWN <u>5</u>	TOWN <u>5</u>
RANGE <u>1</u>	RANGE <u>1</u>

THE SE COR. OF SECT 29 T 5 , R 1
 THE SW COR. OF SECT 28 T 5 , R 1
 THE NE COR. OF SECT 32 T 5 , R 1
 THE NW COR. OF SECT 33 T 5 , R 1

SCALE 1" = 20'

BEARINGS ARE REFERENCED TO *Grant* COUNTY COORDINATE SYSTEM NAD83(2011)

GRANT COUNTY, WISCONSIN

JOB ID: _____

I, JOHN M. HALVERSON, CERTIFY THAT THE CORNER LOCATION SHOWN ON THIS RECORD WAS DETERMINED BY ME OR UNDER MY DIRECTION AND CONTROL AND THAT THIS U.S. PUBLIC LAND SURVEY MONUMENT RECORD IS CORRECT AND COMPLETE TO THE BEST OF MY KNOWLEDGE AND BELIEF.

John M. Halverson
 SIGNATURE

7/14/2025
 DATE:



LAND SURVEYORS SEAL

INDEX NUMBER 109

GRANT COUNTY

Survey Monument Record

TYPE OF MONUMENT 3/4" IRON BAR SET
 STATE PLANE COORDINATES: N _____
 E _____
 ELEVATION — M.S.L. DATUM: _____
 THETA ANGLE: _____
 FIELD BOOK: 9321
 PAGE _____

CORNER NO. 109
 SECTION 29
 TOWN 5N
 RANGE 1W



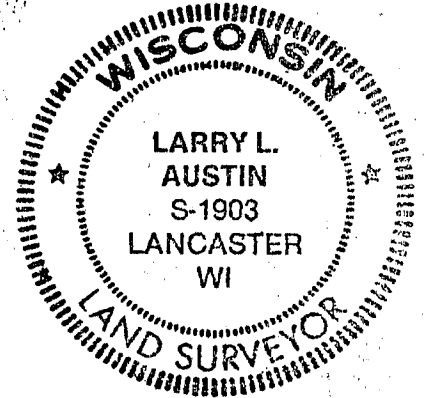
LOCATION
 (Indicated by "●")

BASIS FOR MONUMENT LOCATION

(Use reverse side if necessary)

Show info such as: History of corner, with reference to Vol. and pg., dates, surveyor; exact description of monument replaced; if location computed, by taped or EDM traverse; landowner, remarks, etc.

SEAL:



CORNER SET IN 1988 BY MALLIET; CORNER WAS REMOVED BY CO. HWY CONST. IN 1993; REPLACED CORNER BY TRAVERSING IN FROM FOUND MONUMENTS OF 1988 SURVEY BY MALLIET. (PREVIOUS TIES ALSO LOST BY CO. HWY CONST.)

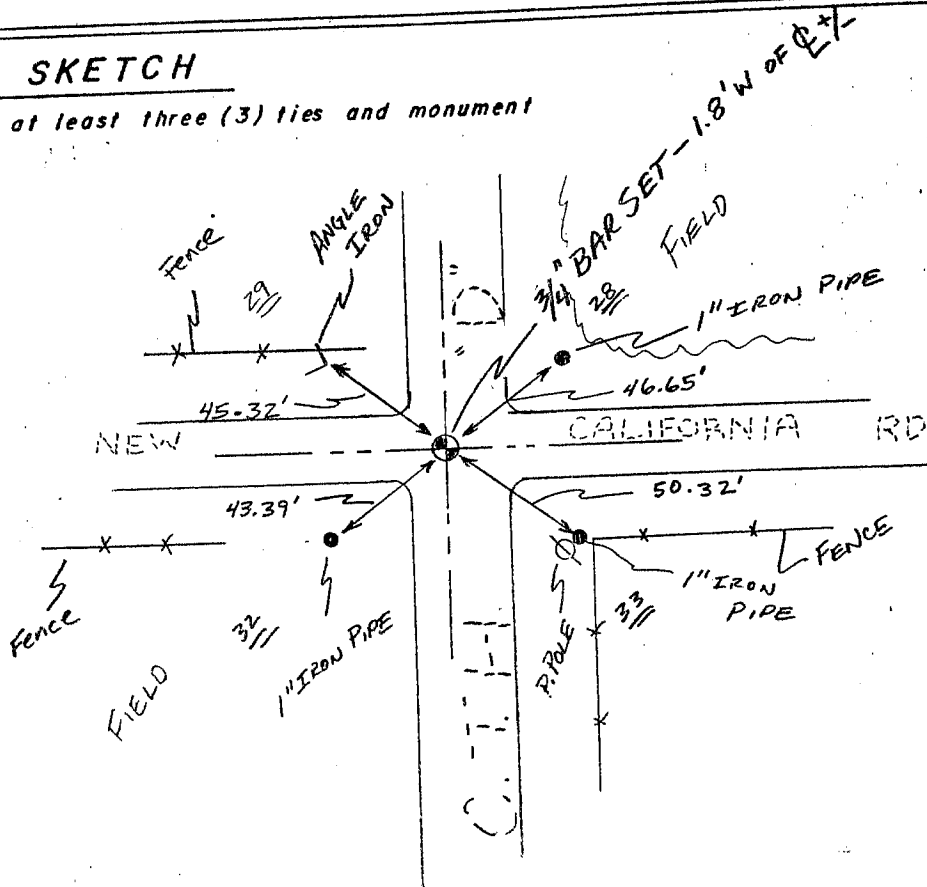
CERTIFIED CORRECT

Larry L. Austin
 Registered Land Surveyor

DATE: 1/5/94

TIE SKETCH

Show at least three (3) ties and monument



NO SCALE

Little Grant

CORNER DESCRIPTION: NE CORNER, SECTION 32, T 5 N, R 4 W

STATE PLANE COORDINATES: N _____, E _____

THETA ANGLE: _____

HORIZONTAL DATUM: WISCONSIN STATE PLANE COORDINATE SYSTEM, SOUTH ZONE

EVIDENCE: USED OCCUPIED LOCATION FROM EXISTING FENCE LINE

MONUMENT: FOUND , PLACED

METHOD OF RESTORATION (RE-ESTABLISHMENT):

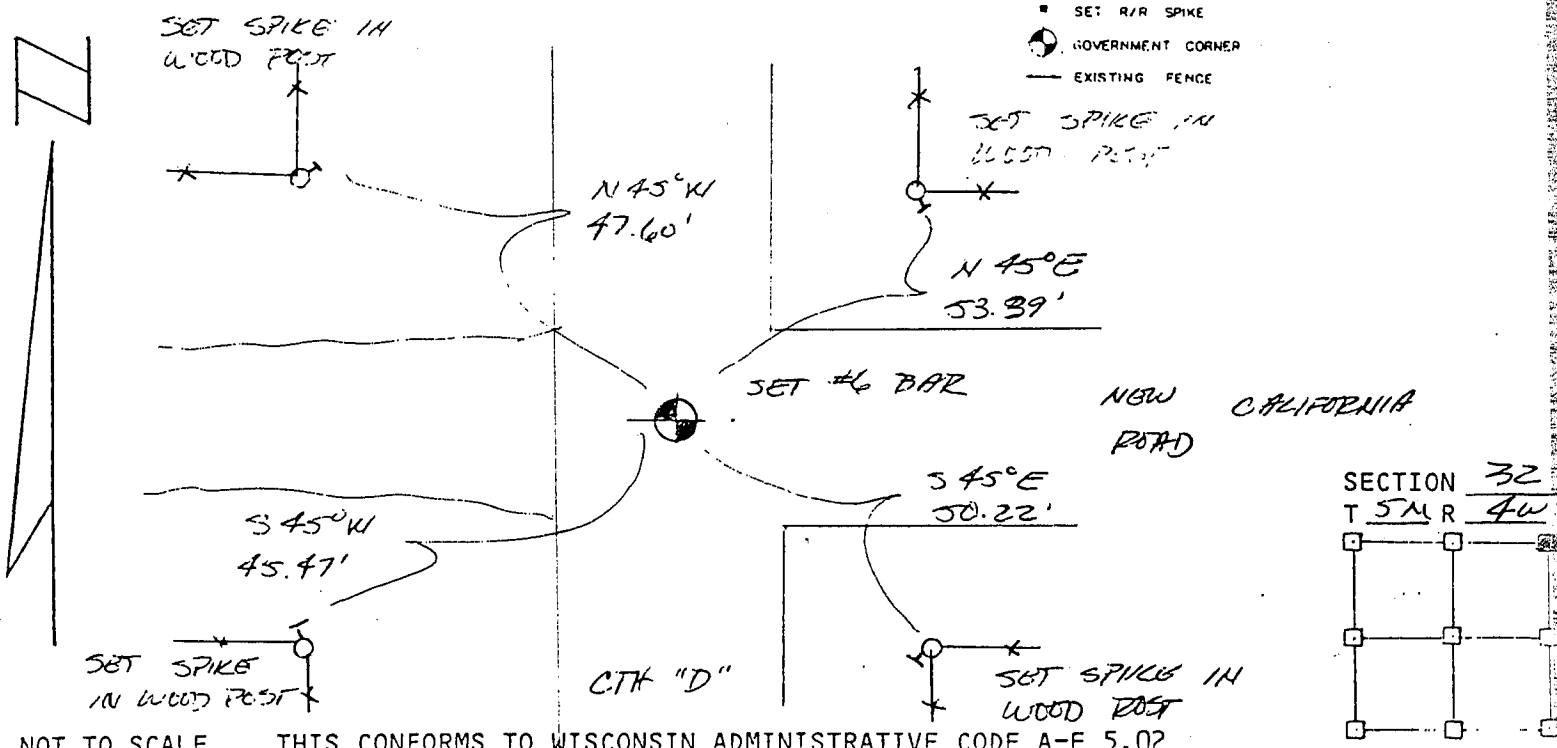
ACCEPTED EXISTING MONUMENT

N , E ACCEPTED OCCUPATION

N , E LOST CORNER PROPORTIONATE METHODS

DATE CORNER SET: 11.22.88

- LEGEND
- ▲ SET #6 REBAR, 113 LBS PER LINEAL FT MIN WT
 - SET 1" X 24" IRON PIPE, 113 LBS PER LINEAL FT MIN WT
 - SET 2" X 30" IRON PIPE, 365 LBS PER LINEAL FT MIN WT
 - FOUND 1" IRON PIPE
 - FOUND 2" IRON PIPE
 - FOUND R/R SPIKE
 - SET R/R SPIKE
 - GOVERNMENT CORNER
 - EXISTING FENCE



NOT TO SCALE THIS CONFORMS TO WISCONSIN ADMINISTRATIVE CODE A-E 5.02

SURVEYOR'S AFFIDAVIT:

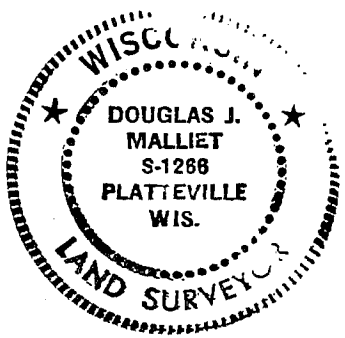
STATE OF WISCONSIN)

GRANT COUNTY) SS

I hereby certify that I, DOUGLAS J. MALLIET, have complied with the Wisconsin State Statutes, Statutes of the United States, and the rules and regulations made by the Secretary of the Interior in the location of the corner shown above.

DATE OF SURVEY: 12.8.88

Douglas J. Malliet
REGISTERED LAND SURVEYOR
12466



D. F. BURBACH MUNICIPAL & CIVIL ENGINEERS

410 NORTH SECOND STREET • PLATTEVILLE, WISCONSIN 53818 • (608) 348-3262

0109