

U.S. PUBLIC LAND SURVEY MONUMENT RECORD - GRANT COUNTY, WI

Section 25, Town 5 North Range 1 West, Town of Clifton (a)

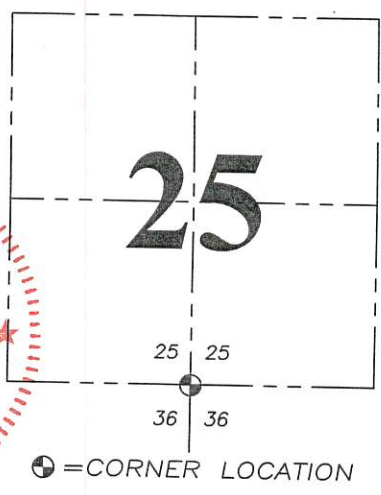
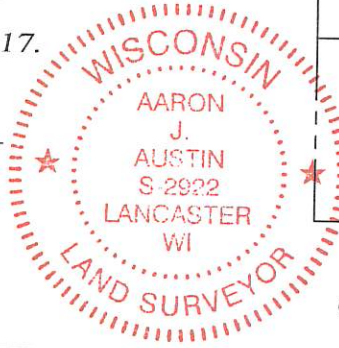
NOTE: This form is intended and designed to fulfill all requirements of the Wisconsin Administrative Code Chapter A-E 7.08, U.S. Public Land Survey Monument Record (3) (a) (b) (c) (d) (e) (f) (g) (h) (i).

CERTIFICATE: (i)

I, Aaron J. Austin, Wisconsin Professional Land Surveyor, do hereby certify that the corner location on this record was determined by me and/or under my direct supervision and that this U.S. Public Land Survey Monument Record is correct and complete to the best of my knowledge and belief.

Dated this 28th day of December, 2017.

Aaron J. Austin
Aaron J. Austin, S-2922



HISTORY OF CORNER ESTABLISHMENT:

Bruce Bowden found and accepted a 3/4" rebar at the corner and prepared a Survey Monument Record dated 4-24-1985.

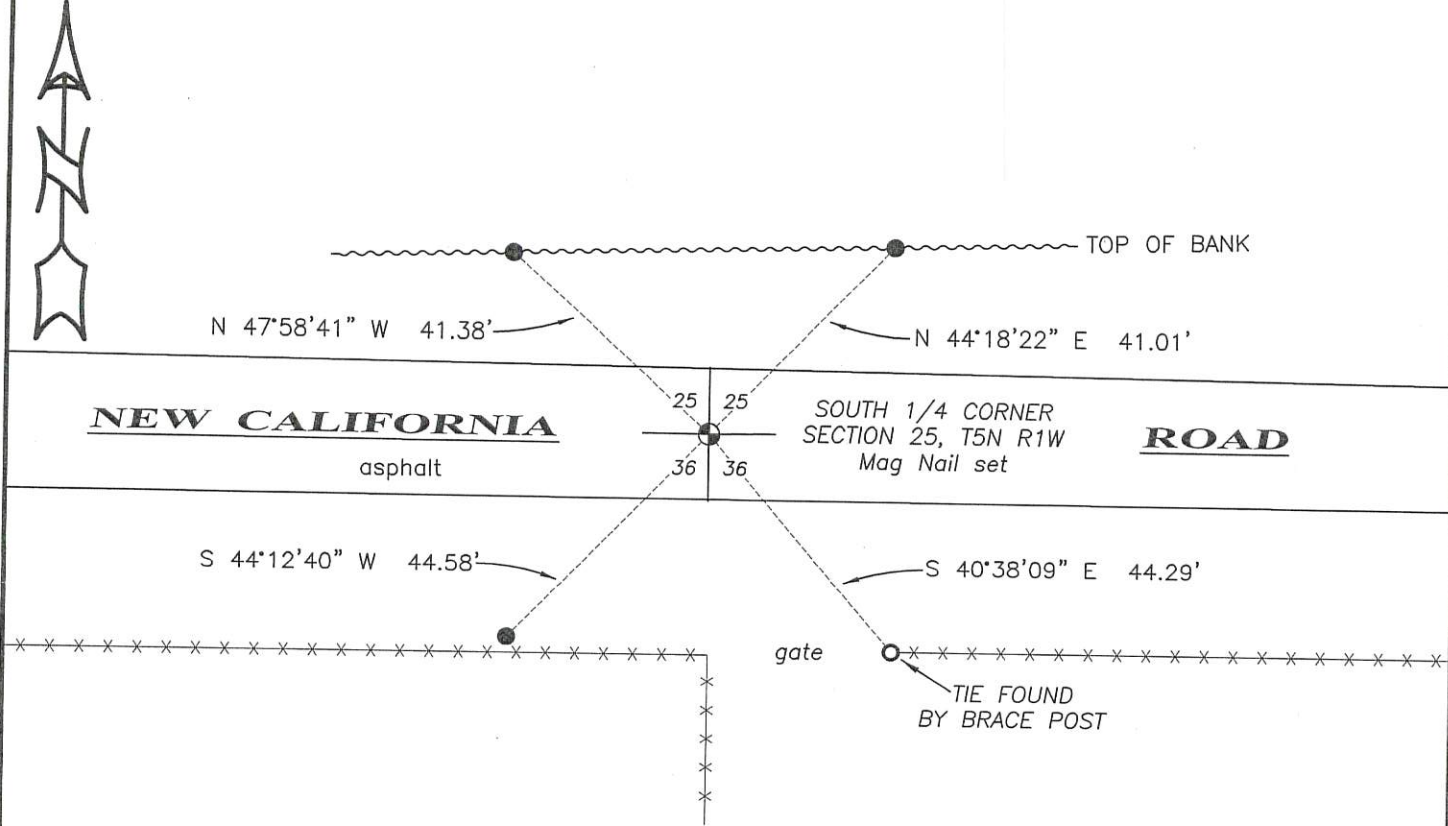
DESCRIPTION OF CORNER EVIDENCE FOUND: (b) (f) (g) (h)

I retraced the location based upon measurements to area section corners and a Section Summary by Larry Austin dated 5-6-2005. This location fits well with a faint metal detector reading under the asphalt and one witness corner found, as set by Bowden. I set three new witness corners after I verified it's location. Corner location was verified with G.P.S. and E.D.M. methods.

DESCRIPTION OF CORNER AND WITNESS MONUMENTS, references and accessories used to perpetuate the original or re-established location of this corner. (c) (d) (e)

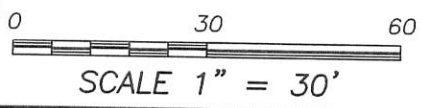
Witnesses to corner location Shane Austin, Owen Austin.

SKETCH:



LEGEND

- ⊕ Section Corner—as designated
- 1" Conduit pipe found
- 3/4" x 18" rebar set
- ~~~~~ Top of Bank
- x-x- Existing fence

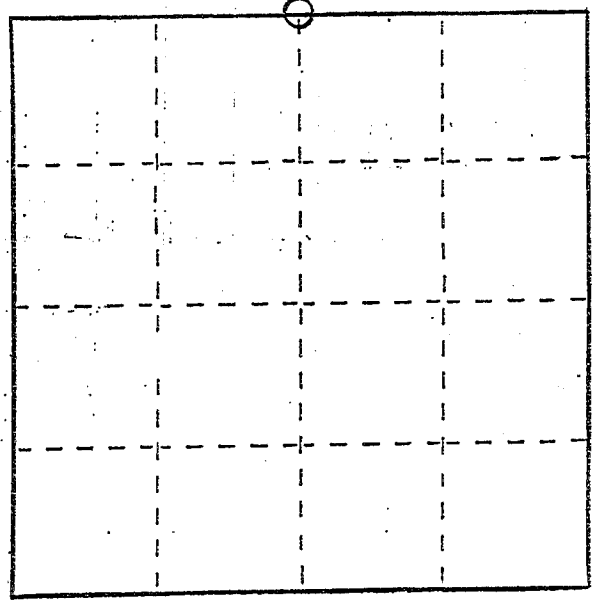


Sec. 36, T5N, R1W

U. S. PUBLIC LAND SURVEY MONUMENT RECORD

INSTRUCTIONS: This record shall show the location of the corner and shall include all of the following nine elements (a through i).

- (a) Identify the corner by reference to the U.S. public land survey system.
- = Corner monument restored.



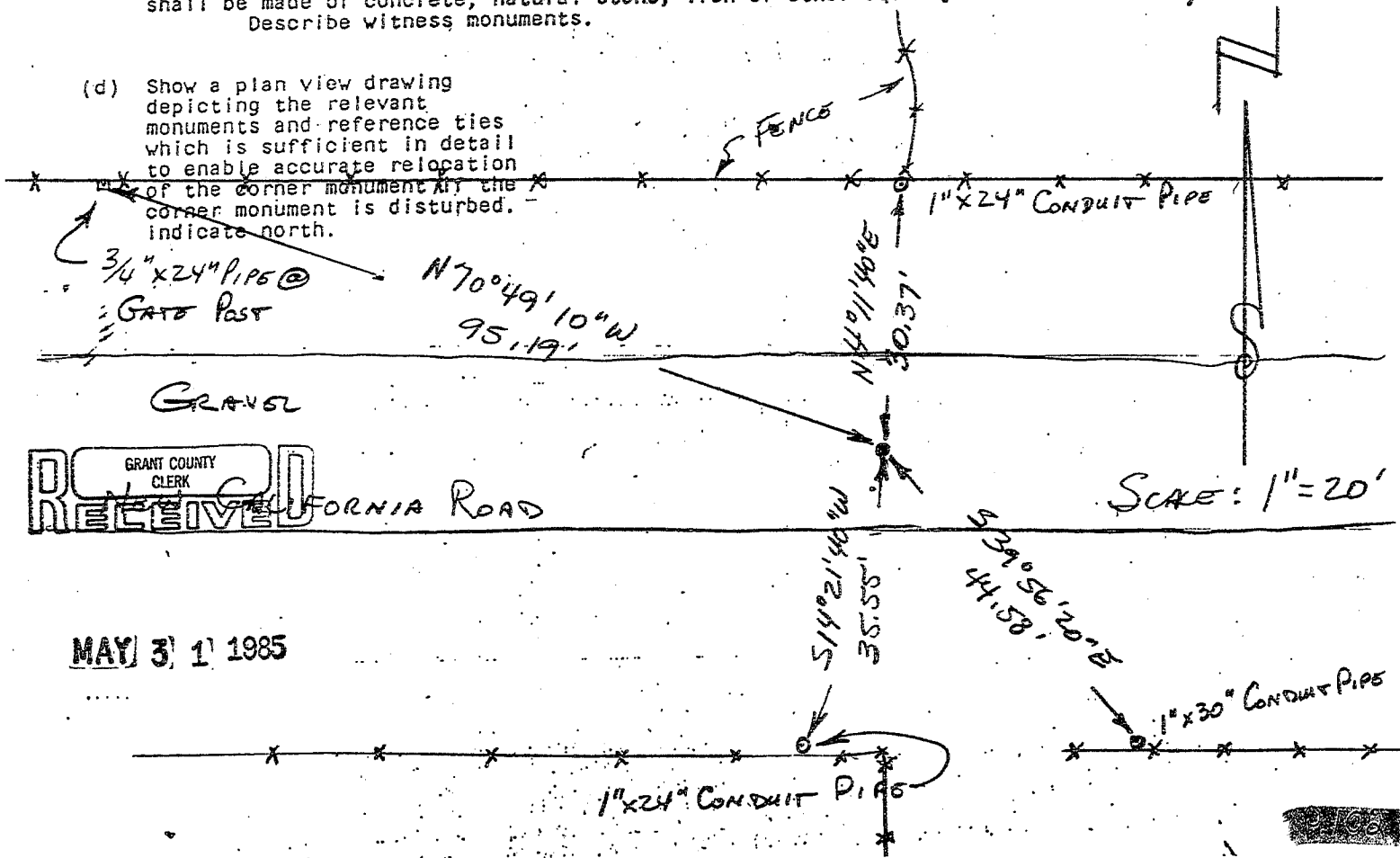
NORTHEAST CORNER OF THE
 NORTHWEST 1/4 OF SECTION
 36, TOWN 5 NORTH, RANGE
 1 WEST, CLIFTON TOWNSHIP,
 GRANT COUNTY, W. V.

- (b) Describe any record evidence, monument evidence, occupational evidence, testimonial evidence or any other material evidence you considered, and whether the monument was found or placed.

ACCEPTED 3/4" REBAR AS FOUND IN PLACE.

- (c) In the plan view drawing below, provide reference ties to at least 4 witness monuments, or, if the location is within a municipality, to at least 2 witness monuments. (Witness monuments shall be made of concrete, natural stone, iron or other equally durable material.) Describe witness monuments.

- (d) Show a plan view drawing depicting the relevant monuments and reference ties which is sufficient in detail to enable accurate relocation of the corner monument if the corner monument is disturbed. Indicate north.



GRANT COUNTY CLERK
 RECEIVED

CALIFORNIA ROAD

MAY 31 1985

SCALE: 1" = 20'



(e) Describe any material discrepancy between the location of the corner as restored or reestablished and the location of that corner as previously restored or reestablished by distance and direction. Show the discrepancy on the plan view drawing under (d), above. Show the distances between the corner as previously restored or reestablished and (1) the corner as restored or reestablished, and (2) to at least 2 of the witness monuments shown on the drawing in (d), above.

NONE

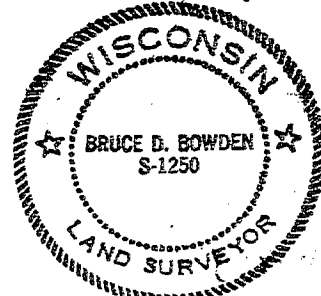
(f) Was the corner restored through acceptance of (1) an obliterated evidence location, or, (2) a found perpetuated location?

(2) A FOUND PERPETUATED LOCATION.

(g&h) Was the corner reestablished through lost corner proportionate methods? If so, show the method, including the directions and distances to other public land survey corners used as evidence or used for proportioning in determining the corner location?

No.

Affix Land Surveyor Seal



(i) I, Bruce D. Bowden
(type or print name) certify that the corner location shown on this record was determined by me or under my direction and control and that this U.S. Public Land Survey Monument Record is correct and complete to the best of my knowledge and belief.

Bruce D. Bowden
Signature

APRIL 24, 1985
Date