

# U.S. PUBLIC LAND SURVEY MONUMENT RECORD

(AS REQUIRED BY s.A-E 7.08, WI. ADM. CODE)

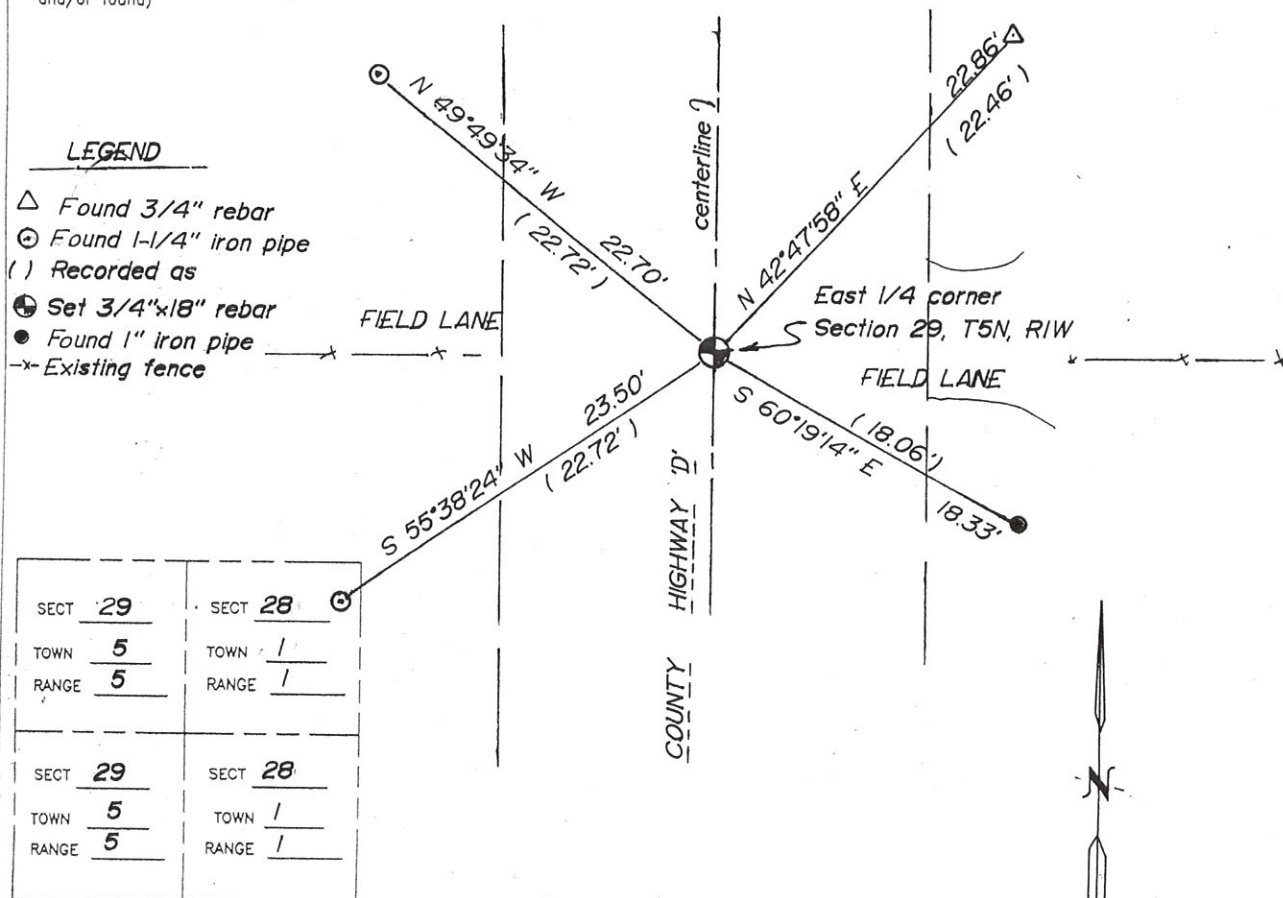
HISTORY OF ORIGINAL CORNER ESTABLISHMENT AND SUBSEQUENT RESTORATIONS AND DESCRIPTION OF ANY RECORD, MONUMENT, OCCUPATION, TESTIMONIAL OR OTHER EVIDENCE CONSIDERED

*I previously found a railroad spike that Larry Austin set and tied on 1/5/1994. Due to road construction, the railroad spike was recently removed. I set a 3/4"x18" rebar at previous location.*

CORNER WAS: (CHECK ALL THAT APPLY)

- RESTORED THROUGH ACCEPTANCE OF AN OBLITERATED EVIDENCE LOCATION
- RESTORED THROUGH ACCEPTANCE OF A FOUND PERPETUATED LOCATION
- CONSIDERED A LOST CORNER AND REESTABLISHED THROUGH LOST CORNER PROPORTIONATE METHODS (INCLUDE A PLAN VIEW DRAWING SHOWING BEARING & DISTANCE TO OTHER PUBLIC LAND SURVEY CORNERS USED FOR PROPORTIONING AND DETERMINING THE CORNER LOCATION)
- RESTORED OR REESTABLISHED IN A LOCATION THAT DIFFERS FROM A PREVIOUS RESTORATION OR REESTABLISHMENT (INCLUDE A PLAN VIEW DRAWING AND INDICATE WHAT WAS SET AND/OR FOUND)

Describe the monument and accessories used to perpetuate the location of the corner. (include a plan view drawing and indicated what was set and/or found)



THE E 1/4 COR. OF SECT 29 T 5 , R 1  
 THE W 1/4 COR. OF SECT 28 T 5 , R 1  
 THE \_\_\_\_\_ COR. OF SECT \_\_\_\_\_ T \_\_\_\_\_ , R \_\_\_\_\_  
 THE \_\_\_\_\_ COR. OF SECT \_\_\_\_\_ T \_\_\_\_\_ , R \_\_\_\_\_

BEARINGS ARE REFERENCED TO Grant COUNTY COORDINATE SYSTEM NAD83(2011)

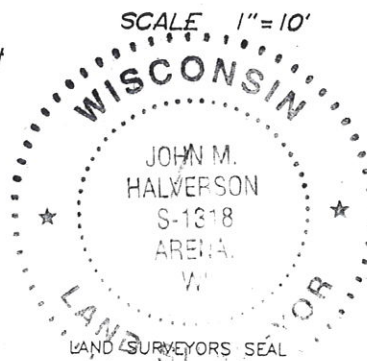
GRANT COUNTY, WISCONSIN

JOB ID: \_\_\_\_\_

I, JOHN M. HALVERSON, CERTIFY THAT THE CORNER LOCATION SHOWN ON THIS RECORD WAS DETERMINED BY ME OR UNDER MY DIRECTION AND CONTROL AND THAT THIS U.S. PUBLIC LAND SURVEY MONUMENT RECORD IS CORRECT AND COMPLETE TO THE BEST OF MY KNOWLEDGE AND BELIEF.

*John M. Halverson*  
 SIGNATURE

7/14/2025  
 DATE:



INDEX NUMBER 96

# GRANT COUNTY

## Survey Monument Record

TYPE OF MONUMENT RAIL ROAD SPIKE  
 STATE PLANE COORDINATES: N \_\_\_\_\_  
 E \_\_\_\_\_  
 ELEVATION — M.S.L. DATUM: \_\_\_\_\_  
 THETA ANGLE: \_\_\_\_\_  
 FIELD BOOK: 9321  
 PAGE \_\_\_\_\_

CORNER NO. 96  
 SECTION 29  
 TOWN 5N  
 RANGE 1W



LOCATION  
(Indicated by "•")



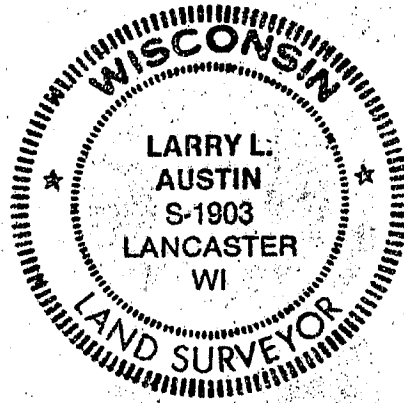
### BASIS FOR MONUMENT LOCATION

(Use reverse side if necessary)

Show info such as: History of corner, with reference to Vol. and pg., dates, surveyor; exact description of monument replaced; if location computed, by taped or EDM traverse; landowner, remarks, etc.

SEAL:

NO RECORD FOUND OF COR. SINCE  
ORIG. SURVEYS, CORNER WAS SET  
AT EXTENSION OF FENCE FROM EAST  
& C. OF C.T.H. "D"; VERIFIED BY  
EDM TRAVERSE OF THE AREA



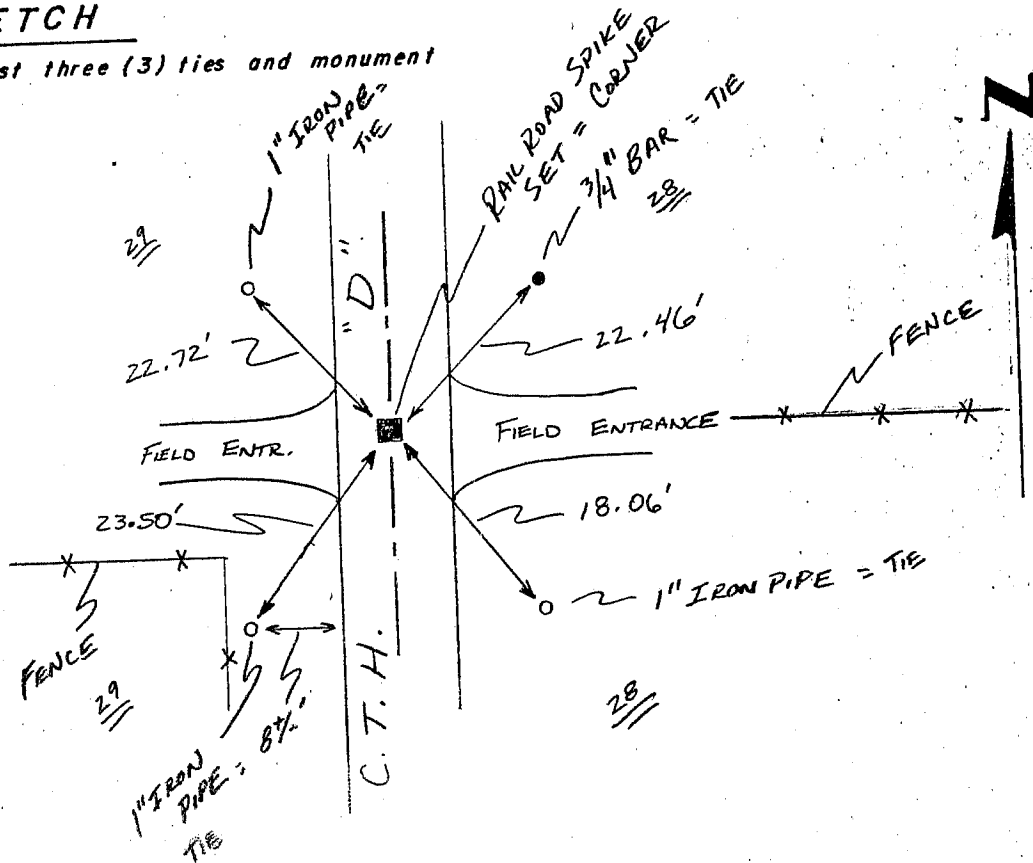
CERTIFIED CORRECT

Larry L. Austin  
 Registered Land Surveyor

DATE: 1/5/94

### TIE SKETCH

Show at least three (3) ties and monument



No SCALE