

U.S. PUBLIC LAND SURVEY MONUMENT RECORD

(AS REQUIRED BY s.A-E 7.08, WI. ADM. CODE)

HISTORY OF ORIGINAL CORNER ESTABLISHMENT AND SUBSEQUENT RESTORATIONS AND DESCRIPTION OF ANY RECORD, MONUMENT, OCCUPATION, TESTIMONIAL OR OTHER EVIDENCE CONSIDERED

I FOUND A RAILROAD SPIKE SHANK WITH NO HEAD FROM TIE SHEET DATED 1/5/1994 BY AUSTIN.
 2 OF THE TIES FROM AUSTIN HAVE BEEN LOST. 2 EXISTING TIES HAVE BEEN FOUND.
 2 NEW TIES HAVE BEEN SET AS MAPPED BELOW.

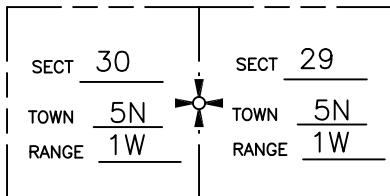
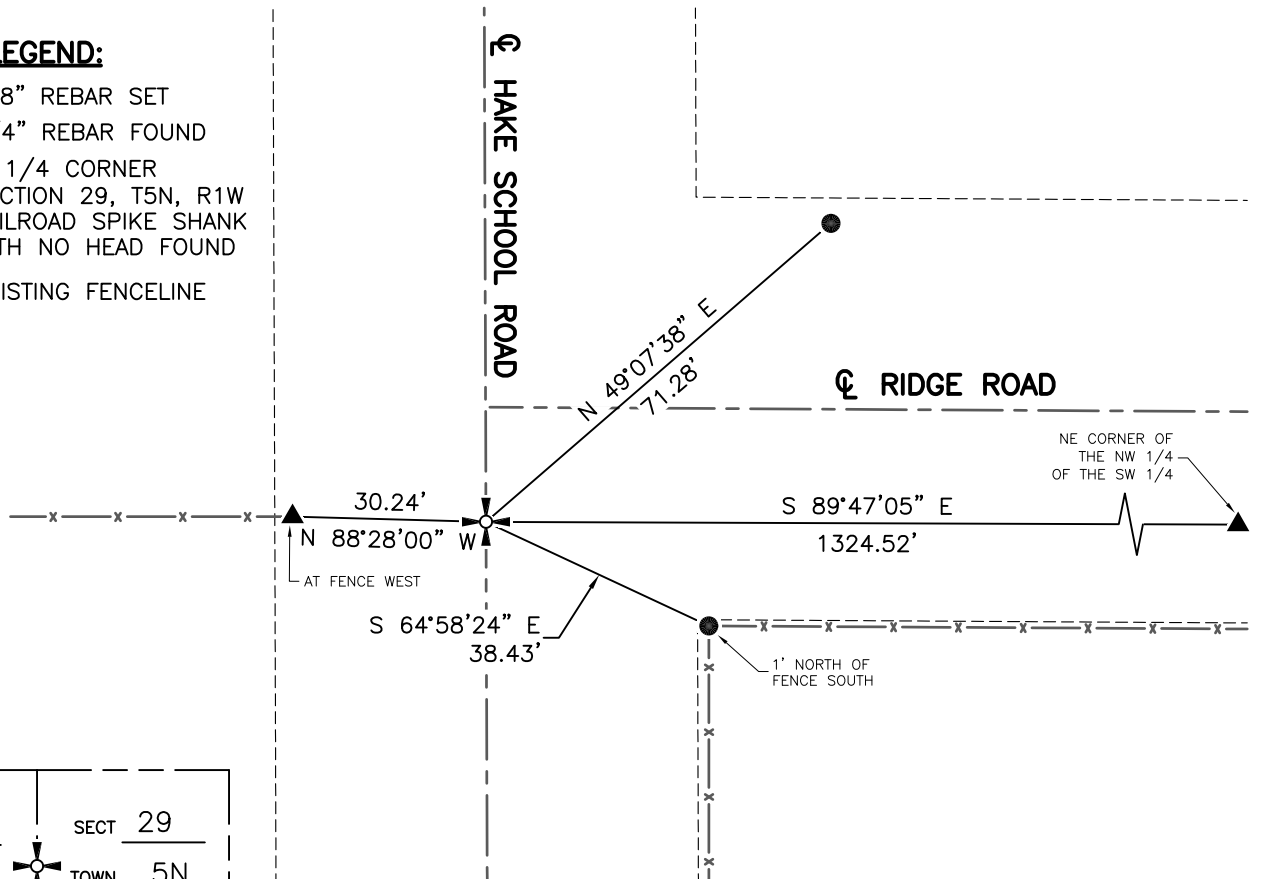
CORNER WAS: (CHECK ALL THAT APPLY)

- RESTORED THROUGH ACCEPTANCE OF AN OBLITERATED EVIDENCE LOCATION
- RESTORED THROUGH ACCEPTANCE OF A FOUND PERPETUATED LOCATION
- CONSIDERED A LOST CORNER AND REESTABLISHED THROUGH LOST CORNER PROPORTIONATE METHODS (INCLUDE A PLAN VIEW DRAWING SHOWING BEARING & DISTANCE TO OTHER PUBLIC LAND SURVEY CORNERS USED FOR PROPORTIONING AND DETERMINING THE CORNER LOCATION)
- RESTORED OR REESTABLISHED IN A LOCATION THAT DIFFERS FROM A PREVIOUS RESTORATION OR REESTABLISHMENT (INCLUDE A PLAN VIEW DRAWING AND INDICATE WHAT WAS SET AND/OR FOUND)

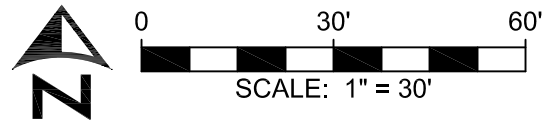
Describe the monument and accessories used to perpetuate the location of the corner. (include a plan view drawing and indicated what was set and/or found)

LEGEND:

- 5/8" REBAR SET
- ▲ 3/4" REBAR FOUND
- ⊕ W 1/4 CORNER
- ⊕ RAILROAD SPIKE SHANK WITH NO HEAD FOUND
- x— EXISTING FENCELINE



THE W 1/4 COR. OF SECT 29 T 5N , R 1W
 THE E 1/4 COR. OF SECT 30 T 5N , R 1W



BEARINGS ARE REFERENCED TO GRANT COUNTY COORDINATE SYSTEM NAD83(2011)

GRANT COUNTY, WISCONSIN

JOB ID: 2005011B

I, MICHAEL G. ROCHON, CERTIFY THAT THE CORNER LOCATION SHOWN ON THIS RECORD WAS DETERMINED BY ME OR UNDER MY DIRECTION AND CONTROL AND THAT THIS U.S. PUBLIC LAND SURVEY MONUMENT RECORD IS CORRECT AND COMPLETE TO THE BEST OF MY KNOWLEDGE AND BELIEF.



LAND SURVEYORS SEAL

Michael G. Rochon

SIGNATURE

6/12/2020

DATE:

INDEX NUMBER

95

GRANT COUNTY

Survey Monument Record

CORNER NO. 95
 SECTION 29
 TOWN 5 N
 RANGE 1 W

TYPE OF MONUMENT RAIL ROAD SPIKE

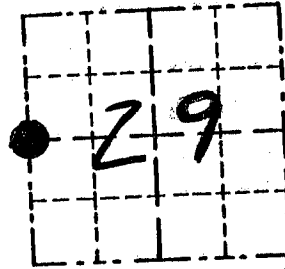
STATE PLANE COORDINATES: N _____
 E _____

ELEVATION — M.S.L. DATUM: _____

THETA ANGLE: _____

FIELD BOOK: 9321

PAGE _____



LOCATION
 (Indicated by "●")

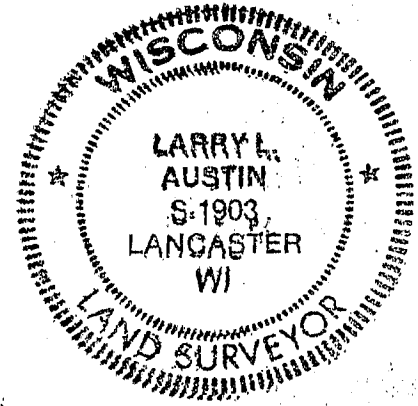
BASIS FOR MONUMENT LOCATION

(Use reverse side if necessary)

Show info such as: History of corner, with reference to Vol. and pg. dates, surveyor; exact description of monument replaced; if location computed, by taped or EDM traverse; landowner, remarks, etc.

SEAL:

NO RECORD FOUND OF CORNER
SINCE ORIG. SURVEYS; N-S
LOCATION BASED FENCE WEST
& E-W LOCATION BASED ON
Q OF TWP. ROAD; VERIFIED
BY EDM TRAVERSE OF THE
AREA.



CERTIFIED CORRECT

Larry L. Austin
 Registered Land Surveyor

DATE: 1/5/94

TIE SKETCH

Show at least three (3) ties and monument

LEGEND

- RAIL ROAD SPIKE SET = CORNER
- 3/4" IRON BAR = TIES
- ×× FENCE

