

# U.S. PUBLIC LAND SURVEY MONUMENT RECORD - GRANT COUNTY, WI

Section 25, Town 5 North Range 1 West, Town of Clifton (a)

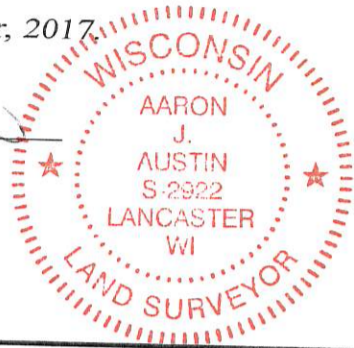
NOTE: This form is intended and designed to fulfill all requirements of the Wisconsin Administrative Code Chapter A-E 7.08, U.S. Public Land Survey Monument Record (3) (a) (b) (c) (d) (e) (f) (g) (h) (i).

**CERTIFICATE:** (i)

I, Aaron J. Austin, Wisconsin Professional Land Surveyor, do hereby certify that the corner location on this record was determined by me and/or under my direct supervision and that this U.S. Public Land Survey Monument Record is correct and complete to the best of my knowledge and belief.

Dated this 28th day of December, 2017.

*Aaron J. Austin*  
Aaron J. Austin, S-2922



⊙ = CORNER LOCATION

Grant County Coordinates:  
NAD 83 (2011)  
Northing: 537,513.65  
Easting: 889,551.43

**HISTORY OF CORNER ESTABLISHMENT:**

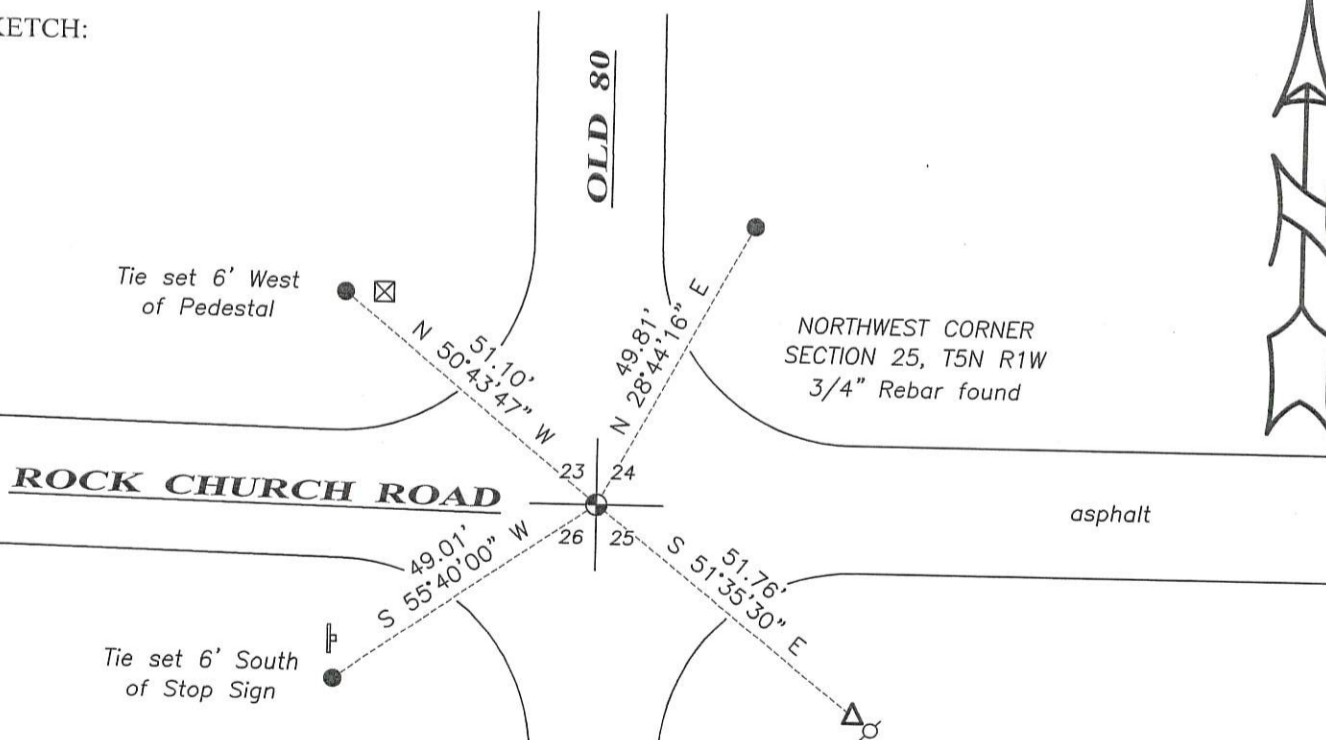
Larry Austin set a 3/4" rebar at the corner and prepared a Survey Monument Record dated 7-29-1994.

**DESCRIPTION OF CORNER EVIDENCE FOUND:** (b) (f) (g) (h)

I found the 3/4" rebar as set by Larry Austin and one witness corner. I set three additional witness corners after I verified the monument's location. Corner location was verified with G.P.S. and E.D.M. methods

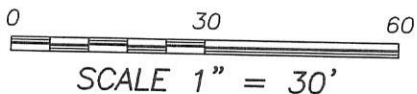
**DESCRIPTION OF CORNER AND WITNESS MONUMENTS:** references and accessories used to perpetuate the original or re-established location of this corner. (c) (d) (e)  
Witnesses to corner location Shane Austin, Owen Austin.

**SKETCH:**



**LEGEND**

- ⊙ Section Corner—as designated
- 3/4" x 18" rebar set
- △ 1" diameter iron pipe found
- ⊠ Existing Pedestal
- ⊙ Existing utility pole
- ⊥ Existing sign



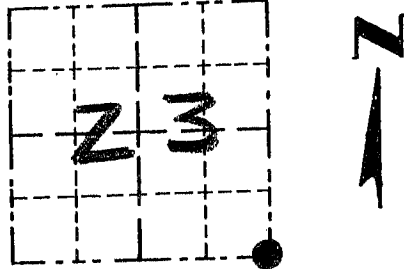
SCALE 1" = 30'

# GRANT COUNTY

## Survey Monument Record

TYPE OF MONUMENT 3/4" IRON BAR SET  
 STATE PLANE COORDINATES: N \_\_\_\_\_  
 E \_\_\_\_\_  
 ELEVATION — M.S.L. DATUM: \_\_\_\_\_  
 THETA ANGLE: \_\_\_\_\_  
 FIELD BOOK: 9411  
 PAGE 23

CORNER NO. 83  
 SECTION 23  
 TOWN 5 N  
 RANGE 1 W

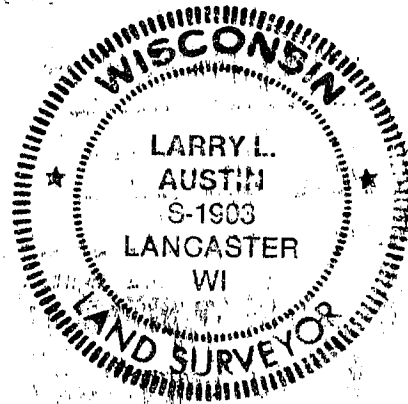


LOCATION  
 (Indicated by "•")

### BASIS FOR MONUMENT LOCATION

(Use reverse side if necessary)

Show info such as: History of corner, with reference to Vol. and pg., dates, surveyor; exact description of monument replaced; if location computed, by taped or EDM traverse; landowner, remarks, etc. **NO RECORD FOUND SINCE ORIGINAL SURVEYS; MONUMENT SET AT OCCUPIED & N-S & E-W; VERIFIED BY HWY PLANS & EDM TRAVERSE OF THE AREA.**



CERTIFIED CORRECT  
*Larry L. Austin*  
 Registered Land Surveyor  
 DATE: 7/29/94

### TIE SKETCH

Show at least three (3) ties and monument

