

GRANT COUNTY CERTIFIED LAND CORNER

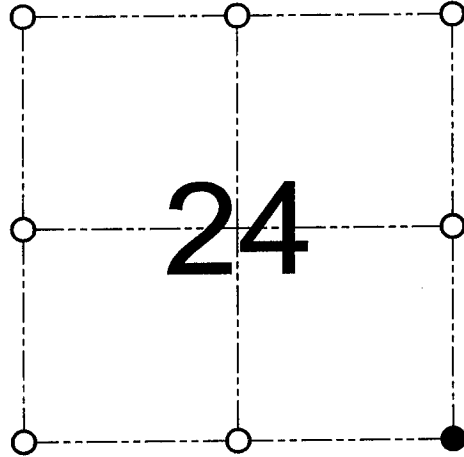
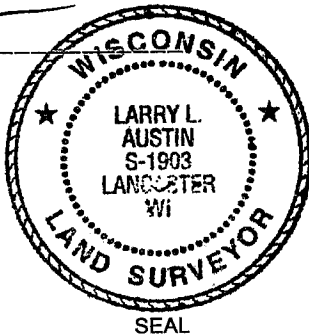
CORNER NUMBER 81

CERTIFICATE:

I, Larry L. Austin, do hereby certify that on the 3rd day of November, 2000, I found evidence of the Southeast corner of Section 24, Town 5 North, Range 1 West, of the 4th Principal Meridian, and I re-established said corner according to the Wisconsin statutes as shown and described hereon.

Dated this 19th day of December, 2000

Larry L. Austin
Larry L. Austin S-1903



● = CORNER LOCATION
SOUTHEAST CORNER OF SECTION 24, T 5 N R 1 W TOWN OF CLIFTON

HISTORY OF ORIGINAL CORNER ESTABLISHMENT:

Corner was originally set in 1832 by Sibley. In 1856 Overton tied to the original corner. No other record of the corner was found.

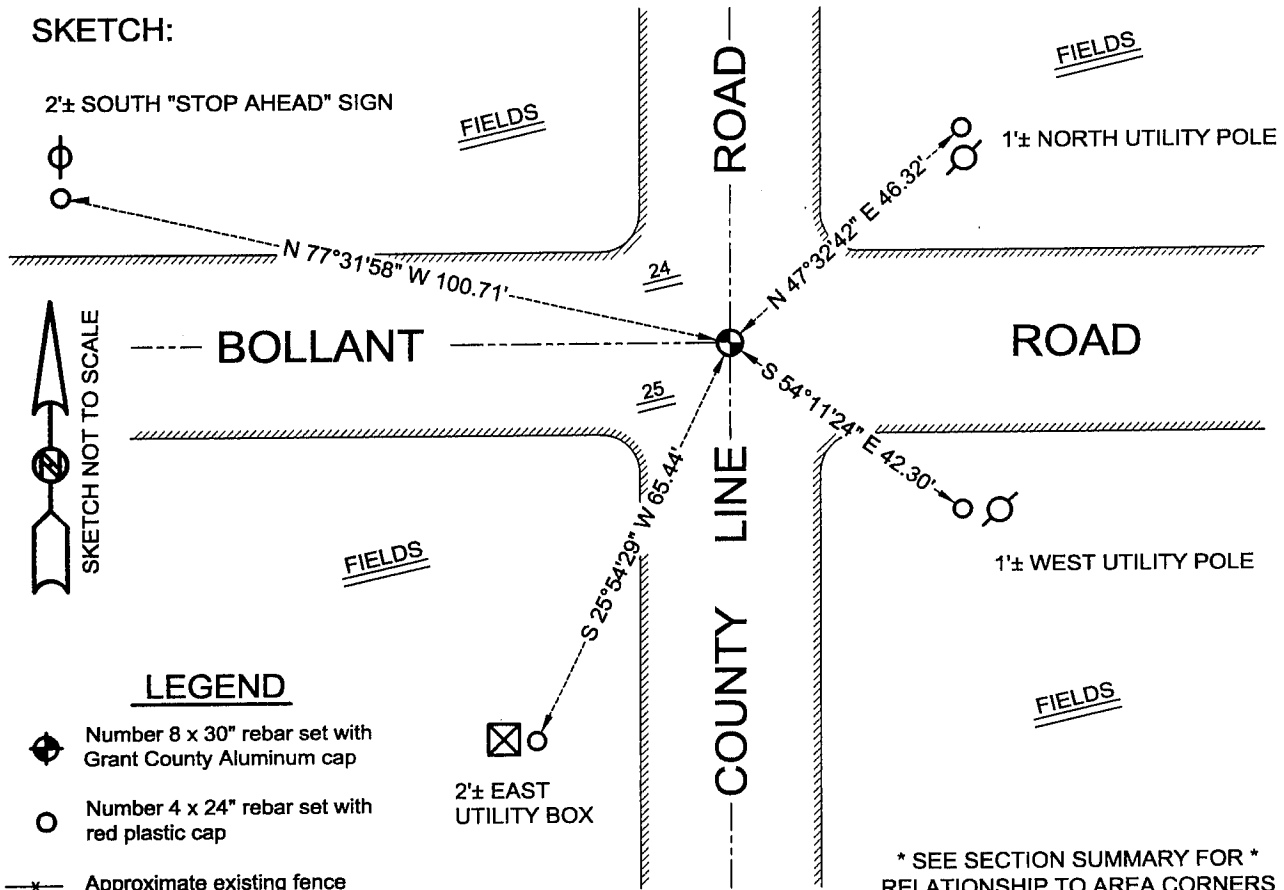
DESCRIPTION OF CORNER EVIDENCE FOUND:

I reset the corner based on occupational evidence. This location was verified by highway plans and measurements to adjoining corners.

DESCRIPTION OF CORNER AND WITNESS MONUMENTS, references and accessories used to perpetuate the original or re-established location of this corner

WITNESS TO THE CORNER LOCATION: TIM FAUVER & SHELBY BLINDERT & BOBBY SEDGWICK

SKETCH:



AUSTIN ENGINEERING, LLC
4211 HWY 81 E, LANCASTER, WI 53813
PHONE 608-723-6363 FAX 608-723-6702

FIELDBOOK: SDR33, 2033
G:\T5NR1W\36B
C:\SC14\SWA\TIE\T5NR1W\81

DRAWN BY: SW AUSTIN
APPROVED: LL AUSTIN
CREW: BS - SB - SA - TF