

GRANT COUNTY U.S. PUBLIC LAND SURVEY MONUMENT RECORD

(A) IDENTIFY THE CORNER AS REFERENCED TO THE U.S. PUBLIC LAND SURVEY SYSTEM

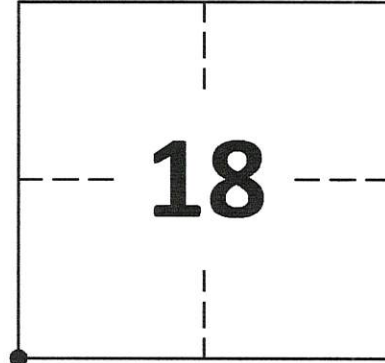
● = CORNER MONUMENT RESTORED

WITNESS TO CORNER LOCATION:
TRAVIS WARNER

GEOGRAPHIC COORDINATES
NAD 83 (2011) ADJUSTMENT

LATITUDE: 42°54'02.1183"
LONGITUDE: -90°32'46.9539"

WISCONSIN STATE PLANE SOUTH ZONE (US SF):
NORTHING: 328,717.536
EASTING: 1,822,102.144



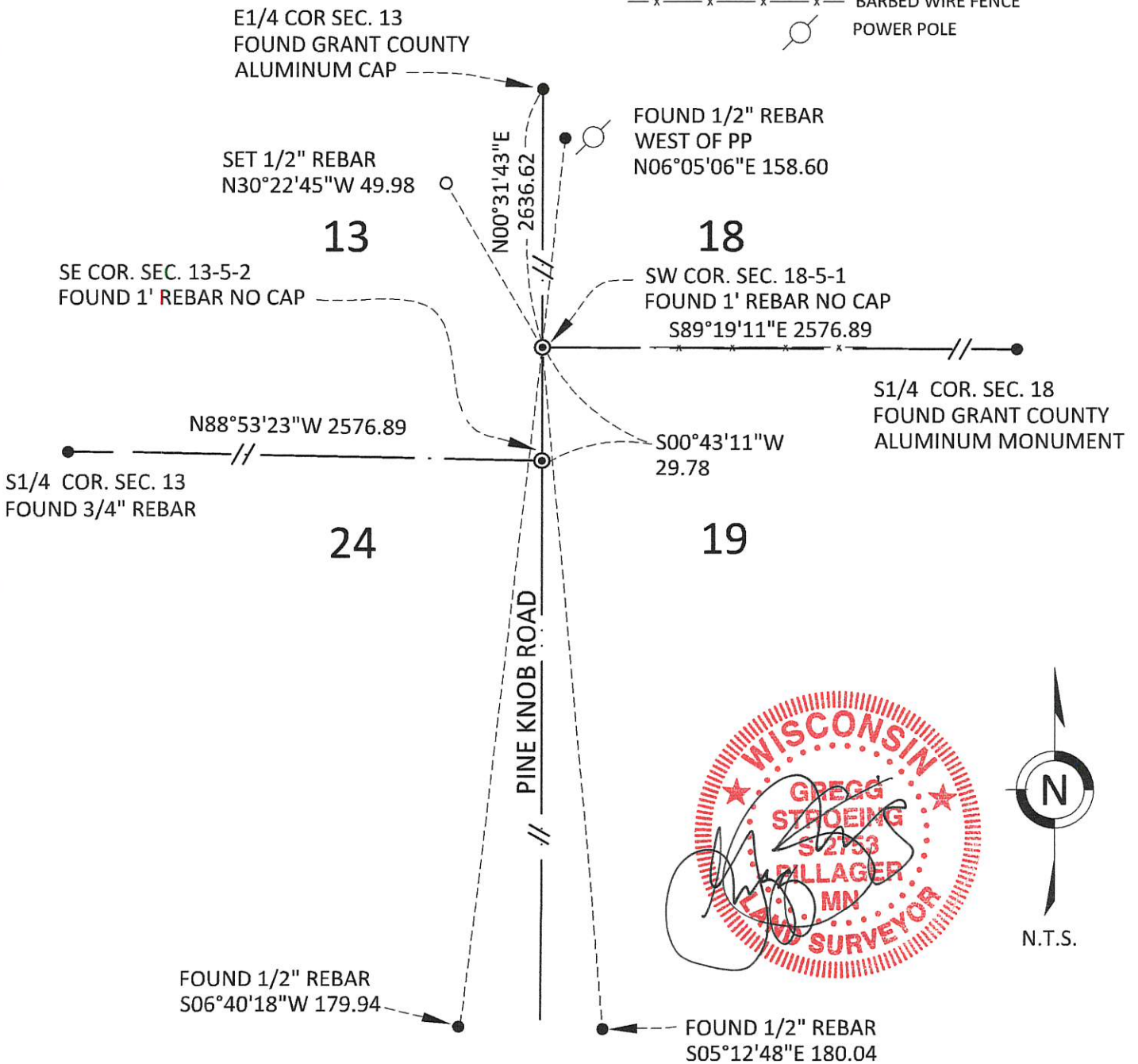
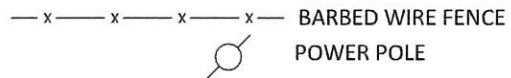
SECTION 18
TOWNSHIP 5 NORTH, RANGE 1 WEST
TOWN OF CLIFTON

(B) DESCRIBE ANY RECORD EVIDENCE, MONUMENT EVIDENCE, OCCUPATIONAL EVIDENCE, TESTIMONIAL EVIDENCE OR ANY OTHER MATERIAL EVIDENCE YOU CONSIDERED, AND WHETHER THE MONUMENT WAS FOUND OR PLACED.

FOUND 1 INCH REBAR IN THE CENTERLINE OF PINE KNOB ROAD AND FENCE LINE TO THE EAST SET BY LARRY L. AUSTIN IN 1999. CAP IS MISSING.

(C) IN THE PLAN VIEW DRAWING BELOW, PROVIDE REFERENCE TIES TO AT LEAST 4 WITNESS MONUMENTS. WITNESS MONUMENTS SHALL BE MADE OF CONCRETE, NATURAL STONE, IRON, BEARING TREES OR ANY OTHER EQUALLY DURABLE MATERIAL. DEPICT THE RELEVANT MONUMENTS AND REFERENCE TIES WITH SUFFICIENT DETAIL TO ENABLE ACCURATE RELOCATION OF THE CORNER IF THE CORNER MONUMENT IS DISTURBED.

(D) LEGEND



GRANT COUNTY U.S. PUBLIC LAND SURVEY MONUMENT RECORD

(E) DESCRIBE ANY MATERIAL DISCREPANCY BETWEEN THE LOCATION OF THE CORNER AS RESTORED OR REESTABLISHED AND THE LOCATION OF THAT CORNER AS PREVIOUSLY RESTORED OR REESTABLISHED BY DISTANCE AND DIRECTION. SHOW THE DISCREPANCY ON THE PLAN VIEW DRAWING UNDER (D), ABOVE. SHOW THE DISTANCES BETWEEN THE CORNER AS PREVIOUSLY RESTORED OR REESTABLISHED AND (1) THE CORNER AS RESTORED OR REESTABLISHED, AND (2) TO AT LEAST 2 OF THE WITNESS MONUMENTS SHOWN ON THE DRAWING IN (D) ABOVE.

N/A

(F) WAS THE CORNER RESTORED THROUGH ACCEPTANCE OF (1) AN OBLITERATED EVIDENCE LOCATION, OR (2) A FOUND PERPETUATED LOCATION?

FOUND AT PERPETUATED LOCATION

(G&H) WAS THE CORNER REESTABLISHED THROUGH LOST CORNER PROPORTIONATE METHODS? IF SO, SHOW THE METHOD, INCLUDING THE DIRECTIONS AND DISTANCES TO OTHER PUBLIC LAND SURVEY CORNERS USED AS EVIDENCE OR USED FOR PROPORTIONING IN DETERMINING THE CORNER LOCATION.

N/A

1. CORNER HISTORY: ORIGINAL POST SET IN 1832 BY HENRY PARKE.
2. IN 1999, BOOK 5, PAGE 24, LARRY L. AUSTIN SET A NO. 8 X 30" REBAR WITH GRANT COUNTY ALUMINUM CAP AT THE INTERSECTION OF A FENCE LINE TO THE EAST AND THE CENTERLINE OF PINE KNOB ROAD ON A PLAT OF SURVEY AND RECORDED A GRANT COUNTY CERTIFIED LAND CORNER.
3. IN 2002, BOOK 11, PAGE 83, LARRY L. AUSTIN FOUND A GRANT COUNTY ALUMINUM MONUMENT ON A PLAT OF SURVEY.
4. IN 2009, BOOK 25, PAGE 63, LARRY L. AUSTIN FOUND A GRANT COUNTY ALUMINUM MONUMENT ON A PLAT OF SURVEY.
5. IN 2014, BOOK 35, PAGE 75, AARON J. AUSTIN FOUND A GRANT COUNTY ALUMINUM MONUMENT ON A PLAT OF SURVEY.
6. IN 2015, BOOK 36, PAGE 58, AARON J. AUSTIN FOUND A GRANT COUNTY ALUMINUM MONUMENT ON A PLAT OF SURVEY.
7. IN 2017, BOOK 40, PAGE 88, AARON J. AUSTIN FOUND A GRANT COUNTY ALUMINUM MONUMENT ON A PLAT OF SURVEY.
8. IN 2019, BOOK 44, PAGE 38, AARON J. AUSTIN FOUND A GRANT COUNTY ALUMINUM MONUMENT ON A PLAT OF SURVEY.
9. IN 2020 GREGG STROEING FOUND A 1" IRON ROD SET BY LARRY L. AUSTIN IN 1999 WITH ALUMINUM CAP MISSING. ACCEPTED THE MONUMENT AS THE SECTION CORNER BASED ON THE PERPETUATION LISTED ABOVE. UPDATED AND SET NEW TIES AS SHOWN IN PART C.

(I) I, GREGG STROEING P.L.S. - 2753, CERTIFY THAT THE CORNER LOCATION SHOWN ON THIS RECORD WAS DETERMINED BY ME OR UNDER MY DIRECTION AND CONTROL AND THAT THIS U.S. PUBLIC LAND SURVEY MONUMENT RECORD IS CORRECT AND COMPLETE TO THE BEST OF MY KNOWLEDGE AND BELIEF.

SIGNATURE

01/06/2021

DATE



CORNER NO. 73

GRANT COUNTY CERTIFIED LAND CORNER

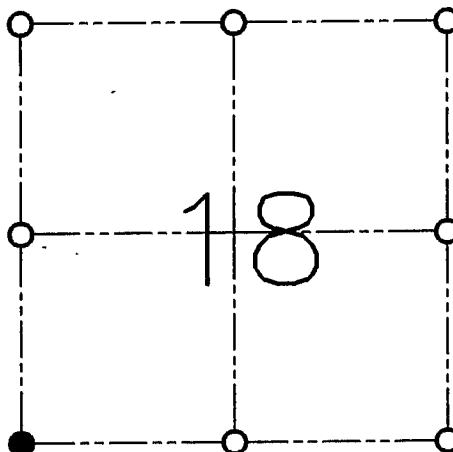
CORNER NO. 73

CERTIFICATE:

I, LARRY L. AUSTIN, DO HEREBY CERTIFY THAT ON NINETEENTH DAY OF MARCH, 1999, I FOUND OCCUPATIONAL EVIDENCE OF THE SOUTHWEST CORNER SECTION 18, TOWN 5 NORTH, RANGE 1 WEST, OF THE FOURTH PRINCIPAL MERIDIAN, AND I RE-ESTABLISHED SAID CORNER ACCORDING TO THE WISCONSIN STATUTES AS SHOWN AND DESCRIBED HEREON.

DATED THIS NINTH DAY OF APRIL, 1999

Larry L. Austin
LARRY L. AUSTIN S-1903



● = CORNER LOCATION

**SOUTHWEST CORNER
SECTION 18, T 5 N R 1 W
TOWN OF CLIFTON**

HISTORY OF ORIGINAL CORNER ESTABLISHMENT:

CORNER WAS SET IN 1832 BY HARVEY PARKE.

DESCRIPTION OF CORNER EVIDENCE FOUND:

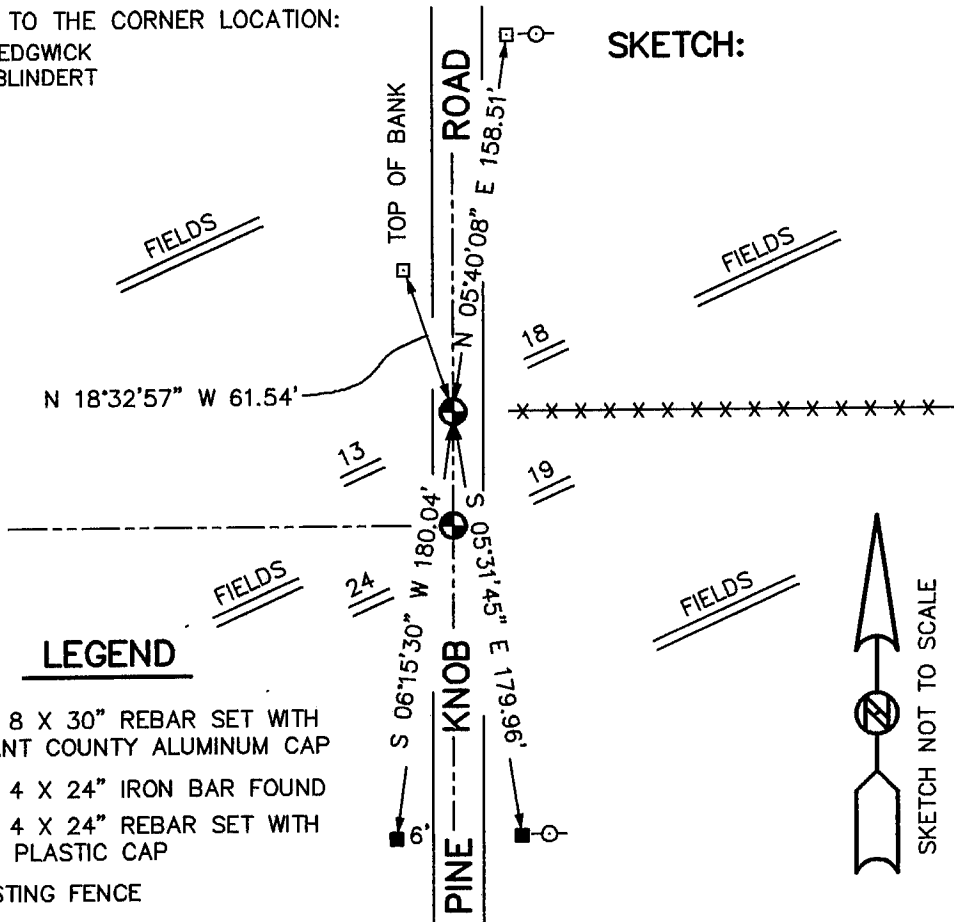
I SET THE CORNER ON THE EAST LINE OF SECTION 13 AT THE RECORDED OFFSET FROM THE SOUTHEAST CORNER OF SECTION 13, T5N R2W. VERIFIED THIS LOCATION USING E.D.M. AND G.P.S. METHODS.

DESCRIPTION OF CORNER AND WITNESS MONUMENTS, REFERENCES AND ACCESSORIES USED TO PERPETUATE THE ORIGINAL OR RE-ESTABLISHED LOCATION OF THIS CORNER:

WITNESS TO THE CORNER LOCATION:

BOBBY SEDGWICK
SHELBY BLINDERT

SKETCH:



LEGEND

- NO. 8 X 30" REBAR SET WITH GRANT COUNTY ALUMINUM CAP
- NO. 4 X 24" IRON BAR FOUND
- NO. 4 X 24" REBAR SET WITH RED PLASTIC CAP
- x-x- EXISTING FENCE
- o- UTILITY POLE

