

# GRANT COUNTY U.S. PUBLIC LAND SURVEY MONUMENT RECORD

(A) IDENTIFY THE CORNER AS REFERENCED TO THE U.S. PUBLIC LAND SURVEY SYSTEM

● = CORNER MONUMENT RESTORED

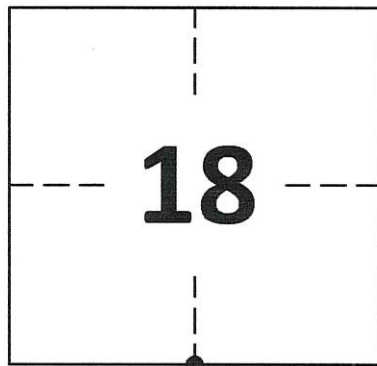
WITNESSES TO CORNER LOCATION:

DAN PETTIS  
CALEB KOLANDER

GEOGRAPHIC COORDINATES  
NAD 83 (2011) ADJUSTMENT

LATITUDE: 42°54'01.9814"  
LONGITUDE: -90°32'12.3324"

WISCONSIN STATE PLANE SOUTH ZONE (US SF):  
NORTHING: 328,686.940  
EASTING: 1,824,678.851



SECTION 18  
TOWNSHIP 5 NORTH, RANGE 1 WEST  
TOWN OF CLIFTON

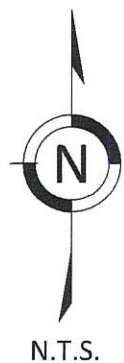
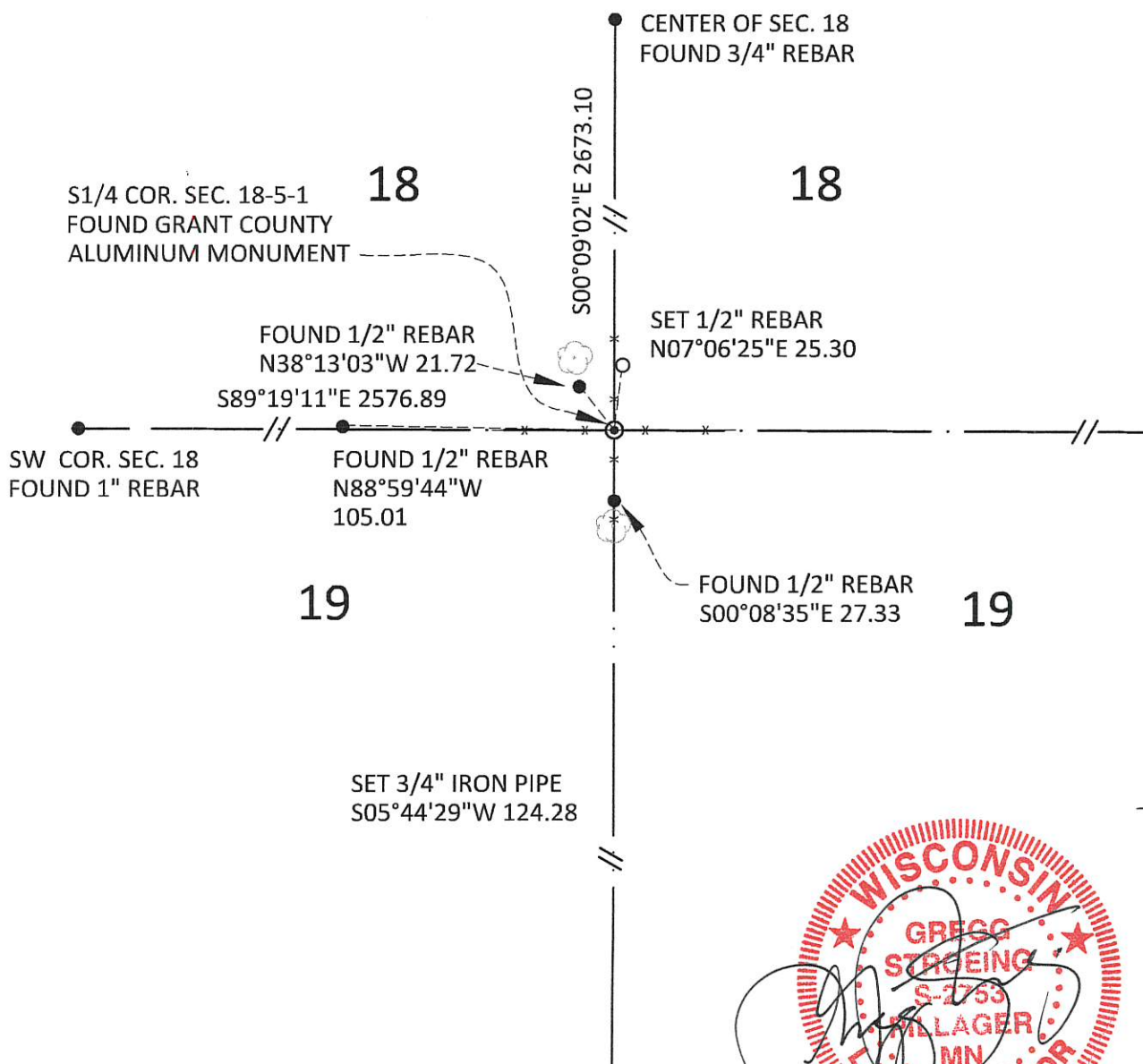
(B) DESCRIBE ANY RECORD EVIDENCE, MONUMENT EVIDENCE, OCCUPATIONAL EVIDENCE, TESTIMONIAL EVIDENCE OR ANY OTHER MATERIAL EVIDENCE YOU CONSIDERED, AND WHETHER THE MONUMENT WAS FOUND OR PLACED.

FOUND GRANT COUNTY ALUMINUM MONUMENT SET AT THE INTERSECTION OF FENCES BY LARRY L. AUSTIN IN 1999.

(C) IN THE PLAN VIEW DRAWING BELOW, PROVIDE REFERENCE TIES TO AT LEAST 4 WITNESS MONUMENTS. WITNESS MONUMENTS SHALL BE MADE OF CONCRETE, NATURAL STONE, IRON, BEARING TREES OR ANY OTHER EQUALLY DURABLE MATERIAL. DEPICT THE RELEVANT MONUMENTS AND REFERENCE TIES WITH SUFFICIENT DETAIL TO ENABLE ACCURATE RELOCATION OF THE CORNER IF THE CORNER MONUMENT IS DISTURBED.

(D) LEGEND

— x — x — x — x — BARBED WIRE FENCE



**GRANT COUNTY  
U.S. PUBLIC LAND SURVEY MONUMENT RECORD**

(E) DESCRIBE ANY MATERIAL DISCREPANCY BETWEEN THE LOCATION OF THE CORNER AS RESTORED OR REESTABLISHED AND THE LOCATION OF THAT CORNER AS PREVIOUSLY RESTORED OR REESTABLISHED BY DISTANCE AND DIRECTION. SHOW THE DISCREPANCY ON THE PLAN VIEW DRAWING UNDER (D), ABOVE. SHOW THE DISTANCES BETWEEN THE CORNER AS PREVIOUSLY RESTORED OR REESTABLISHED AND (1) THE CORNER AS RESTORED OR REESTABLISHED, AND (2) TO AT LEAST 2 OF THE WITNESS MONUMENTS SHOWN ON THE DRAWING IN (D) ABOVE.

N/A

(F) WAS THE CORNER RESTORED THROUGH ACCEPTANCE OF (1) AN OBLITERATED EVIDENCE LOCATION, OR (2) A FOUND PERPETUATED LOCATION?

FOUND AT PERPETUATED LOCATION

(G&H) WAS THE CORNER REESTABLISHED THROUGH LOST CORNER PROPORTIONATE METHODS? IF SO, SHOW THE METHOD, INCLUDING THE DIRECTIONS AND DISTANCES TO OTHER PUBLIC LAND SURVEY CORNERS USED AS EVIDENCE OR USED FOR PROPORTIONING IN DETERMINING THE CORNER LOCATION.

N/A

1. CORNER HISTORY: ORIGINAL POST SET IN 1832 BY HENRY PARKE.
2. IN 1999, BOOK 5, PAGE 24, LARRY L. AUSTIN SET A NO. 8 X 30" REBAR WITH GRANT COUNTY ALUMINUM CAP AT THE INTERSECTION OF FENCES ON A PLAT OF SURVEY AND RECORDED A GRANT COUNTY CERTIFIED LAND CORNER.
3. IN 2002, BOOK 11, PAGE 83, AND PAGE 90, LARRY L. AUSTIN FOUND A GRANT COUNTY ALUMINUM MONUMENT ON PLATS OF SURVEY.
4. IN 2005, BOOK 17, PAGE 64, LARRY L. AUSTIN FOUND A GRANT COUNTY ALUMINUM MONUMENT ON A PLAT OF SURVEY.
5. IN 2005, BOOK 19, PAGE 85, LARRY L. AUSTIN FOUND A GRANT COUNTY ALUMINUM MONUMENT ON A PLAT OF SURVEY.
6. IN 2009, BOOK 25, PAGE 63, LARRY L. AUSTIN FOUND A GRANT COUNTY ALUMINUM MONUMENT ON A PLAT OF SURVEY.
7. IN 2013, BOOK 34, PAGE 18, AARON J. AUSTIN FOUND A GRANT COUNTY ALUMINUM MONUMENT ON A PLAT OF SURVEY.
8. IN 2014, BOOK 35, PAGE 75, AARON J. AUSTIN FOUND A GRANT COUNTY ALUMINUM MONUMENT ON A PLAT OF SURVEY.
9. IN 2017, BOOK 40, PAGE 88, AARON J. AUSTIN FOUND A GRANT COUNTY ALUMINUM MONUMENT ON A PLAT OF SURVEY.
10. IN 2019, BOOK 44, PAGE 38, AARON J. AUSTIN FOUND A GRANT COUNTY ALUMINUM MONUMENT ON A PLAT OF SURVEY.
11. IN 2020 GREGG STROEING FOUND A GRANT COUNTY ALUMINUM MONUMENT AND ACCEPTED THE MONUMENT AS THE QUARTER CORNER BASED ON THE PERPETUATION LISTED ABOVE, UPDATED AND SET NEW TIES AS SHOWN IN PART C.

(I) I, GREGG STROEING P.L.S. - 2753, CERTIFY THAT THE CORNER LOCATION SHOWN ON THIS RECORD WAS DETERMINED BY ME OR UNDER MY DIRECTION AND CONTROL AND THAT THIS U.S. PUBLIC LAND SURVEY MONUMENT RECORD IS CORRECT AND COMPLETE TO THE BEST OF MY KNOWLEDGE AND BELIEF.

SIGNATURE

12/17/2020

DATE



CORNER NO. 72

# GRANT COUNTY CERTIFIED LAND CORNER

CORNER NO. 72

**CERTIFICATE:**

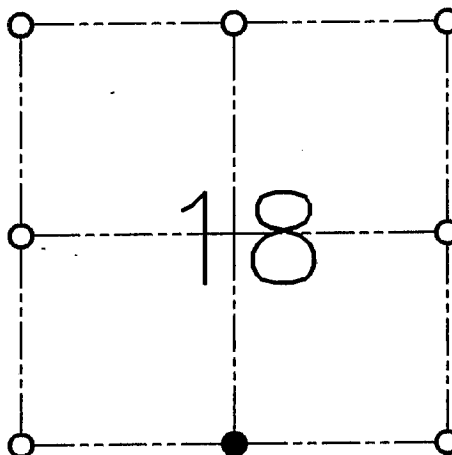
I, LARRY L. AUSTIN, DO HEREBY CERTIFY THAT ON NINETEENTH DAY OF MARCH, 1999, I FOUND OCCUPATIONAL EVIDENCE OF THE SOUTH 1/4 CORNER OF SECTION 18, TOWN 5 NORTH, RANGE 1 WEST, OF THE FOURTH PRINCIPAL MERIDIAN, AND I RE-ESTABLISHED SAID CORNER ACCORDING TO THE WISCONSIN STATUTES AS SHOWN AND DESCRIBED HEREON.

DATED THIS NINTH DAY OF APRIL, 1999

*Larry L. Austin*  
LARRY L. AUSTIN S-1903



SEAL



● = CORNER LOCATION

**SOUTH 1/4 CORNER OF  
SECTION 18, T 5 N R 1 W  
TOWN OF CLIFTON**

**HISTORY OF ORIGINAL CORNER ESTABLISHMENT:**

CORNER WAS SET IN 1832 BY HARVEY PARKE.

**DESCRIPTION OF CORNER EVIDENCE FOUND:**

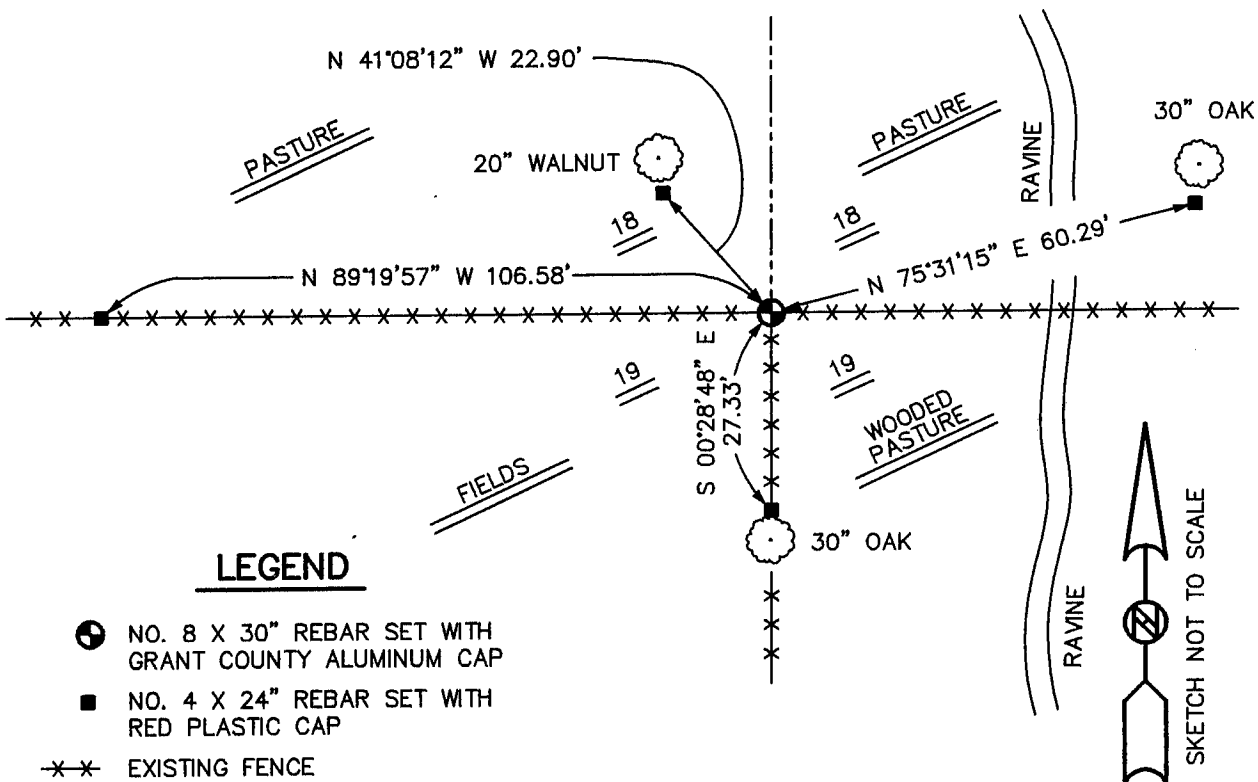
I FOUND AN OCCUPIED FENCE CORNER. I ACCEPTED THIS LOCATION AFTER AN E.D.M. AND G.P.S. TRAVERSE OF THE AREA.

**DESCRIPTION OF CORNER AND WITNESS MONUMENTS, REFERENCES AND ACCESSORIES USED TO PERPETUATE THE ORIGINAL OR RE-ESTABLISHED LOCATION OF THIS CORNER:**

**WITNESS TO THE CORNER LOCATION:**

BOBBY SEDGWICK  
SHELBY BLINDERT

**SKETCH:**



**LEGEND**

- NO. 8 X 30" REBAR SET WITH GRANT COUNTY ALUMINUM CAP
- NO. 4 X 24" REBAR SET WITH RED PLASTIC CAP
- \*- EXISTING FENCE

