



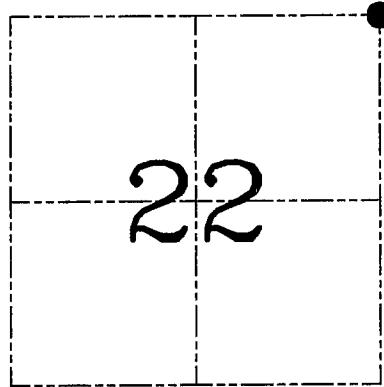
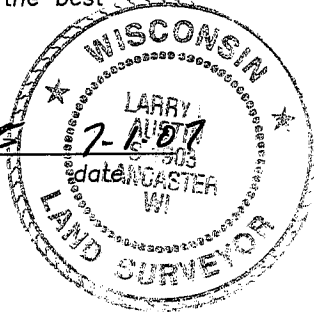
**U.S. PUBLIC LAND SURVEY MONUMENT RECORD – GRANT COUNTY, WI**

**Section 22, Town 5 North Range 1 West, Town of Clifton**

CERTIFICATE

I, Larry L. Austin, do hereby certify that the corner location on this record was determined by me and/or under my direct supervision and that this U.S. public land survey monument record is correct and complete to the best of my knowledge and belief.

*Larry L. Austin*  
 Larry L. Austin, S-1903



● = CORNER LOCATION

HISTORY OF CORNER ESTABLISHMENT

Corner was originally set in 1832 by Parke. Stuntz, Barber, and Sampson tied to the corner. Stampson found a Stone set by Barber. No other record of the corner was found.

DESCRIPTION OF CORNER EVIDENCE FOUND

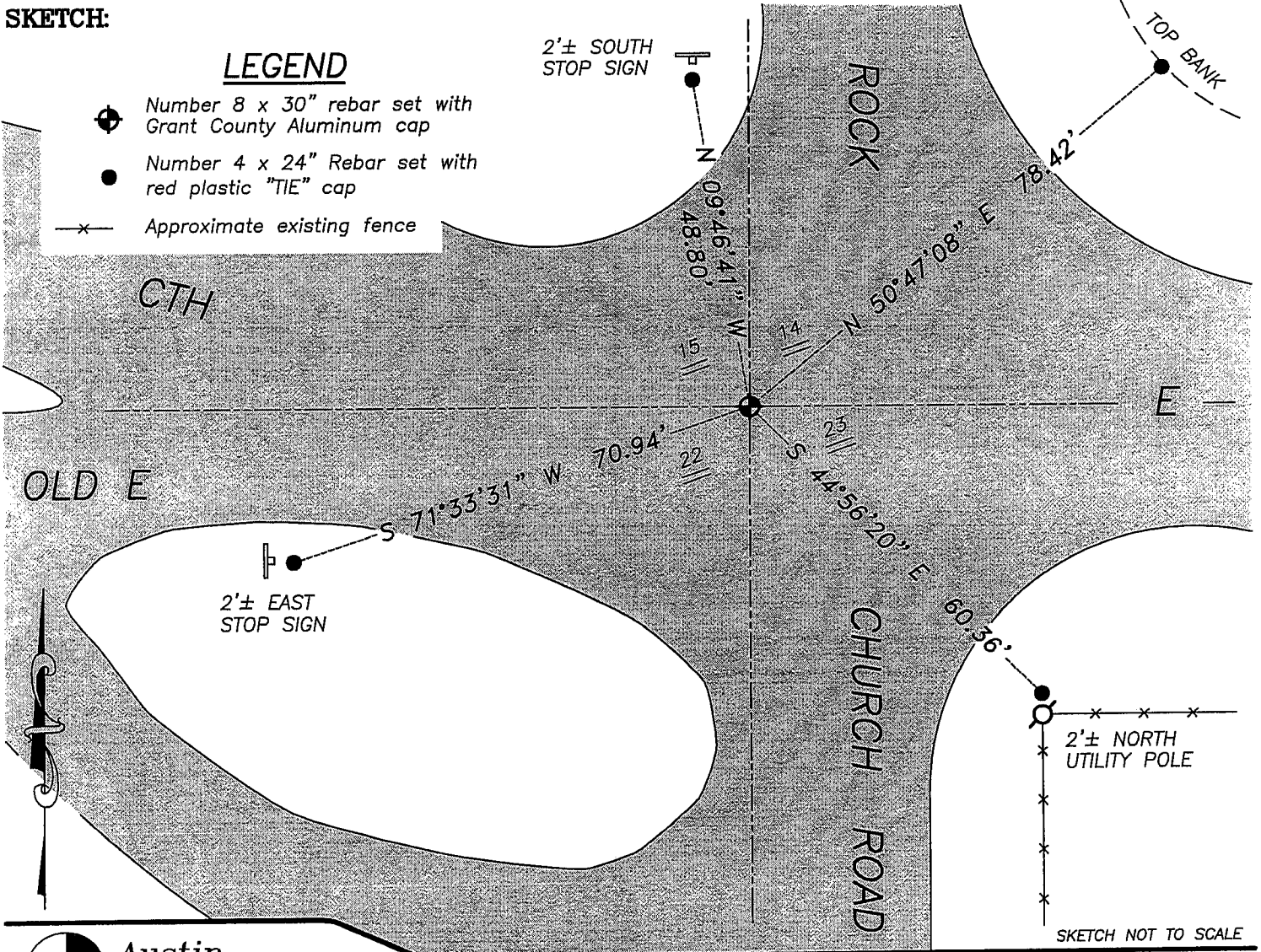
I was unable to locate the Stone due to existing roads in the area of the corner. I reset the corner by doubling the North line of the NW 1/4 of the NE 1/4 of Section 22 to the East. This location fit occupational and monumented evidence in the area very well. Verified this location using EDM & GPS methods.

DESCRIPTION OF CORNER AND WITNESS MONUMENTS, references and accessories used to perpetuate the original or re-established location of this corner. Witnesses to corner location Bobby Sedgwick & Brad Digman & Shelby Blindert

**SKETCH:**

LEGEND

- Number 8 x 30" rebar set with Grant County Aluminum cap
- Number 4 x 24" Rebar set with red plastic "TIE" cap
- x— Approximate existing fence



**Austin Engineering LLC**

4211 HWY 81 E, LANCASTER, WI 53813  
 PHONE 608-723-6363 FAX 608-723-6702

JOB NUMBER 07S071  
 FIELDBOOK: TDSR, 2701  
 G:\T5NR1W\32  
 H:\TIE\T5NR1W\65

DRAWN BY: SW AUSTIN  
 APPROVED: LL AUSTIN