

U.S. PUBLIC LAND SURVEY MONUMENT RECORD - GRANT COUNTY, WI

Section 14, Town 5 North Range 1 West, Town of Clifton (a)

NOTE: This form is intended and designed to fulfill all requirements of the Wisconsin Administrative Code Chapter A-E 7.08, U.S. Public Land Survey Monument Record (3) (a) (b) (c) (d) (e) (f) (g) (h) (i).

CERTIFICATE: (i)

I, Aaron J. Austin, Wisconsin Professional Land Surveyor, do hereby certify that the corner location on this record was determined by me and/or under my direct supervision and that this U.S. Public Land Survey Monument Record is correct and complete to the best of my knowledge and belief.

Dated this 9th day of September, 2019.

Aaron J. Austin
Aaron J. Austin, S-2922



Grant County Coordinates:
NAD 83 (2011)
Northing: 542,876.34
Easting: 886,816.50

HISTORY OF CORNER ESTABLISHMENT:

Original corner was set in 1832 by Harvey Parke.
Larry Austin set a 3/4" Rebar with a Grant County Aluminum Cap and prepared a Survey Monument Record dated 4-6-1997.

DESCRIPTION OF CORNER EVIDENCE FOUND: (b) (f) (g) (h)

I set a 1/2" x 4 3/4" Steel Cotton Gin Spike from the distances of three witness corners. I reset one witness corner and verified the Monument's location with G.P.S. and E.D.M. methods.

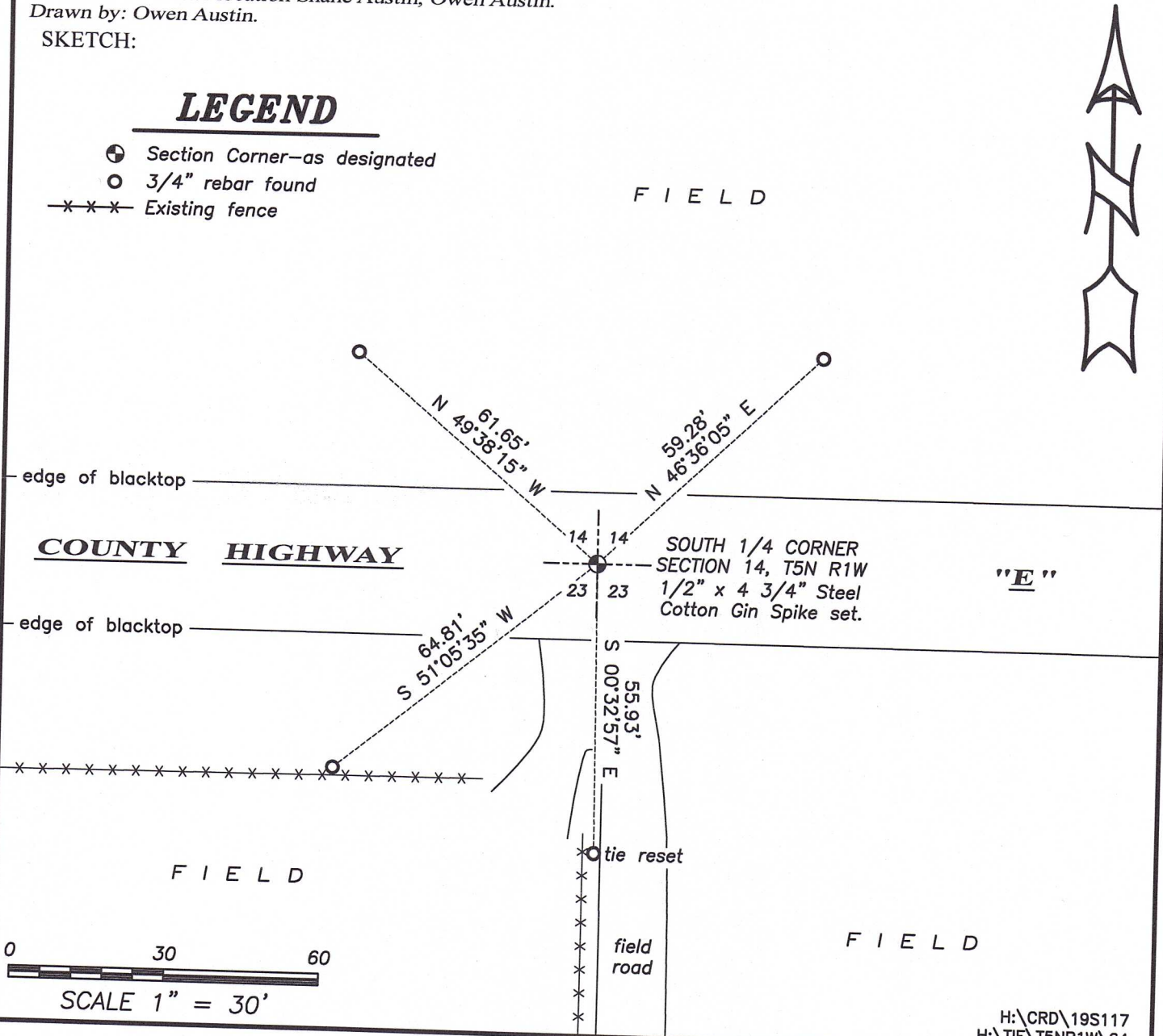
DESCRIPTION OF CORNER AND WITNESS MONUMENTS: references and accessories used to perpetuate the original or re-established location of this corner. (c) (d) (e)

Witnesses to corner location Shane Austin, Owen Austin.
Drawn by: Owen Austin.

SKETCH:

LEGEND

- ⊕ Section Corner—as designated
- 3/4" rebar found
- x-x-x- Existing fence



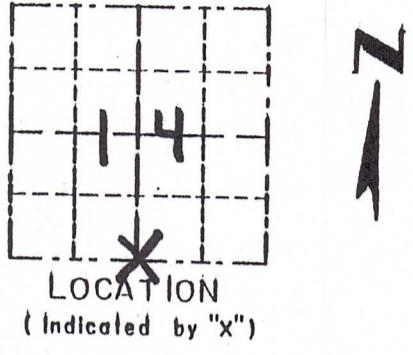
51064

GRANT COUNTY

Survey Monument Record

TYPE OF MONUMENT 3/4" X 24" IRON BAR SET
 STATE PLANE COORDINATES: N W/CAP
 E _____
 ELEVATION — M.S.L. DATUM: _____
 THETA ANGLE: _____
 FIELD BOOK: 96-02
 PAGE (10)

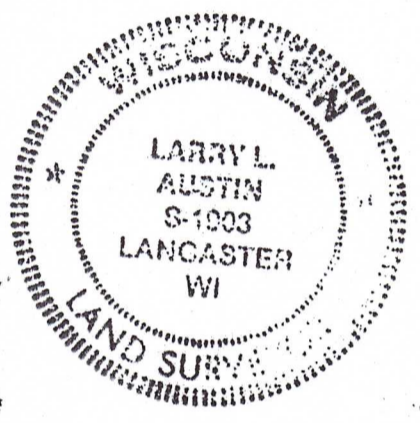
CORNER NO. 64
 SECTION 14
 TOWN 5N
 RANGE 1W



BASIS FOR MONUMENT LOCATION

(Use reverse side if necessary)

CORNER SET IN 1832 BY HARVEY PARKE. ORIGINAL CORNER SEAL WAS UNRECOVERABLE. IN 1877 JOEL BARBER FOUND A ROCK SET BY JOSEPH ALLEN. THE ROCK WAS UNRECOVERABLE. CORNER SET AT AN OCCUPIED LOCATION, VERIFIED ITS LOCATION USING EDM METHODS.



CERTIFIED CORRECT
Larry L. Austin
 Registered Land Surveyor
 DATE: 4/6/97

TIE SKETCH

Show at least three (3) ties and monument

LEGEND

- ⊕ 3/4" X 24" IRON BAR SET W/CAP
- 1/2" X 18" IRON BAR SET
- EXISTING FENCE

