

51063

U.S. PUBLIC LAND SURVEY MONUMENT RECORD - GRANT COUNTY, WI

Section 24, Town 5 North Range 1 West, Town of Clifton(a)

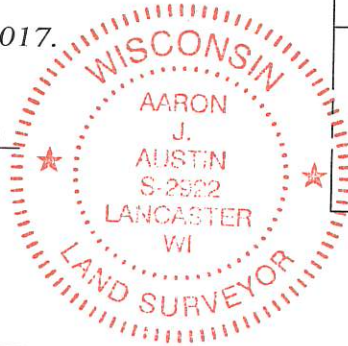
NOTE: This form is intended and designed to fulfill all requirements of the Wisconsin Administrative Code Chapter A-E 7.08, U.S. Public Land Survey Monument Record (3) (a) (b) (c) (d) (e) (f) (g) (h) (i).

CERTIFICATE: (i)

I, Aaron J. Austin, Wisconsin Professional Land Surveyor, do hereby certify that the corner location on this record was determined by me and/or under my direct supervision and that this U.S. Public Land Survey Monument Record is correct and complete to the best of my knowledge and belief.

Dated this 28th day of December, 2017.

Aaron J. Austin
Aaron J. Austin, S-2922



⊙ = CORNER LOCATION

HISTORY OF CORNER ESTABLISHMENT:

Stan King set a 3/4" rebar at the corner and prepared a Survey Monument Record dated 2-24-1999.

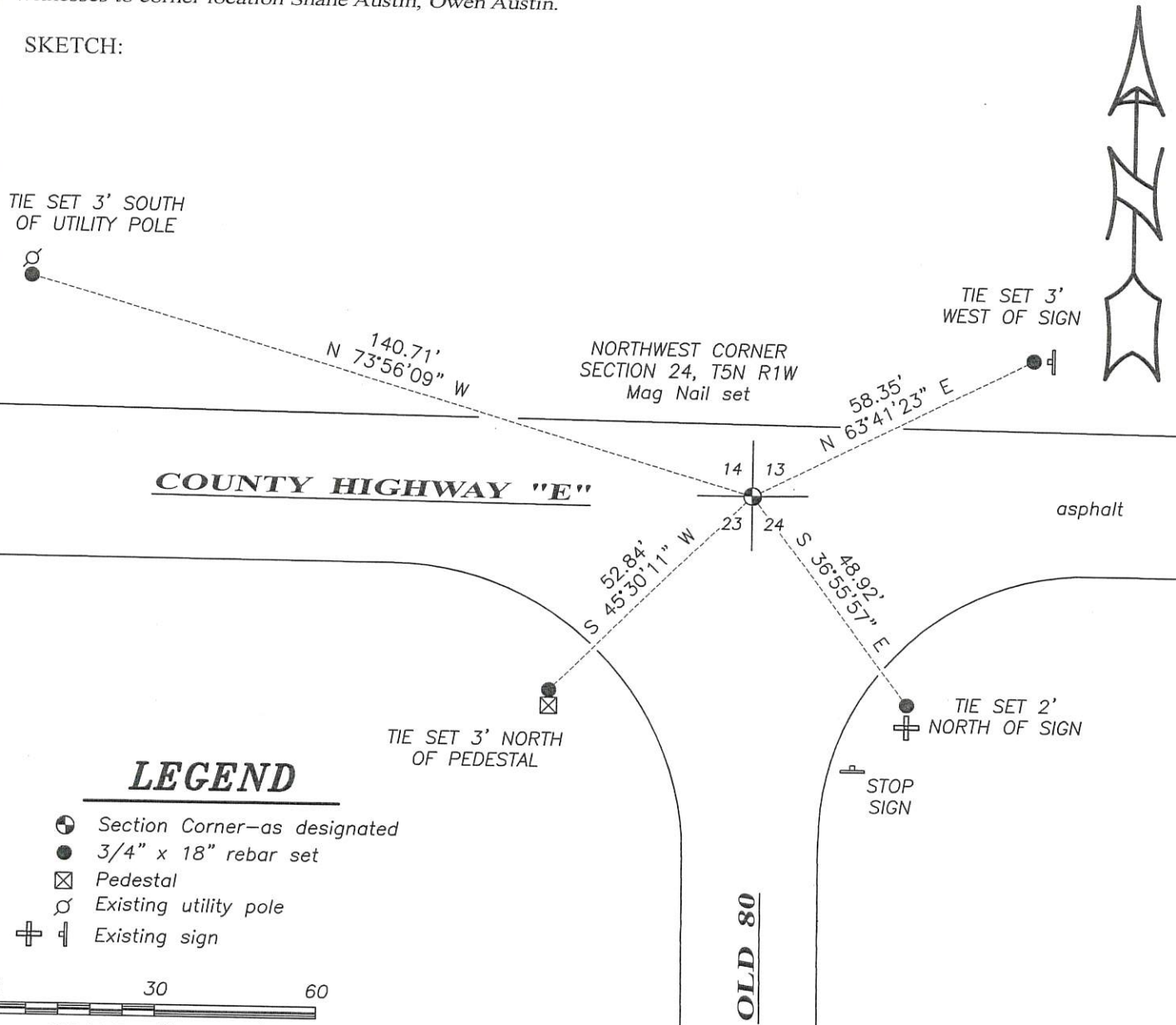
DESCRIPTION OF CORNER EVIDENCE FOUND: (b) (f) (g) (h)

Corner was retraced from measurements taken to Certified Survey Map Number 1424 and Certified Survey Map Number 530. This location fits well with a faint metal detector reading under the asphalt. I verified the location with G.P.S. and E.D.M. methods.

DESCRIPTION OF CORNER AND WITNESS MONUMENTS: references and accessories used to perpetuate the original or re-established location of this corner. (c) (d) (e)

Witnesses to corner location Shane Austin, Owen Austin.

SKETCH:



LEGEND

- ⊙ Section Corner—as designated
- 3/4" x 18" rebar set
- ⊠ Pedestal
- ⊕ Existing utility pole
- ⊞ Existing sign



SCALE 1" = 30'

CERTIFIED LAND CORNER

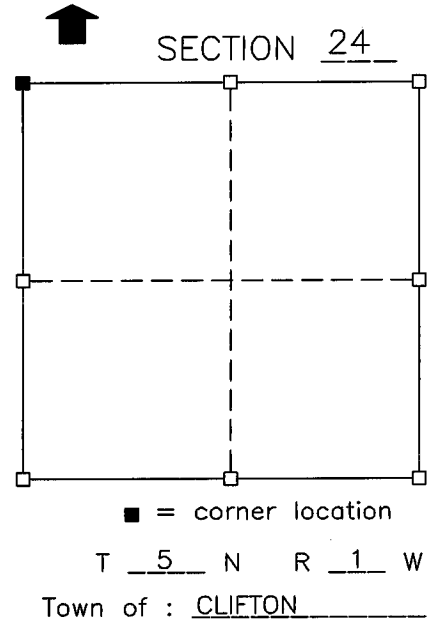
(STATE OF WISCONSIN)
 (COUNTY OF GRANT) S.S.

CERTIFICATE

I, Stanley King, do hereby certify that on the 11TH day of NOV. 1998, I found (evidence) (~~no evidence~~) of the NW corner of SECTION 24, T 5 N, R 1 W, Fourth Principal Meridian, and I re-established said corner according to the Wisconsin Statutes as shown and described hereon.

Dated this 24TH day of FEB. 1999

Stanley King
 REGISTERED LAND SURVEYOR, S-2001

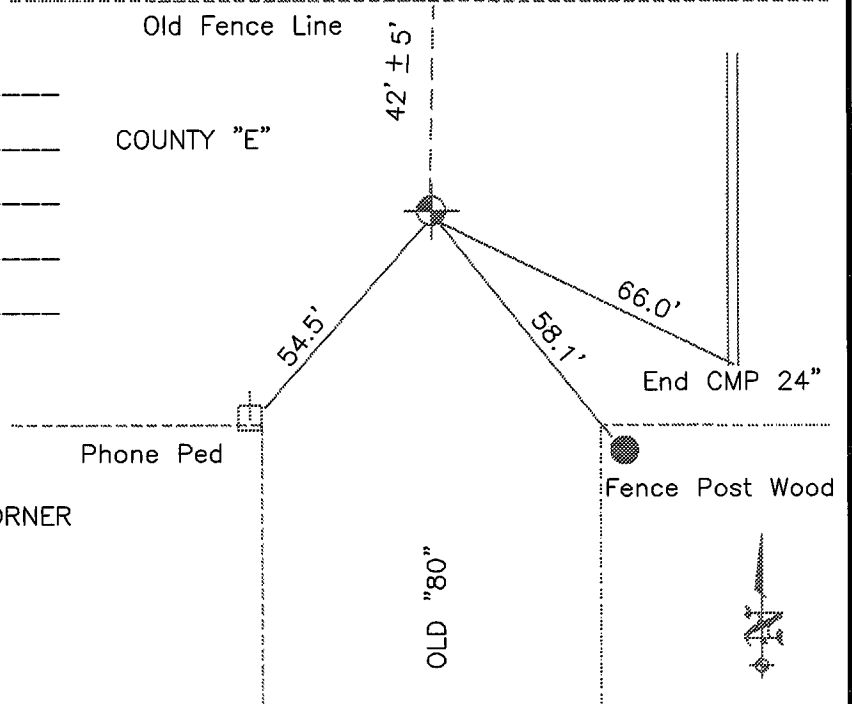


History of original corner establishment: Reset corner from previous surveys completed prior to corner being destroyed from road construction.

Description of corner evidence found:

Description of corner and witness monuments, references and accessories used to perpetuate the original or re-established location of this corner: Sketch:

Witnesses to corner location:
 BRAD J. HAZEN
 MICHAEL M. MILLER



SET A 3/4" X 24"
 SOLID ROUND IRON ROD AT THE CORNER

SURVEY CONTROL ORDER

Horizontal				
Vertical				
Corner	East (X)	North (Y)	Elevation (Z)	Zone
Control sta. Name				