

U.S. PUBLIC LAND SURVEY MONUMENT RECORD - GRANT COUNTY, WI

Section 15, Town 5 North Range 1 West, Town of CLIFTON (a)

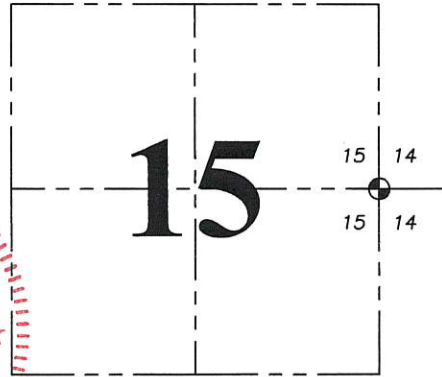
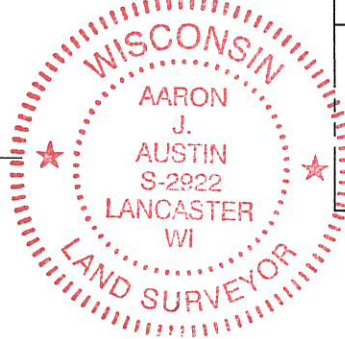
NOTE: This form is intended and designed to fulfill all requirements of the Wisconsin Administrative Code Chapter A-E 7.08, U.S. Public Land Survey Monument Record (3) (a) (b) (c) (d) (e) (f) (g) (h) (i).

CERTIFICATE: (i)

I, Aaron J. Austin, Wisconsin Professional Land Surveyor, do hereby certify that the corner location on this record was determined by me and/or under my direct supervision and that this U.S. Public Land Survey Monument Record is correct and complete to the best of my knowledge and belief.

Dated this 25th day of April, 2018.

Aaron J. Austin
Aaron J. Austin, S-2922



⊕ = CORNER LOCATION

HISTORY OF CORNER ESTABLISHMENT:

Harvey Parke set the original corner in 1832.
Larry Austin set a 3/4" Rebar with a Grant County Aluminum Cap at the corner and prepared a Survey Monument Record dated 4-6-1997.

DESCRIPTION OF CORNER EVIDENCE FOUND: (b) (f) (g) (h)

I found the 3/4" rebar as set by Larry Austin. I set four new witness corners after I verified it's location with G.P.S. and E.D.M. methods

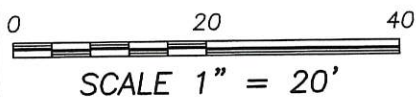
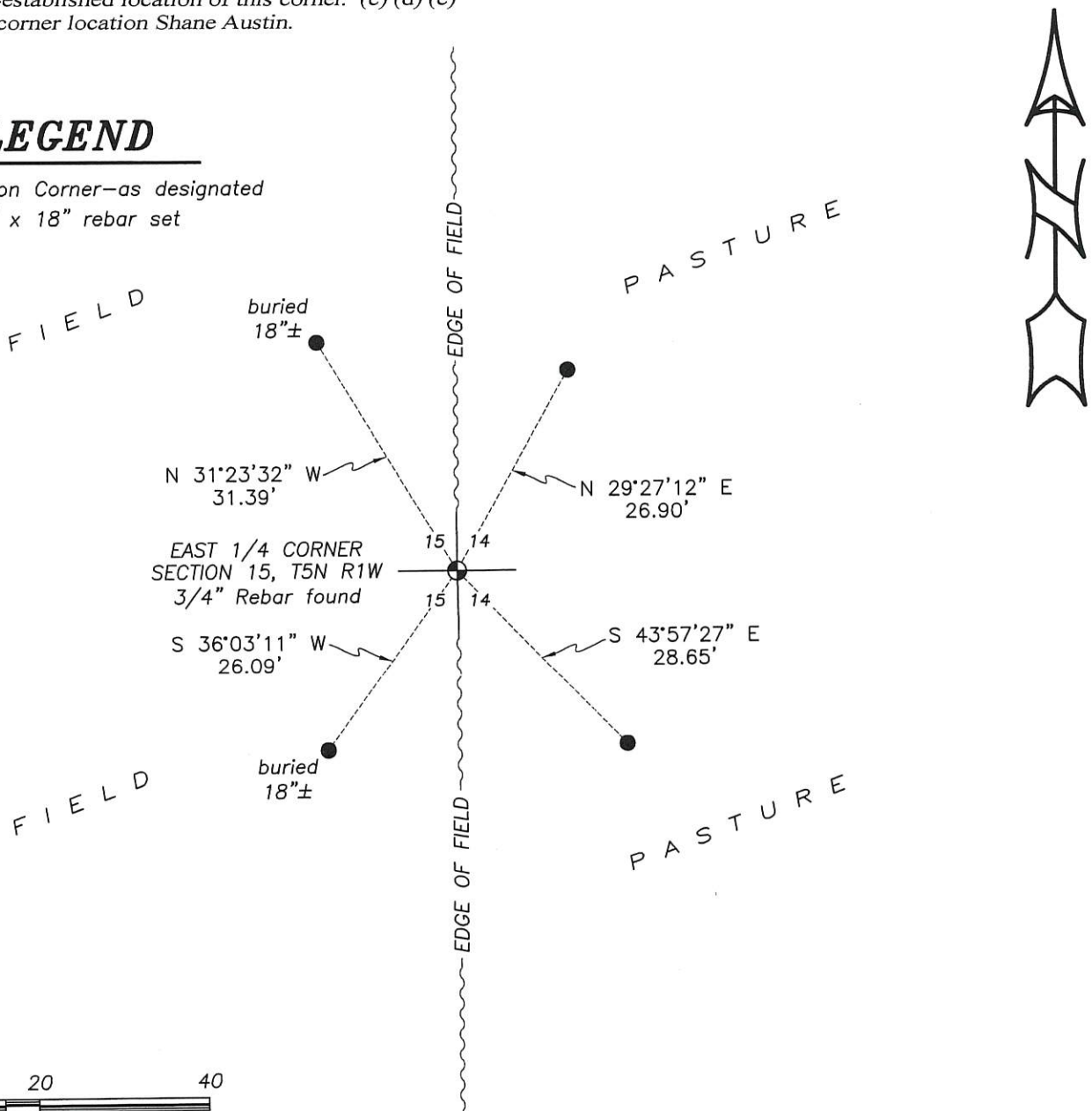
DESCRIPTION OF CORNER AND WITNESS MONUMENTS: references and accessories used to perpetuate the original or re-established location of this corner. (c) (d) (e)

Witnesses to corner location Shane Austin.

SKETCH:

LEGEND

- ⊕ Section Corner—as designated
- 3/4" x 18" rebar set



GRANT COUNTY

Survey Monument Record

TYPE OF MONUMENT 3/4" X 24" IRON BAR SET

STATE PLANE COORDINATES: N WI CAP.
E _____

ELEVATION — M.S.L. DATUM: _____

THETA ANGLE: _____

FIELD BOOK: 96-02

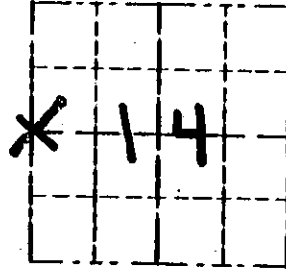
PAGE (10)

CORNER NO. 58

SECTION 14

TOWN 5N

RANGE 1W



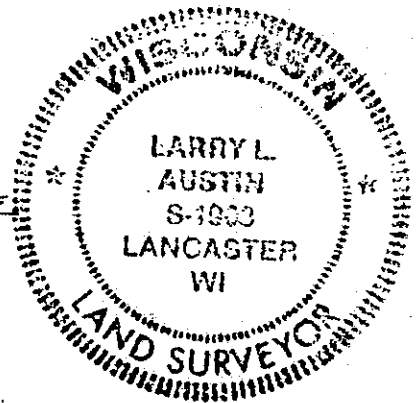
LOCATION
(Indicated by "X")

BASIS FOR MONUMENT LOCATION

(Use reverse side if necessary)

CORNER SET IN 1832 BY HARVEY PARKE. ORIGINAL BEARING, TREES WERE UNRECOVERABLE. NO RECORD OF CORNER FOUND SINCE ORIGINAL SURVEYS. CORNER SET BY PROJECTING A FENCE WEST AND USING A CHANGE IN FIELDS WITH REMNANTS OF FENCE FOR EAST/WEST LOCATION. VERIFIED ITS LOCATION USING EDM METHODS.

SEAL:



CERTIFIED CORRECT

Larry L. Austin
Registered Land Surveyor

DATE: 4/6/97

TIE SKETCH

Show at least three (3) ties and monument

