

GRANT COUNTY U.S. PUBLIC LAND SURVEY MONUMENT RECORD

(A) IDENTIFY THE CORNER AS REFERENCED TO THE U.S. PUBLIC LAND SURVEY SYSTEM

● = CORNER MONUMENT RESTORED

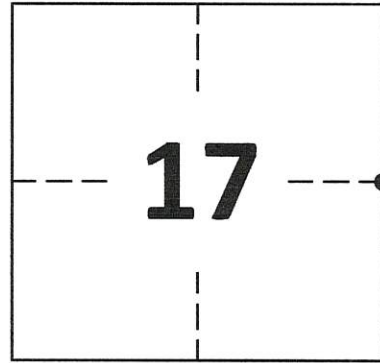
WITNESSES TO CORNER LOCATION:

DAN PETTIS
CALEB KOLANDER

GEOGRAPHIC COORDINATES
NAD 83 (2011) ADJUSTMENT

LATITUDE: 42°54'27.4807"
LONGITUDE: -90°30'26.1752"

WISCONSIN STATE PLANE SOUTH ZONE (US SF):
NORTHING: 331,218.951
EASTING: 1,832,595.605



SECTION 17
TOWNSHIP 5 NORTH, RANGE 1 WEST
TOWN OF CLIFTON

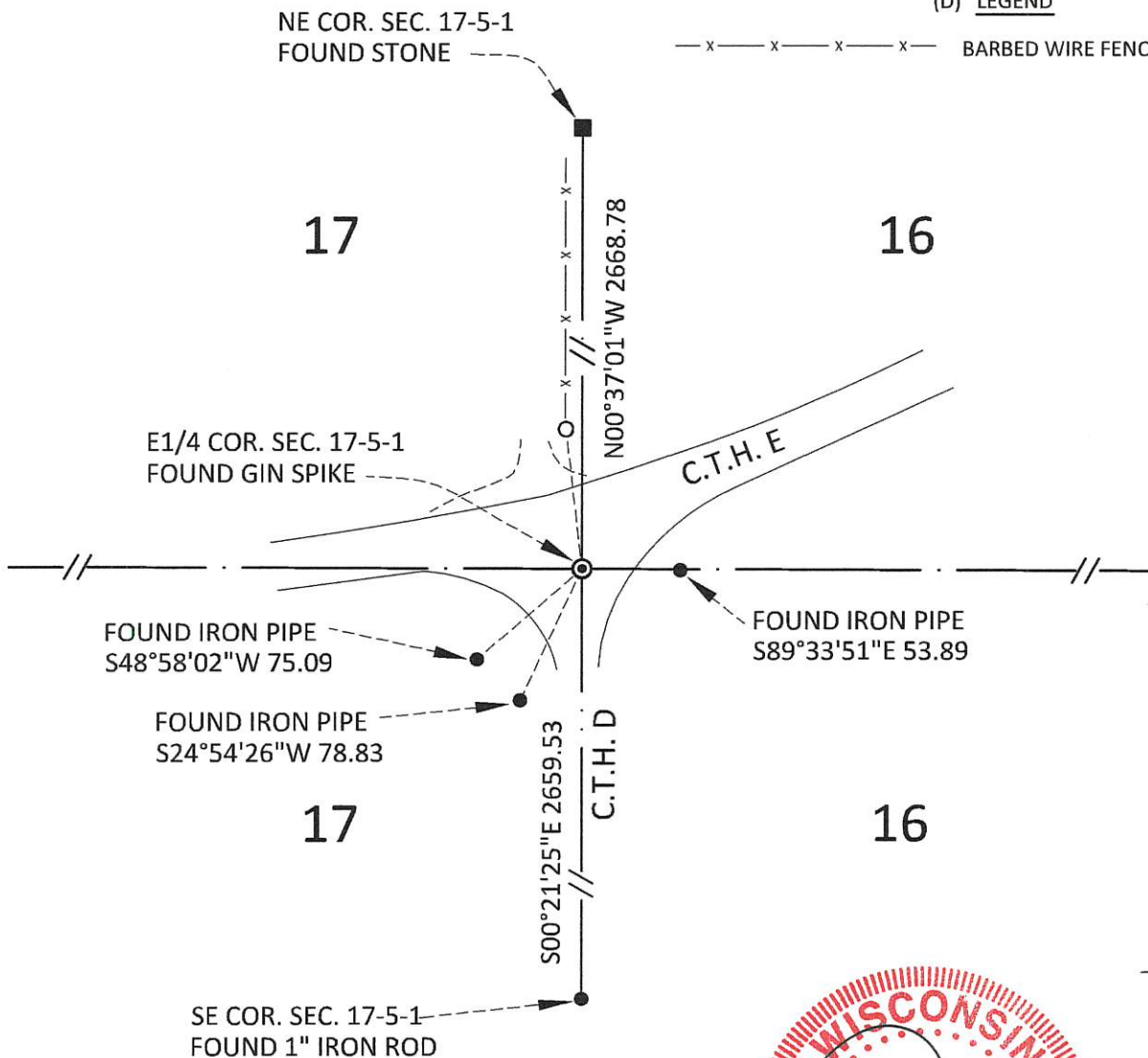
(B) DESCRIBE ANY RECORD EVIDENCE, MONUMENT EVIDENCE, OCCUPATIONAL EVIDENCE, TESTIMONIAL EVIDENCE OR ANY OTHER MATERIAL EVIDENCE YOU CONSIDERED, AND WHETHER THE MONUMENT WAS FOUND OR PLACED.

FOUND GIN SPIKE IN LOCATION THAT MICHAEL R. LaROSA SET A PK NAIL IN 1995.

(C) IN THE PLAN VIEW DRAWING BELOW, PROVIDE REFERENCE TIES TO AT LEAST 4 WITNESS MONUMENTS. WITNESS MONUMENTS SHALL BE MADE OF CONCRETE, NATURAL STONE, IRON, BEARING TREES OR ANY OTHER EQUALLY DURABLE MATERIAL. DEPICT THE RELEVANT MONUMENTS AND REFERENCE TIES WITH SUFFICIENT DETAIL TO ENABLE ACCURATE RELOCATION OF THE CORNER IF THE CORNER MONUMENT IS DISTURBED.

(D) LEGEND

— x — x — x — x — BARBED WIRE FENCE



GRANT COUNTY
U.S. PUBLIC LAND SURVEY MONUMENT RECORD

(E) DESCRIBE ANY MATERIAL DISCREPANCY BETWEEN THE LOCATION OF THE CORNER AS RESTORED OR REESTABLISHED AND THE LOCATION OF THAT CORNER AS PREVIOUSLY RESTORED OR REESTABLISHED BY DISTANCE AND DIRECTION. SHOW THE DISCREPANCY ON THE PLAN VIEW DRAWING UNDER (D), ABOVE. SHOW THE DISTANCES BETWEEN THE CORNER AS PREVIOUSLY RESTORED OR REESTABLISHED AND (1) THE CORNER AS RESTORED OR REESTABLISHED, AND (2) TO AT LEAST 2 OF THE WITNESS MONUMENTS SHOWN ON THE DRAWING IN (D) ABOVE.

N/A

(F) WAS THE CORNER RESTORED THROUGH ACCEPTANCE OF (1) AN OBLITERATED EVIDENCE LOCATION, OR (2) A FOUND PERPETUATED LOCATION?

FOUND AT PERPETUATED LOCATION

(G&H) WAS THE CORNER REESTABLISHED THROUGH LOST CORNER PROPORTIONATE METHODS? IF SO, SHOW THE METHOD, INCLUDING THE DIRECTIONS AND DISTANCES TO OTHER PUBLIC LAND SURVEY CORNERS USED AS EVIDENCE OR USED FOR PROPORTIONING IN DETERMINING THE CORNER LOCATION.

N/A

1. CORNER HISTORY: IN 1832 HENRY PARKE SET ORIGINAL CORNER
2. IN 1856, BOOK B, PAGE 517, C.T. OVERTON FOUND THE ORIGINAL CORNER
3. IN 1970, BOOK 15, PAGE 18, CHARLES LANG INDICATES A TRIPLE CIRCLE AT THIS CORNER BUT DOES NOT INDICATE THE MONUMENT TYPE. IT IS 54.00 FEET WEST OF A 1" IRON PIPE. WE FOUND THIS IRON PIPE AND MEASURE 53.89 FEET TO THE GIN SPIKE.
4. IN 1995, BOOK W, PAGE 30, MICHAEL R. LaRUSSA SET A PK NAIL AND RECORDED A SURVEY MONUMENT RECORD.
5. IN 1995, BOOK W, PAGE 45, MICHAEL R. LaRUSSA INDICATES A FOUND PK NAIL.
6. IN 1995, BOOK W, PAGE 47, MICHAEL R. LaRUSSA INDICATES A FOUND PK NAIL.
7. IN 1997, BOOK 1, PAGE 38, MICHAEL R. LaRUSSA INDICATES A FOUND PK NAIL.
8. IN 1999, BOOK 6, PAGE 69, LAWRENCE E. SCHMIT, SET A 7/8" REBAR AT THIS LOCATION BASE ON "RECORD LOCATION FROM TIES FOUND IN PLACE."
9. IN 2003, BOOK 14, PAGE 15, MICHAEL R. LaRUSSA FOUND A 7/8" REBAR AT THIS LOCATION.
10. IN 2000, BOOK 12, PAGE 1, LAWRENCE E. SCHMIT, INDICATES A FOUND NAIL.
11. IN 2017, BOOK 40, PAGE 54, AARON J. AUSTIN, SET A 1/2"X 4 1/2" COTTON GIN SPIKE AND INDICATED THAT ALL TIES WERE FOUND AND VERIFIED.
12. IN 2020 GREGG STROEING ACCEPTED THIS POSITION OF THE GIN SPIKE SET BY AARON J. AUSTIN IN 2017. THIS POSITION FIT 3 OF THE ASSESSORY TIES ON THE LaRUSSA MONUMENT RECORD. UPDATED AND SET NEW TIES AS SHOWN IN PART C

(I) I, GREGG STROEING P.L.S. - 2753, CERTIFY THAT THE CORNER LOCATION SHOWN ON THIS RECORD WAS DETERMINED BY ME OR UNDER MY DIRECTION AND CONTROL AND THAT THIS U.S. PUBLIC LAND SURVEY MONUMENT RECORD IS CORRECT AND COMPLETE TO THE BEST OF MY KNOWLEDGE AND BELIEF.

SIGNATURE

12/08/2020

DATE



CORNER NO. 56

Survey Monument Record

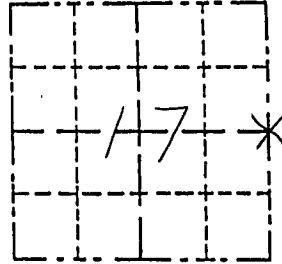
TYPE OF MONUMENT P.K. Nail set
 STATE PLANE COORDINATES: N _____
 E _____
 ELEVATION — M.S.L. DATUM: _____
 THETA ANGLE: _____
 FIELD BOOK: 95-9
 PAGE 953-309, 347

CORNER NO. _____
 SECTION 17
 TOWN 510
 RANGE 1W

BASIS FOR MONUMENT LOCATION

(Use reverse side if necessary)

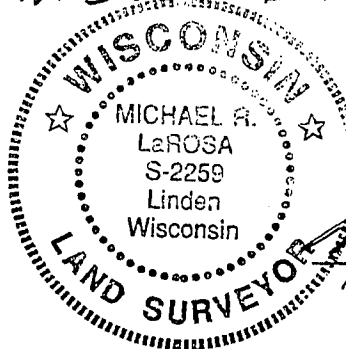
Show info such as: History of corner, with reference to Vol. and pg., dates, surveyor; exact description of monument replaced; if location computed, by taped or EDM traverse; landowner, remarks, etc.



LOCATION
 (Indicated by "X")

- FOUND PERPETUATED LOCATION
- OBSOLETE EVIDENCE LOCATION
- LOST CORNER (RESTORED BY PROPORTIONATE METHODS)

A P.K. nail was placed in line with the center line of County Trunk Highway D to the south and in line with a fence line to the east as called for in Plat of surveys by D.C. Dixon dated 9/8/1977 and Homer Ralph dated 12/29/1970 and verified by its relationships to surrounding corners. (SEE PLAT OF SURVEY FOR ARNIE ROBER, (THIS DATE) DAVID RUNDALL AND PAT GRISWOLD FOR SECTION SUMMARY)



CERTIFIED CORRECT TO THE BEST OF MY KNOWLEDGE AND BELIEF

Michael R. LaRosa
 Registered Land Surveyor

DATE: 11/6/1995

TIE SKETCH

Show at least three (4) ties and monument

