

51045

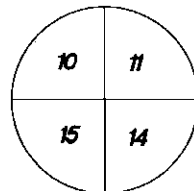
U.S. PUBLIC LAND SURVEY MONUMENT RECORD

Wisconsin Department of Transportation

DT1291 2/2006

County Name <b>Grant</b>		Name of <input checked="" type="checkbox"/> Township, <input type="checkbox"/> City, <input type="checkbox"/> Village <b>Clifton</b>	
Surveyor Name <b>Michael T. Schinke</b>			
Address, City, State, ZIP Code <b>7501 College Blvd Suite 101 Overland Park, KS 66210</b>			
Y (Northing) <b>333812.347</b>	X (Easting) <b>1843225.602</b>	Latitude	Longitude
Project ID <b>0020543.00</b>		Coordinate ID	

T. 5 N. - R. 1 W  
4<sup>th</sup> Principal Meridian  
Corner **45**

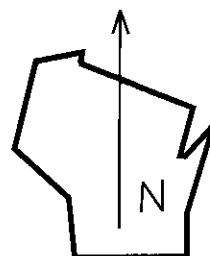


HORIZONTAL DATUM UNITS

- NAD 27
- NAD 83 (1991)
- NAD 83 (1997)
- Other- NAD 83 (2011)
- English
- Metric

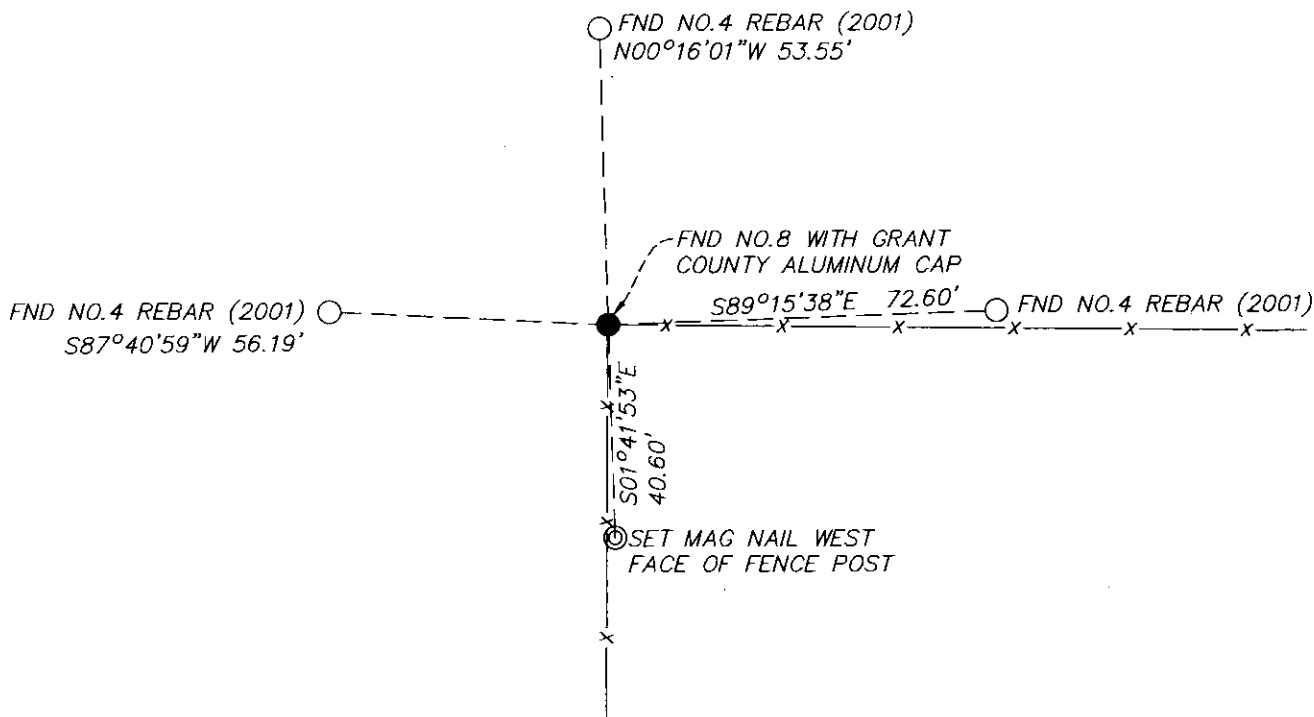
COORDINATE SYSTEM

- Geodetic
- State Plane South Zone
- County



Location Diagram, showing corner identification name, bearing and distance references to at least four witness monuments, fence or occupational lines, centerlines of roads, and other site details for reference. Also, show the bearings and distances between the witness monuments.

Northeast Corner of Section 15, Township 5 North, Range 1 West, Grant County, Wisconsin



Indicate fd. = found or pl. = placed in the diagram below  
Bearings used in the location sketch and basis for monument location are assumed, unless as noted.  
Monumentation Legend / Description of Corner and Witness Monuments.

- ⊙ SET MAG NAIL
- FND NO.4 REBAR
- NO.8 REBAR WITH GRANT COUNTY ALUMINUM CAP

If applicable, show any discrepancy between the location of the corner as restored or re-established and the location of that corner as previously restored or re-established by bearing and distance. Also, show the bearings and distances between the previous corner and at least two of the witness monuments.

Basis for Monument Location

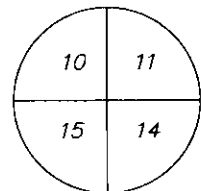
1. Describe any record evidence, monument evidence, occupational evidence or any other material evidence including traverse measurements that you considered, and whether the monument was found or placed. Explain below, be specific, and attach a separate sheet if necessary.
  
2. Was the corner.
  - a. found perpetuate
  - b. restored through acceptance of obliterated evidence.
  - c. relocated by witness testimony, or
  - d. accepted as a re-monumented corner of record and maintained with additional monumentation?
  
3. Was the corner re-established through last corner proportionate methods? If so, show the method, including the directions and distances to other public land survey corners used as evidence or used in determining the corner location.

1. Westwood Professional Services searched the area and found a 1" rebar with a 3 1/4" Grant County Aluminum Cap at fence corner running south and east. Also found 3 of 4 ties per 2001 Larry Austin Corner Record and found monument also agrees with 2000 and 2005 surveys by Larry Austin. Accepting as corner location as best available evidence and set 1 additional tie.

2. D

3. NO

T. 5 N. R. 1 W  
 4 th Principal Meridian  
 Corner 45



**Certification**

I, Michael T. Schinke, certify that the corner location shown on the record was determined by me or under my direction and control and that the U.S. Public Land Survey Monument Record is correct and complete to the best of my knowledge and belief, in accordance with Chapter A-E 7.08 of the Wisconsin Administration Code.

Section Control Data Sheets have been filed in the County Surveyor's office, showing final measurements by direction and distance between all remonumented corners. Section Control information is referenced by the following.

Date	Project ID 0020543.00	Sheet(s) 2 of 2
------	--------------------------	--------------------



x *Michael T Schinke*

04/23/2020

(Registered Land Surveyor Signature and Number)

Date

# GRANT COUNTY CERTIFIED LAND CORNER

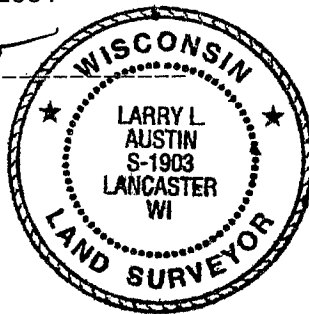
CORNER NUMBER 45

**CERTIFICATE:**

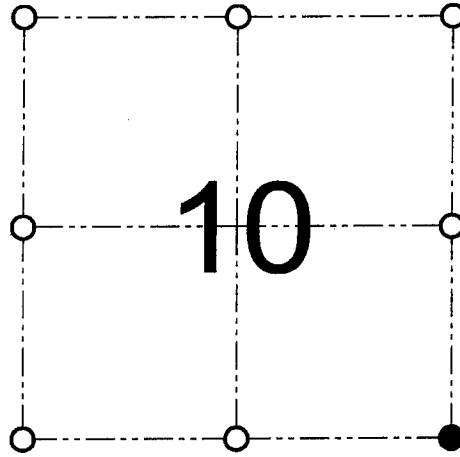
I, Larry L. Austin, do hereby certify that on the 5th day of December, 2000, I found evidence of the Southeast corner of Section 10, Town 5 North, Range 1 West, of the 4th Principal Meridian, and I re-established said corner according to the Wisconsin statutes as shown and described hereon.

Dated this 29th day of January, 2001

*Larry L. Austin*  
Larry L. Austin S-1903



SEAL



● = CORNER LOCATION

SOUTHEAST CORNER OF  
SECTION 10, T 5 N R 1 W  
TOWN OF CLIFTON

**HISTORY OF ORIGINAL CORNER ESTABLISHMENT:**

Corner was originally set in 1832 by Harvey Parke. In 1840 Geo Stuntz found the original corner. In 1873 Geo McFall tied to the corner. In 1877 Barber set a stone at this location.

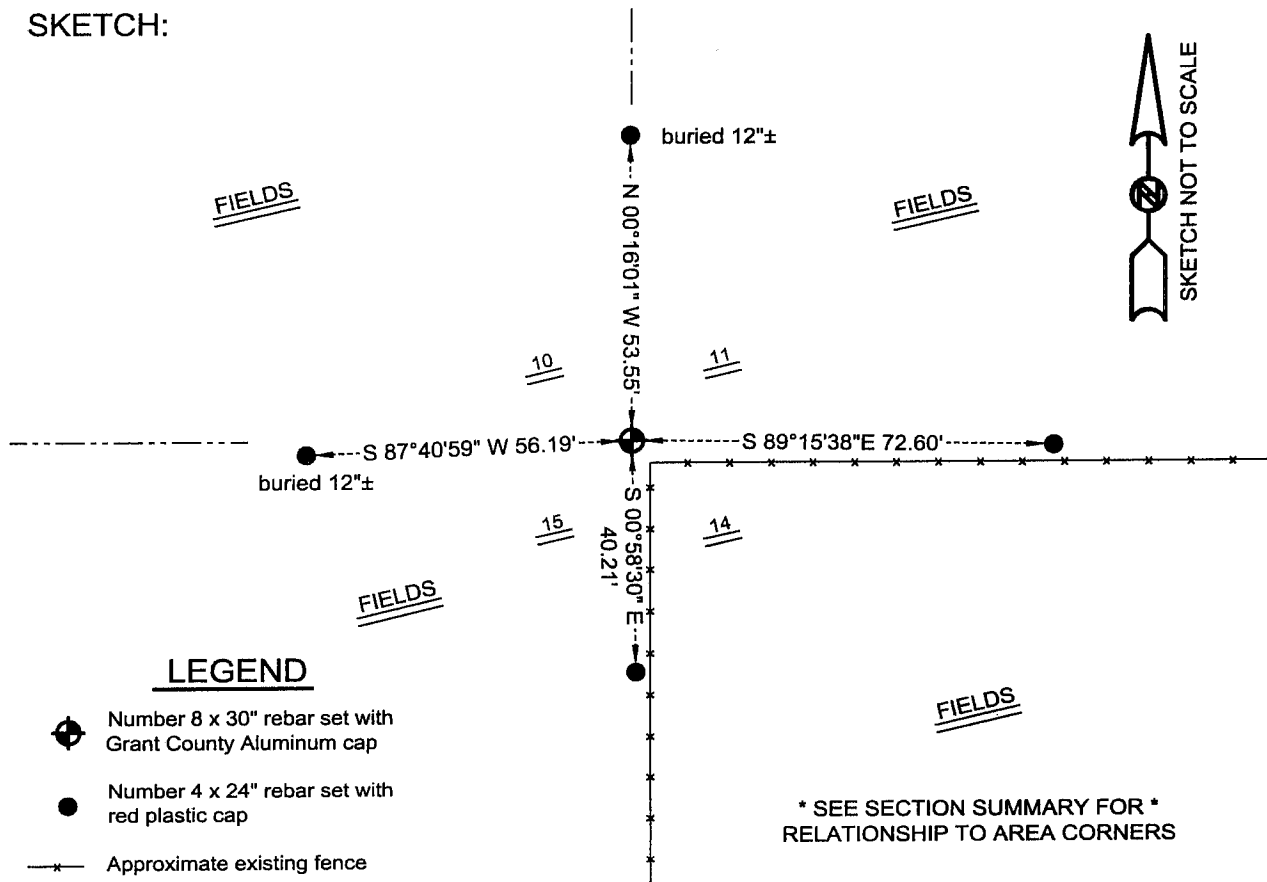
**DESCRIPTION OF CORNER EVIDENCE FOUND:**

I was unable to locate the stone. I found an occupied fence corner. I accepted it's location after an EDM & GPS traverse of the area.

**DESCRIPTION OF CORNER AND WITNESS MONUMENTS, references and accessories used to perpetuate the original or re-established location of this corner**

WITNESS TO THE CORNER LOCATION: TIM FAUVER & SHELBY BLINDERT & BOBBY SEDGWICK

**SKETCH:**



**AUSTIN ENGINEERING, LLC**  
4211 HWY 81 E, LANCASTER, WI 53813  
PHONE 608-723-6363 FAX 608-723-6702

FIELDBOOK: SDR33, 2038  
G:\T5NR1W\36B  
C:\SC14\SWA\TIE\T5NR1W\45

DRAWN BY: SW AUSTIN  
APPROVED: LL AUSTIN  
CREW: BS - SB - SA - TF