

U.S. PUBLIC LAND SURVEY MONUMENT RECORD - GRANT COUNTY, WI

Section 14, Town 5 North Range 1 West, Town of Clifton (a)

NOTE: This form is intended and designed to fulfill all requirements of the Wisconsin Administrative Code Chapter A-E 7.08, U.S. Public Land Survey Monument Record (3) (a) (b) (c) (d) (e) (f) (g) (h) (i).

CERTIFICATE: (i)

I, Aaron J. Austin, Wisconsin Professional Land Surveyor, do hereby certify that the corner location on this record was determined by me and/or under my direct supervision and that this U.S. Public Land Survey Monument Record is correct and complete to the best of my knowledge and belief.

Dated this 9th day of September, 2019

Aaron J. Austin

Aaron J. Austin, S-2922



⊕ = CORNER LOCATION

Grant County Coordinates:

NAD 83 (2011)

Northing: 548,197.51

Easting: 886,720.88

HISTORY OF CORNER ESTABLISHMENT:

Original corner was set in 1832 by Harvey Parke.

Larry Austin set a 3/4" Rebar with a Grant County Aluminum Cap and prepared a Survey Monument Record dated 4-6-1997.

DESCRIPTION OF CORNER EVIDENCE FOUND: (b) (f) (g) (h)

I set a 1 1/4" Rebar from the distances of two existing witness corners Larry set. I set two witness corners and verified the Monument's location with G.P.S. and E.D.M. methods.

DESCRIPTION OF CORNER AND WITNESS MONUMENTS, references and accessories used to perpetuate the original or re-established location of this corner. (c) (d) (e)

Witnesses to corner location Shane Austin, Owen Austin.

Drawn by: Owen Austin.

SKETCH:

LEGEND

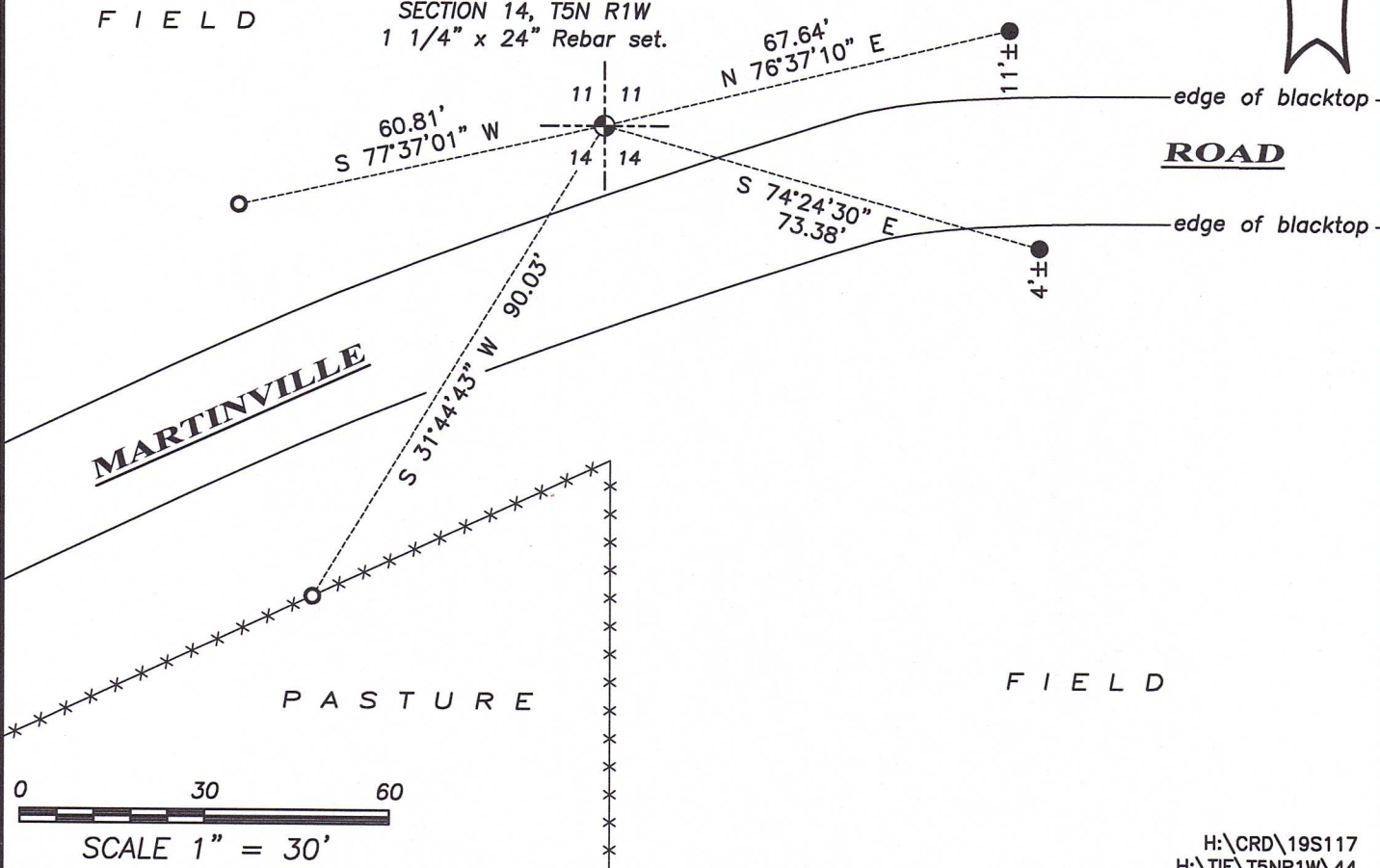
- ⊕ Section Corner—as designated
- 1/2" rebar found
- 3/4" x 18" rebar set
- x-x-x- Existing fence

F I E L D



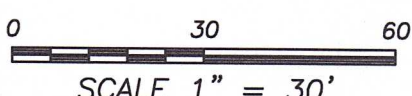
F I E L D

NORTH 1/4 CORNER
SECTION 14, T5N R1W
1 1/4" x 24" Rebar set.



edge of blacktop
ROAD
edge of blacktop

F I E L D



SCALE 1" = 30'

51044

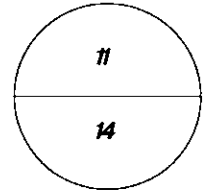
U.S. PUBLIC LAND SURVEY MONUMENT RECORD

Wisconsin Department of Transportation

DT1291 2/2006

County Name Grant		Name of <input checked="" type="checkbox"/> Township, <input type="checkbox"/> City, <input type="checkbox"/> Village Clifton	
Surveyor Name Michael T. Schirke			
Address, City, State, ZIP Code 7501 College Blvd Suite 101 Overland Park, KS 66210			
Y (Northing) 333766.281	X (Easting) 1845908.942	Latitude	Longitude
Project ID 0020543.00		Coordinate ID	

T. 5 N. - R. 1 W
4th Principal Meridian
Corner **44**

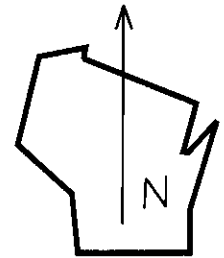


HORIZONTAL DATUM UNITS

- NAD 27
- NAD 83 (1991)
- NAD 83 (1997)
- Other- NAD 83 (2011)
- English
- Metric

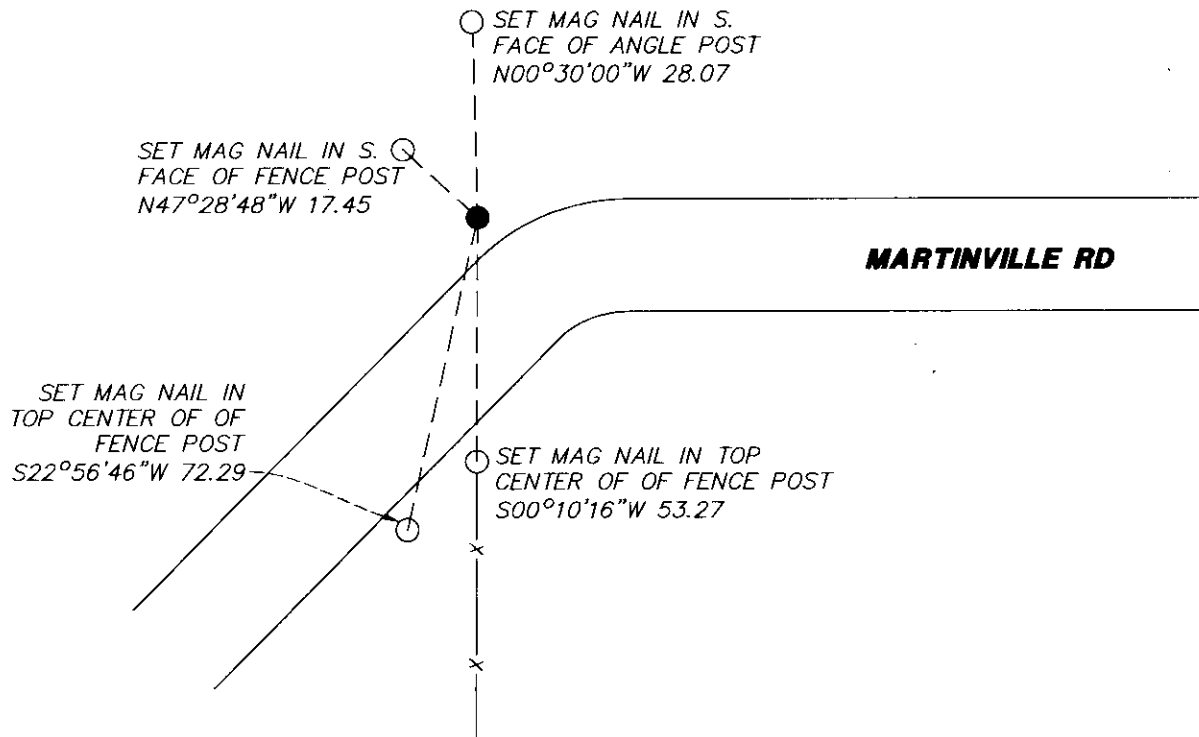
COORDINATE SYSTEM

- Geodetic
- State Plane South Zone
- County



Location Diagram, showing corner identification name, bearing and distance references to at least four witness monuments, fence or occupational lines, centerlines of roads, and other site details for reference. Also, show the bearings and distances between the witness monuments.

North Quarter Section 14, Township 5 North, Range 1 West, Grant County, Wisconsin



Indicate fd. = found or pl. = placed in the diagram below
Bearings used in the location sketch and basis for monument location are assumed, unless as noted.
Monumentation Legend / Description of Corner and Witness Monuments.

- SET MAG NAIL
- FND NO. 10 REBAR

If applicable, show any discrepancy between the location of the corner as restored or re-established and the location of that corner as previously restored or re-established by bearing and distance. Also, show the bearings and distances between the previous corner and at least two of the witness monuments.

Basis for Monument Location

1. Describe any record evidence, monument evidence, occupational evidence or any other material evidence including traverse measurements that you considered, and whether the monument was found or placed. Explain below, be specific, and attach a separate sheet if necessary.

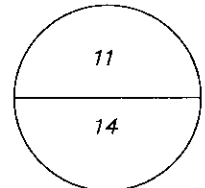
2. Was the corner.
 - a. found perpetuate
 - b. restored through acceptance of obliterated evidence.
 - c. relocated by witness testimony, or
 - d. accepted as a re-monumented corner of record and maintained with additional monumentation?

3. Was the corner re-established through last corner proportionate methods? If so, show the method, including the directions and distances to other public land survey corners used as evidence or used in determining the corner location.
 1. Westwood Professional Services searched the area and found a #10 rebar. Agrees with distance to N1/4 corner of Section 11 and distance to computed 1/16 corner east per 1996 Larry Austin Survey. Accepting as corner location and set 4 ties.

 2. D

 3. NO

T. 5 N. R. 1 W
4 th Principal Meridian
Corner 44



Certification

I, Michael T. Schinke, certify that the corner location shown on the record was determined by me or under my direction and control and that the U.S. Public Land Survey Monument Record is correct and complete to the best of my knowledge and belief, in accordance with Chapter A-E 7.08 of the Wisconsin Administration Code.

Section Control Data Sheets have been filed in the County Surveyor's office, showing final measurements by direction and distance between all re-monumented corners. Section Control information is referenced by the following.

Date	Project ID 0020543.00	Sheet(s) 2 of 2
------	--------------------------	--------------------



x Michael T Schinke
(Registered Land Surveyor Signature and Number)

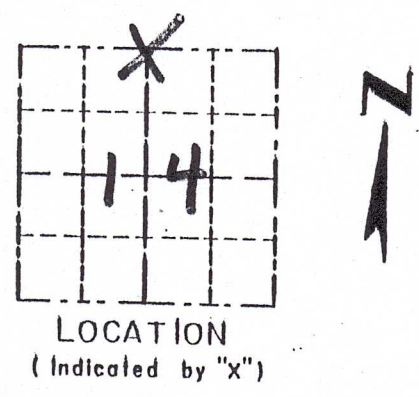
04/23/2020
Date

GRANT COUNTY

Survey Monument Record

TYPE OF MONUMENT 3/4" X 24" IRON BAR SET
 STATE PLANE COORDINATES: N W/ CAP
 E _____
 ELEVATION - M.S.L. DATUM: _____
 THETA ANGLE: _____
 FIELD BOOK: 96-02
 PAGE (10)

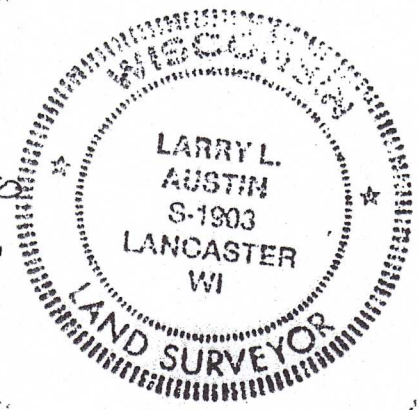
CORNER NO. 44
 SECTION 14
 TOWN 5N
 RANGE 1W



BASIS FOR MONUMENT LOCATION

(Use reverse side if necessary)

CORNER SET IN 1832 BY HARVEY PARKE. ORIGINAL CORNER WAS UNRECOVERABLE, IN SEAL: 1877 JOEL BARBER SET A LARGE ROCK. THE ROCK WAS UNRECOVERABLE. IN 1995 LARRY SCHMIT SAID HE WENT TO THE OCCUPIED 1/4 CORNER TO SET THE NE CORNER OF SAID SECTION. I ACCEPTED THE LOCATION OF A NORTH / SOUTH FENCE AND THE PROJECTION OF A CENTER LINE FROM THE EAST. VERIFIED ITS LOCATION USING EDM METHODS.



CERTIFIED CORRECT

Larry L. Austin
 Registered Land Surveyor

DATE: 4/6/97

TIE SKETCH

Show at least three (3) ties and monument

LEGEND

- ⊕ 3/4" X 24" IRON BAR SET W/ CAP
- 1/2" X 12" IRON BAR SET
- EXISTING FENCE

