

51041

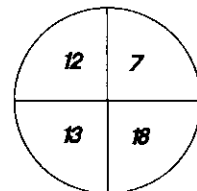
U.S. PUBLIC LAND SURVEY MONUMENT RECORD

Wisconsin Department of Transportation

DT1291 2/2006

County Name Grant		Name of <input checked="" type="checkbox"/> Township, <input type="checkbox"/> City, <input type="checkbox"/> Village Clifton	
Surveyor Name Michael T. Schinke			
Address, City, State, ZIP Code 7501 College Blvd Suite 101 Overland Park, KS 66210			
Y (Northing) 333646.528	X (Easting) 1853907.522	Latitude	Longitude
Project ID 0020543.00		Coordinate ID	

T. 5 N. - R. 1 W
4 th Principal Meridian
Corner 41



HORIZONTAL DATUM UNITS

- NAD 27
- NAD 83 (1991)
- NAD 83 (1997)
- Other - NAD 83 (2011)
- English
- Metric

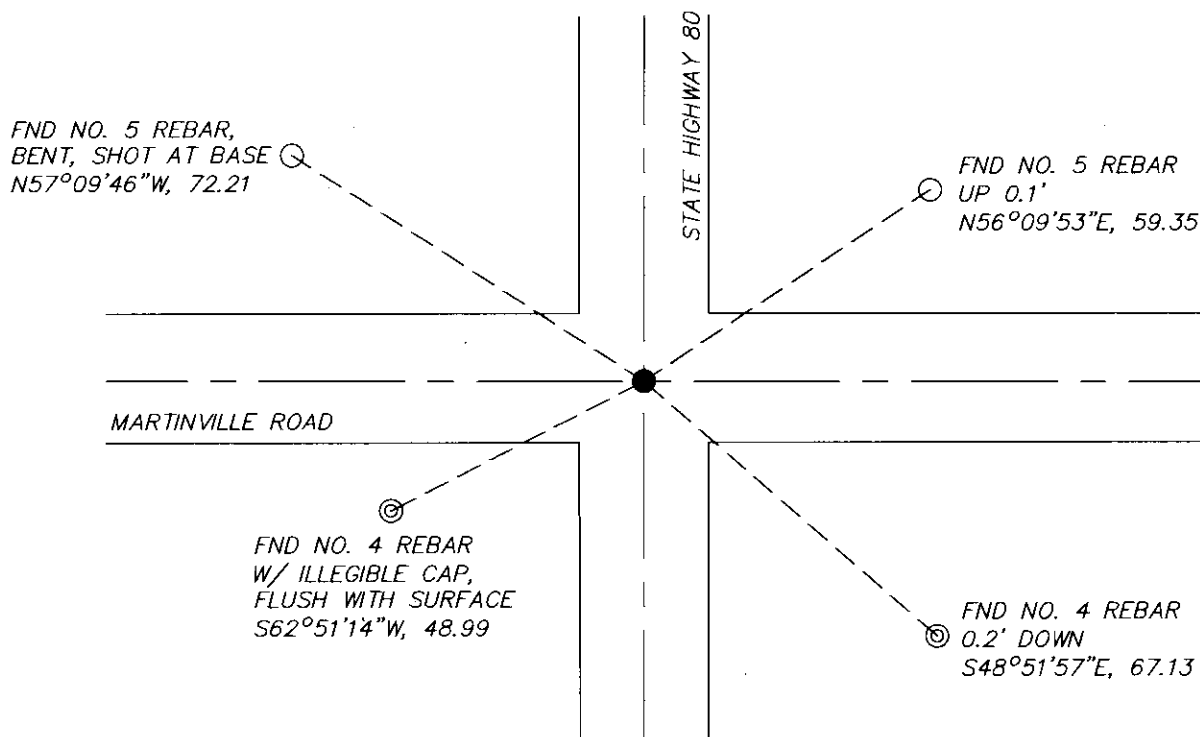
COORDINATE SYSTEM

- Geodetic
- State Plane South Zone
- County



Location Diagram, showing corner identification name, bearing and distance references to at least four witness monuments, fence or occupational lines, centerlines of roads, and other site details for reference. Also, show the bearings and distances between the witness monuments.

Northeast Corner of Section 13, Township 5 North, Range 1 West, Grant County, Wisconsin



Indicate fd. = found or pl. = placed in the diagram below
Bearings used in the location sketch and basis for monument location are assumed, unless as noted.
Monumentation Legend / Description of Corner and Witness Monuments.

- ⊙ FND NO. 4 REBAR
- FND NO. 5 REBAR
- FND COTTON GIN SPIKE, FLUSH WITH SURFACE

If applicable, show any discrepancy between the location of the corner as restored or re-established and the location of that corner as previously restored or re-established by bearing and distance. Also, show the bearings and distances between the previous corner and at least two of the witness monuments.

Basis for Monument Location

1. Describe any record evidence, monument evidence, occupational evidence or any other material evidence including traverse measurements that you considered, and whether the monument was found or placed. Explain below, be specific, and attach a separate sheet if necessary.

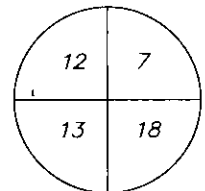
2. Was the corner.
 - a. found perpetuate
 - b. restored through acceptance of obliterated evidence.
 - c. relocated by witness testimony, or
 - d. accepted as a re-monumented corner of record and maintained with additional monumentation?

3. Was the corner re-established through last corner proportionate methods? If so, show the method, including the directions and distances to other public land survey corners used as evidence or used in determining the corner location.
 1. Westwood Professional Services searched the area and found the cotton gin spindle as described on the 2010 Austin survey. Monument fits distances to the 2010 survey and ties previous monument records. The origin of the cotton gin is unknown but surrounding information along State Hwy 80 has had cotton gin spindles set in the exact location of the previous monument after road construction.

 2. D

 3. NO

T. 5 N. R. 1 W
4 th Principal Meridian
Corner 41



Certification

I, Michael T. Schinke, certify that the corner location shown on the record was determined by me or under my direction and control and that the U.S. Public Land Survey Monument Record is correct and complete to the best of my knowledge and belief, in accordance with Chapter A-E 7.08 of the Wisconsin Administration Code.

Section Control Data Sheets have been filed in the County Surveyor's office, showing final measurements by direction and distance between all re-monumented corners. Section Control information is referenced by the following.

Date	Project ID	Sheet(s)
	0020543.00	2 of 2



x Michael T Schinke

(Registered Land Surveyor Signature and Number)

04/23/2020

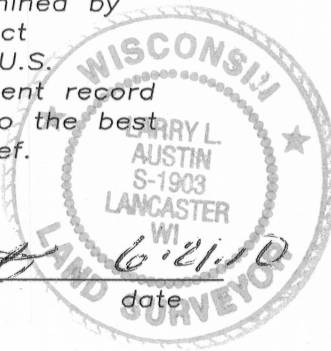
Date

U.S. PUBLIC LAND SURVEY MONUMENT RECORD

Section 13, Town 5 North Range 1 West, Town of Clifton, Grant County, Wisconsin

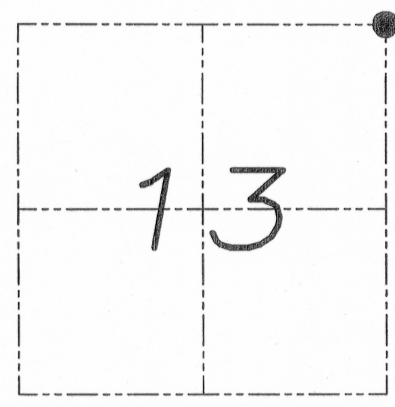
CERTIFICATE

I, Larry L. Austin, do hereby certify that the corner location on this record was determined by me and/or under my direct supervision and that this U.S. public land survey monument record is correct and complete to the best of my knowledge and belief.



Larry L. Austin
 Larry L. Austin, S-1903

date



● = CORNER LOCATION

HISTORY OF CORNER

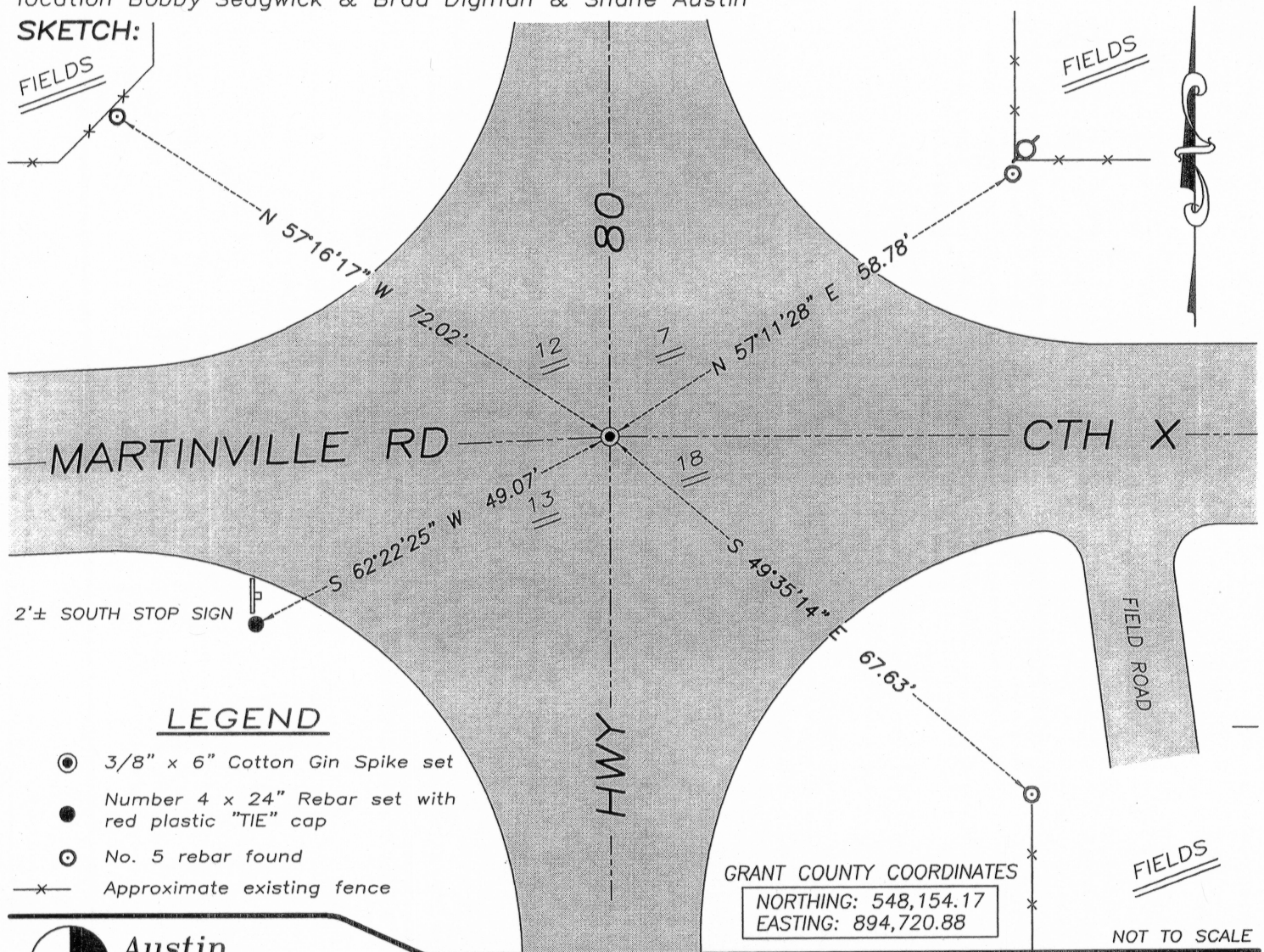
Corner was originally set in 1832 by Lyon. In 2007 Halverson found a 1.25" iron pipe and accepted it at this location. No other record of the corner was found.

CORNER EVIDENCE FOUND

I measured to the 1.25" iron pipe prior to road construction. I reset the corner after road construction and tied it as shown below. Verified this location using EDM & GPS methods.

DESCRIPTION OF CORNER AND WITNESS MONUMENTS, references and accessories used to perpetuate the original or re-established location of this corner. Witnesses to monument location Bobby Sedgwick & Brad Digman & Shane Austin

SKETCH:



LEGEND

- 3/8" x 6" Cotton Gin Spike set
- Number 4 x 24" Rebar set with red plastic "TIE" cap
- No. 5 rebar found
- x- Approximate existing fence

GRANT COUNTY COORDINATES
 NORTHING: 548,154.17
 EASTING: 894,720.88

NOT TO SCALE

Austin Engineering LLC
 4211 HWY 81 E, LANCASTER, WI 53813
 PHONE 608-723-6363 FAX 608-723-6702

JOB NUMBER 08S249-WIDOT
 FIELDBOOK: TDSR, 2810-B
 G:\GRANTDOT\T5NR1W
 H:\TIE\T5NR1W\41
 DRAWN BY: SW AUSTIN
 APPROVED: LL AUSTIN

JUN 28 2010