

51039

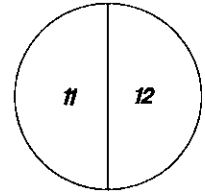
**U.S. PUBLIC LAND SURVEY MONUMENT RECORD**

Wisconsin Department of Transportation

DT1291 2/2006

County Name <b>Grant</b>		Name of <input checked="" type="checkbox"/> Township, <input type="checkbox"/> City, <input type="checkbox"/> Village <b>Clifton</b>	
Surveyor Name <b>Michael T. Schinke</b>			
Address, City, State, ZIP Code <b>7501 College Blvd Suite 101 Overland Park, KS 66210</b>			
Y (Northing) <b>336391.628</b>	X (Easting) <b>1848566.587</b>	Latitude	Longitude
Project ID <b>0020543.00</b>		Coordinate ID	

T. 5 N. - R. 1 W  
4 th Principal Meridian  
Corner **39**

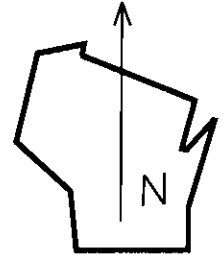


**HORIZONTAL DATUM UNITS**

- NAD 27
- NAD 83 (1991)
- NAD 83 (1997)
- Other - NAD 83 (2011)
- English
- Metric

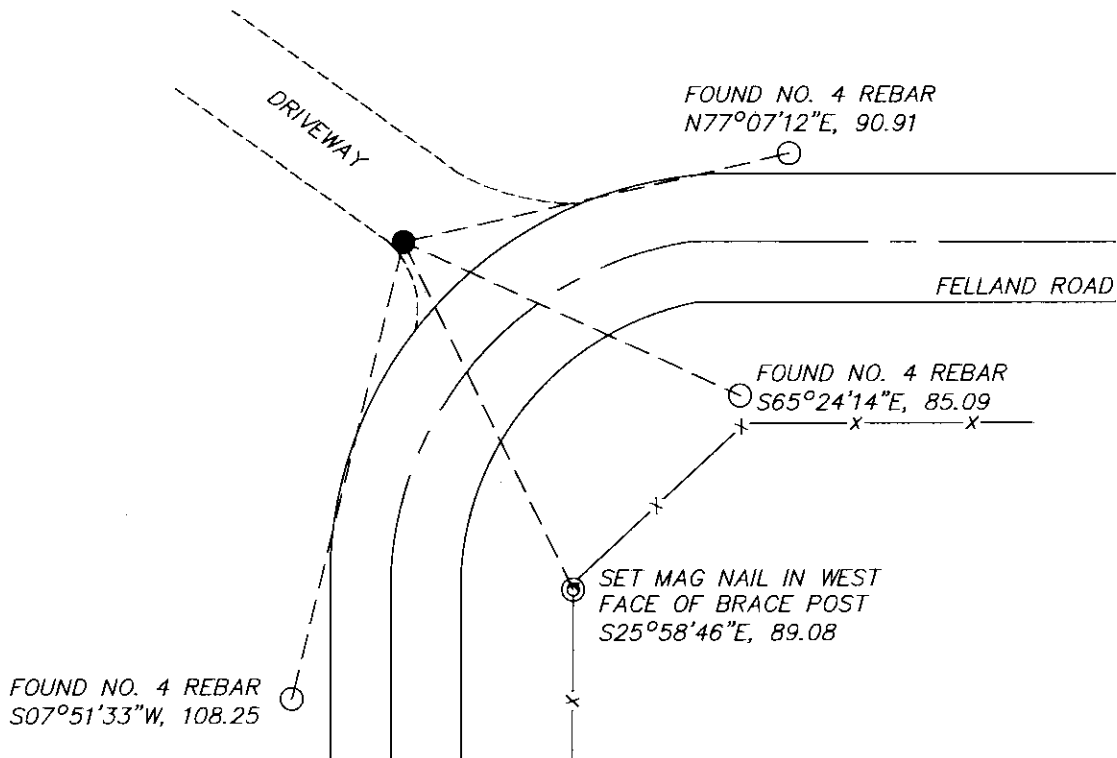
**COORDINATE SYSTEM**

- Geodetic
- State Plane South Zone
- County



Location Diagram, showing corner identification name, bearing and distance references to at least four witness monuments, fence or occupational lines, centerlines of roads, and other site details for reference. Also, show the bearings and distances between the witness monuments.

**East Quarter Section 11, Township 5 North, Range 1 West, Grant County, Wisconsin**



Indicate fd. = found or pl. = placed in the diagram below  
Bearings used in the location sketch and basis for monument location are assumed, unless as noted.  
Monumentation Legend / Description of Corner and Witness Monuments.

- FND NO.6 REBAR
- ⊙ SET MAG NAIL
- FOUND 3" GRANT COUNTY ALUMINUM MONUMENT

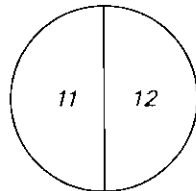
If applicable, show any discrepancy between the location of the corner as restored or re-established and the location of that corner as previously restored or re-established by bearing and distance. Also, show the bearings and distances between the previous corner and at least two of the witness monuments.

Basis for Monument Location

1. Describe any record evidence, monument evidence, occupational evidence or any other material evidence including traverse measurements that you considered, and whether the monument was found or placed. Explain below, be specific, and attach a separate sheet if necessary.
  
2. Was the corner.
  - a. found perpetuate
  - b. restored through acceptance of obliterated evidence.
  - c. relocated by witness testimony, or
  - d. accepted as a re-monumented corner of record and maintained with additional monumentation?
  
3. Was the corner re-established through lost corner proportionate methods? If so, show the method, including the directions and distances to other public land survey corners used as evidence or used in determining the corner location.

1. Westwood Professional Services searched the area and found a bar with 3" Grant County Aluminum Cap and found 3 of 4 ties per Austin 2006 Corner Record and 1 tie of unknown origin. Fits single proportion position and 2006 Corner Record, accepting as corner location.
2. D
3. NO

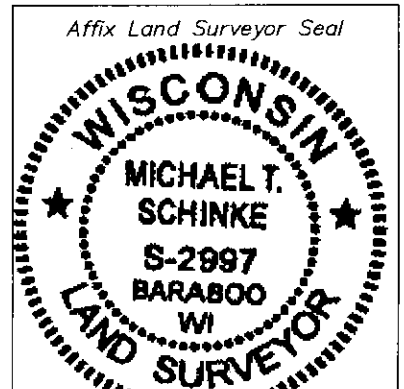
T. 5 N. R. 1 W  
 4 th Principal Meridian  
 Corner 39



Certification

I, Michael T. Schinke, certify that the corner location shown on the record was determined by me or under my direction and control and that the U.S. Public Land Survey Monument Record is correct and complete to the best of my knowledge and belief, in accordance with Chapter A-E 7.08 of the Wisconsin Administration Code.

Section Control Data Sheets have been filed in the County Surveyor's office, showing final measurements by direction and distance between all remonumented corners. Section Control information is referenced by the following.



Date	Project ID 0020543.00	Sheet(s) 2 of 2
------	--------------------------	--------------------

x Michael T Schinke  
 (Registered Land Surveyor Signature and Number)

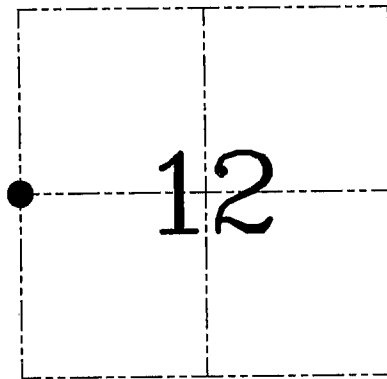
04/23/2020  
 Date

**U.S. PUBLIC LAND SURVEY MONUMENT RECORD – GRANT COUNTY, WI**

**Section 12, Town 5 North Range 1 West, Town of Clifton**

CERTIFICATE

I, Larry L. Austin, do hereby certify that the corner location on this record was determined by me and/or under my direct supervision and that this U.S. public land survey monument record is correct and complete to the best of my knowledge and belief.



*Larry L. Austin* 12:30.06  
 date  
 LARRY L. AUSTIN S-5908903  
 LANCASTER WI  
 LAND SURVEYOR

HISTORY OF CORNER ESTABLISHMENT

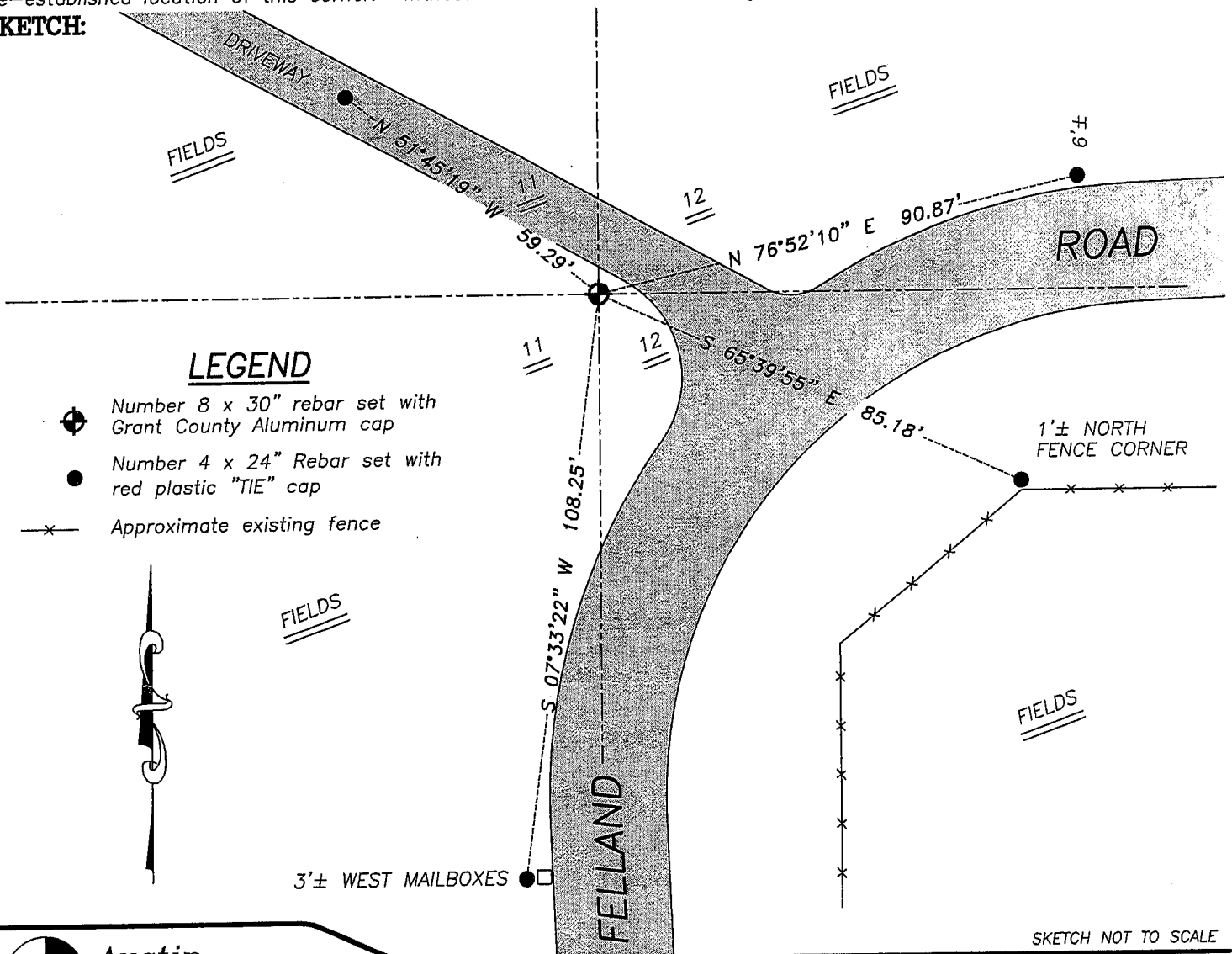
Corner was originally set in 1832 by Parke.  
 No recent record of the corner was found.

DESCRIPTION OF CORNER EVIDENCE FOUND

I reset the corner proportionately and on-line between the Northwest and Southwest corners of Section 12. Verified this corner using EDM & GPS methods.

DESCRIPTION OF CORNER AND WITNESS MONUMENTS, references and accessories used to perpetuate the original or re-established location of this corner. Witnesses to corner location Bobby Sedgwick & Brad Digman & Shane Austin

**SKETCH:**



SKETCH NOT TO SCALE

**Austin Engineering LLC**  
 4211 HWY 81 E, LANCASTER, WI 53813  
 PHONE 608-723-6363 FAX 608-723-6702

JOB NUMBER 06S229  
 FIELDBOOK: TDSR, 2609  
 G:\T5NR1W\36B  
 H:\TIE\T5NR1W\39

DRAWN BY: SW AUSTIN  
 APPROVED: LL AUSTIN