

U.S. PUBLIC LAND SURVEY MONUMENT RECORD - GRANT COUNTY, WI

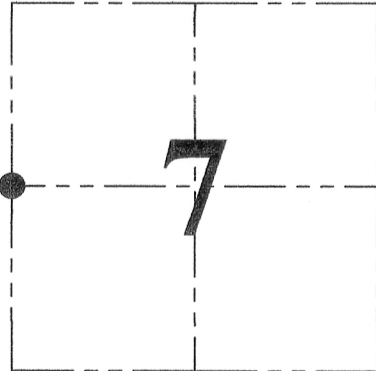
Section 7, Town 5 North Range 1 West, Town of Clifton

CERTIFICATE:

I, Aaron J. Austin, do hereby certify that the corner location on this record was determined by me and/or under my direct supervision and that this U.S. Public Land Survey Monument Record is correct and complete to the best of my knowledge and belief.

Dated this 3rd day of July, 2014.

Aaron J. Austin
 Aaron J. Austin, S-2922



● = CORNER LOCATION

HISTORY OF CORNER ESTABLISHMENT:

Corner was not set with Original Survey.
 1889 Herbert Goold set the corner on a survey filed in Book D, Page 170.
 2001 Larry Austin set a No. 8 rebar with a Grant County Aluminum Cap as shown on a tie sheet filed for the East 1/4 corner, Section 12, T5N R2W.
 No other record was found for this corner.

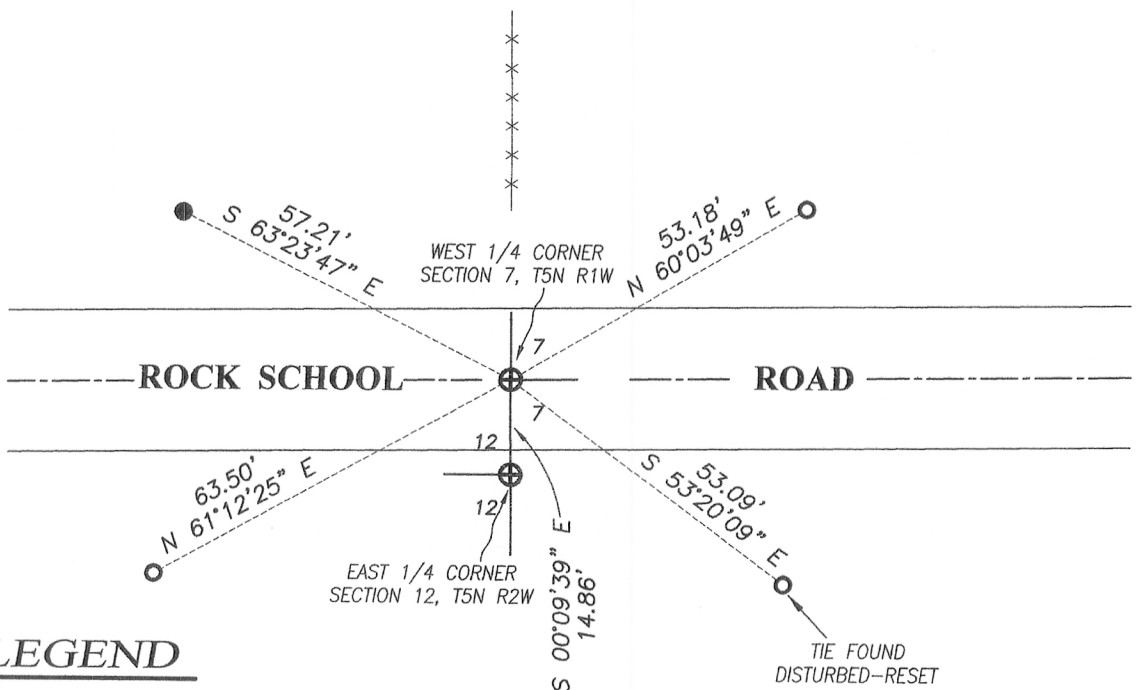
DESCRIPTION OF CORNER EVIDENCE FOUND:

I found a No. 8 rebar with a Grant County Aluminum Cap. I used two ties from the East 1/4 corner of Section 12, T5N R2W, set one tie and reset a disturbed tie. I verified this location by E.D.M. and G.P.S. methods.

DESCRIPTION OF CORNER AND WITNESS MONUMENTS, references and accessories used to perpetuate the original or re-established location of this corner. Witnesses to corner location Shane Austin.

SKETCH:

Bearings referenced to the Grant County Coordinate System (2011 adjustment) which was determined by G.P.S. observation.



LEGEND

- ⊕ No. 8 rebar found with Grant County Aluminum Cap
- Number 4 x 24" Rebar set with red plastic "TIE" cap
- Number 4 Rebar found
- x-x- Existing fence



SCALE 1" = 30'



Austin Engineering LLC
 austinengineeringllc.com

4211 HWY 81 E, LANCASTER, WI 53813
 PHONE: 608-723-6363 FAX: 608-723-6702

JOB NO: 14s106
 G:\14s055
 H:\TIE\T5NR1W\34

FIELDBOOK: TDSR
 DRAWN BY: AJ AUSTIN
 CREW: SW AUSTIN