

U.S. PUBLIC LAND SURVEY MONUMENT RECORD - GRANT COUNTY, WI

Section 8, Town 5 North Range 1 West, Town of Clifton(a)

NOTE: This form is intended and designed to fulfill all requirements of the Wisconsin Administrative Code Chapter A-E 7.08, U.S. Public Land Survey Monument Record (3) (a) (b) (c) (d) (e) (f) (g) (h) (i).

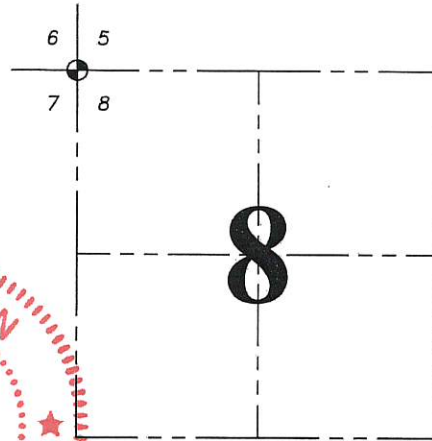
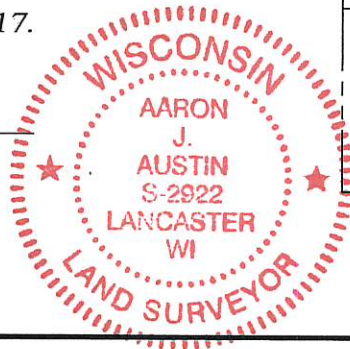
Corner No. 031

CERTIFICATE: (i)

I, Aaron J. Austin, Wisconsin Professional Land Surveyor, do hereby certify that the corner location on this record was determined by me and/or under my direct supervision and that this U.S. Public Land Survey Monument Record is correct and complete to the best of my knowledge and belief.

Dated this 13th day of January, 2017.

Aaron J. Austin
 Aaron J. Austin, S-2922



⊕ = CORNER LOCATION

HISTORY OF CORNER ESTABLISHMENT:

Original corner was set in 1832 by Henry Parke.
 Larry Austin reset the corner on a Survey dated 8-23-1993 filed in Book T, Page 76.

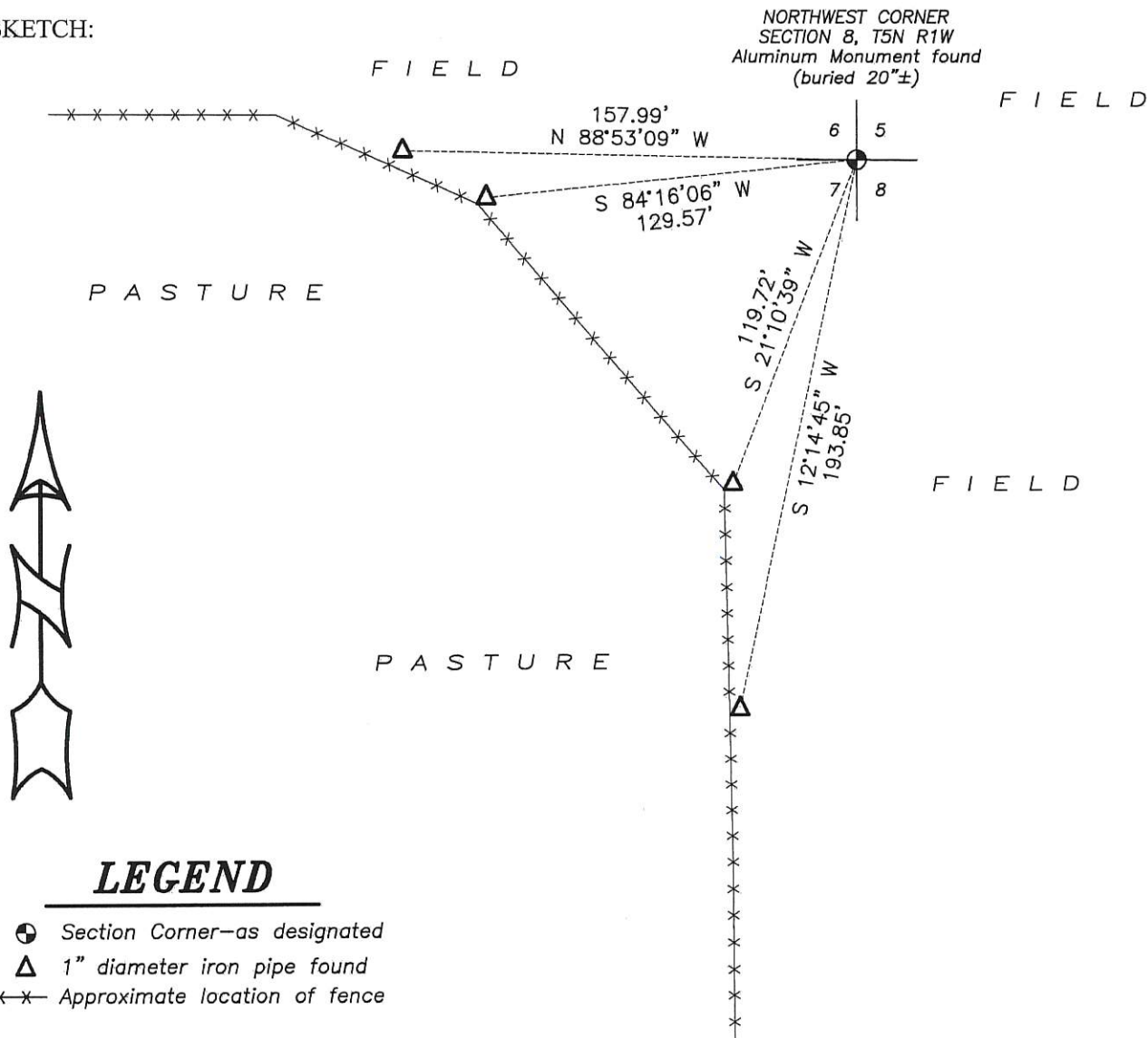
DESCRIPTION OF CORNER EVIDENCE FOUND: (b) (f) (g) (h)

After communicating with Larry Austin, he did find an unfiled Survey Monument Record in his file. Larry stated that he reset the corner by proportionate measurements. I found the Aluminum Monument set by Larry Austin and all four ties. Corner location was verified with G.P.S. and E.D.M. methods.

DESCRIPTION OF CORNER AND WITNESS MONUMENTS, references and accessories used to perpetuate the original or re-established location of this corner. (c) (d) (e)

Witnesses to corner location Shane Austin and Eric Macke.

SKETCH:



LEGEND

- ⊕ Section Corner—as designated
- △ 1" diameter iron pipe found
- x-x- Approximate location of fence

0 60 120

SCALE 1" = 60'