

GRANT COUNTY
U.S. PUBLIC LAND SURVEY MONUMENT RECORD

(E) DESCRIBE ANY MATERIAL DISCREPANCY BETWEEN THE LOCATION OF THE CORNER AS RESTORED OR REESTABLISHED AND THE LOCATION OF THAT CORNER AS PREVIOUSLY RESTORED OR REESTABLISHED BY DISTANCE AND DIRECTION. SHOW THE DISCREPANCY ON THE PLAN VIEW DRAWING UNDER (D), ABOVE. SHOW THE DISTANCES BETWEEN THE CORNER AS PREVIOUSLY RESTORED OR REESTABLISHED AND (1) THE CORNER AS RESTORED OR REESTABLISHED, AND (2) TO AT LEAST 2 OF THE WITNESS MONUMENTS SHOWN ON THE DRAWING IN (D) ABOVE.

N/A

(F) WAS THE CORNER RESTORED THROUGH ACCEPTANCE OF (1) AN OBLITERATED EVIDENCE LOCATION, OR (2) A FOUND PERPETUATED LOCATION?

FOUND AT PERPETUATED LOCATION

(G&H) WAS THE CORNER REESTABLISHED THROUGH LOST CORNER PROPORTIONATE METHODS? IF SO, SHOW THE METHOD, INCLUDING THE DIRECTIONS AND DISTANCES TO OTHER PUBLIC LAND SURVEY CORNERS USED AS EVIDENCE OR USED FOR PROPORTIONING IN DETERMINING THE CORNER LOCATION.

N/A

1. CORNER HISTORY: ORIGINAL POST SET IN 1832 BY HENRY PARKE.
2. IN 1848, BOOK B, PAGE 106, GEORGE STINZ FOUND THE ORIGINAL CORNER.
3. IN 1889, BOOK D, PAGE 165, HERBERT J. GOOLD, SET STONE BY ESTABLISHING FROM THE REMAINS OF THE OLD STUMPS.
4. IN 1889, BOOK D, PAGE 180, HERBERT J. GOOLD, FOUND STONE SET BY HIM PREVIOUSLY.
5. IN 1994, BOOK T, PAGE 108, BRUCE D. BOWDEN SET A NUMBER 10 REBAR WHILE PREPARING A PLAT OF SURVEY. MONUMENT WAS SET FROM A DIRECT TIE TO SPRING BROOK ON THE ORIGINAL GOVERNMENT NOTES AND PHYSICAL EVIDENCE OF FENCES. HE RECORDED A US PUBLIC LAND SURVEY MONUMENT RECORD.
6. IN 1999, BOOK 3, PAGE 80, THOMAS L. BUCK, ON A PLAT OF SURVEY FINDS AN IRON ROD.
7. IN 2018, BOOK 42, PAGE 27, KEITH E. DALSING, ON A PLAT OF SURVEY FOUND A 1-1/4" IRON BAR.
8. IN 2020 GREGG STROEING FOUND A 1-1/4" IRON ROD 2 ACCESSORY TIES SET BY BRUCE D. BOWDEN IN 1994. UPDATED AND SET NEW TIES AS SHOWN IN PART C.

(I) I, GREGG STROEING P.L.S. - 2753, CERTIFY THAT THE CORNER LOCATION SHOWN ON THIS RECORD WAS DETERMINED BY ME OR UNDER MY DIRECTION AND CONTROL AND THAT THIS U.S. PUBLIC LAND SURVEY MONUMENT RECORD IS CORRECT AND COMPLETE TO THE BEST OF MY KNOWLEDGE AND BELIEF.

SIGNATURE

12/17/2020

DATE



CORNER NO. 28

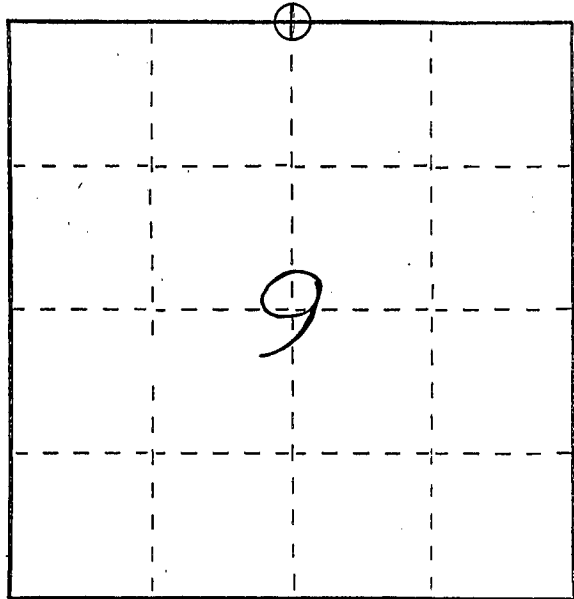
U. S. PUBLIC LAND SURVEY MONUMENT RECORD

MAY 1 1971

INSTRUCTIONS: This record shall show the location of the corner and shall include all of the following nine elements (a through i).

- (a) Identify the corner by reference to the U.S. public land survey system.
- = Corner monument restored.

NORTH 1/4 CORNER OF
SECTION 9, TOWN 5 NORTH
RANGE 1 WEST, CLIFTON
TOWNSHIP, GRANT COUNTY,
WISC.

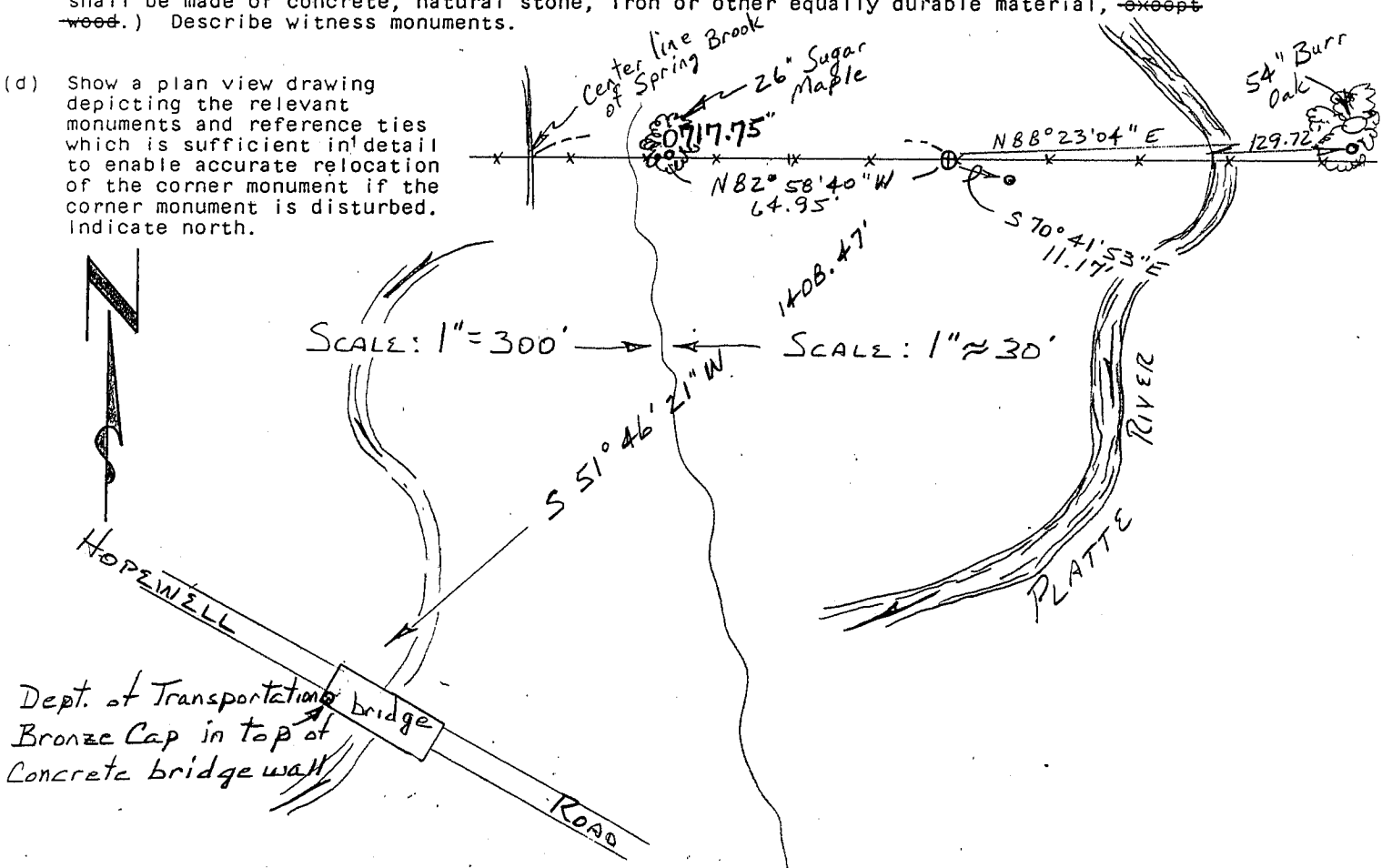


- (b) Describe any record evidence, monument evidence, occupational evidence, testimonial evidence or any other material evidence you considered, and whether the monument was found or placed.

MONUMENT SET FROM DIRECT TIE TO SPRING BROOK ON ORIGINAL GOVERNMENT NOTES AND EXISTING PHYSICAL EVIDENCE OF FENCES. LOCATION IS VERIFIED BY SCAR OF STREAM AND LOG OF SOUTHWEST BEARING TREE.

- (c) In the plan view drawing below, provide reference ties to at least 4 witness monuments, or, if the location is within a municipality, to at least 2 witness monuments. (Witness monuments shall be made of concrete, natural stone, iron or other equally durable material, ~~except wood~~.) Describe witness monuments.

- (d) Show a plan view drawing depicting the relevant monuments and reference ties which is sufficient in detail to enable accurate relocation of the corner monument if the corner monument is disturbed. Indicate north.



(e) Describe any material discrepancy between the location of the corner as restored or reestablished and the location of that corner as previously restored or reestablished by distance and direction. Show the discrepancy on the plan view drawing under (d), above. Show the distances between the corner as previously restored or reestablished and (1) the corner as restored or reestablished, and (2) to at least 2 of the witness monuments shown on the drawing in (d), above.

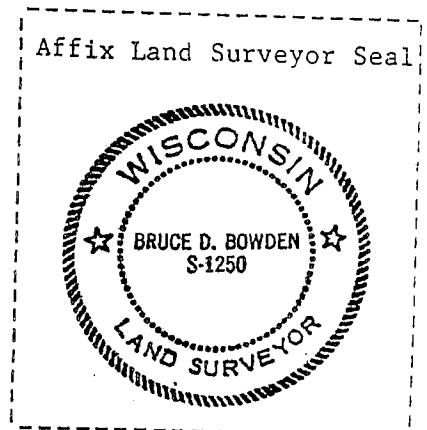
NONE

(f) Was the corner restored through acceptance of (1) an obliterated evidence location, or, (2) a found perpetuated location?

(2) A FOUND PERPETUATED LOCATION.

(g&h) Was the corner reestablished through lost corner proportionate methods? If so, show the method, including the directions and distances to other public land survey corners used as evidence or used for proportioning in determining the corner location?

No.



(i) I, BRUCE D. BOWDEN,

(type or print name) certify that the corner location shown on this record was determined by me or under my direction and control and that this U.S. Public Land Survey Monument Record is correct and complete to the best of my knowledge and belief.

Bruce D. Bowden
Signature

April 26, 1994
Date