

GRANT COUNTY U.S. PUBLIC LAND SURVEY MONUMENT RECORD

(A) IDENTIFY THE CORNER AS REFERENCED TO THE U.S. PUBLIC LAND SURVEY SYSTEM

● = CORNER MONUMENT RESTORED

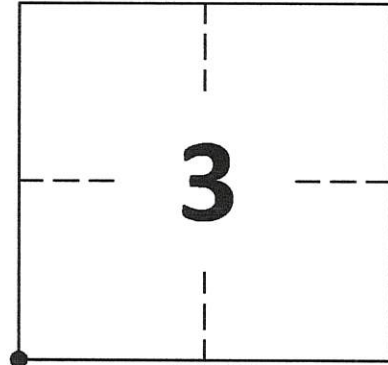
WITNESSES TO CORNER LOCATION:

DAN PETTIS
CALEB KOLANDER

GEOGRAPHIC COORDINATES
NAD 83 (2011) ADJUSTMENT

LATITUDE: 42°55'46.0906"
LONGITUDE: -90°29'15.9002"

WISCONSIN STATE PLANE SOUTH ZONE (US SF):
NORTHING: 339,145.987
EASTING: 1,837,871.981



SECTION 3
TOWNSHIP 5 NORTH, RANGE 1 WEST
TOWN OF CLIFTON

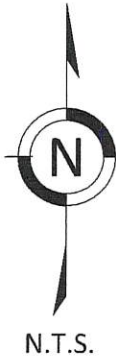
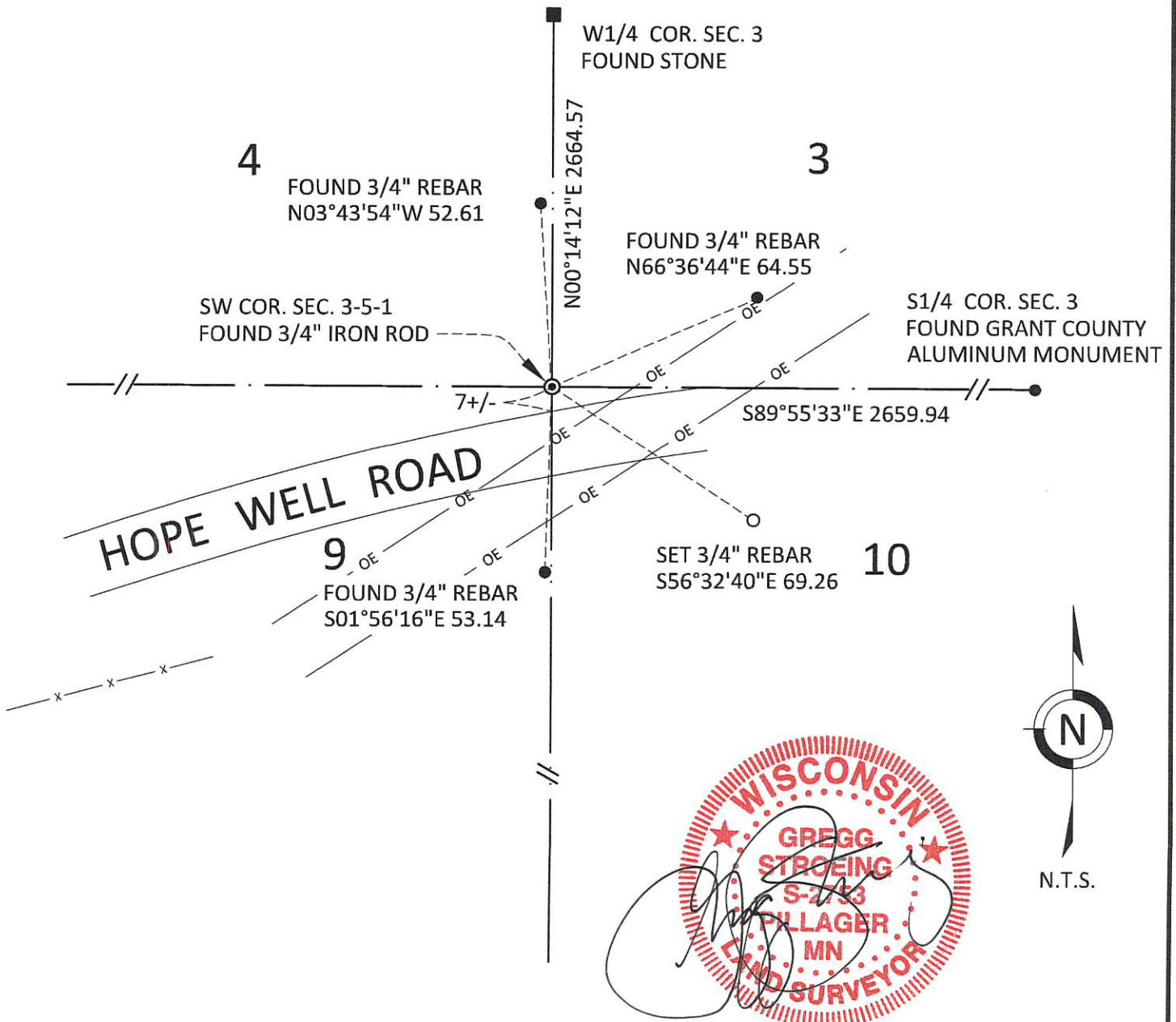
(B) DESCRIBE ANY RECORD EVIDENCE, MONUMENT EVIDENCE, OCCUPATIONAL EVIDENCE, TESTIMONIAL EVIDENCE OR ANY OTHER MATERIAL EVIDENCE YOU CONSIDERED, AND WHETHER THE MONUMENT WAS FOUND OR PLACED.

FOUND 3/4" IRON ROD

(C) IN THE PLAN VIEW DRAWING BELOW, PROVIDE REFERENCE TIES TO AT LEAST 4 WITNESS MONUMENTS. WITNESS MONUMENTS SHALL BE MADE OF CONCRETE, NATURAL STONE, IRON, BEARING TREES OR ANY OTHER EQUALLY DURABLE MATERIAL. DEPICT THE RELEVANT MONUMENTS AND REFERENCE TIES WITH SUFFICIENT DETAIL TO ENABLE ACCURATE RELOCATION OF THE CORNER IF THE CORNER MONUMENT IS DISTURBED.

(D) LEGEND

— x — x — x — x — BARBED WIRE FENCE
——— OE ——— TRANSMISSION LINE



GRANT COUNTY
U.S. PUBLIC LAND SURVEY MONUMENT RECORD

(E) DESCRIBE ANY MATERIAL DISCREPANCY BETWEEN THE LOCATION OF THE CORNER AS RESTORED OR REESTABLISHED AND THE LOCATION OF THAT CORNER AS PREVIOUSLY RESTORED OR REESTABLISHED BY DISTANCE AND DIRECTION. SHOW THE DISCREPANCY ON THE PLAN VIEW DRAWING UNDER (D), ABOVE. SHOW THE DISTANCES BETWEEN THE CORNER AS PREVIOUSLY RESTORED OR REESTABLISHED AND (1) THE CORNER AS RESTORED OR REESTABLISHED, AND (2) TO AT LEAST 2 OF THE WITNESS MONUMENTS SHOWN ON THE DRAWING IN (D) ABOVE.

N/A

(F) WAS THE CORNER RESTORED THROUGH ACCEPTANCE OF (1) AN OBLITERATED EVIDENCE LOCATION, OR (2) A FOUND PERPETUATED LOCATION?

FOUND AT PERPETUATED LOCATION

(G&H) WAS THE CORNER REESTABLISHED THROUGH LOST CORNER PROPORTIONATE METHODS? IF SO, SHOW THE METHOD, INCLUDING THE DIRECTIONS AND DISTANCES TO OTHER PUBLIC LAND SURVEY CORNERS USED AS EVIDENCE OR USED FOR PROPORTIONING IN DETERMINING THE CORNER LOCATION.

N/A

1. CORNER HISTORY: ORIGINAL POST SET IN 1832 BY HENRY PARKE.
2. IN 1846, BOOK B, PAGE 4, GEORGE STINZ FOUND THE ORIGINAL CORNER.
3. IN 1889, BOOK D, PAGE 165, HERBERT J. GOOLD, FOUND A STONE SET BY SOME SURVEYOR IN 1848 AND FOUND TO BE CORRECT.
4. IN 1994, BRUCE D. BOWDEN FOUND A 3/4" REBAR AND ACCEPTED THE LOCATION AFTER VERIFICATION BY PROPORTIONATE MEASUREMENTS AND RECORDED A US PUBLIC LAND SURVEY MONUMENT RECORD.
5. IN 1996, BOOK W, PAGE 92, MICHAEL R. LaROSA, ON A PLAT OF SURVEY, FINDS AN IRON ROD.
6. IN 1999, BOOK 3, PAGE 80, THOMAS L. BUCK, ON A PLAT OF SURVEY FINDS AN IRON ROD.
7. IN 2004, BOOK 14, PAGE 99 AND BOOK 15, PAGE 26, MICHAEL R. LaROSA, ON PLATS OF SURVEY FOUND A 3/4" IRON ROD.
8. IN 2018, BOOK 42, PAGE 27, KEITH E. DALSING, ON A PLAT OF SURVEY FOUND A 3/4" IRON BAR.
9. IN 2020 GREGG STROEING FOUND A 3/4" IRON ROD 7 FEET NORTH OF THE NORTH EDGE OF HOPE WELL ROAD AND 3 ACCESSORY TIES SET BY BRUCE D. BOWDEN IN 1994. UPDATED AND SET NEW TIES AS SHOWN IN PART C.

(I) I, GREGG STROEING P.L.S. - 2753, CERTIFY THAT THE CORNER LOCATION SHOWN ON THIS RECORD WAS DETERMINED BY ME OR UNDER MY DIRECTION AND CONTROL AND THAT THIS U.S. PUBLIC LAND SURVEY MONUMENT RECORD IS CORRECT AND COMPLETE TO THE BEST OF MY KNOWLEDGE AND BELIEF.

SIGNATURE

12/16/2020

DATE



CORNER NO. 27

GRANT COUNTY
CLERK

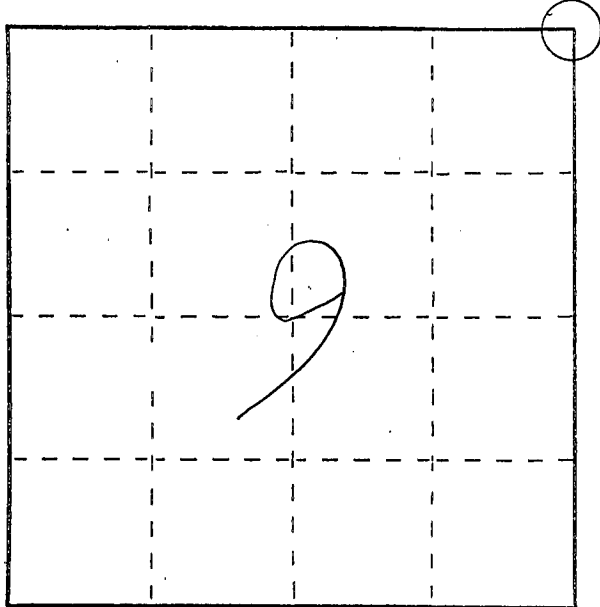
U. S. PUBLIC LAND SURVEY MONUMENT RECORD

INSTRUCTIONS: This record shall show the location of the corner and shall include all of the following nine elements (a through i).

(a) Identify the corner by reference to the U.S. public land survey system.

○ = Corner monument restored.

NORTHEAST CORNER
SECTION 9
TOWN 5 NORTH
RANGE 1 WEST
CLIFTON TOWNSHIP
GRANT COUNTY, WISCONSIN

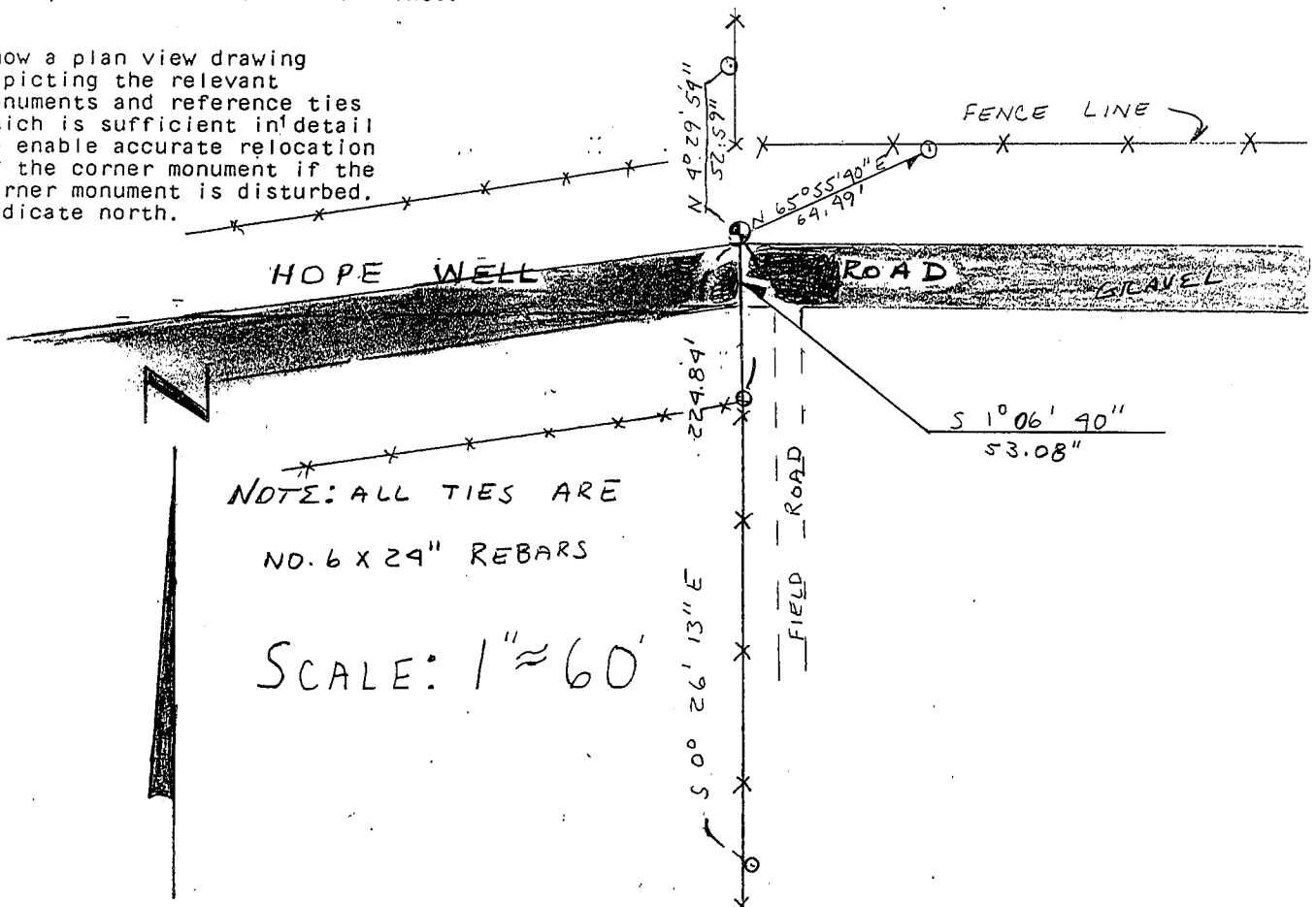


(b) Describe any record evidence, monument evidence, occupational evidence, testimonial evidence or any other material evidence you considered, and whether the monument was found or placed.

FOUND AND ACCEPTED EXISTING NO. 6 REBAR LOCATION
ACCEPTED AFTER VERIFICATION BY PROPORTIONATE MEASUREMENTS
FROM AN EDM TRAVERSE OF THE AREA.

(c) In the plan view drawing below, provide reference ties to at least 4 witness monuments, or, if the location is within a municipality, to at least 2 witness monuments. (Witness monuments shall be made of concrete, natural stone, iron or other equally durable material, ~~except wood.~~) Describe witness monuments.

(d) Show a plan view drawing depicting the relevant monuments and reference ties which is sufficient in detail to enable accurate relocation of the corner monument if the corner monument is disturbed. Indicate north.



(e) Describe any material discrepancy between the location of the corner as restored or reestablished and the location of that corner as previously restored or reestablished by distance and direction. Show the discrepancy on the plan view drawing under (d), above. Show the distances between the corner as previously restored or reestablished and (1) the corner as restored or reestablished, and (2) to at least 2 of the witness monuments shown on the drawing in (d), above.

NONE.

(f) Was the corner restored through acceptance of (1) an obliterated evidence location, or, (2) a found perpetuated location?

(2) A FOUND PERPETUATED LOCATION.

(g&h) Was the corner reestablished through lost corner proportionate methods? If so, show the method, including the directions and distances to other public land survey corners used as evidence or used for proportioning in determining the corner location?

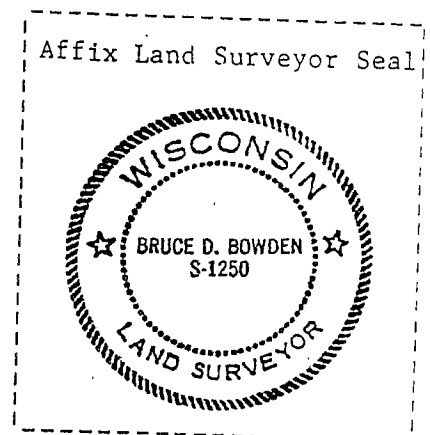
No.

(i) I, BRUCE D. BOWDEN,

(type or print name) certify that the corner location shown on this record was determined by me or under my direction and control and that this U.S. Public Land Survey Monument Record is correct and complete to the best of my knowledge and belief.

Bruce D. Bowden
Signature

April 26, 1994
Date



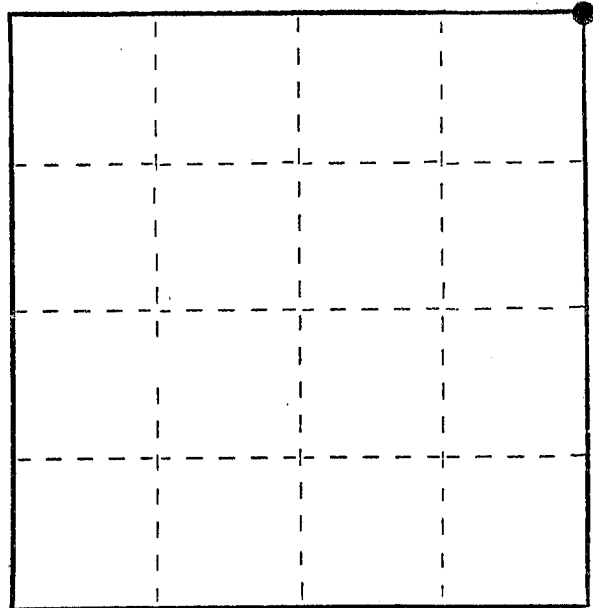
U. S. PUBLIC LAND SURVEY MONUMENT RECORD

INSTRUCTIONS : This record shall show the location of the corner and shall include all of the following nine elements (a through i).

- (a) Identify the corner by reference to the U.S. public land survey system.
- = Corner monument restored.

Original corner set on Dec. 19, 1832.

9-5-1 P.



- (b) Describe any record evidence, monument evidence, occupational evidence, testimonial evidence or any other material evidence you considered, and whether the monument was found or placed.

The only survey of record is dated in 1889, and mentions finding a stone set in 1848. Other "40" corners set at that time in what appear to be undisturbed locations have all proven unlocatable. This corner falls on line with fence lines north and south, and with the centerline of the town road from the east. A shovel dig at the site (gravel and soil) found no evidence of a stone. Distances checked well with existing fence corners to the north and south.

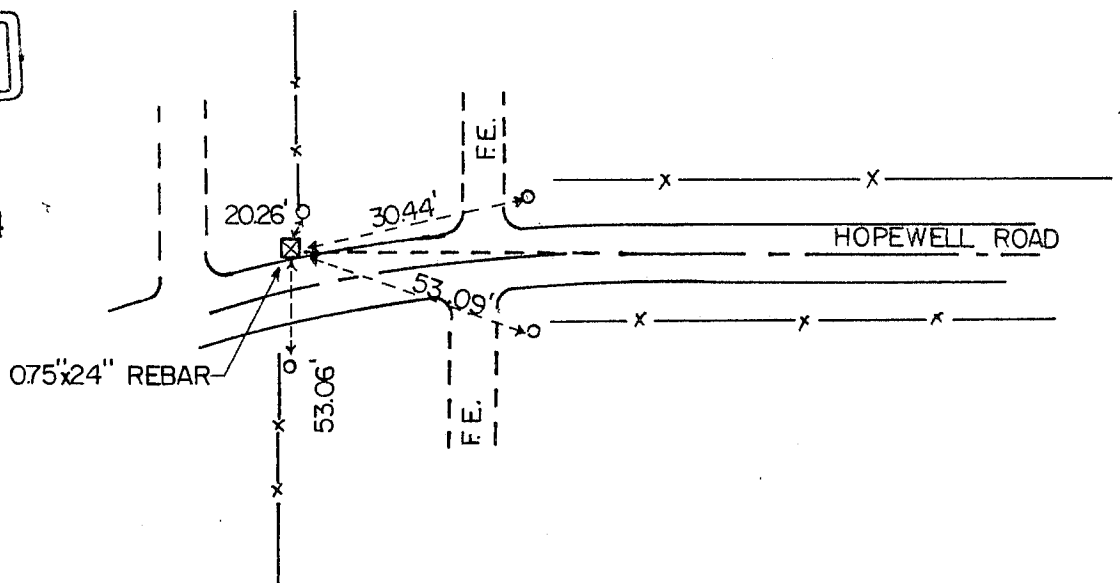
- (c) In the plan view drawing below, provide reference ties to at least 4 witness monuments, or, if the location is within a municipality, to at least 2 witness monuments. (Witness monuments shall be made of concrete, natural stone, iron or other equally durable material, except wood.) Describe witness monuments.

- (d) Show a plan view drawing depicting the relevant monuments and reference ties which is sufficient in detail to enable accurate relocation of the corner monument if the corner monument is disturbed. Indicate north.



GRANT COUNTY
CLERK
RECEIVED

NOV 7 1984



○ - 0.75" x 24" REBAR

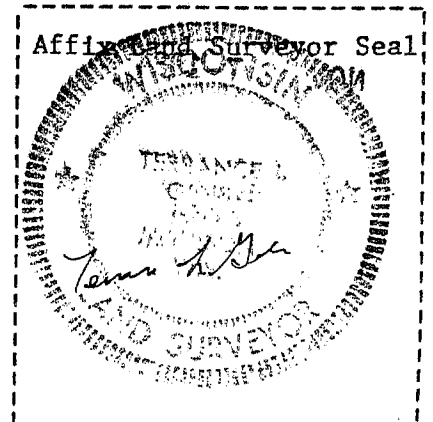
(e) Describe any material discrepancy between the location of the corner as restored or reestablished and the location that corner as previously restored or reestablished by distance and direction. Show the discrepancy on the plan view drawing under (d), above. Show the distances between the corner as previously restored or reestablished and (1) the corner as restored or reestablished, and (2) to at least 2 of the witness monuments shown on the drawing in (d), above.

(f) Was the corner restored through acceptance of (1) an obliterated evidence location, or, (2) a found perpetuated location?

(1.) Obliterated evidence location.

(g&h) Was the corner reestablished through lost corner proportionate methods? If so, show the method, including the directions and distances to other public land survey corners used as evidence or used for proportioning in determining the corner location?

No, due to lack of any other corners in the area.



(i) I, Terrance L. Genske
(type or print name) certify that the corner location shown on this record was determined by me or under my direction and control and that this U.S. Public Land Survey Monument Record is correct and complete to the best of my knowledge and belief.

Terrance L. Genske
Signature

11/5/84
Date