

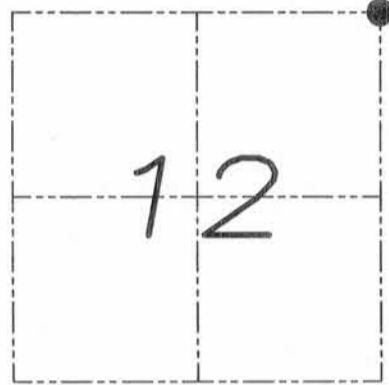
# U.S. PUBLIC LAND SURVEY MONUMENT RECORD

Section 12, Town 5 North Range 1 West, Town of Clifton, Grant County, Wisconsin

## CERTIFICATE

I, Larry L. Austin, do hereby certify that the corner location on this record was determined by me and/or under my direct supervision and that this U.S. public land survey monument record is correct and complete to the best of my knowledge and belief.

*Larry L. Austin*  
 Larry L. Austin, S-1903



● = CORNER LOCATION

## HISTORY OF CORNER

Corner was originally set in 1832 by Lyon. In 1986 Halverson found a P.K. nail and completed a tiesheet. In 2007 Halverson recorded a tiesheet. No other record of the corner was found.

## CORNER EVIDENCE FOUND

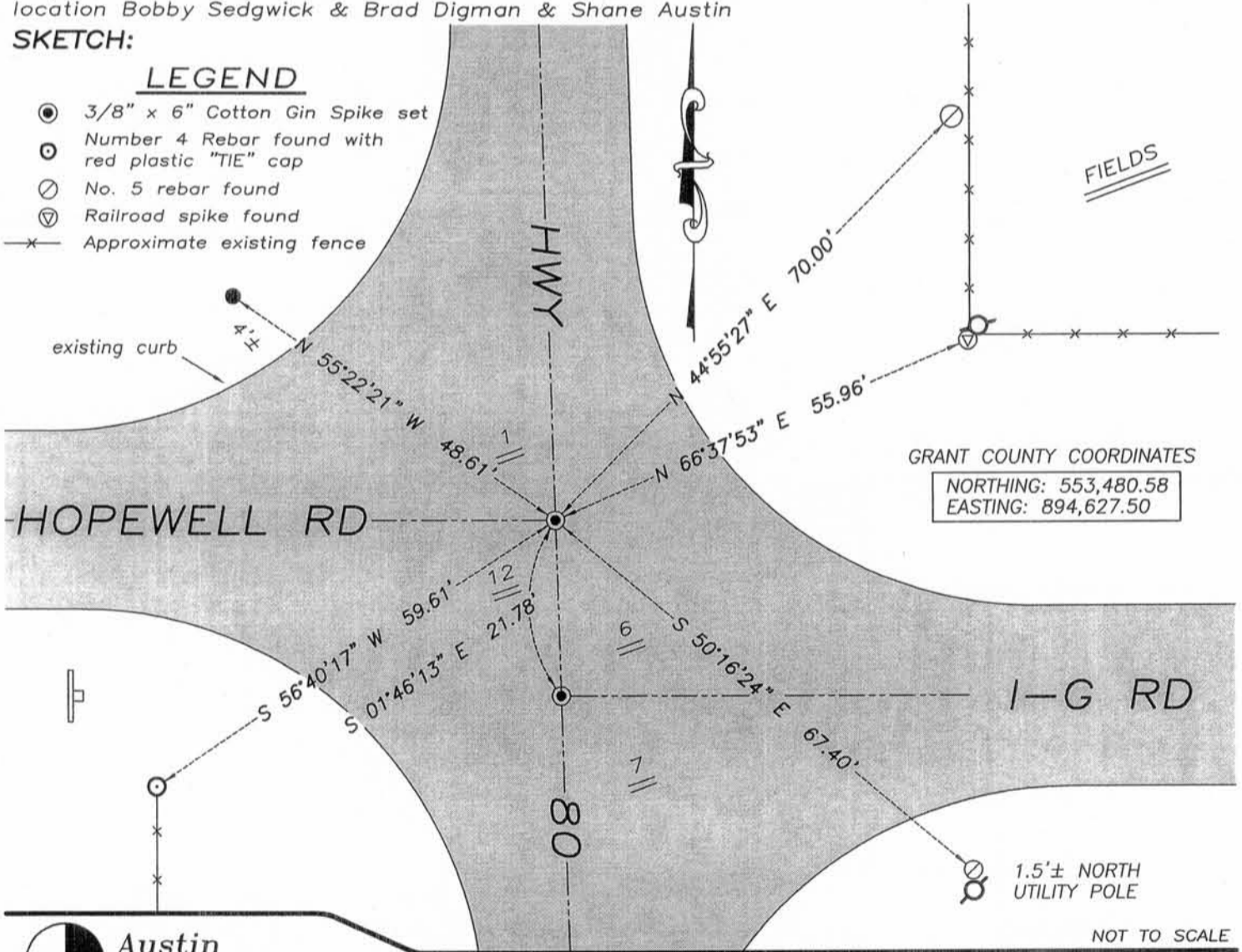
I found and accepted Halverson's location prior to road construction. I reset the corner after construction and measured his ties as shown below. Verified this location using EDM & GPS methods.

DESCRIPTION OF CORNER AND WITNESS MONUMENTS, references and accessories used to perpetuate the original or re-established location of this corner. Witnesses to monument location Bobby Sedgwick & Brad Digman & Shane Austin

## SKETCH:

### LEGEND

- 3/8" x 6" Cotton Gin Spike set
- Number 4 Rebar found with red plastic "TIE" cap
- ⊙ No. 5 rebar found
- ⊖ Railroad spike found
- x- Approximate existing fence



**Austin Engineering LLC**

4211 HWY 81 E, LANCASTER, WI 53813  
 PHONE 608-723-6363 FAX 608-723-6702

JOB NUMBER 08S249-WIDOT  
 FIELDBOOK: TDSR, 2810-B  
 G:\GRANTDOT\T5NR1W  
 H:\TIE\T5NR1W\21

DRAWN BY: SW AUSTIN  
 APPROVED: LL AUSTIN

21

JUN 28 2010

# U.S. PUBLIC LAND SURVEY MONUMENT RECORD

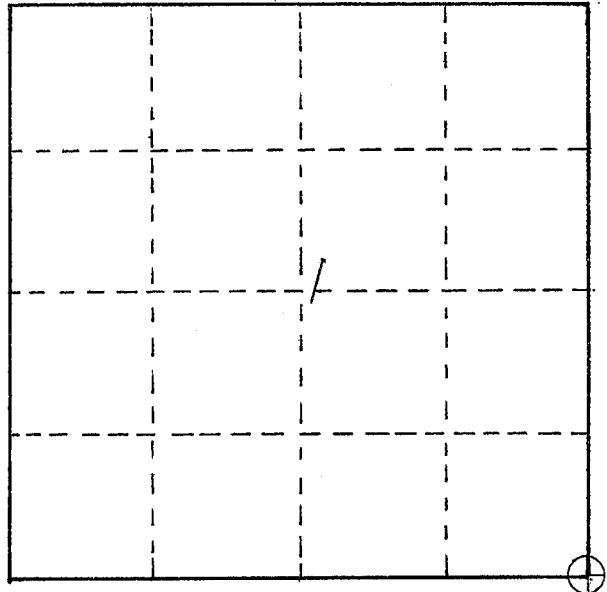
**INSTRUCTIONS :** This record shall show the location of the corner and shall include all of the following nine elements (a through i).

- (a) Identify the corner by reference to the U.S. public land survey system.

⊕ = Corner Monument restored.

*Southeast corner  
Section 1, Town 5 North,  
Range 1 West, Town of Clifton*

*Set pk nail in pavement*



- (b) Describe any record evidence, monument evidence, occupational evidence, testimonial evidence or any other material evidence you considered, and whether the monument was found or placed.

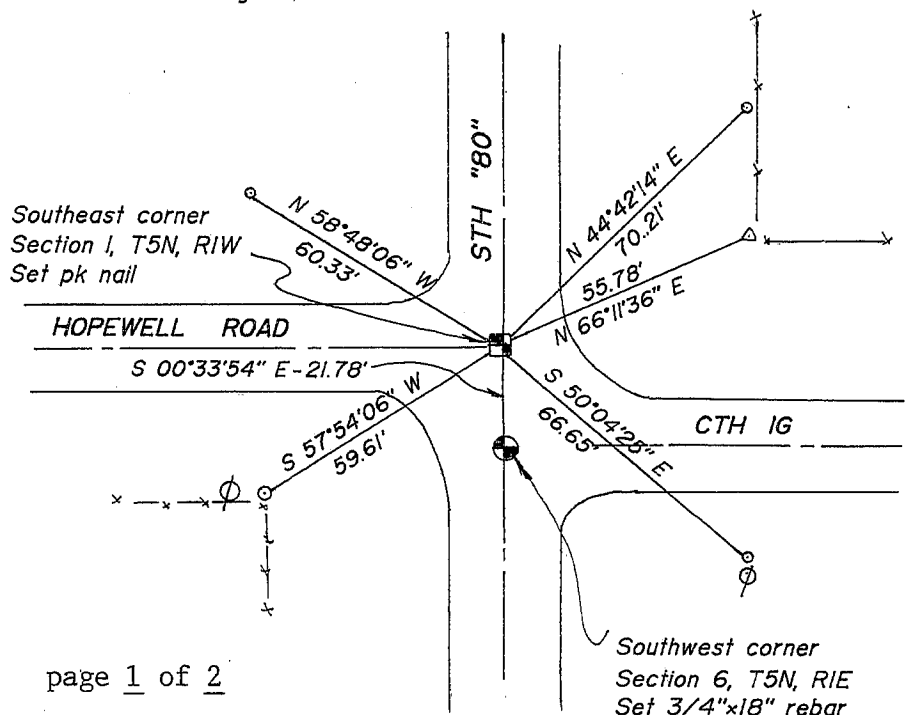
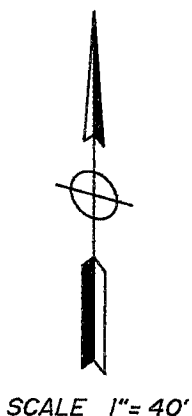
I set a pk nail in the centerline of STH '80' as previously shown on a tie sheet dated 5/2/86 prepared by myself. I had previously found a pk nail at this location.

- (c) In the plan view drawing below, provide reference ties to at least 4 witness monuments. Witness monuments shall be made of concrete, natural stone, iron or other equally durable material. Describe witness monuments found or placed.

- (d) Show a plan view drawing depicting the relevant monuments and reference ties which is sufficient in detail to enable accurate relocation of the corner monument if the corner monument is disturbed. Indicate north.

**LEGEND**

- △ Found railroad spike in power pole
- ⊙ Found 3/4" rebar
- Set 5/8"x18" rebar
- x—x Existing fence



- (e) Describe any material discrepancy between the location of the corner as restored or reestablished and the location of that corner as previously restored or reestablished by distance and direction. Show the discrepancy on the plan view drawing under (d), page 1. Show the distances between the corner as previously restored or reestablished and (1) the corner as restored or reestablished, and (2) to at least 2 of the witness monuments shown on the drawing in (d), page 1.

None.

- (f) Was the corner restored through acceptance of (1) an obliterated evidence location, or, (2) a found perpetuated location?

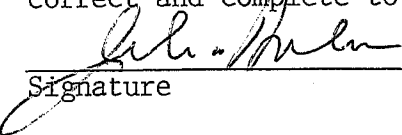
Set at previous location

- (g&h) Was the corner reestablished through lost corner proportionate methods? If so, show the method, including the directions and distances to other public land survey corners used as evidence or used for proportioning in determining the corner location.

Affix Land Surveyor Seal



- (i) I, John M. Halverson  
(type or print name) certify that this corner location shown on this record was determined by me or under my direction and control and that this U.S. Public Land Survey Monument Record is correct and complete to the best of my knowledge and belief.

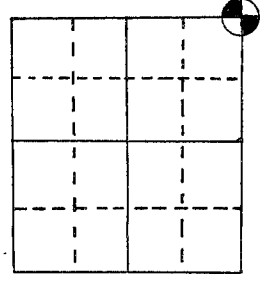
  
Signature

10/21/07  
Date

# U.S. PUBLIC LAND SURVEY MONUMENT RECORD

Note: This form is intended and designed to fulfill all requirements of Wisconsin Administrative Code, Chapter A-E 5.02, U.S. Public Land Survey Monument Record (3) (a) (b) (c) (d) (e) (f) (g) (h) (i). An additional sheet may be added if necessary to conform with said requirements.

(a) Corner location: Township 5 North  
 Range 1 ~~East~~ West  
 Town/City Clifton  
 County Grant

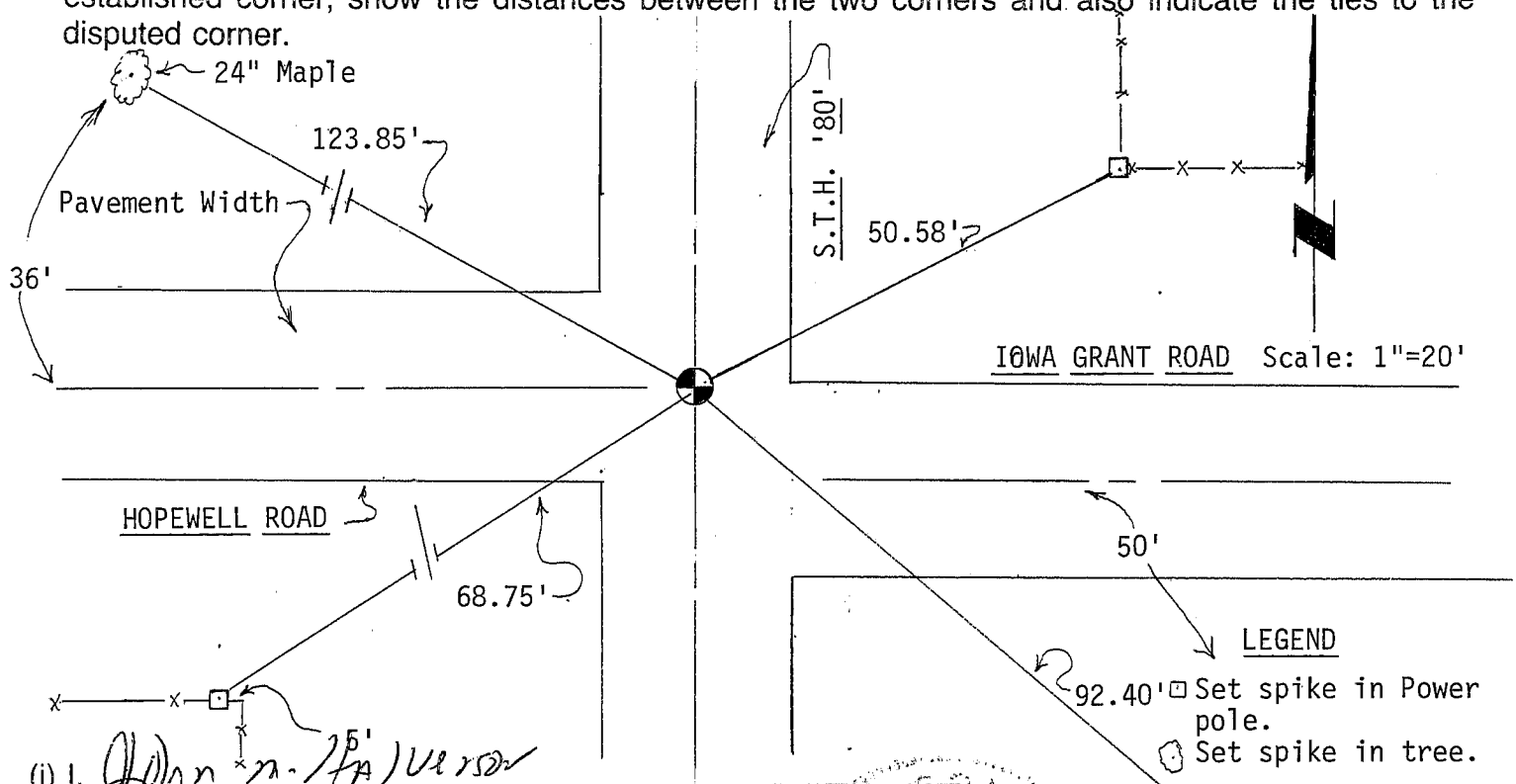


Section 12

(b) (f) (g) (h) Description of monument found at this corner and if it was accepted, state all evidence (material, testimonial, occupational, plats, records, other monuments) used as a basis for accepting. If not accepted or if nothing was found, state evidence used as basis for establishing location. If reestablished through lost corner proportionate methods, indicate all monuments, distances and directions used to establish.

Found P.K. nail in centerline of S.T.H. '80' and Hopewell Road.

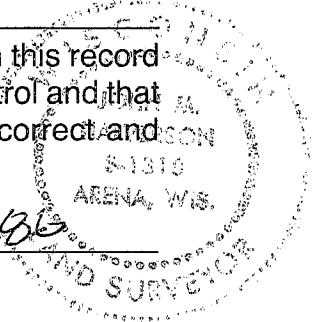
(c) (d) (e) Plan view of corner with ties to at least 4 witness monuments. If in disagreement with previously established corner, show the distances between the two corners and also indicate the ties to the disputed corner.



(i) I, John M. Anderson  
 (type or print name) certify that the corner location on this record was determined by me or under my direction and control and that this U.S. Public Land Survey Monument Record is correct and complete to the best of my knowledge and belief.

John M. Anderson  
 Signature

5/2/85  
 Date



**LEGEND**  
 □ Set spike in Power pole.  
 ○ Set spike in tree.  
 Affix seal here  
 4" Oak