

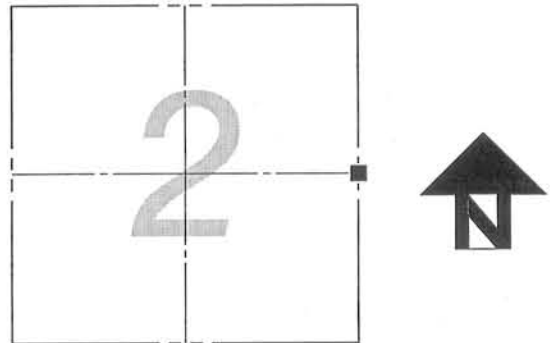
# GRANT COUNTY

## CERTIFIED U.S. PUBLIC LAND SURVEY MONUMENT RECORD

INSTRUCTIONS: THIS RECORD SHALL SHOW THE LOCATION OF THE CORNER AND SHALL INCLUDE ALL OF THE FOLLOWING NINE ELEMENTS (A THROUGH I)

- (A) IDENTIFY THE CORNER BY REFERENCE TO THE U.S. PUBLIC LAND SURVEY SYSTEM
- = CORNER MONUMENT RESTORED
- WITNESSES TO CORNER LOCATION:  
WESLEY L. KRAEMER

GRANT COUNTY COORDINATES  
NORTHING: 556169.77  
EASTING: 889274.57



SECTION 2, T.5N., R.1W.

- (B) DESCRIBE ANY RECORD EVIDENCE, MONUMENT EVIDENCE, OCCUPATIONAL EVIDENCE, TESTIMONIAL EVIDENCE, OR ANY OTHER MATERIAL EVIDENCE YOU CONSIDERED, AND WHETHER THE MONUMENT WAS FOUND OR PLACED.

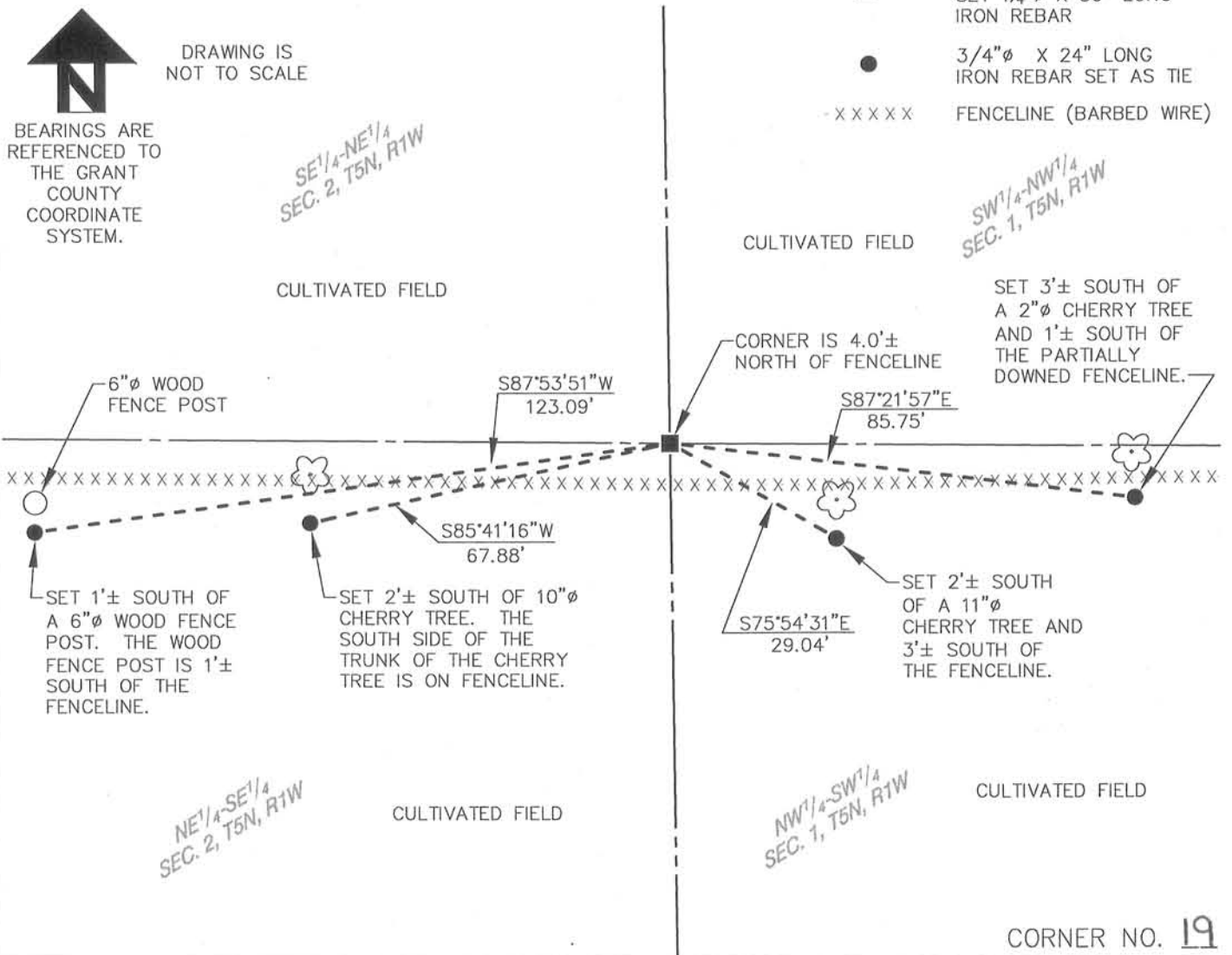
EXTENSIVE RESEARCH FOUND REFERENCE TO THIS CORNER IN THE ORIGINAL GOVERNMENT NOTES AND A SURVEY DONE BY DAVID F. BURBACH DATED JANUARY 6, 1999. BURBACH SHOWS BEARINGS AND DISTANCES TO THIS CORNER FROM THE NORTHEAST AND SOUTHEAST CORNERS OF SECTION 2, BUT HE DID NOT MAKE ANY NOTE OF A MONUMENT BEING FOUND OR SET AT THIS CORNER. EVIDENCE IN THE VICINITY OF THIS CORNER INCLUDES AN EAST-WEST FENCELINE AND A DISTINCT LINE IN THE AGRICULTURAL FIELDS RUNNING NORTH FROM THE CORNER WHICH CORRELATES WITH THE CHANGE IN OWNERSHIP BETWEEN THE NORTHEAST QUARTER OF SECTION 2 AND THE NORTHWEST QUARTER OF SECTION 1. I TRAVERSED THE AREA USING GPS AND A ROBOTIC TOTAL STATION. I COMPUTED THIS CORNER LOCATION USING THE ORIGINAL RECORD DISTANCES AND A SINGLE PROPORTIONATE MEASUREMENT BETWEEN THE NORTHEAST AND SOUTHEAST CORNERS OF SECTION 2. I SET A MONUMENT AND 4 TIES AS SHOWN BELOW.

- (C) IN THE PLAN VIEW DRAWING BELOW, PROVIDE REFERENCE TIES TO AT LEAST 4 WITNESS MONUMENTS, OR, IF THE LOCATION IS WITHIN A MUNICIPALITY, TO AT LEAST 2 WITNESS MONUMENTS, (WITNESS MONUMENTS SHALL BE MADE OF CONCRETE, NATURAL STONE, IRON OR OTHER EQUALLY DURABLE MATERIAL). DESCRIBE WITNESS MONUMENTS.

- (D) SHOW A PLAN VIEW DRAWING DEPICTING THE RELEVANT MONUMENTS AND REFERENCE TIES WHICH IS SUFFICIENT IN DETAIL TO ENABLE ACCURATE RELOCATION OF THE CORNER MONUMENT IF IT IS DISTURBED.

### LEGEND

- $E\frac{1}{4}$  SECTION 2, T5N, R1W  
SET  $1\frac{1}{4}$ "  $\phi$  X 30" LONG  
IRON REBAR
- $3/4$ "  $\phi$  X 24" LONG  
IRON REBAR SET AS TIE
- x x x x x FENCELINE (BARBED WIRE)



(E) DESCRIBE ANY MATERIAL DISCREPANCY BETWEEN THE LOCATION OF THE CORNER AS RESTORED OR REESTABLISHED AND THE LOCATION OF THAT CORNER AS PREVIOUSLY RESTORED OR REESTABLISHED BY DISTANCE AND DIRECTION. SHOW THE DISCREPANCY ON THE PLAN VIEW DRAWING UNDER (D), ABOVE. SHOW THE DISTANCES BETWEEN THE CORNER AS PREVIOUSLY RESTORED OR REESTABLISHED AND (1) THE CORNER AS RESTORED OR REESTABLISHED, AND (2) TO AT LEAST 2 OF THE WITNESS MONUMENTS SHOWN ON THE DRAWING IN (D) ABOVE.

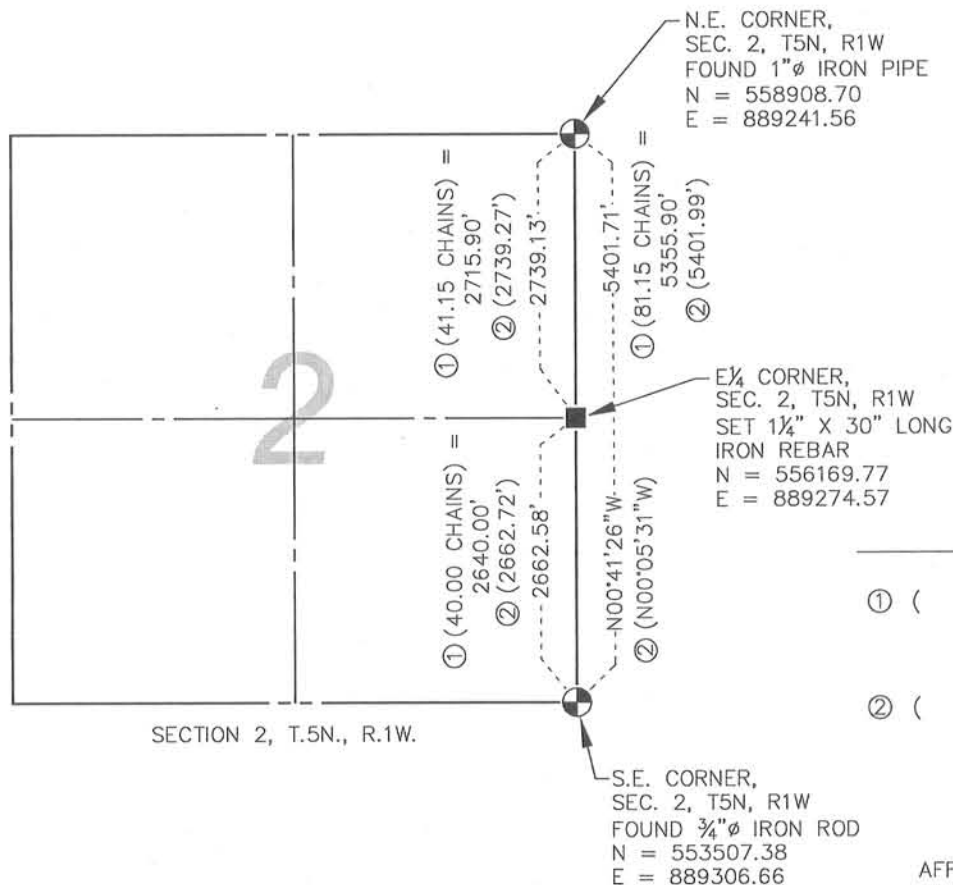
NO DISCREPANCY FOUND

(F) WAS THE CORNER RESTORED THROUGH ACCEPTANCE OF (1) AN OBLITERATED EVIDENCE LOCATION, OR, (2) A FOUND PERPETUATED LOCATION?

(2) A FOUND PERPETUATED LOCATION.

(G&H) WAS THE CORNER REESTABLISHED THROUGH LOST CORNER PROPORTIONATE METHODS? IF SO, SHOW THE METHOD, INCLUDING THE DIRECTIONS AND DISTANCES TO OTHER PUBLIC LAND SURVEY CORNERS USED AS EVIDENCE OR USED FOR PROPORTIONING IN DETERMINING THE CORNER LOCATION.

YES



  
BEARINGS ARE  
REFERENCED TO  
THE GRANT  
COUNTY  
COORDINATE  
SYSTEM.

DRAWING IS  
NOT TO SCALE

LEGEND

- ① ( ) RECORDED AS INFORMATION FROM ORIGINAL GOVERNMENT SURVEY NOTES
- ② ( ) RECORDED AS INFORMATION FROM DAVID F. BURBACH SURVEY, DATED 1/6/99

AFFIX LAND SURVEYOR SEAL

(I) I, FREDERICK G. GRUBER, RLS- 2282, CERTIFY THAT THE CORNER LOCATION SHOWN ON THIS RECORD WAS DETERMINED BY ME OR UNDER MY DIRECTION AND CONTROL AND THAT THIS U.S. PUBLIC LAND SURVEY MONUMENT RECORD IS CORRECT AND COMPLETE TO THE BEST OF MY KNOWLEDGE AND BELIEF.

*Frederick G. Gruber*  
SIGNATURE

3/24/11  
DATE

