

GRANT COUNTY U.S. PUBLIC LAND SURVEY MONUMENT RECORD

(A) IDENTIFY THE CORNER AS REFERENCED TO THE U.S. PUBLIC LAND SURVEY SYSTEM

● = CORNER MONUMENT RESTORED

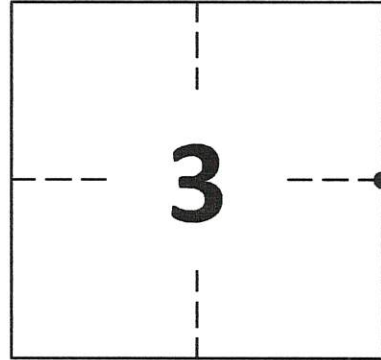
WITNESSES TO CORNER LOCATION:

DAN PETTIS
CALEB KOLANDER

GEOGRAPHIC COORDINATES
NAD 83 (2011) ADJUSTMENT

LATITUDE: 42°56'12.6774"
LONGITUDE: -90°28'04.3123"

WISCONSIN STATE PLANE SOUTH ZONE (US SF):
NORTHING: 341,807.046
EASTING: 1,843,212.7180

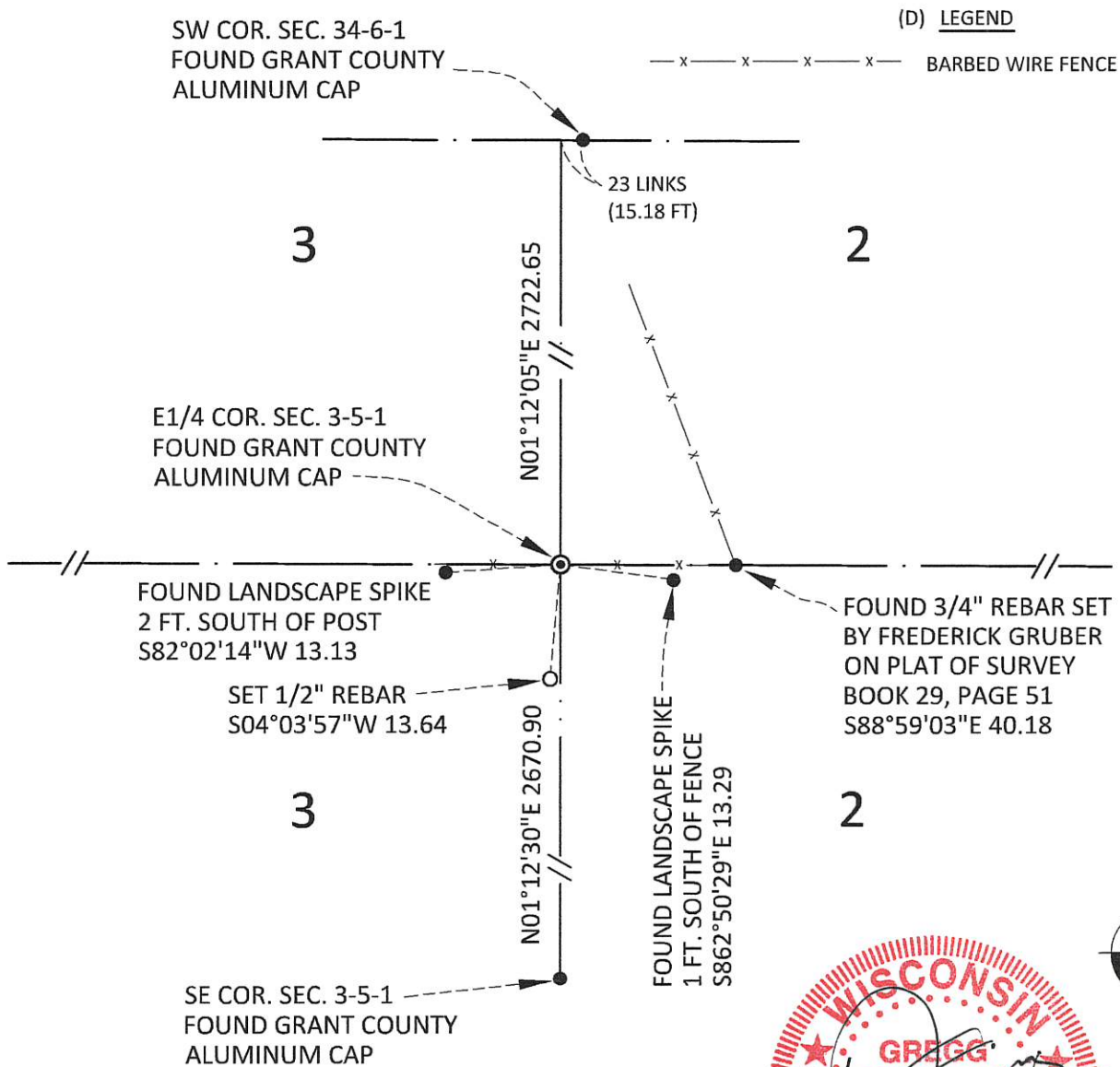


SECTION 3
TOWNSHIP 5 NORTH, RANGE 1 WEST
TOWN OF CLIFTON

(B) DESCRIBE ANY RECORD EVIDENCE, MONUMENT EVIDENCE, OCCUPATIONAL EVIDENCE, TESTIMONIAL EVIDENCE OR ANY OTHER MATERIAL EVIDENCE YOU CONSIDERED, AND WHETHER THE MONUMENT WAS FOUND OR PLACED.

FOUND GRANT COUNTY ALUMINUM CAP SET BY MICHAEL R. LaROSA IN 2004

(C) IN THE PLAN VIEW DRAWING BELOW, PROVIDE REFERENCE TIES TO AT LEAST 4 WITNESS MONUMENTS. WITNESS MONUMENTS SHALL BE MADE OF CONCRETE, NATURAL STONE, IRON, BEARING TREES OR ANY OTHER EQUALLY DURABLE MATERIAL. DEPICT THE RELEVANT MONUMENTS AND REFERENCE TIES WITH SUFFICIENT DETAIL TO ENABLE ACCURATE RELOCATION OF THE CORNER IF THE CORNER MONUMENT IS DISTURBED.



N.T.S.

GRANT COUNTY
U.S. PUBLIC LAND SURVEY MONUMENT RECORD

(E) DESCRIBE ANY MATERIAL DISCREPANCY BETWEEN THE LOCATION OF THE CORNER AS RESTORED OR REESTABLISHED AND THE LOCATION OF THAT CORNER AS PREVIOUSLY RESTORED OR REESTABLISHED BY DISTANCE AND DIRECTION. SHOW THE DISCREPANCY ON THE PLAN VIEW DRAWING UNDER (D), ABOVE. SHOW THE DISTANCES BETWEEN THE CORNER AS PREVIOUSLY RESTORED OR REESTABLISHED AND (1) THE CORNER AS RESTORED OR REESTABLISHED, AND (2) TO AT LEAST 2 OF THE WITNESS MONUMENTS SHOWN ON THE DRAWING IN (D) ABOVE.

N/A

(F) WAS THE CORNER RESTORED THROUGH ACCEPTANCE OF (1) AN OBLITERATED EVIDENCE LOCATION, OR (2) A FOUND PERPETUATED LOCATION?

FOUND AT PERPETUATED LOCATION

(G&H) WAS THE CORNER REESTABLISHED THROUGH LOST CORNER PROPORTIONATE METHODS? IF SO, SHOW THE METHOD, INCLUDING THE DIRECTIONS AND DISTANCES TO OTHER PUBLIC LAND SURVEY CORNERS USED AS EVIDENCE OR USED FOR PROPORTIONING IN DETERMINING THE CORNER LOCATION.

N/A

1. CORNER HISTORY: IN 1832 HENRY PARKE SET ORIGINAL CORNER
2. IN 1846, BOOK B, PAGE 5, GEORGE STUNTZ FOUND THE ORIGINAL CORNER
3. IN 2004, BOOK 15, PAGE 26, MICHAEL R. LaRUSSA SET A 1" X 30" IRON ROD WITH ALUMINUM CAP AND RECORDED A U.S. PUBLIC LAND SURVEY MONUMENT RECORD.
4. IN 2011, BOOK 29, PAGE 18, FREDERICK G. GRUBER SHOWS THIS MONUMENT ON A PLAT OF SURVEY.
5. IN 2020 GREGG STROEING ACCEPTED THIS POSITION OF THE 1" IRON ROD WITH ALUMINUM CAP SET BY MICHAEL R. LaRUSSA IN 2004 AND VERIFIED AND SET NEW TIES AS SHOWN IN PART C

(I) I, GREGG STROEING P.L.S. - 2753, CERTIFY THAT THE CORNER LOCATION SHOWN ON THIS RECORD WAS DETERMINED BY ME OR UNDER MY DIRECTION AND CONTROL AND THAT THIS U.S. PUBLIC LAND SURVEY MONUMENT RECORD IS CORRECT AND COMPLETE TO THE BEST OF MY KNOWLEDGE AND BELIEF.

SIGNATURE

12/08/2020

DATE



CORNER NO. 18

U.S. PUBLIC LAND SURVEY MONUMENT RECORD

(As Required By s. A-E 7.08, WI Adm. Code)

History of original corner establishment and subsequent restorations and description of any record, monument, occupational, testimonial or other evidence considered: *The last record I found of ownership changing at this corner was from the late 1800's when a road passed through East-west and there was change of ownership at the section line. Currently there is an east-west fence the northing of which is balanced with other measurements in the section. I measured to a 2" pipe set in 1988 by Mallett but did not except it as it was too far west near the northeast corner. I found an Aluminum capped Iron Rod 42.85' easterly of this pipe at the southeast corner of 34. I projected a line*

Corner was: (Check All That Apply) *From an Iron rod at the southeast corner through the fence to a point 23 links west of this and set the corner at the intersection with the fence.*

- Restored through acceptance of an obliterated evidence location
- Restored through acceptance of a found perpetuated location
- Considered a lost corner and reestablished through lost corner proportionate methods (include a plan view drawing showing distances and directions to other Public Land Survey Corners used for proportioning and determining the corner location)
- Restored or reestablished in a location that differs from a previous restoration or reestablishment (include a plan view drawing and indicate what was set and /or found)

Describe the monument and accessories used to perpetuate the location of this corner. (Include a plan view drawing and indicate what was set and/or found)

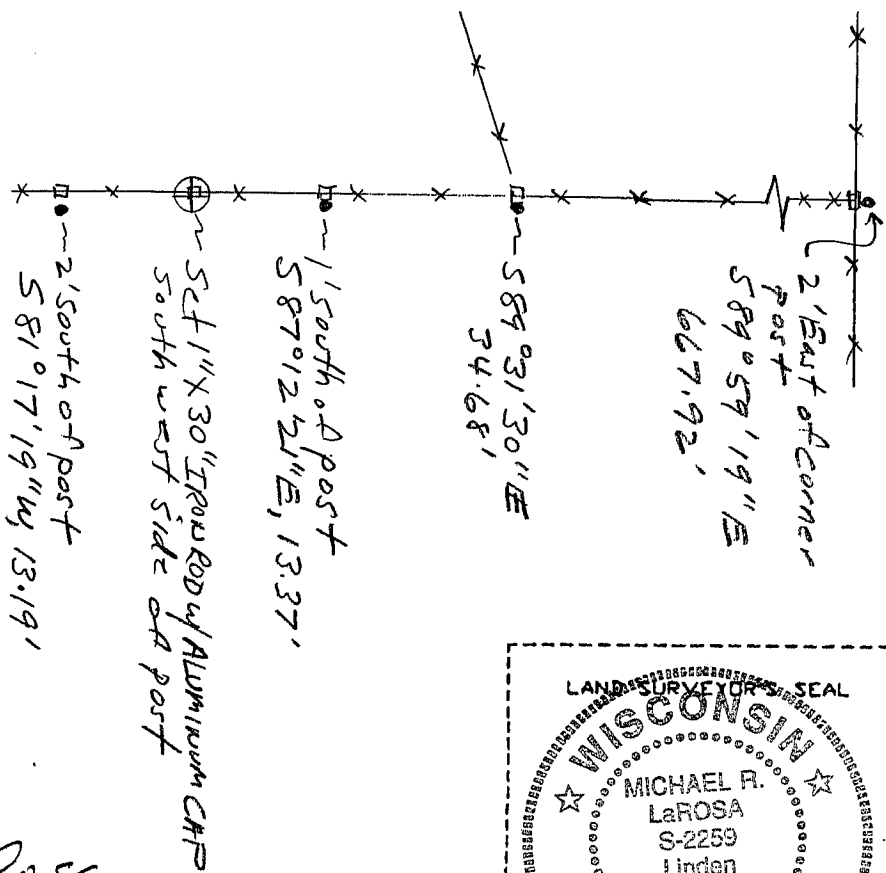
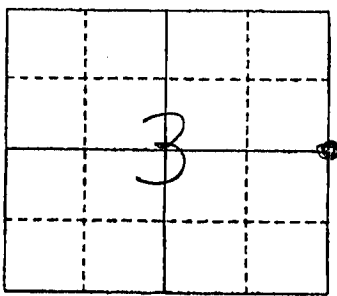
NOTE: SEE SECTION SUMMARY SHEET FOR MORE INFORMATION

Legend
 • 12" Landscape Spike Set
 □ Wood Post
 * * *

1" = 20' +/-

Br. Ref. Grant Co. Coord. System

The E 1/4
 corner of Section 3
 T. 5 N., R. 1 W,
Grant County, Wisconsin
 Job ID: 200413
 Book # 7



● = Location of Corner

Michael R LaRosa
 I, Michael R LaRosa certify that the corner location shown on this record was determined by me or under my direction and control and that this U.S. Public Land Survey Monument Record is correct and complete to the best of my knowledge and belief.



Michael R LaRosa 4/10/04
 Signature Date

Index No. 18

*556212.66
 883947.69 emailed*