

U. S. PUBLIC LAND SURVEY MONUMENT RECORD

INSTRUCTIONS: This record shall show the location of the corner and shall include all of the following nine elements (a through i).

(a) Identify the corner by reference to the U.S. public land survey system.

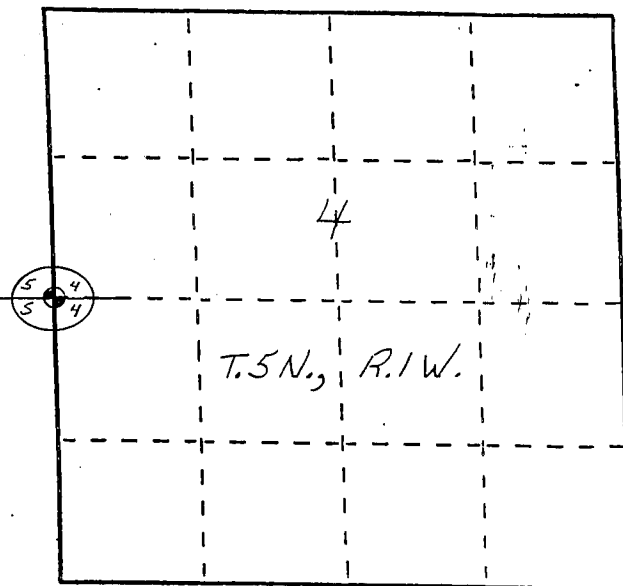
○ = Corner monument restored.

The West Quarter Corner of Section 4, Town 5 North, Range 1 West, Clifton Township, Grant County, Wisconsin.

NORTH 556,121.55'

EAST 873,308.06'

GRANT COUNTY COORDINATES
WGS 1984 (91)



(b) Describe any record evidence, monument evidence, occupational evidence, testimonial evidence or any other material evidence you considered, and whether the monument was found or placed.

FOUND HERBERT J. GOULD'S STONE FROM OCT 27, 1889.

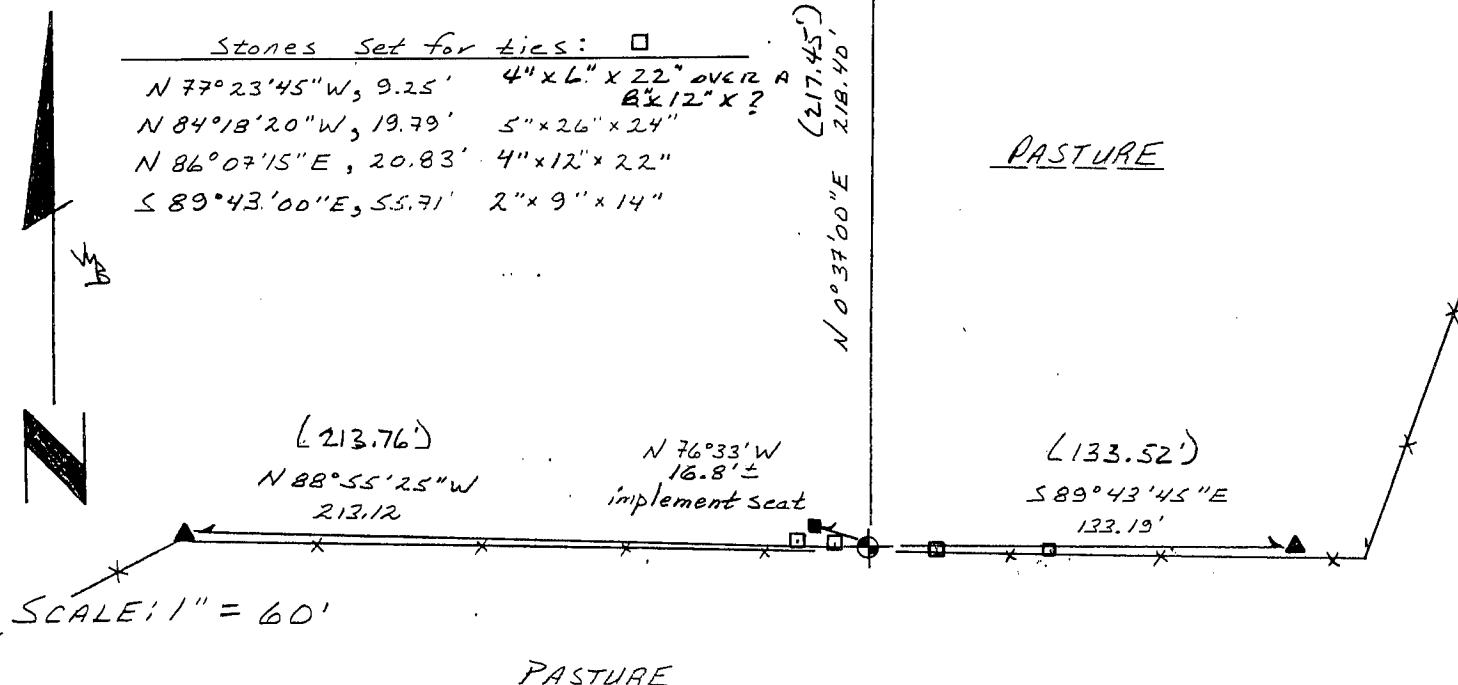
IT WAS LEANING TO THE NORTHEAST WHERE IT HAD SLID INTO THE HOLE LEFT BY THE ROTTING CORNER POST THAT I HAD LOCATED IN 1990. THE SOILS UNDER THE SOUTHWEST SIDE WERE FINE SILTS, SO I REMOVED THEM AND STOOD THE STONE BACK UP INTO THE ORIGINAL POSITION.

(c) In the plan view drawing below, provide reference ties to at least 4 witness monuments, or, if the location is within a municipality, to at least 2 witness monuments. (Witness monuments shall be made of concrete, natural stone, iron or other equally durable material Describe witness monuments.

(d) Show a plan view drawing depicting the relevant monuments and reference ties which is sufficient in detail to enable accurate relocation of the corner monument if the corner monument is disturbed. Indicate north.

36" Oak  Rebar 1/2" dia rebarr-fd.

- Stones Set for ties: □
- N 77° 23' 45" W, 9.25' 4" x 6" x 22" over A B x 12" x ?
 - N 84° 18' 20" W, 19.79' 5" x 26" x 24"
 - N 86° 07' 15" E, 20.83' 4" x 12" x 22"
 - S 89° 43' 00" E, 55.71' 2" x 9" x 14"



SCALE: 1" = 60'

PASTURE

- (e) Describe any material discrepancy between the location of the corner as restored or reestablished and the location of that corner as previously restored or reestablished by distance and direction. Show the discrepancy on the plan view drawing under (d), above. Show the distances between the corner as previously restored or reestablished and (1) the corner as restored or reestablished, and (2) to at least 2 of the witness monuments shown on the drawing in (d), above.

MONUMENT WAS STRAIGHTENED FROM A TIPPED POSITION.
SEE (d) FOR QUANTITIES

- (f) Was the corner restored through acceptance of (1) an obliterated evidence location, or, (2) a found perpetuated location?

A found perpetuated location.

- (g&h) Was the corner reestablished through lost corner proportionate methods? If so, show the method, including the directions and distances to other public land survey corners used as evidence or used for proportioning in determining the corner location?

No.

(1) Bruce D. Bowden

(type or print name) certify that the corner location shown on this record was determined by me or under my direction and control and that this U.S. Public Land Survey Monument Record is correct and complete to the best of my knowledge and belief.

Signature

Date

Affix Land Surveyor Seal



Bruce D. Bowden

Oct 7, 2004

REC'D AUG 26 1998

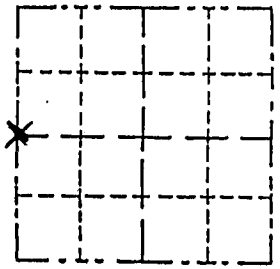
Survey Monument Record

TYPE OF MONUMENT STONE
STATE PLANE COORDINATES: N _____
E _____
ELEVATION — M.S.L. DATUM: _____
THETA ANGLE: _____
FIELD BOOK: _____
PAGE _____

CORNER NO. _____
SECTION 4
TOWN 5 NORTH
RANGE 1 WEST

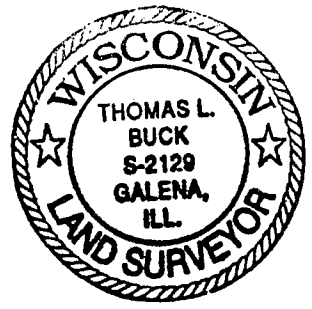
BASIS FOR MONUMENT LOCATION

(Use reverse side if necessary)
Show info such as: History of corner, with reference to Vol. and pg., dates, surveyor; exact description of monument replaced; if location computed, by taped or EDM traverse; landowner, remarks, etc.



LOCATION
(Indicated by "X")
 FOUND PERPETUATED LOCATION
 ORIGINATED EVIDENCE LOCATION
 LOST CORNER (RESTORED BY PROPORTIONATE METHODS)

FOUND AND ACCEPTED A STONE-RECORDED IN BOOK "D" PAGE 180 GRANT COUNTY CLERKS OFFICE AFTER AN EDM TRAVERSE OF SECTIONS 4 + 9 AND G.P.S. OBSERVATIONS

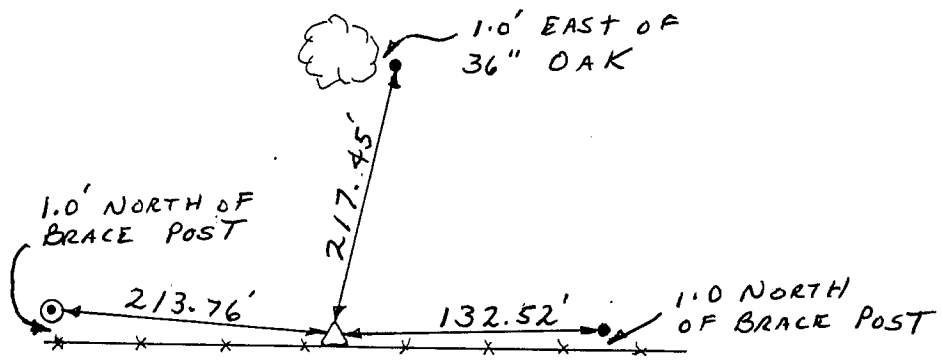


CERTIFIED CORRECT TO THE BEST OF MY KNOWLEDGE AND BELIEF

Thomas L. Buck
Registered Land Surveyor
DATE: 8/24/98

TIE SKETCH

Show at least three (3) ties and monument



NO SCALE

LEGEND

- △ = STONE
- ⊙ = P.K. + SHINER
- = 1/2" IRON ROD
- *-*- = EXISTING FENCE

U. S. PUBLIC LAND SURVEY MONUMENT RECORD

INSTRUCTIONS: This record shall show the location of the corner and shall include all of the following nine elements (a through i).

(a) Identify the corner by reference to the U.S. public land survey system.

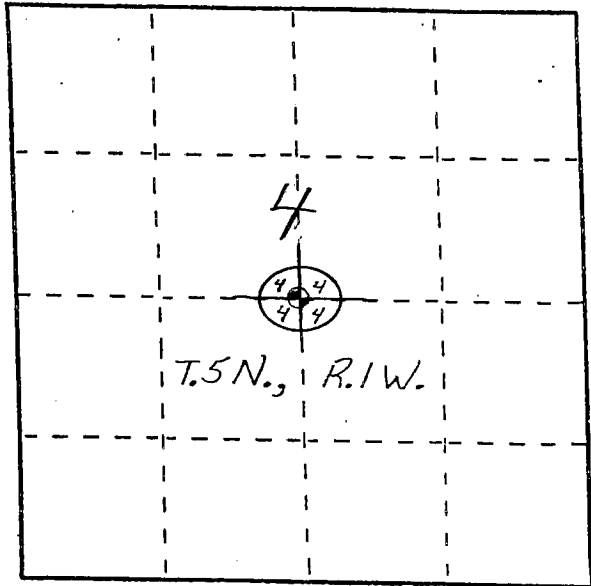
○ = Corner monument restored.

The Center of Section 4,
Town 5 North, Range 1 West,
Clifton Township, Grant
County, Wisconsin.

NORTH 556,155.35'

EAST 875,961.22'

GRANT COUNTY COORDINATES
WGS 1984 (91)

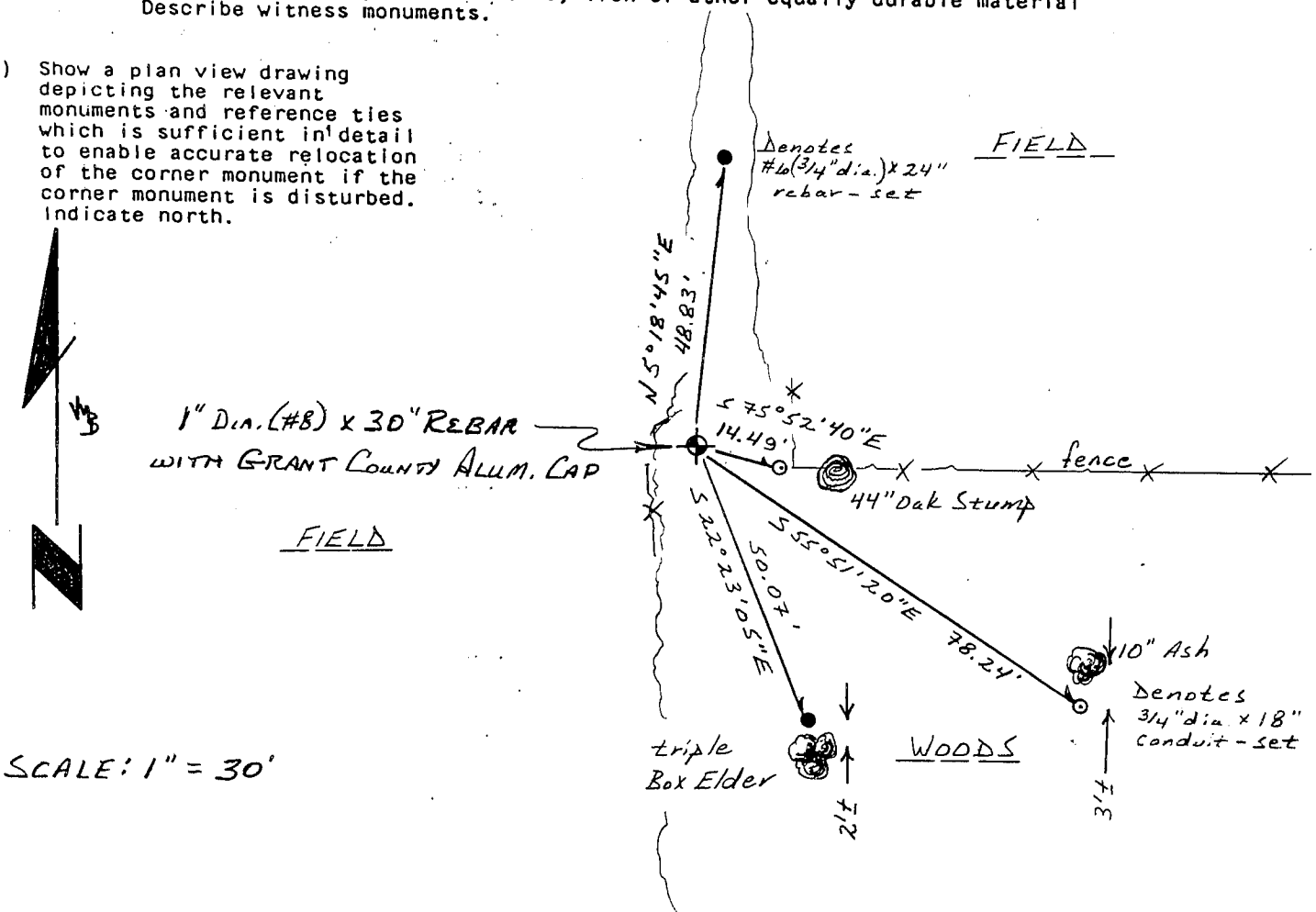


(b) Describe any record evidence, monument evidence, occupational evidence, testimonial evidence or any other material evidence you considered, and whether the monument was found or placed.

CORNER SET FROM STUMP OF WHITE OAK BEARING TREE AS DESCRIBED BY HERBERT J. GOULD IN A SURVEY DATED OCTOBER 27, 1889.

(c) In the plan view drawing below, provide reference ties to at least 4 witness monuments, or, if the location is within a municipality, to at least 2 witness monuments. (Witness monuments shall be made of concrete, natural stone, iron or other equally durable material. Describe witness monuments.)

(d) Show a plan view drawing depicting the relevant monuments and reference ties which is sufficient in detail to enable accurate relocation of the corner monument if the corner monument is disturbed. Indicate north.



SCALE: 1" = 30'

- (e) Describe any material discrepancy between the location of the corner as restored or reestablished and the location of that corner as previously restored or reestablished by distance and direction. Show the discrepancy on the plan view drawing under (d), above. Show the distances between the corner as previously restored or reestablished and (1) the corner as restored or reestablished, and (2) to at least 2 of the witness monuments shown on the drawing in (d), above.

PROTRACTED CENTER BY THOMAS BUCK, 1999, IS S29°04'E, 13.0'.

- (f) Was the corner restored through acceptance of (1) an obliterated evidence location, or, (2) a found perpetuated location?

A found perpetuated location.

- (g&h) Was the corner reestablished through lost corner proportionate methods? If so, show the method, including the directions and distances to other public land survey corners used as evidence or used for proportioning in determining the corner location?

Ns.

- (1) I, Bruce D. Bowden
(type or print name) certify that the corner location shown on this record was determined by me or under my direction and control and that this U.S. Public Land Survey Monument Record is correct and complete to the best of my knowledge and belief.

Bruce D. Bowden
Signature

Oct 7, 2004
Date

