

U.S. PUBLIC LAND SURVEY MONUMENT RECORD - GRANT COUNTY, WI

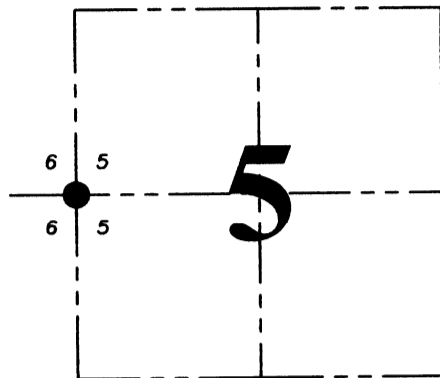
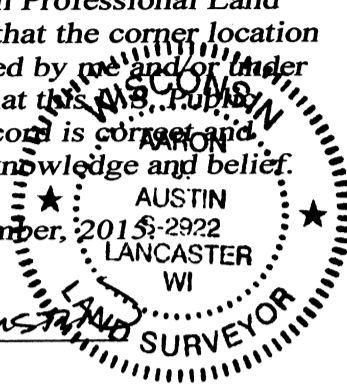
Section 5, Town 5 North Range 1 West, Town of Clifton

CERTIFICATE:

I, Aaron J. Austin, Wisconsin Professional Land Surveyor, do hereby certify that the corner location on this record was determined by me and/or under my direct supervision and that this Wisconsin Public Land Survey Monument Record is correct and complete to the best of my knowledge and belief.

Dated this 2nd day of November, 2015.

Aaron J. Austin
 Aaron J. Austin, S-2922



● = CORNER LOCATION

HISTORY OF CORNER ESTABLISHMENT:

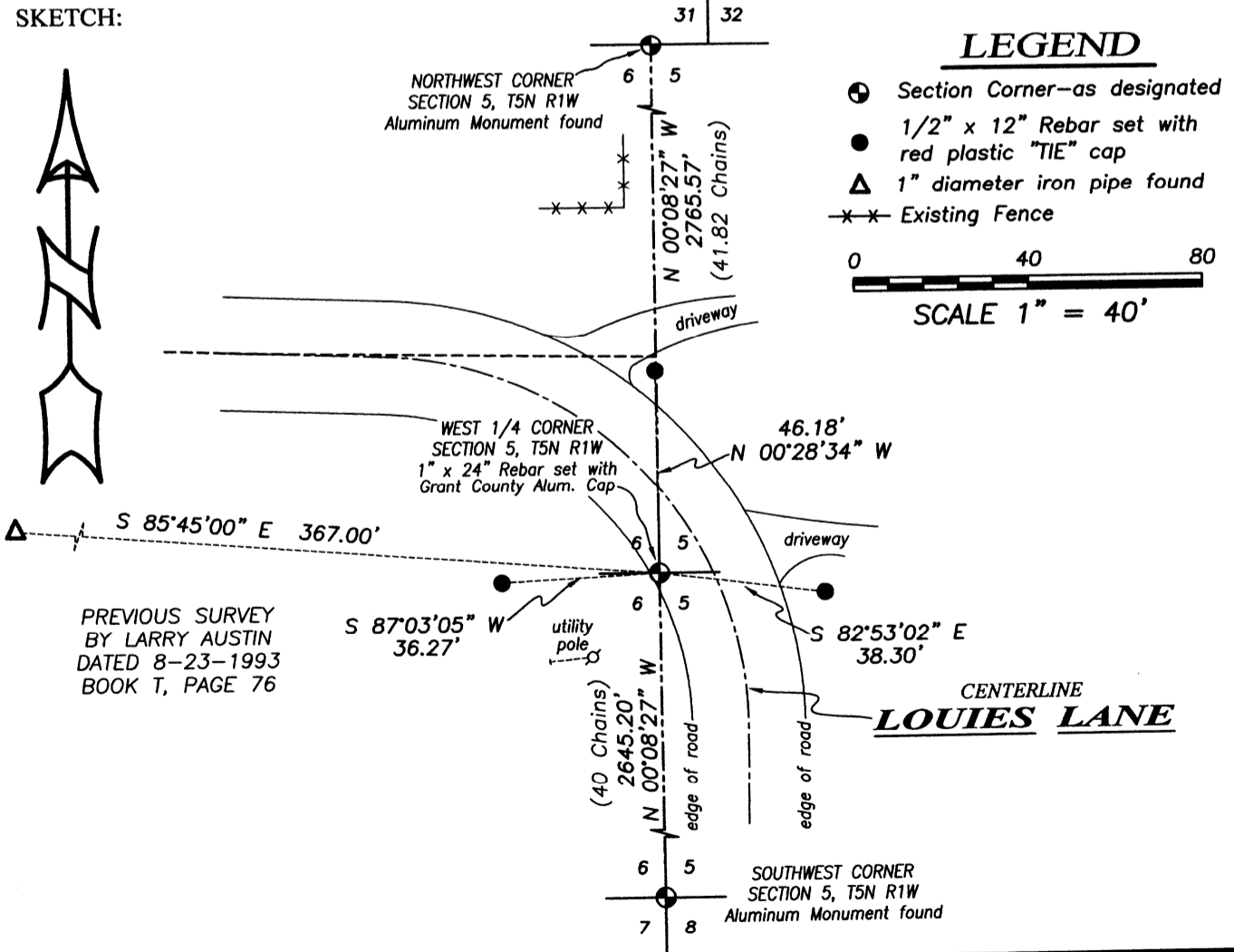
- 1832-Parke set original corner.
- 1846-Stuntz tied to the corner on a Survey filed in Book B, Page 25.
- 1870-Allen tied to the corner on a Survey filed in Book C, Page 229.
- 1889-Goold tied to the corner on a Survey filed in Book D, Page 171.
- 1889-Goold tied to the corner on a Survey filed in Book D, Page 181.
- 1993-L. Austin surveyed along the East line of Section 6, but did not establish the East 1/4 corner on a Survey filed in Book T, Page 76.

DESCRIPTION OF CORNER EVIDENCE FOUND:

No evidence was found of the original corner and no evidence of bearing trees were found. I reset the corner on line between the Northwest corner and the Southwest corner of Section 5 at the prorated distance. I set 3 witness corners and used one corner found from Larry Austin's survey filed in Book T, Page 76. I verified this location with E.D.M. and G.P.S. methods.

DESCRIPTION OF CORNER AND WITNESS MONUMENTS, references and accessories used to perpetuate the original or re-established location of this corner. Witnesses to corner location Shane Austin.

SKETCH:



4211 HWY 81 E, LANCASTER, WI 53813
 PHONE: 608-723-6363 FAX: 608-723-6702

JOB NO: 15s155
 H:\CRD\15s155
 H:\TIE\T5NR1W\15

FIELDBOOK: TDSR
 DRAWN BY: AJ AUSTIN
 CREW: SW AUSTIN

NOV 06 2015