

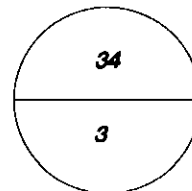
U.S. PUBLIC LAND SURVEY MONUMENT RECORD

Wisconsin Department of Transportation

DT1291 2/2006

County Name Grant		Name of <input checked="" type="checkbox"/> Township, <input type="checkbox"/> City, <input type="checkbox"/> Village Clinton	
Surveyor Name Michael T. Schinke			
Address, City, State, ZIP Code 7501 College Blvd Suite 101 Overland Park, KS 66210			
Y (Northing) 344564.445	X (Easting) 1840568.008	Latitude	Longitude
Project ID 0020543.00		Coordinate ID	

T. 5 N. - R. 1 W
4 th Principal Meridian
Corner 126

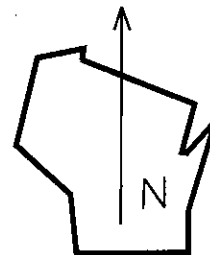


HORIZONTAL DATUM UNITS

- NAD 27
- English
- NAD 83 (1991)
- Metric
- NAD 83 (1997)
- Other - NAD 83 (2011)

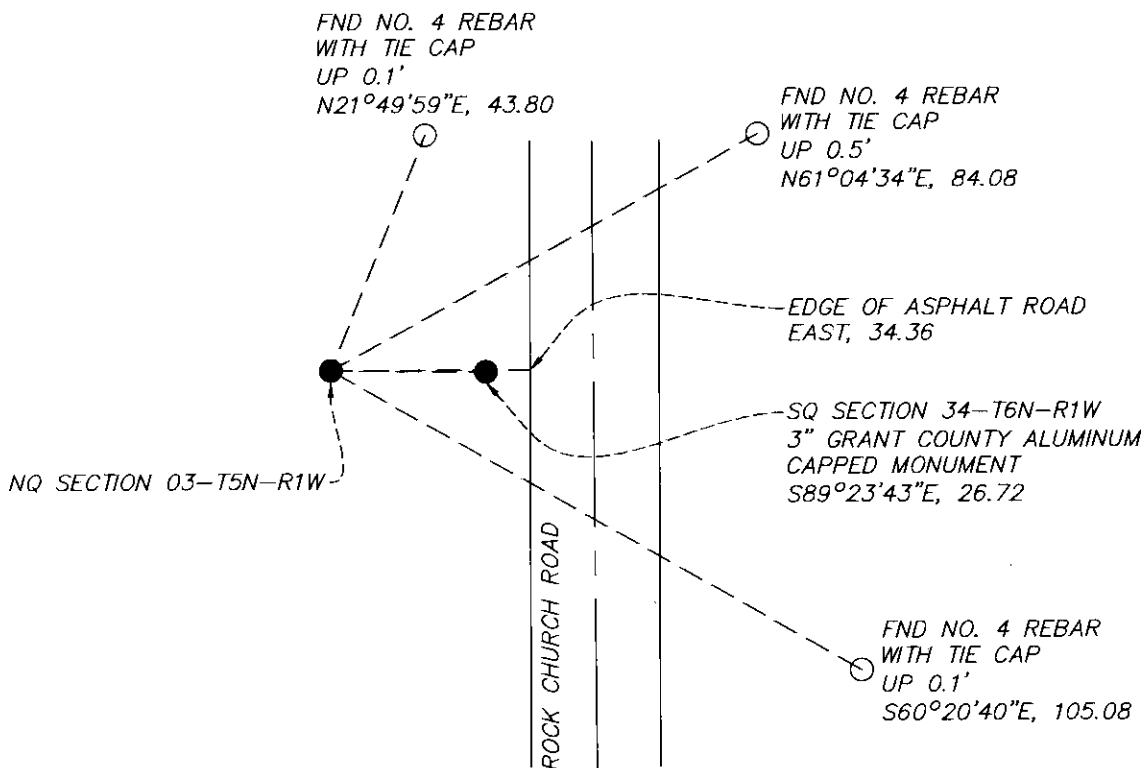
COORDINATE SYSTEM

- Geodetic
- State Plane South Zone
- County



Location Diagram, showing corner identification name, bearing and distance references to at least four witness monuments, fence or occupational lines, centerlines of roads, and other site details for reference. Also, show the bearings and distances between the witness monuments.

North Quarter Section 3, Township 5 North, Range 1 West, Grant County, Wisconsin



Indicate fd. = found or pl. = placed in the diagram below
Bearings used in the location sketch and basis for monument location are assumed, unless as noted.
Monumentation Legend / Description of Corner and Witness Monuments.

- FND NO. 4 REBAR
- FND 3" GRANT COUNTY ALUMINUM CAPPED MONUMENT

If applicable, show any discrepancy between the location of the corner as restored or re-established and the location of that corner as previously restored or re-established by bearing and distance. Also, show the bearings and distances between the previous corner and at least two of the witness monuments.

Basis for Monument Location

1. Describe any record evidence, monument evidence, occupational evidence or any other material evidence including traverse measurements that you considered, and whether the monument was found or placed. Explain below, be specific, and attach a separate sheet if necessary.

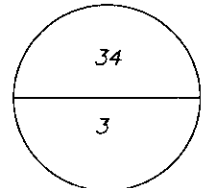
2. Was the corner.
 - a. found perpetuate
 - b. restored through acceptance of obliterated evidence.
 - c. relocated by witness testimony, or
 - d. accepted as a re-monumented corner of record and maintained with additional monumentation?

3. Was the corner re-established through last corner proportionate methods? If so, show the method, including the directions and distances to other public land survey corners used as evidence or used in determining the corner location.
 1. Westwood Professional Services searched the area and found the bar with 3" Aluminum Cap. Found 2 of 4 ties per 2004 cert and measured 26.7' to the SQ34.

2. D

3. NO

T. 5 N. R. 1 W
4 th Principal Meridian
Corner 126



Certification

I, Michael T. Schinke, certify that the corner location shown on the record was determined by me or under my direction and control and that the U.S. Public Land Survey Monument Record is correct and complete to the best of my knowledge and belief, in accordance with Chapter A-E 7.08 of the Wisconsin Administration Code.

Section Control Data Sheets have been filed in the County Surveyor's office, showing final measurements by direction and distance between all re-monumented corners. Section Control information is referenced by the following.

Date	Project ID 0020543.00	Sheet(s) 2 of 2
------	--------------------------	--------------------



x Michael T Schinke

(Registered Land Surveyor Signature and Number)

04/23/2020

Date

