

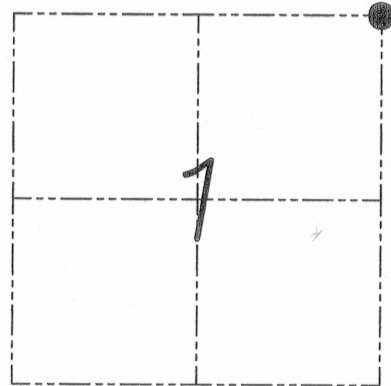
U.S. PUBLIC LAND SURVEY MONUMENT RECORD

Section 1, Town 5 North Range 1 West, Town of Clifton, Grant County, Wisconsin

CERTIFICATE

I, Larry L. Austin, do hereby certify that the corner location on this record was determined by me and/or under my direct supervision and that this U.S. public land survey monument record is correct and complete to the best of my knowledge and belief.

Larry L. Austin
 Larry L. Austin, S-1903



● = CORNER LOCATION

HISTORY OF CORNER

Corner was originally set in 1832 by Lyon. In 1986 Halverson set a railroad spike at this location. No other record of the corner was found.

CORNER EVIDENCE FOUND

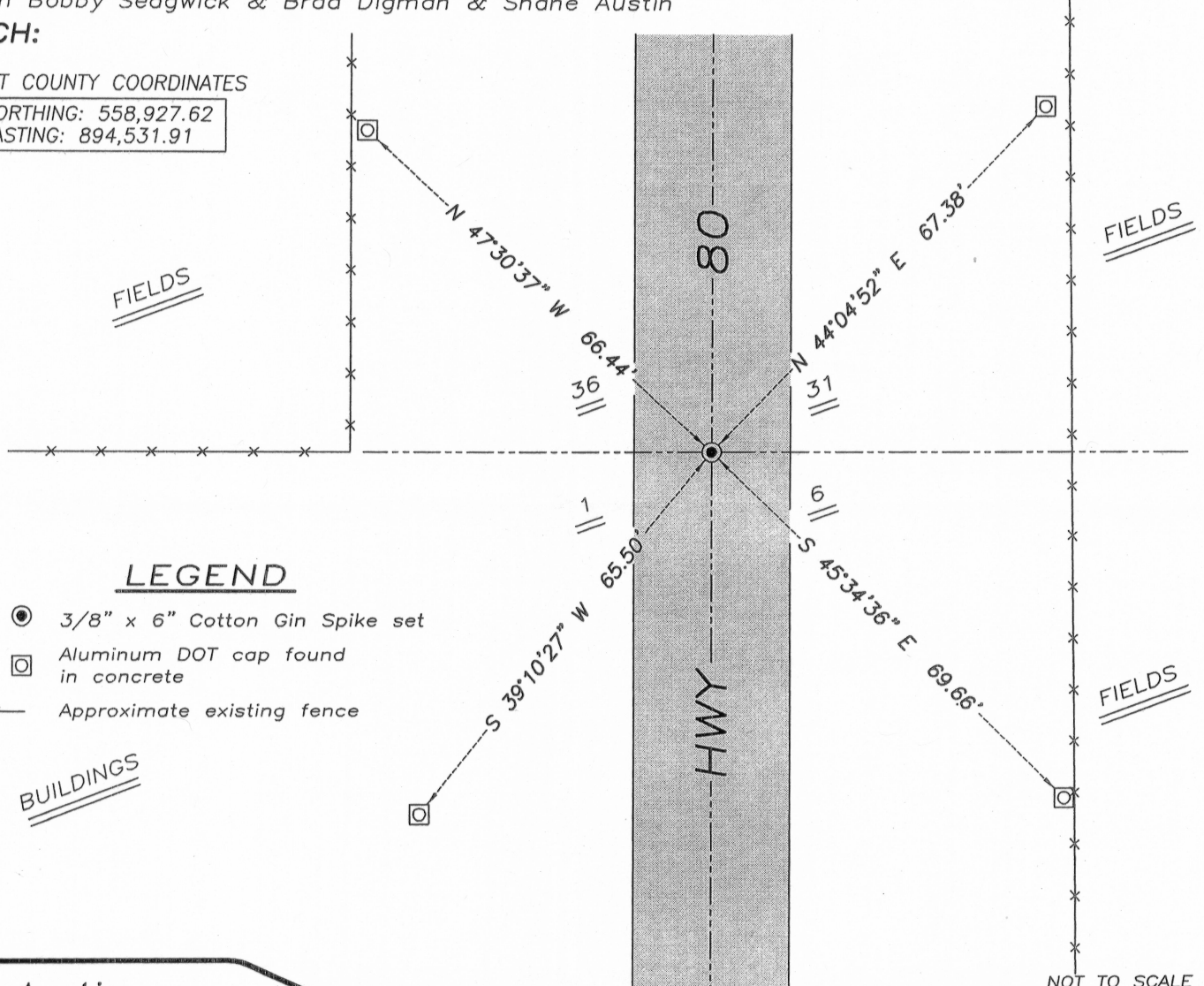
I found the existing railroad spike prior to road construction. I reset the corner and set new ties as shown below. Verified this location using EDM & GPS methods.

DESCRIPTION OF CORNER AND WITNESS MONUMENTS, references and accessories used to perpetuate the original or re-established location of this corner. Witnesses to monument location Bobby Sedgwick & Brad Digman & Shane Austin

SKETCH:

GRANT COUNTY COORDINATES

NORTHING: 558,927.62
 EASTING: 894,531.91



LEGEND

- 3/8" x 6" Cotton Gin Spike set
- ◻ Aluminum DOT cap found in concrete
- x- Approximate existing fence

NOT TO SCALE



Austin Engineering LLC

4211 HWY 81 E, LANCASTER, WI 53813
 PHONE 608-723-6363 FAX 608-723-6702

JOB NUMBER 08S249-WIDOT
 FIELDBOOK: TDSR, 2810-B
 G:\GRANTDOT\T6NR1W
 H:\TIE\T5NR1W\01

DRAWN BY: SW AUSTIN
 APPROVED: LL AUSTIN

01

JUN 28 2010