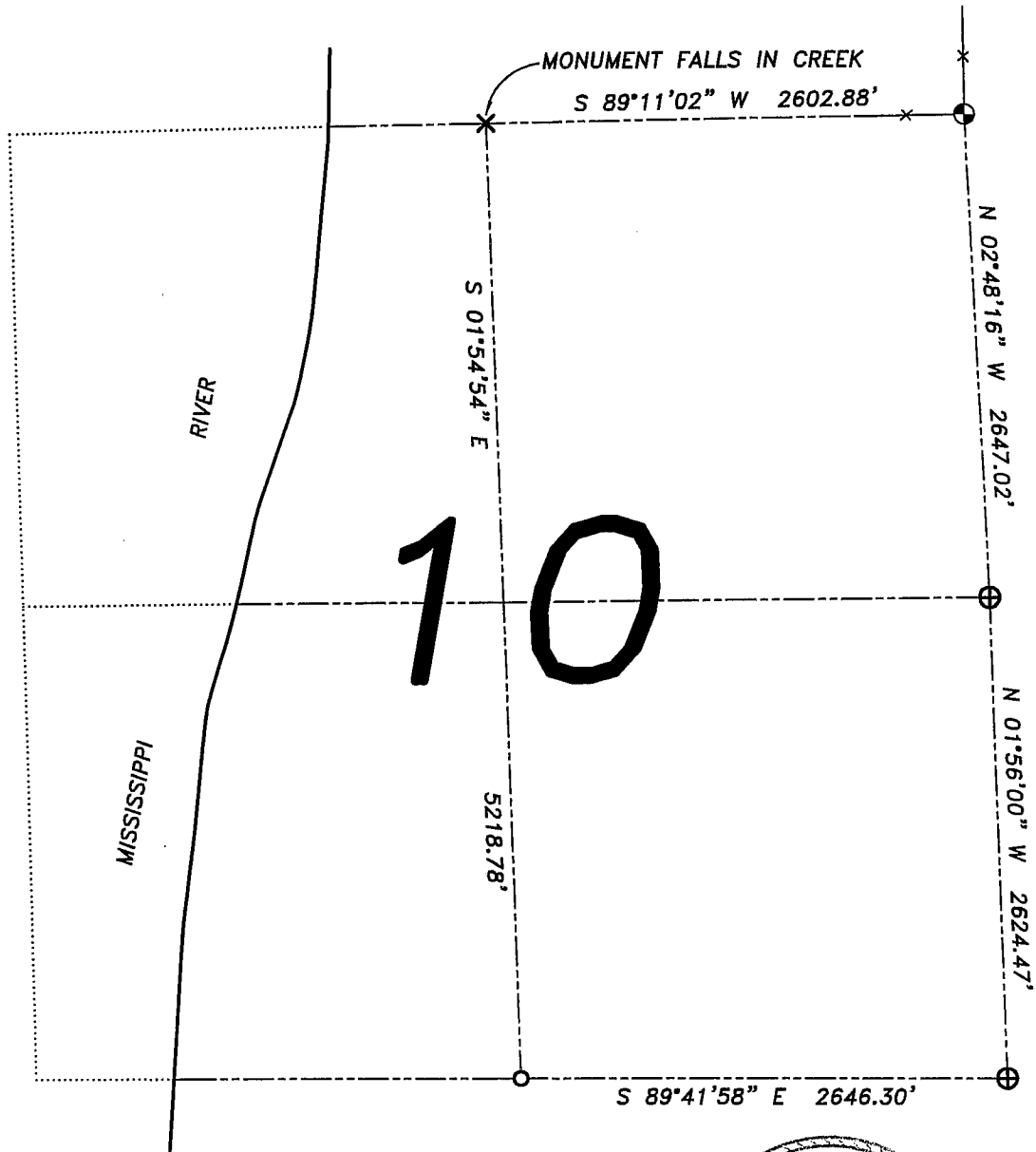


U.S. PUBLIC LAND SURVEY MONUMENT RECORD – GRANT COUNTY, WI

Summary of Section 10, Town 4 North, Range 6 West, Town of Glen Haven



LEGEND

- ⊕ No. 8 rebar found with Grant County Aluminum Cap
- ⊙ No. 8 x 30" rebar set with Grant County Aluminum Cap – wt=2.67#/l.f.
- No. 6 rebar found
- × No monument set
- x— Approximate location of existing fence

Relationship of all section corners to other section corners shall be shown hereon by bearing and distance or grid coordinates. Bearing reference shown below.

Larry L. Austin 2/25/07
 Larry L. Austin S-1903 date

Bearings referenced to the South line of the Southeast 1/4 of this Section, which is assumed to bear S 89°41'58" W.

SKETCH NOT TO SCALE



Austin Engineering LLC

4211 HWY 81 E, LANCASTER, WI 53813
 PHONE 608-723-6363 FAX 608-723-6702

JOB NUMBER: 05s340
 FIELDBOOK: TDSR, 2601
 G:\T4NR6W\10
 H:\TIE\T4NR6W\10SUM

DRAWN BY: SW AUSTIN
 APPROVED: LL AUSTIN