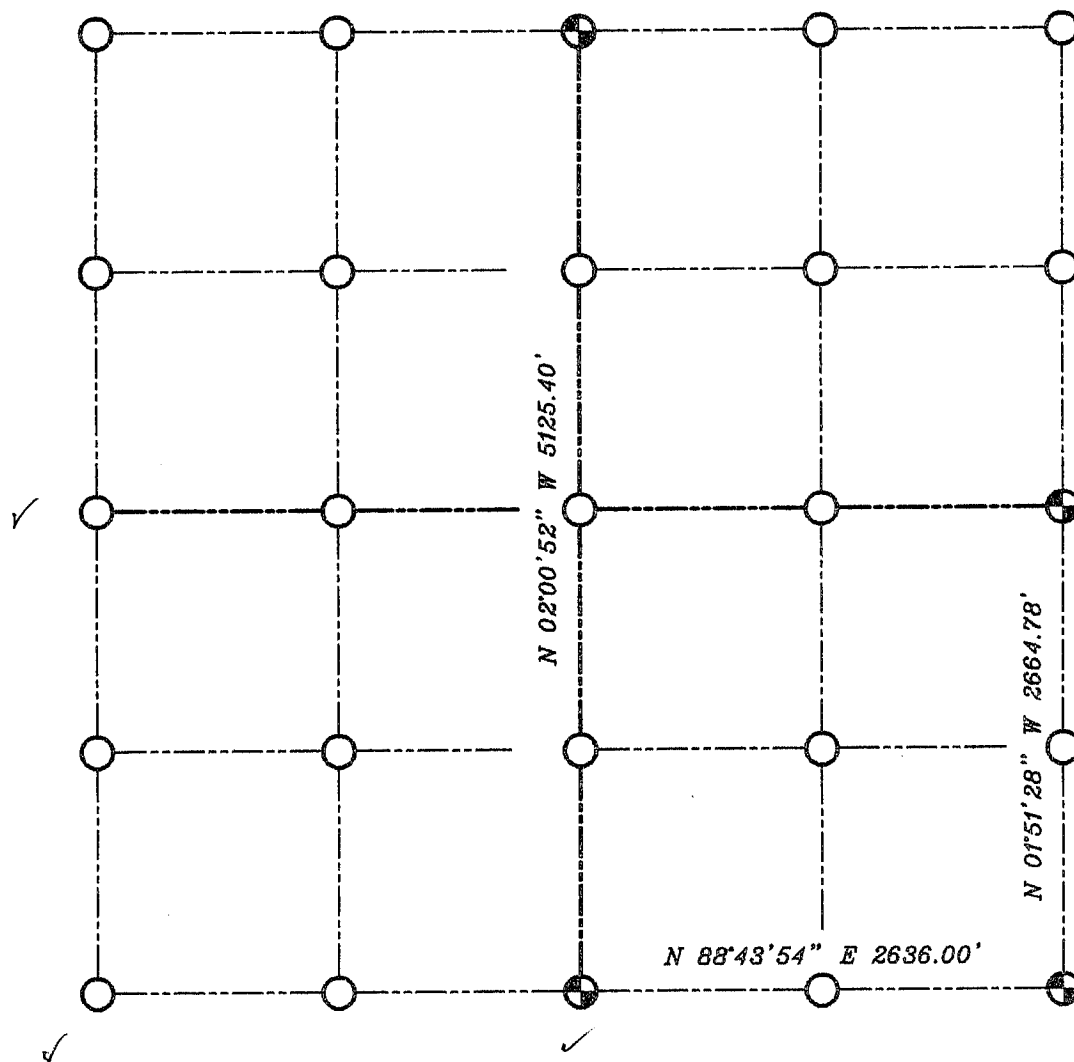



# GRANT COUNTY SECTION SUMMARY

$\frac{1}{\text{SECTION}} - \frac{4N}{\text{TOWN}} - \frac{6W}{\text{RANGE}}$



### LEGEND

 NO. 8 X 30" REBAR SET WITH GRANT COUNTY ALUMINUM CAP

Relationships of all section corners to other section corners shall be shown hereon by bearing and distance or grid coordinates  
 Show or describe bearing reference



BEARINGS REFERENCED TO THE NORTH-SOUTH 1/4 LINE OF SECTION 1, WHICH IS ASSUMED TO BEAR N 02°00'52" W.