

Survey Monument Record

CORNER NO. MAY 16 1995

SECTION 26

TOWN 4N

RANGE 6W

TOWN OF GLEN HAVEN

TYPE OF MONUMENT 10" x 10" Stone Monument

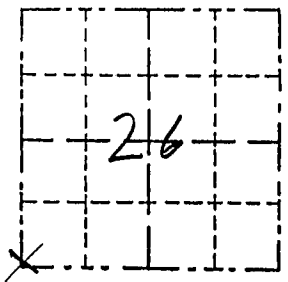
STATE PLANE COORDINATES: N _____
E _____

ELEVATION — M.S.L. DATUM: _____

THETA ANGLE: _____

FIELD BOOK: 94-9

PAGE 65



LOCATION
(Indicated by "X")

A FOUND PERPETUATED LOCATION

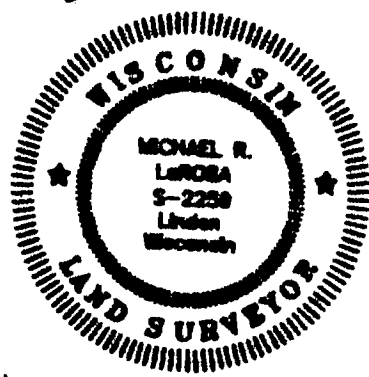
SEAL:

BASIS FOR MONUMENT LOCATION

(Use reverse side if necessary)

Show info such as: History of corner, with reference to Vol. and pg., dates, surveyor; exact description of monument replaced; if location computed, by taped or EDM traverse; landowner, remarks, etc.

The most recent survey records of this corner are surveys by Homer Ralph (Vol. E pg. 265 & Vol. F R. 285) and Steven Boll (Vol. Q pg. 122 & Vol. T pg. 109) calling for a stone at this corner. A 10" x 10" stone found on an East-West fence at fence remnants to the north was accepted and ties were set after it fit perfectly with corners to the north after an EDM traverse of sections 26, 27, 22 and 23 of 4-6.



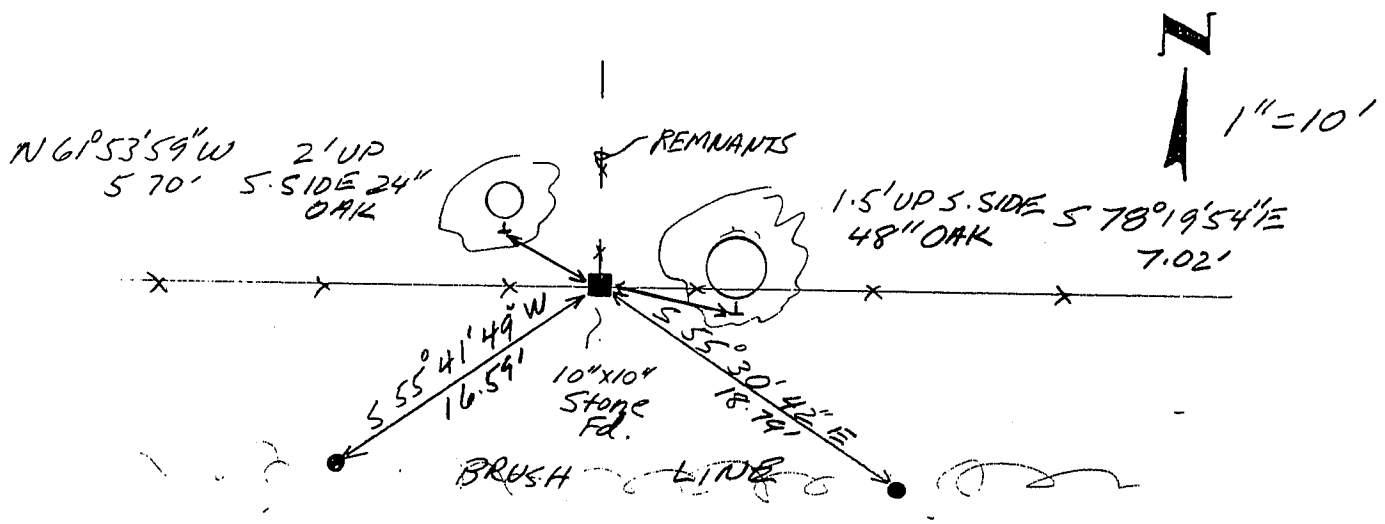
CERTIFIED CORRECT TO THE BEST OF MY KNOWLEDGE AND BELIEF

Michael R. Larson
Registered Land Surveyor

DATE: 4/26/1995

TIE SKETCH

Show at least three (4) ties and monument



- Legend
- x — x — Fence
 - 1/2" Iron Rod Set
 - ⊗ Nail in tree

NOTE: measurements are to carved depression in top of stone.