

U.S. PUBLIC LAND SURVEY MONUMENT RECORD - GRANT COUNTY, WI

Section 23, Town 4 North Range 6 West, Town of Glen Haven (a)

NOTE: This form is intended and designed to fulfill all requirements of the Wisconsin Administrative Code Chapter A-E 7.08, U.S. Public Land Survey Monument Record (3) (a) (b) (c) (d) (e) (f) (g) (h) (i).

CERTIFICATE: (i)

I, Aaron J. Austin, Wisconsin Professional Land Surveyor, do hereby certify that the corner location on this record was determined by me and/or under my direct supervision and that this U.S. Public Land Survey Monument Record is correct and complete to the best of my knowledge and belief.

Dated this 14th day of April, 2020.

Aaron J. Austin
Aaron J. Austin, S-2922



⊙ = CORNER LOCATION

HISTORY OF CORNER ESTABLISHMENT:

Original corner was set in 1832 by Robert Clark.
Bruce Bowden established a 7" x 9" set post as the corner and prepared a Survey Monument Record dated 3/25/1983.

DESCRIPTION OF CORNER EVIDENCE FOUND: (b) (f) (g) (h)

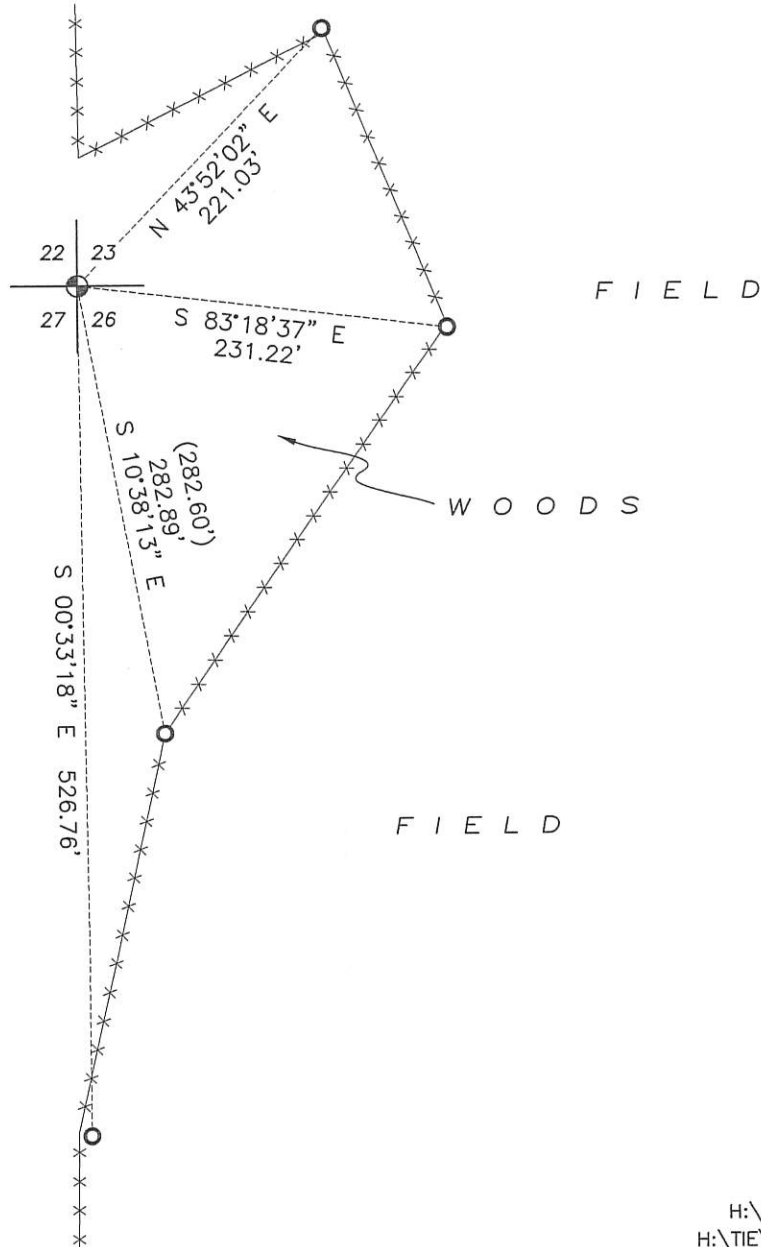
I found four witness corners Bowden set. I set a 7/8" x 24" rebar at Bowden's location utilizing his existing witness corners. I verified the Monument's location with G.P.S. and E.D.M. methods.

DESCRIPTION OF CORNER AND WITNESS MONUMENTS, references and accessories used to perpetuate the original or re-established location of this corner. (c) (d) (e)

Witnesses to corner location Shane Austin, Owen Austin.
Drawn by Owen Austin

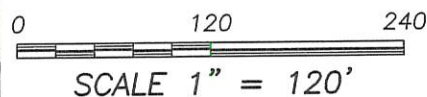
SKETCH:

SOUTHWEST CORNER
SECTION 23, T4N R6W
7/8" x 24" Rebar set



LEGEND

- ⊙ Section Corner—as designated
- 3/4" rebar found
- 3/4" x 18" rebar set
- x-x-x- Existing fence
- () Recorded as

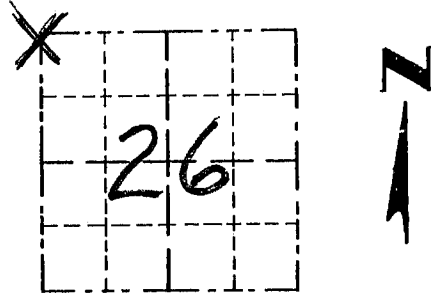


GRANT COUNTY

Survey Monument Record

TYPE OF MONUMENT 3/4" x 24 RD. IRON BAR
 STATE PLANE COORDINATES: N -
 E -
 ELEVATION — M.S.L. DATUM: -
 THETA ANGLE: -
 FIELD BOOK: 95-14
 PAGE 13

CORNER NO. 85
 SECTION 26
 TOWN 4 N
 RANGE 1 W
NW COR.



LOCATION
(Indicated by "X")

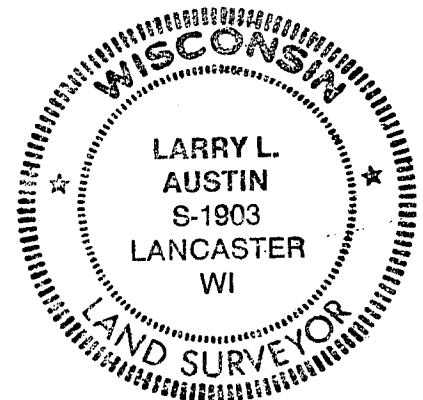
BASIS FOR MONUMENT LOCATION

(Use reverse side if necessary)

Show info such as: History of corner, with reference to Vol. and pg., dates, surveyor; exact description of monument replaced; if location computed, by taped or EDM traverse; landowner, remarks, etc.

SEAL:

ORIGINAL CORNER SET IN 1833
 BY CLARK. NO RECORD FOUND
 SINCE ORIGINAL SURVEY, CORNER
 WAS RESET ON-LINE AND
 MIDWAY BETWEEN THE WEST 1/4 COR.
 OF SECTION 26 AND THE WEST 1/4 COR.
 OF SECTION 23 AND VERIFIED
 BY EDM TRAVERSE OF THE AREA.



CERTIFIED CORRECT

Larry L. Austin
 Registered Land Surveyor

DATE: 10/20/95

TIE SKETCH

Show at least three (3) ties and monument

