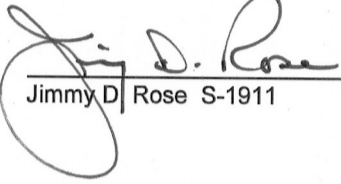


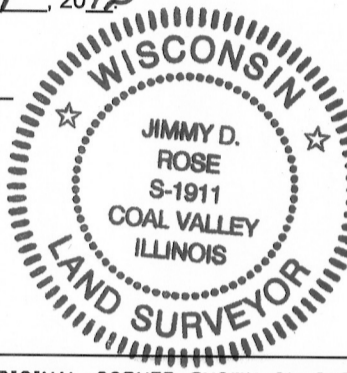
U.S. PUBLIC LAND SURVEY MONUMENT RECORD - GRANT COUNTY, WI
 Section 25, Town 4 North Range 6 West, Town of Glen Haven West

CERTIFICATE:

I, Jimmy D. Rose, do hereby certify that the corner location on this record was determined by me and/or under my direct supervision and that this U.S. Public Land Survey Monument Record is correct and complete to the best of my knowledge and belief.

Dated this 12th day of November, 2012


 Jimmy D. Rose S-1911



● = CORNER LOCATION

HISTORY OF CORNER ESTABLISHMENT: ORIGINAL CORNER SHOWN ON SURVEY BY OVERTON IN 1855, NO RECORD OF RECOVERY SINCE THEN WAS UNCOVERED.

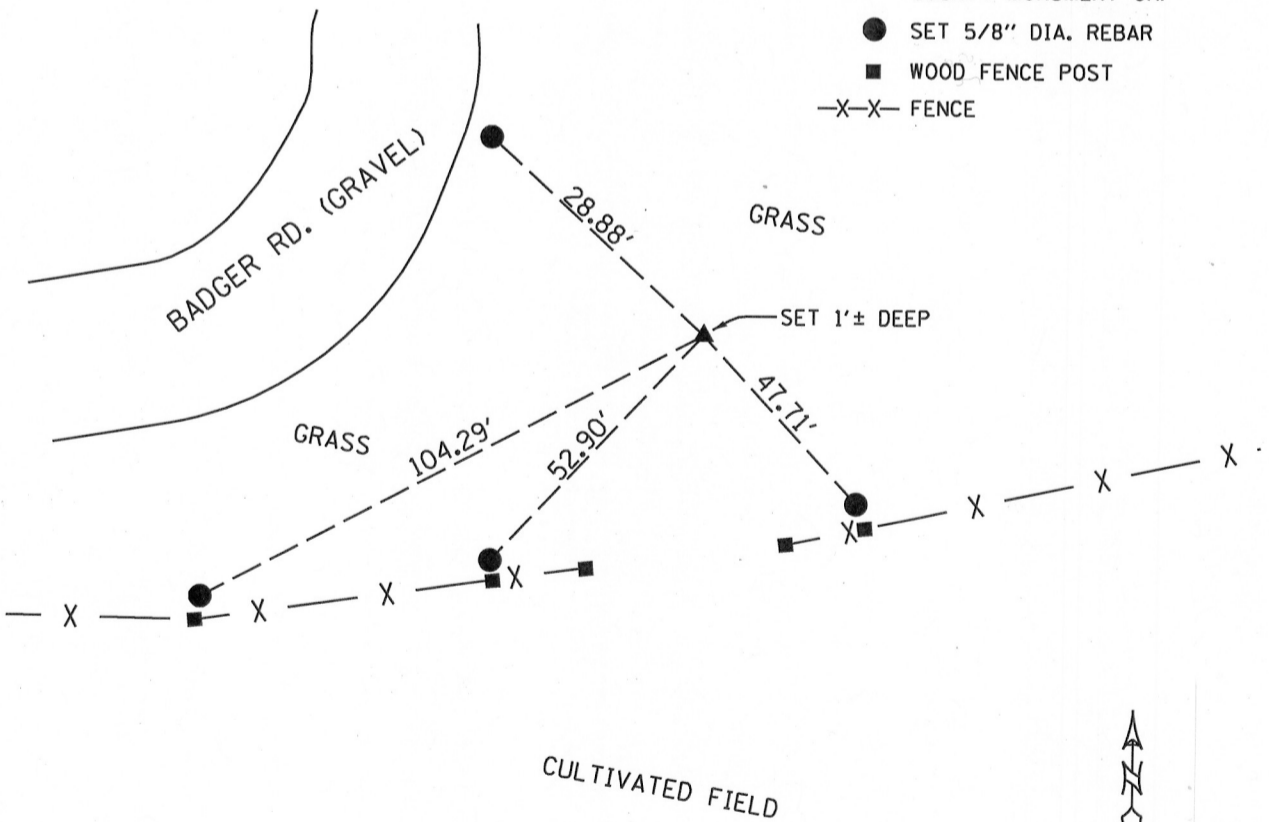
DESCRIPTION OF CORNER EVIDENCE FOUND: TRAVERSE OF EXISTING CORNERS AND OCCUPATIONAL EVIDENCE IN SECTIONS 25, 24 AND 26 WERE USED TO CALCULATE THE CORNER LOCATION AS ESTABLISHED.

DESCRIPTION OF CORNER AND WITNESS MONUMENTS, references and accessories used to perpetuate the original or re-established location of this corner.

SKETCH:

LEGEND

- ▲ SET 1" DIA. REBAR W/ GRANT COUNTY MONUMENT CAP
- SET 5/8" DIA. REBAR
- WOOD FENCE POST
- X-X- FENCE



NOT TO SCALE

NOV 27 2012