

46078

U.S. PUBLIC LAND SURVEY MONUMENT RECORD - GRANT COUNTY, WI

Section 23, Town 4 North Range 6 West, Town of Glen Haven (a)

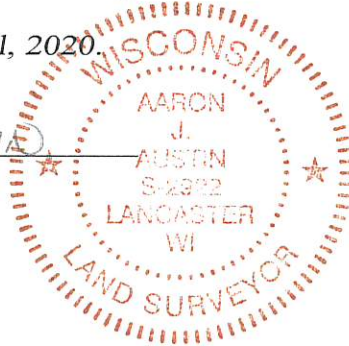
NOTE: This form is intended and designed to fulfill all requirements of the Wisconsin Administrative Code Chapter A-E 7.08, U.S. Public Land Survey Monument Record (3) (a) (b) (c) (d) (e) (f) (g) (h) (i).

CERTIFICATE: (i)

I, Aaron J. Austin, Wisconsin Professional Land Surveyor, do hereby certify that the corner location on this record was determined by me and/or under my direct supervision and that this U.S. Public Land Survey Monument Record is correct and complete to the best of my knowledge and belief.

Dated this 14th day of April, 2020.

Aaron J. Austin
Aaron J. Austin, S-2922



⊕ = CORNER LOCATION

HISTORY OF CORNER ESTABLISHMENT:

Original corner was set in 1832 by Robert Clark.
Bruce Bowden set a 1" smooth rod and prepared a Survey Monument Record dated 3/25/1983.

DESCRIPTION OF CORNER EVIDENCE FOUND: (b) (f) (g) (h)

I found the monument set by Bowden and three witness corners. I set one additional witness corner after I verified the Monument's location with G.P.S. and E.D.M. methods.

DESCRIPTION OF CORNER AND WITNESS MONUMENTS: references and accessories used to perpetuate the original or re-established location of this corner. (c) (d) (e)

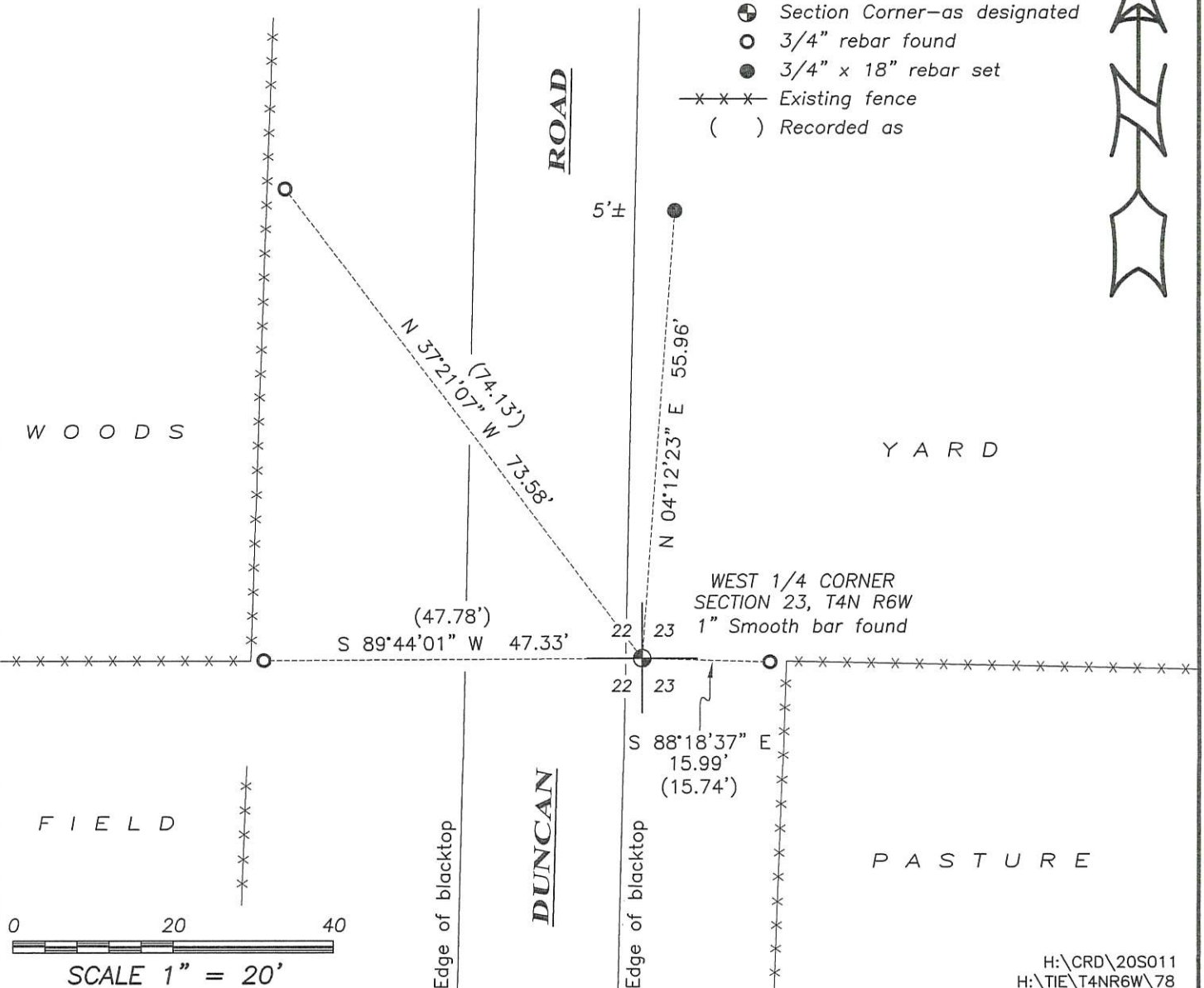
Witnesses to corner location Shane Austin, Owen Austin.
Drawn by Owen Austin

LEGEND

- ⊕ Section Corner—as designated
- 3/4" rebar found
- 3/4" x 18" rebar set
- x—x— Existing fence
- () Recorded as



SKETCH:



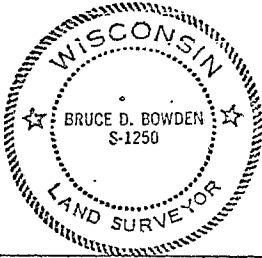
CERTIFIED LAND CORNER

STATE OF WISCONSIN)
 COUNTY OF GRANT) S.S.

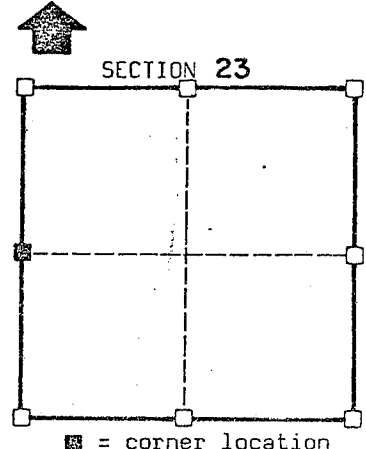
CERTIFICATE

I, BRUCE D. BOWDEN certify that the corner location shown on this record was determined by me or under my direction and control and that this U.S. Public Land Survey Monument Record is correct to the best of my knowledge and belief.

Bruce D. Bowden date 3-25-83



Seal



T 4 N R 6 W
 Town of: GLEN HAVEN

History of original corner establishment:

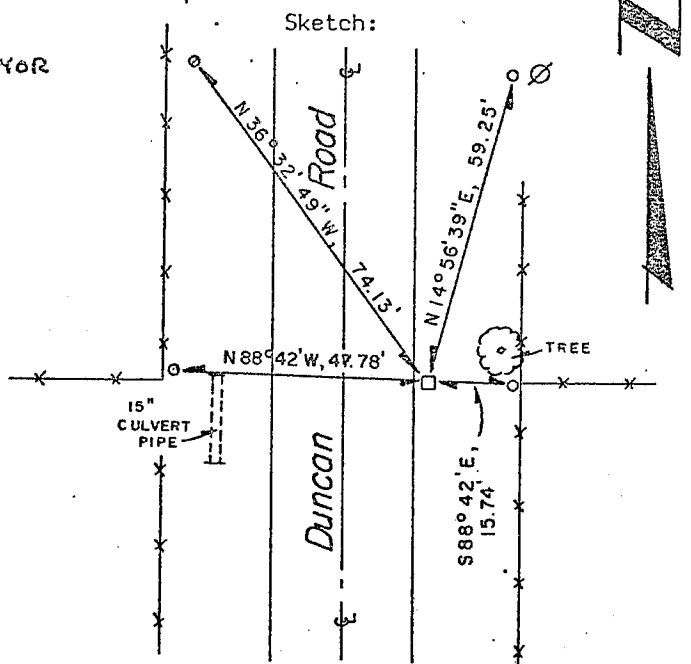
Description of corner evidence found:

E-W FENCE LINE & PROJECTION OF FENCE FROM SOUTH

Description of corner and witness monuments, references and accessories used to perpetuate the original or re-established location of this corner:

Witnesses to corner location:

BRUCE BOWDEN - REGISTERED LAND SURVEYOR
KEYVIN RÖDER



- Legend**
- ⊙ POWER POLE
 - *-*- FENCELINE
 - 1" Ø X 24" LONG SMOOTH ROD
 - No. 6 X 24" LONG REBAR

SURVEY CONTROL ORDER

Horizontal

Vertical

WISCONSIN COORDINATE SYSTEM

Corner	East(X)	North(Y)	Elevation(Z)	Zone
Control Sta. Name				