

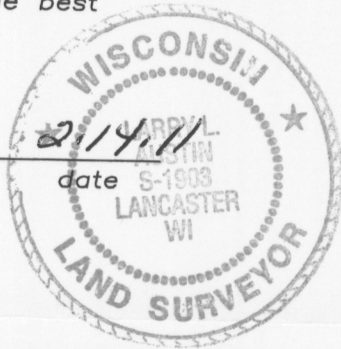
U.S. PUBLIC LAND SURVEY MONUMENT RECORD

Section 13, Town 4 North Range 6 West, Town of Glen Haven, Grant County, Wisconsin

CERTIFICATE

I, Larry L. Austin, do hereby certify that the corner location on this record was determined by me and/or under my direct supervision and that this U.S. public land survey monument record is correct and complete to the best of my knowledge and belief.

Larry L. Austin
Larry L. Austin, S-1903



● = CORNER LOCATION

HISTORY OF CORNER

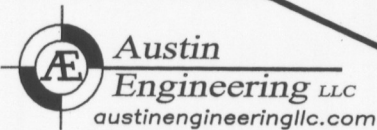
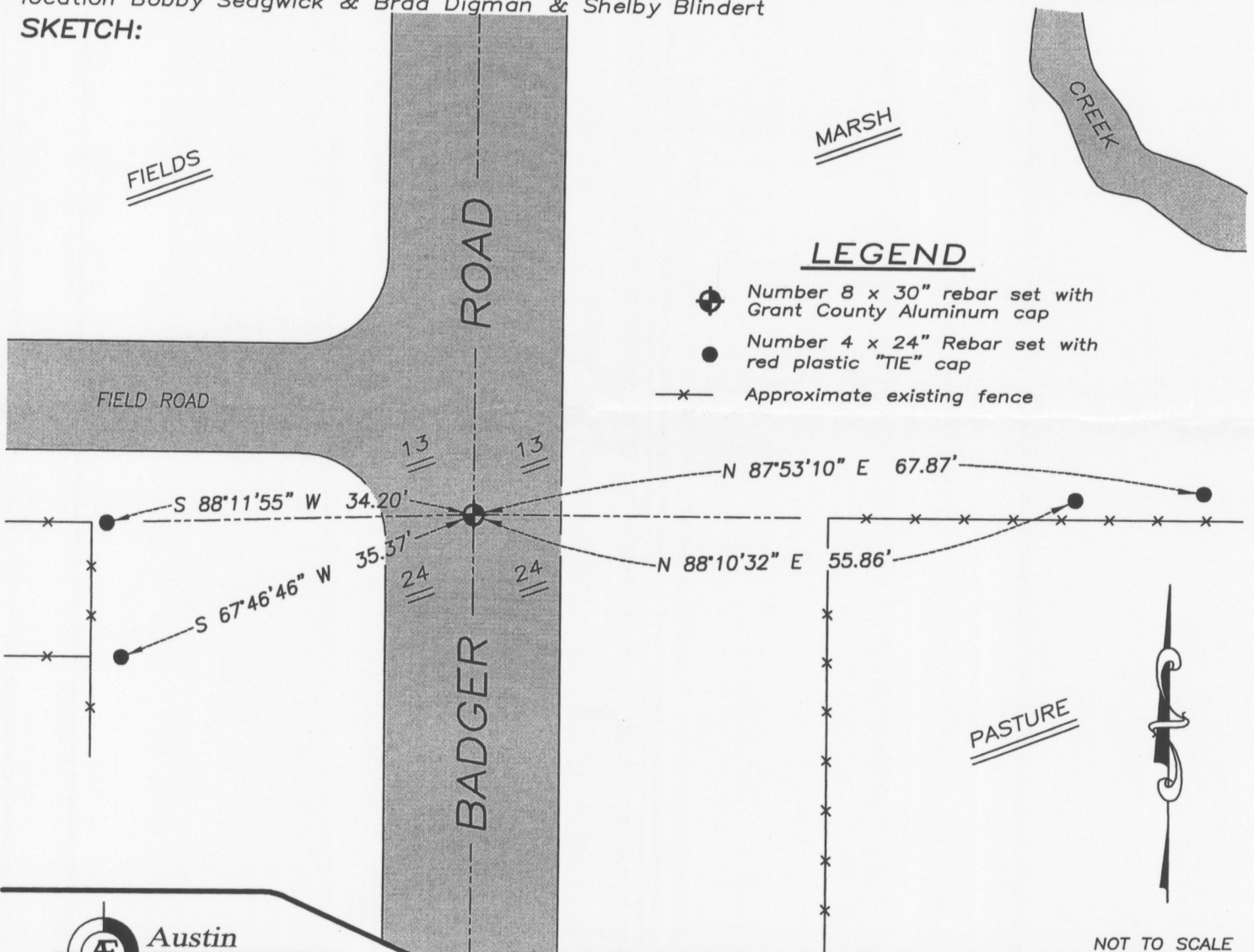
Corner was originally set in 1832 by Clark. In 1848 Stuntz tied to the original corner. No other record of the corner was found.

CORNER EVIDENCE FOUND

I set the corner at an occupied location. Verified this location using EDM & GPS methods.

DESCRIPTION OF CORNER AND WITNESS MONUMENTS, references and accessories used to perpetuate the original or re-established location of this corner. Witnesses to monument location Bobby Sedgwick & Brad Digman & Shelby Blindert

SKETCH:



4211 HWY 81 E, LANCASTER, WI 53813
PHONE: 608-723-6363 FAX: 608-723-6702

JOB NUMBER 09S198-HAMPTON
FIELDBOOK: TDSR, 2904
G:\T4NR6W\01
H:\TIE\T4NR6W\62

DRAWN BY: SW AUSTIN
APPROVED: LL AUSTIN