

46060

# U.S. PUBLIC LAND SURVEY MONUMENT RECORD - GRANT COUNTY, WI

Section 18, Town 4 North Range 6 West, Town of Glen Haven (a)

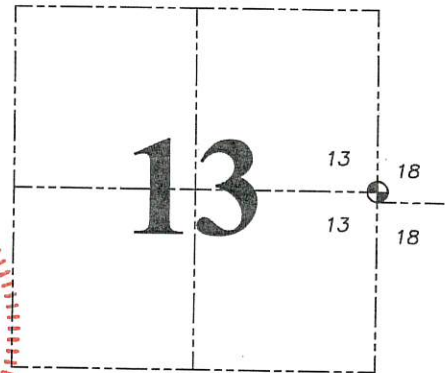
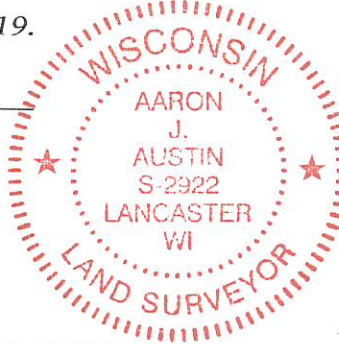
NOTE: This form is intended and designed to fulfill all requirements of the Wisconsin Administrative Code Chapter A-E 7.08, U.S. Public Land Survey Monument Record (3) (a) (b) (c) (d) (e) (f) (g) (h) (i).

### CERTIFICATE: (i)

I, Aaron J. Austin, Wisconsin Professional Land Surveyor, do hereby certify that the corner location on this record was determined by me and/or under my direct supervision and that this U.S. Public Land Survey Monument Record is correct and complete to the best of my knowledge and belief.

Dated this 15th day of January, 2019.

*Aaron J. Austin*  
Aaron J. Austin, S-2922



⊕ = CORNER LOCATION

### Grant County Coordinates:

NAD 83 (2011)  
Northing: 514,377.20  
Easting: 736,158.36

### HISTORY OF CORNER ESTABLISHMENT:

Lucius Lyon set the original corner in 1832. Larry Austin set 1" rebar with Grant County Aluminum Cap and prepared a Survey Monument Record dated 2-14-2011.

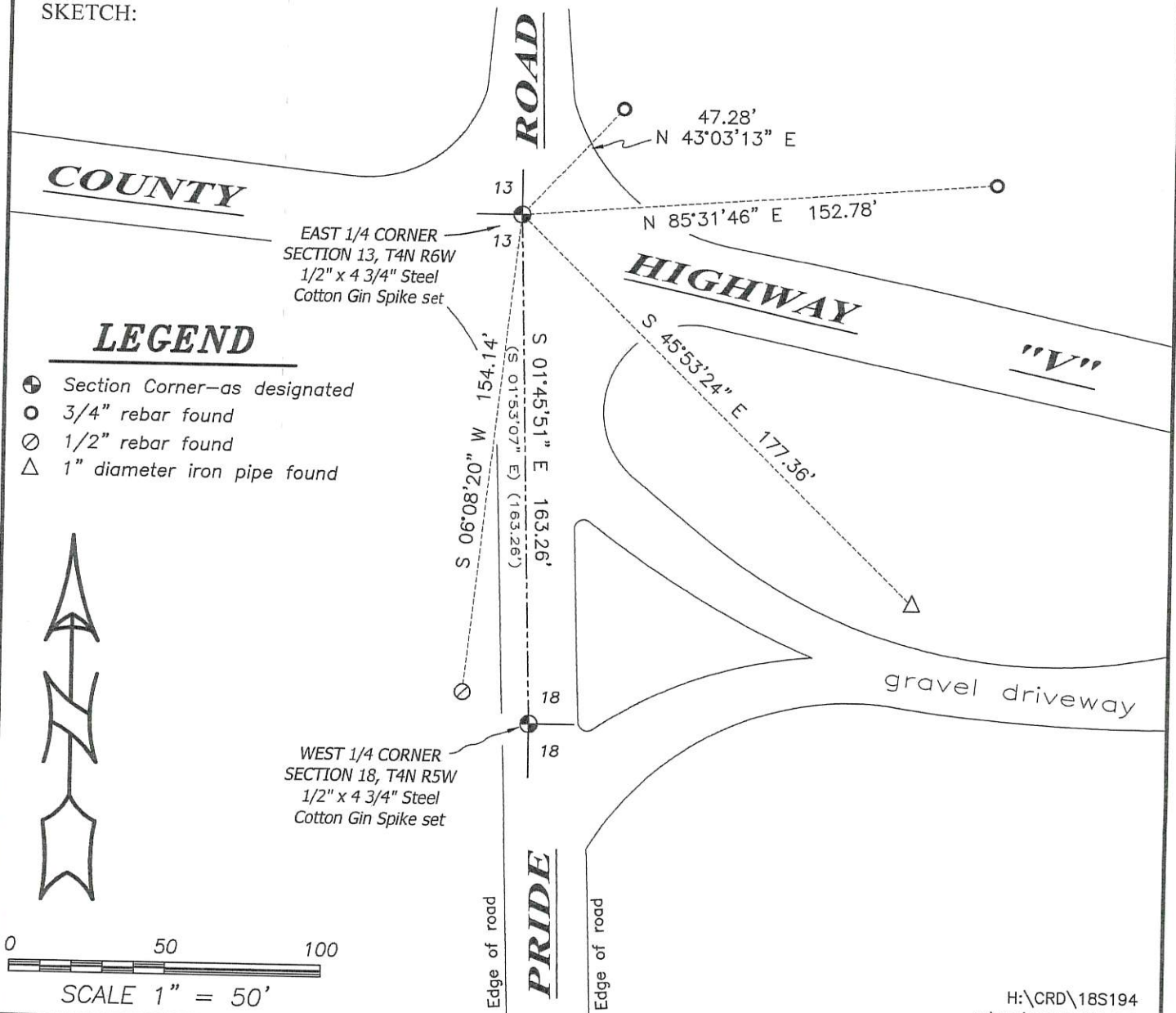
### DESCRIPTION OF CORNER EVIDENCE FOUND: (b) (f) (g) (h)

I reset the monument between the North West corner and the West 1/4 corner of section 18, T4N, R5W according to a survey by myself dated 11-12-2012 and filed in book 32, page 36. I established four witness corners after I verified the monument's location with G.P.S. and E.D.M. methods.

### DESCRIPTION OF CORNER AND WITNESS MONUMENTS, references and accessories used to perpetuate the original or re-established location of this corner. (c) (d) (e)

Witnesses to corner location Shane Austin. Drawn by Owen Austin.

SKETCH:

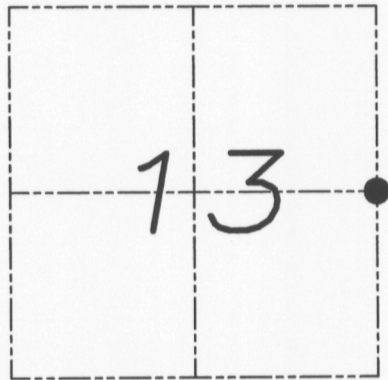


# U.S. PUBLIC LAND SURVEY MONUMENT RECORD

Section 13, Town 4 North Range 6 West, Town of Glen Haven, Grant County, Wisconsin

## CERTIFICATE

I, Larry L. Austin, do hereby certify that the corner location on this record was determined by me and/or under my direct supervision and that this U.S. public land survey monument record is correct and complete to the best of my knowledge and belief.



● = CORNER LOCATION

*Larry L. Austin*  
Larry L. Austin, S-1903



## HISTORY OF CORNER

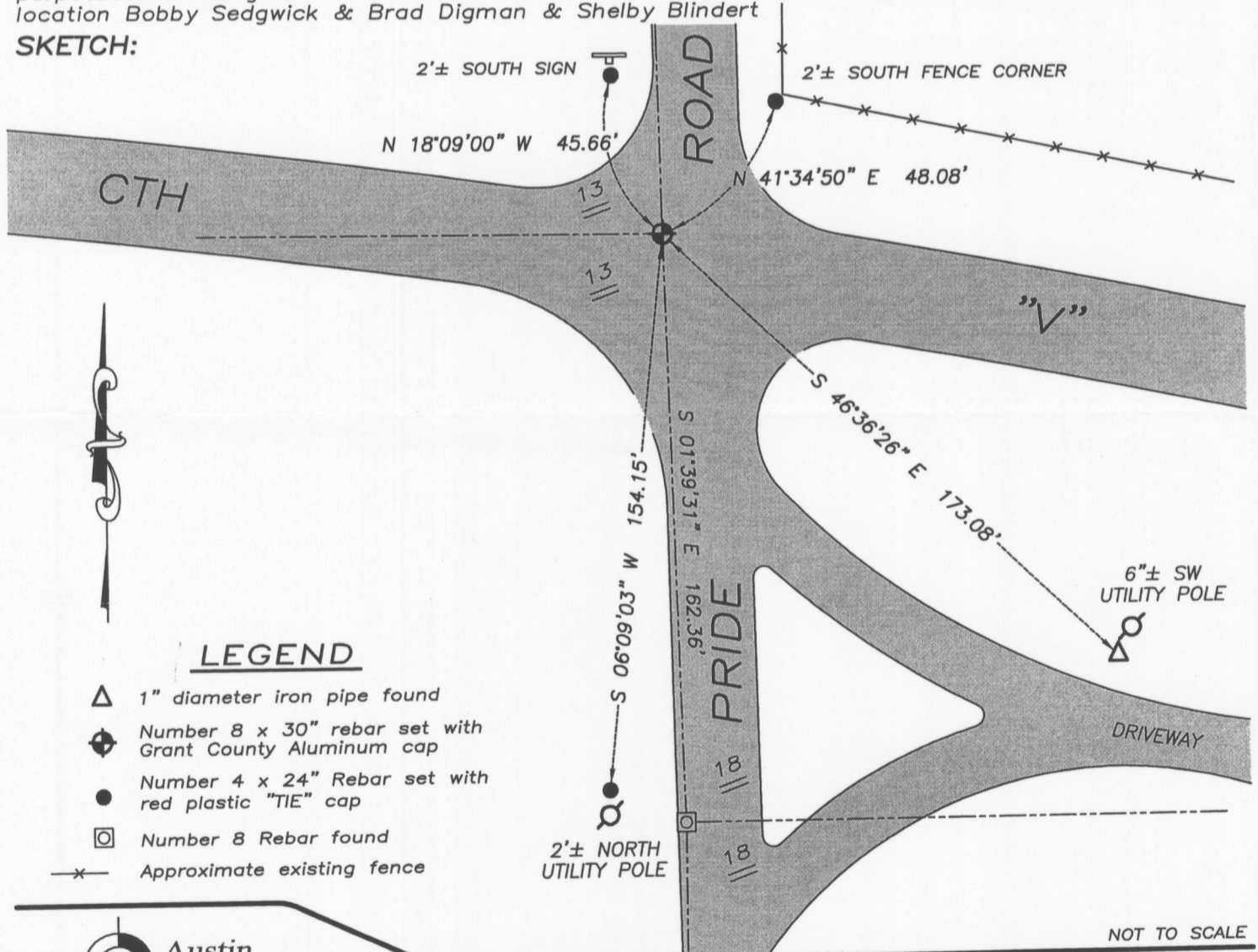
Corner was originally set in 1832 by Lyon. No other record of the corner was found.

## CORNER EVIDENCE FOUND

I set the corner at the recorded offset from the West 1/4 of Section 18, T4N R5W. Verified this location using EDM & GPS methods.

**DESCRIPTION OF CORNER AND WITNESS MONUMENTS**, references and accessories used to perpetuate the original or re-established location of this corner. Witnesses to monument location Bobby Sedgwick & Brad Digman & Shelby Blindert

## SKETCH:



## LEGEND

- △ 1" diameter iron pipe found
- ⊕ Number 8 x 30" rebar set with Grant County Aluminum cap
- Number 4 x 24" Rebar set with red plastic "TIE" cap
- ⊠ Number 8 Rebar found
- x- Approximate existing fence

NOT TO SCALE



Austin Engineering LLC  
austinengineeringllc.com

4211 HWY 81 E, LANCASTER, WI 53813  
PHONE: 608-723-6363 FAX: 608-723-6702

JOB NUMBER 09S198-HAMPTON  
FIELDBOOK: TDSR, 2904  
G:\T4NR6W\01  
H:\TIE\T4NR6W\60

DRAWN BY: SW AUSTIN  
APPROVED: LL AUSTIN

60

FEB 18 2011